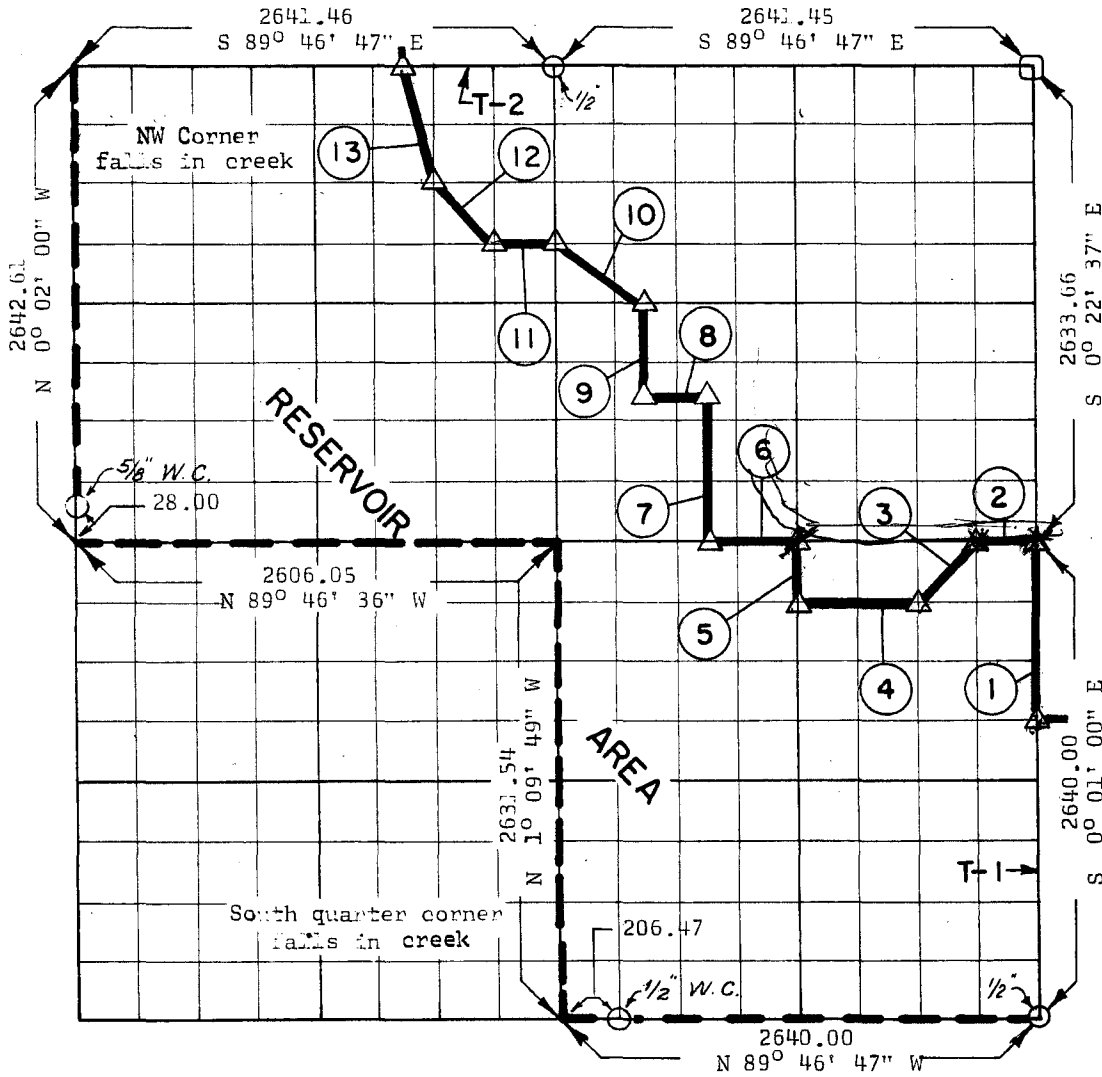


**PARTIAL BOUNDARY SURVEYS  
ROBERT S. KERR LOCK & DAM 15  
ARKANSAS RIVER, OKLAHOMA**

Performed Under Contract Number DA-34-066-Civeng 66-224

**SEC 34 T-11-N R-23-E COUNTY SEQUOYAH**



Course No.	Distance	Bearing	Course No.	Distance	Bearing
1	990.00	N 0° 01' 00" W	T-1	1650.00	N 0° 01' 00" W
2	336.58	N 89° 58' 32" W	T-2	825.32	S 89° 46' 47" E
3	469.83	S 45° 27' 14" W			
4	671.52	N 89° 57' 05" W			
5	329.45	N 0° 35' 21" W			
6	504.87	N 89° 58' 32" W			
7	824.96	N 0° 23' 37" E			
8	334.59	N 89° 54' 54" W			
9	495.19	N 0° 31' 55" E			
10	596.38	N 56° 14' 36" W			
11	328.54	N 89° 46' 43" W			
12	464.58	N 44° 27' 32" W			
13	680.09	N 13° 30' 14" W			
			7,026.58		

CERTIFICATE OF SURVEY Field Book No. KA-2433 Date April 12, 1966

I HEREBY CERTIFY THAT THE ABOVE PLAT IS A TRUE AND CORRECT REPRESENTATION OF THE SURVEY MADE IN SECTION 34, T-11-N, R-23-E, SEQUOYAH COUNTY OKLAHOMA.

**WHEELER & ASSOCIATES, ENGINEERS**

Under the Supervision of

**U.S. ARMY ENGINEER DISTRICT, TULSA  
CORPS OF ENGINEERS**

LEGEND

- ▲ MONUMENT
- ORIGINAL CORNER
- IRON PIN
- HWY R/W MARKER

*W. W. Wheeler*