

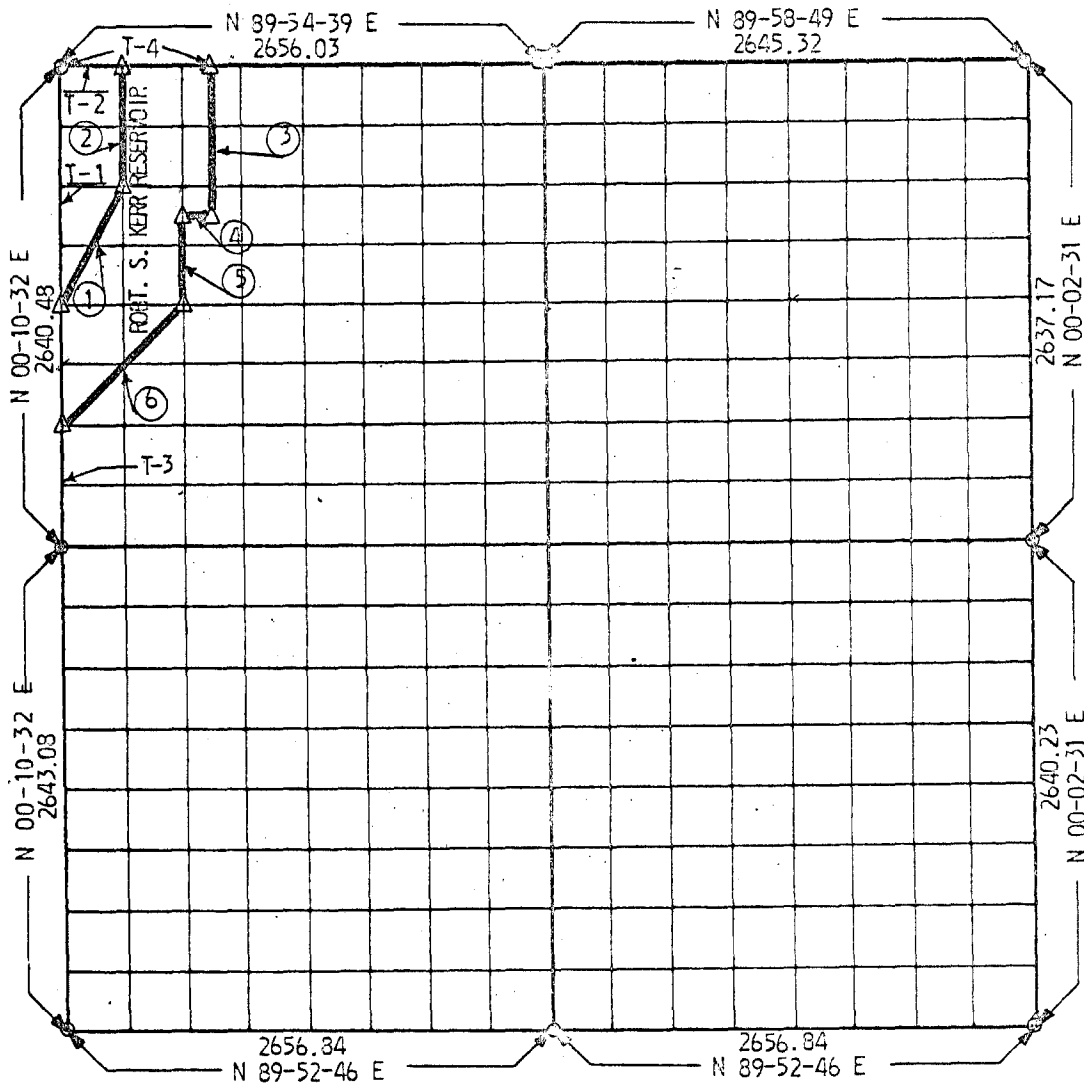
PARTIAL BOUNDARY SURVEYS

ROBERT S. KERR LOCK & DAM IS

ARKANSAS RIVER, OKLAHOMA

Performed Under Contract No. DACW 56-68-C-0105

SEC. 16 T-11-N R-24-E COUNTY SEQUOYAH



Course No.	Distance	Bearing	Course No.	Distance	Bearing
1	740.29	N 26-49-22 E			
2	660.20	N 00-10-28 E			
3	325.15	S 00-10-22 E			
4	166.01	S 89-54-37 W			
5	495.09	S 00-10-24 W			
6	933.51	S 45-12-26 W			
T-1	1320.24				
T-2	332.00				
T-3	660.12				
T-4	830.00				
	3825.25				

CERTIFICATE OF SURVEY

HEREBY CERTIFY THAT THE ABOVE PLAT IS A TRUE AND CORRECT REPRESENTATION OF THE SURVEY MADE IN SECTION 16, T-11, N, R-24 E, SEQUOYAH COUNTY, OKLAHOMA.

Field Book No. A-2314

Date 5-18-68

PHELPS, SPITZ, AMMERMAN & THOMAS INC.

Under the Supervision of

U.S. ARMY ENGINEER DISTRICT, TULSA
CORPS OF ENGINEERS

LEGEND

- △ MONUMENT
- ORIGINAL CORNER
- IRON PIN