

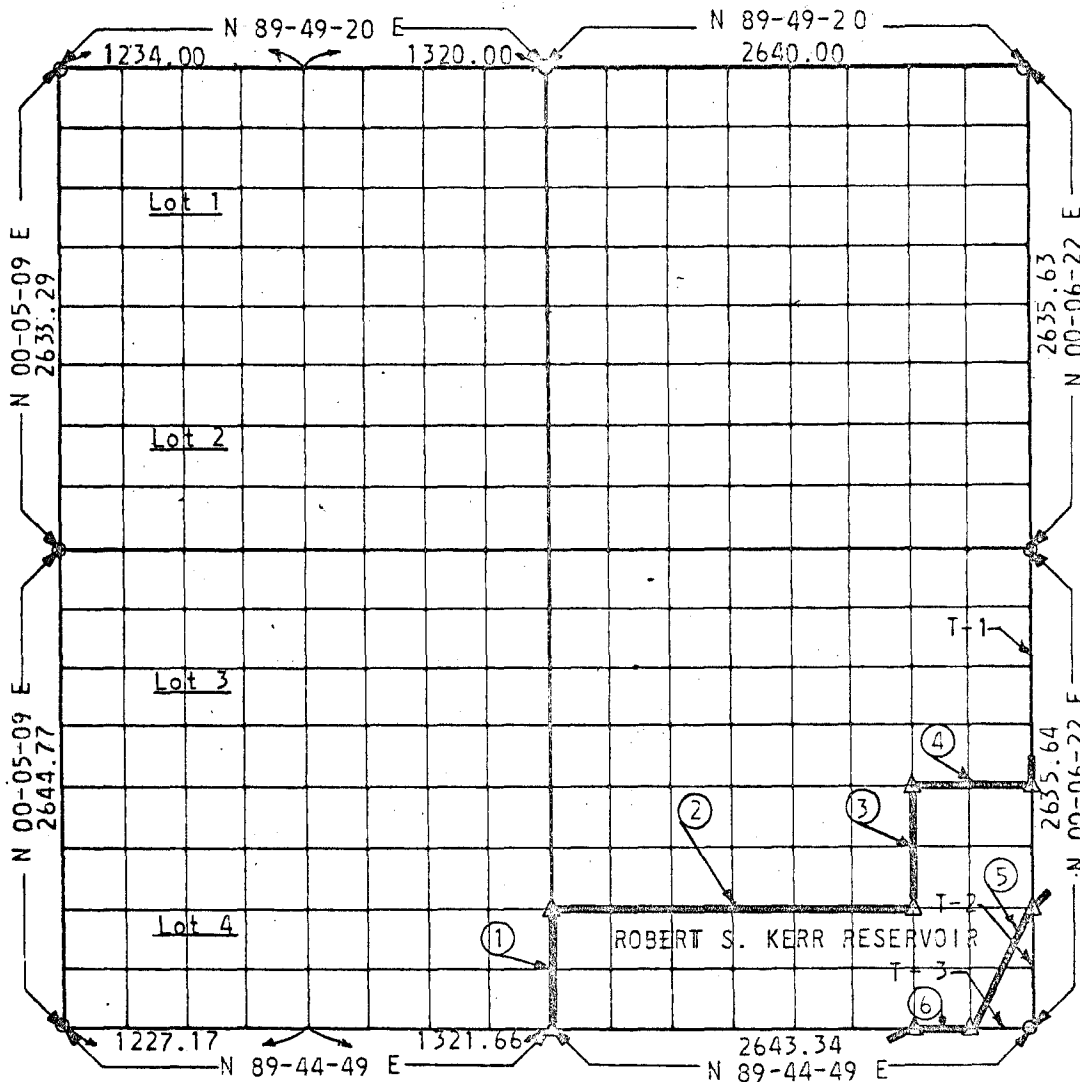
PARTIAL BOUNDARY SURVEYS

ROBERT S. KERR LOCK & DAM 15

ARKANSAS RIVER, OKLAHOMA

Performed Under Contract No. DACW 56-68-C-0105

SEC. 18 T-11 -N R-24 -E COUNTY SEQUOYAH



Course No.	Distance	Bearing	Course No.	Distance	Bearing
1	660.08	N 00-18-19 E			
2	1980.78	N 89-46-20 E			
3	659.20	N 00-09-22 E			
4	659.68	N 89-47-51 E			
5	738.96	S 26-39-57 W			
6	330.42	S 89-44-50 W			
T-1	1317.82				
T-2	658.91				
T-3	330.42				
	5,029.17				

CERTIFICATE OF SURVEY

HEREBY CERTIFY THAT THE ABOVE PLAT IS A TRUE AND CORRECT REPRESENTATION OF THE SURVEY MADE IN SECTION 18, T-11, N, R-24, E, SEQUOYAH COUNTY, OKLAHOMA.

Field Book No. A-2816 Date 5-2-68

PHELPS, SPITZ, AMMERMAN & THOMAS INC.

Under the Supervision of

U.S. ARMY ENGINEER DISTRICT, TULSA  
CORPS OF ENGINEERS

LEGEND

- △ MONUMENT
- ORIGINAL CORNER
- IRON PIN