

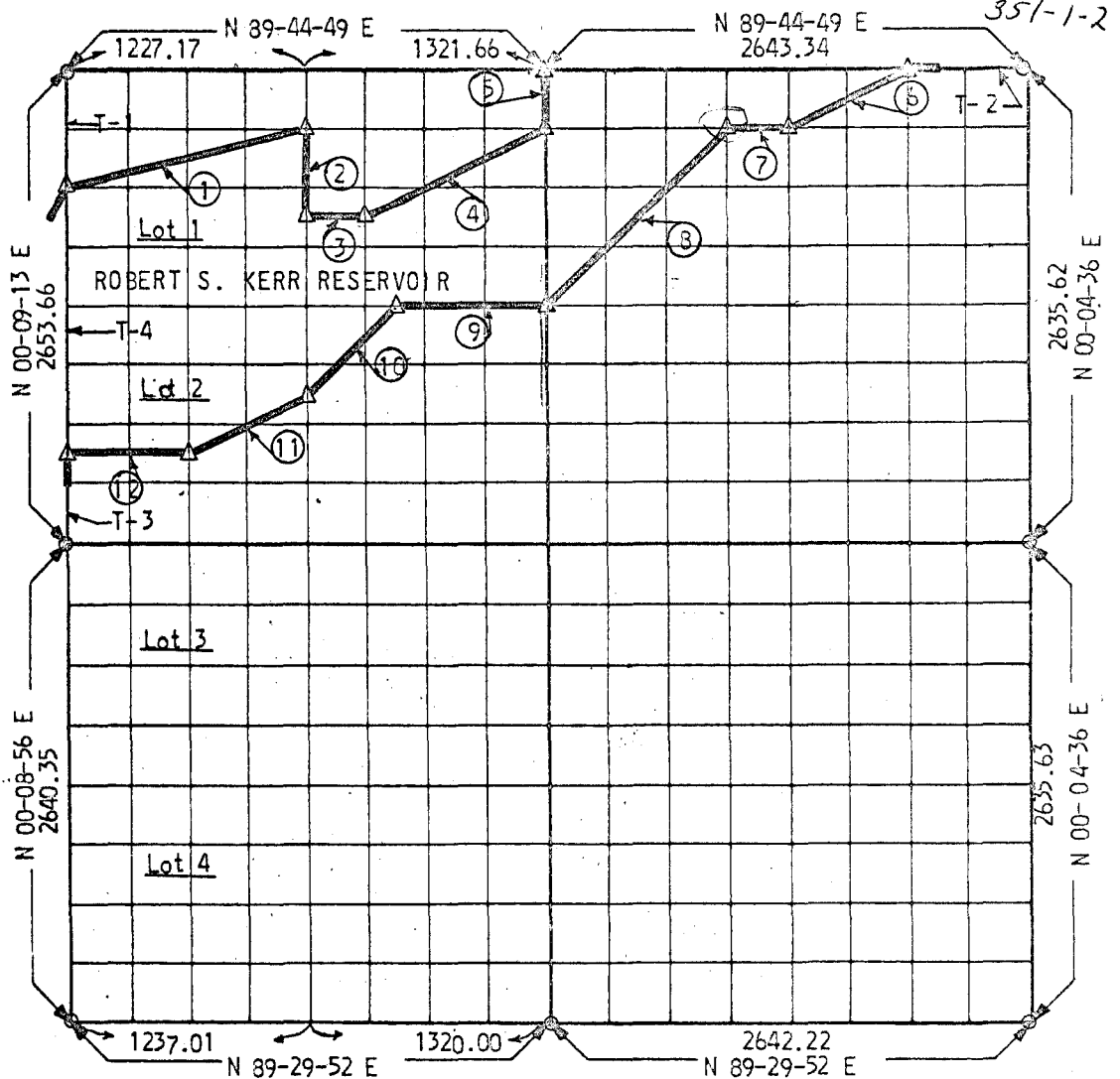
PARTIAL BOU RY SURVEYS

ROBERT S. KERR LOCK & DAM 15

ARKANSAS RIVER, OKLAHOMA

Performed Under Contract No. DACW 56-68-C-0105

SEC. 19 T-11-N R-24-E COUNTY SEQUOYAH



Course No.	Distance	Bearing	Course No.	Distance	Bearing
1	1273.84	N 74-37-43 E	T-1	663.42	
2	496.76	S 00-06-50 W	T-2	660.84	
3	330.25	N 89-42-06 E	T-3	497.56	
4	1112.14	N 63-11-58 E	T-4	1492.68	
5	330.60	N 00-03-49 E			
6	740.33	S 63-16-25 W			
7	330.41	S 89-43-21 W			
8	1406.38	S 44-52-35 W			
9	825.94	S 89-38-50 W			
10	705.48	S 44-53-19 W			
11	700.26	S 61-23-59 W			
12	614.52	S 89-32-56 W			
		<i>R.P. (6/9)</i>			

CERTIFICATE OF SURVEY

HEREBY CERTIFY THAT THE ABOVE PLAT IS A TRUE AND CORRECT REPRESENTATION OF THE SURVEY MADE IN SECTION 19, T-11-N, R-24-E, SEQUOYAH COUNTY, OKLAHOMA.

Field Book No. A-2317 Date 5-7-68

PHELPS, SPITZ, AMMERMAN & THOMAS INC.

Under the Supervision of

U.S. ARMY ENGINEER DISTRICT, TULSA
CORPS OF ENGINEERS

SHEET 10 of 14

LEGEND

- △ MONUMENT
- ORIGINAL CORNER
- IRON PIN