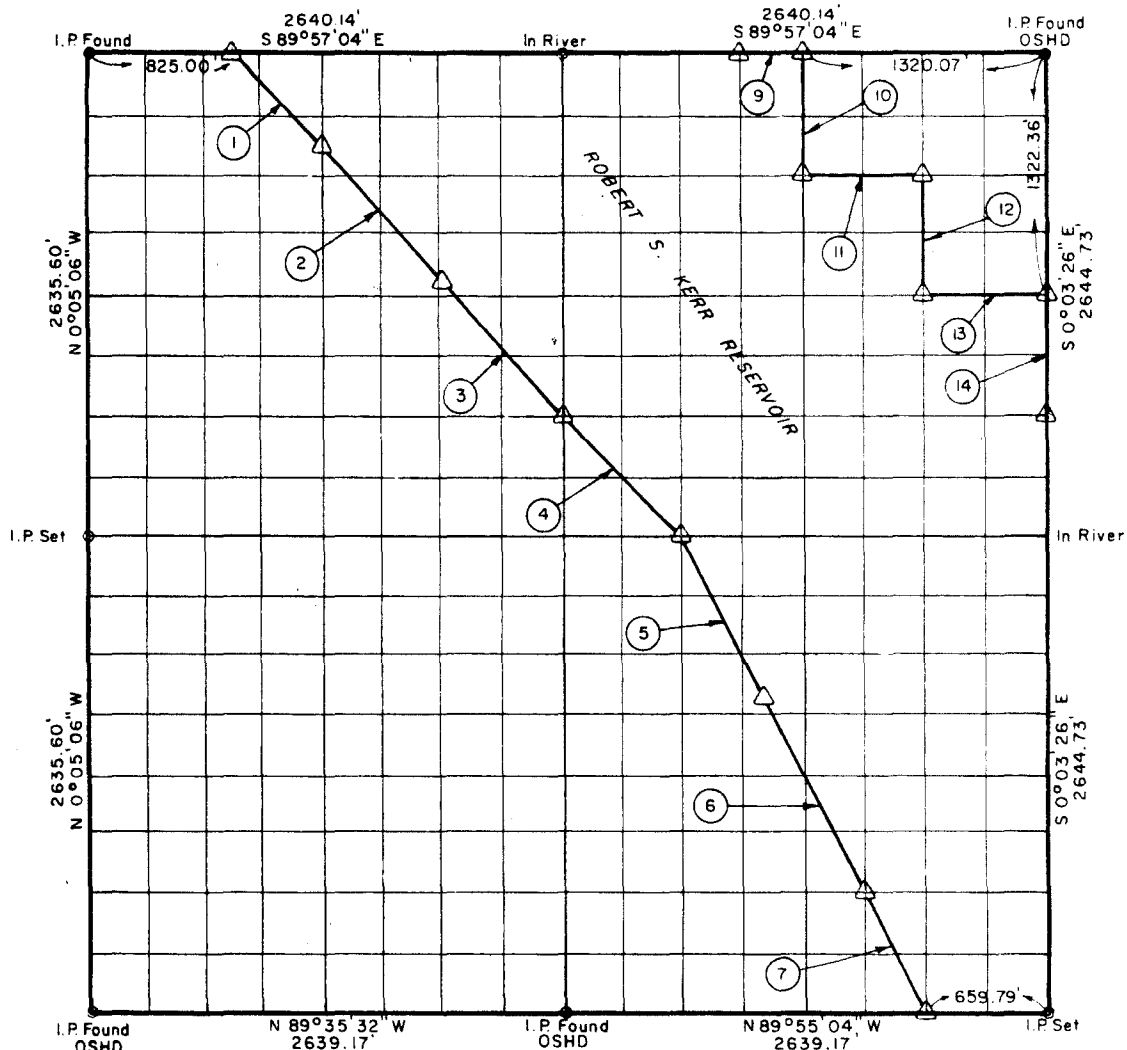


12



Date Surveyed July 1968

Book No. A-2867

Scale: 1:10,000

| COURSE NO. | DISTANCE | BEARING | COURSE NO. | DISTANCE | BEARING |
|------------|-----------|-----------------|------------|----------------------|----------------|
| 1 | 700.77' | S 44° 58' 28" E | 14 | 661.18' | S 0° 03' 26" E |
| 2 | 1,000.00' | S 41° 35' 42" E | | | |
| 3 | 991.25' | S 41° 35' 42" E | | | |
| 4 | 935.13' | S 44° 57' 24" E | | | |
| 5 | 1,000.00' | S 26° 33' 42" E | | | |
| 6 | 1,218.61' | S 26° 33' 42" E | | | |
| 7 | 739.59' | S 26° 33' 09" E | | | |
| 9 | 330.02' | S 89° 57' 04" E | | | |
| 10 | 661.08' | S 0° 03' 51" E | | | |
| 11 | 660.00' | S 89° 56' 49" E | | | |
| 12 | 661.13' | S 0° 03' 38" E | | | |
| 13 | 659.98' | S 89° 56' 34" E | | | |
| | | | | NOTE | |
| | | | | Course No. 8 omitted | |

PARTIAL BOUNDARY SURVEYS, ROBERT S. KERR LOCK & DAM 15, ARKANSAS RIVER, OKLAHOMA

BY
CRAIG AND KEITHLINE
CONSULTING ENGINEERS

FOR
DEPARTMENT OF THE ARMY, CORPS OF ENGINEERS, TULSA DISTRICT, UNDER
CONTRACT NO. DACW 56-68-C-0242

I, Charles R. Keithline, a Registered Professional Engineer in the State of Oklahoma do hereby certify that the above plat is a true and accurate survey of Section 12, T-12-N, R-20-E, as made under my supervision.

Charles R. Keithline
CHARLES R. KEITHLINE, Reg. No. 2834 (Okla.)



LEGEND

- △ Std. C. of E. Conc. Monument
- Iron Pin
- Original Stone