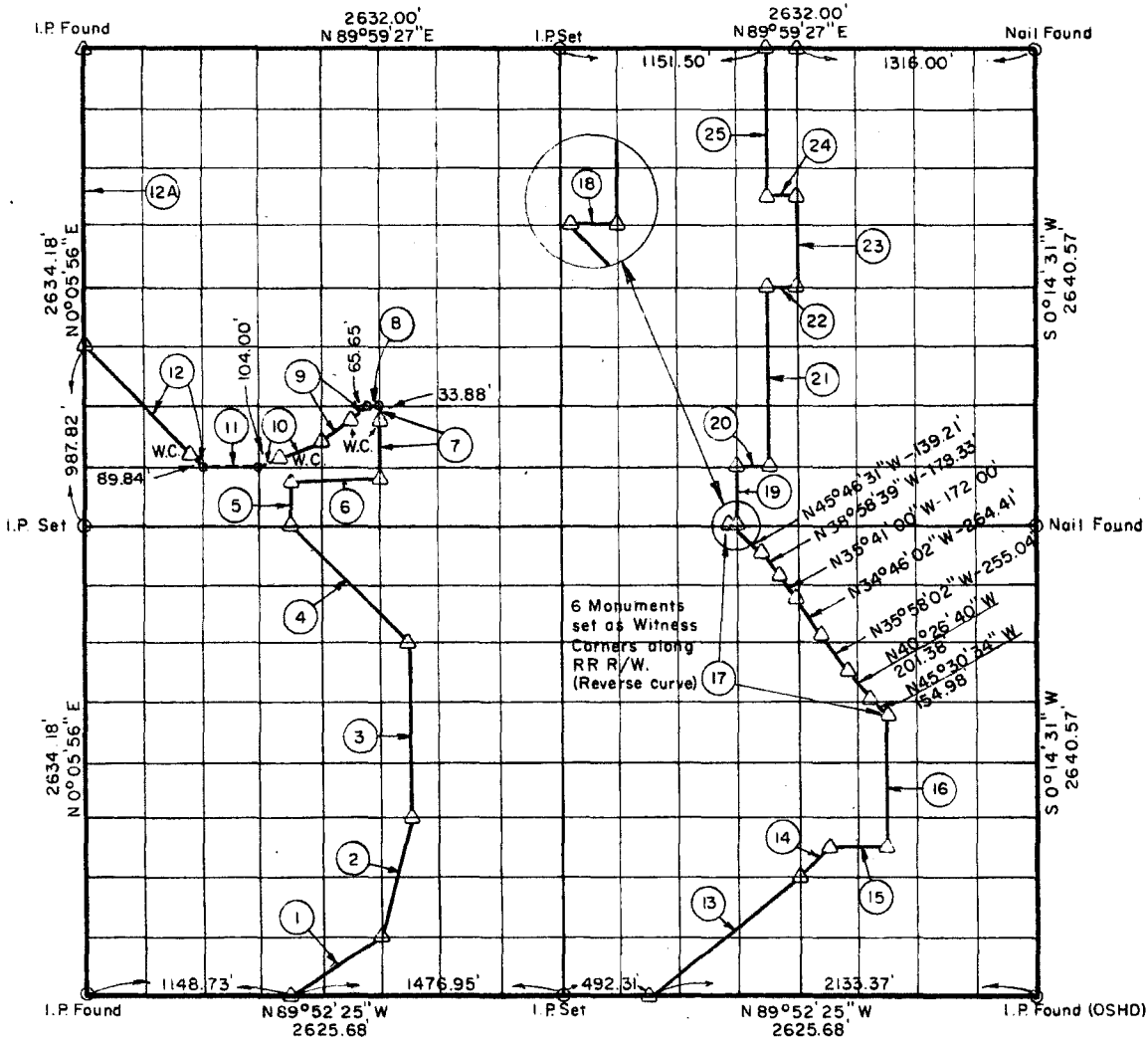


SEC. 16, T-12-N, R-21-E, SEQUOYAH COUNTY, OKLAHOMA



Date Surveyed July 1968 Book No. A-2872 Scale: 1:10,000

COURSE NO.	DISTANCE	BEARING	COURSE NO.	DISTANCE	BEARING
1	592.51'	N 56°20'13\" E	13	1,053.58'	N 51°21'26\" E
2	679.59'	N 14°07'32\" E	14	232.92'	N 45°01'15\" E
3	988.63'	N 0°08'54\" E	15	328.34'	S 89°53'41\" E
4	929.81'	N 44°49'45\" W	16	750.68'	N 0°13'11\" E
5	266.43'	N 0°07'49\" E	17	See Plat	
6	497.30'	N 82°01'03\" E	18	34.59'	S 89°56'29\" E
7	322.72'	N 0°08'38\" E	19	329.82'	N 0°11'50\" E
8	13.70'	N 89°57'30\" W	20	164.33'	S 89°57'00\" E
9	368.13'	S 58°58'10\" W	21	989.55'	N 0°12'07\" E
10	357.21'	S 67°04'06\" W	22	164.40'	S 89°58'31\" E
11	328.65'	N 89°57'00\" W	23	494.81'	N 0°12'23\" E
12	930.06'	N 44°52'19\" W	24	164.44'	N 89°59'17\" W
12A	1,646.36'	N 0°05'56\" E	25	824.62'	N 0°12'07\" E

PARTIAL BOUNDARY SURVEYS, ROBERT S. KERR LOCK & DAM 15, ARKANSAS RIVER OKLAHOMA

BY CRAIG AND KEITHLINE CONSULTING ENGINEERS

FOR DEPARTMENT OF THE ARMY, CORPS OF ENGINEERS, TULSA DISTRICT, UNDER CONTRACT NO. DACW 56-68-C-0242

I, Charles R. Keithline, a Registered Professional Engineer in the State of Oklahoma do hereby certify that the above plat is a true and accurate survey of Section 16, T-12-N, R-21-E, as made under my supervision.

Charles R. Keithline
CHARLES R. KEITHLINE, Reg. No. 2834 (Okla.)

LEGEND

- △ Std. C. of E. Conc. Monument
- Iron Pin

