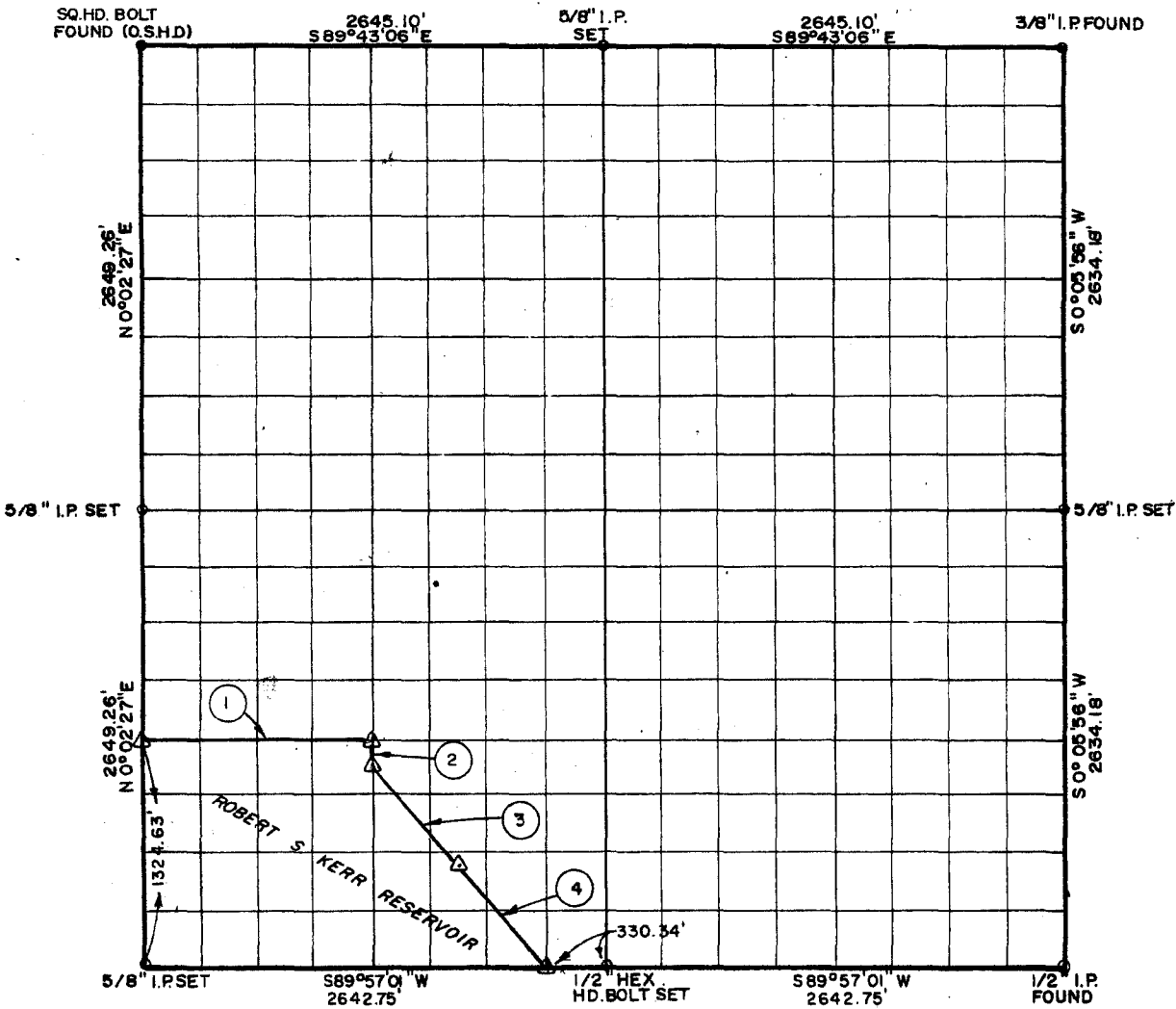


SEC. 17, T-12 -N, R-21 -E, SEQ. JOYAH COUNTY, OKLAHOMA



Date Surveyed JUNE 1968 Book No. A-2673 Scale: 1:10,000

COURSE NO.	DISTANCE	BEARING	COURSE NO.	DISTANCE	BEARING
1	1,321.67	S89°58'01\"E			
2	165.34	S 0°03'20\"W			
3	750.00	S40°33'17\"E			
4	772.32	S40°33'17\"E			
3,009.33 ✓					

PARTIAL BOUNDARY SURVEYS, ROBERT S. KERR LOCK & DAM 15, ARKANSAS RIVER  
OKLAHOMA

BY  
**CRAIG AND KEITHLINE**  
CONSULTING ENGINEERS

FOR  
DEPARTMENT OF THE ARMY, CORPS OF ENGINEERS, TULSA DISTRICT, UNDER  
CONTRACT NO. DACW 56-68-C-0242

I, Charles R. Keithline, a Registered Professional Engineer in the State of Oklahoma do hereby certify that the above plot is a true and accurate survey of Section 17, T-12-N, R-21-E, as made under my supervision.

*Charles R. Keithline*  
CHARLES R. KEITHLINE, Reg. No. 2834 (Okla.)



LEGEND

- △ Std. C. of E. Conc. Monument
- Iron Pin
- Original Boundary