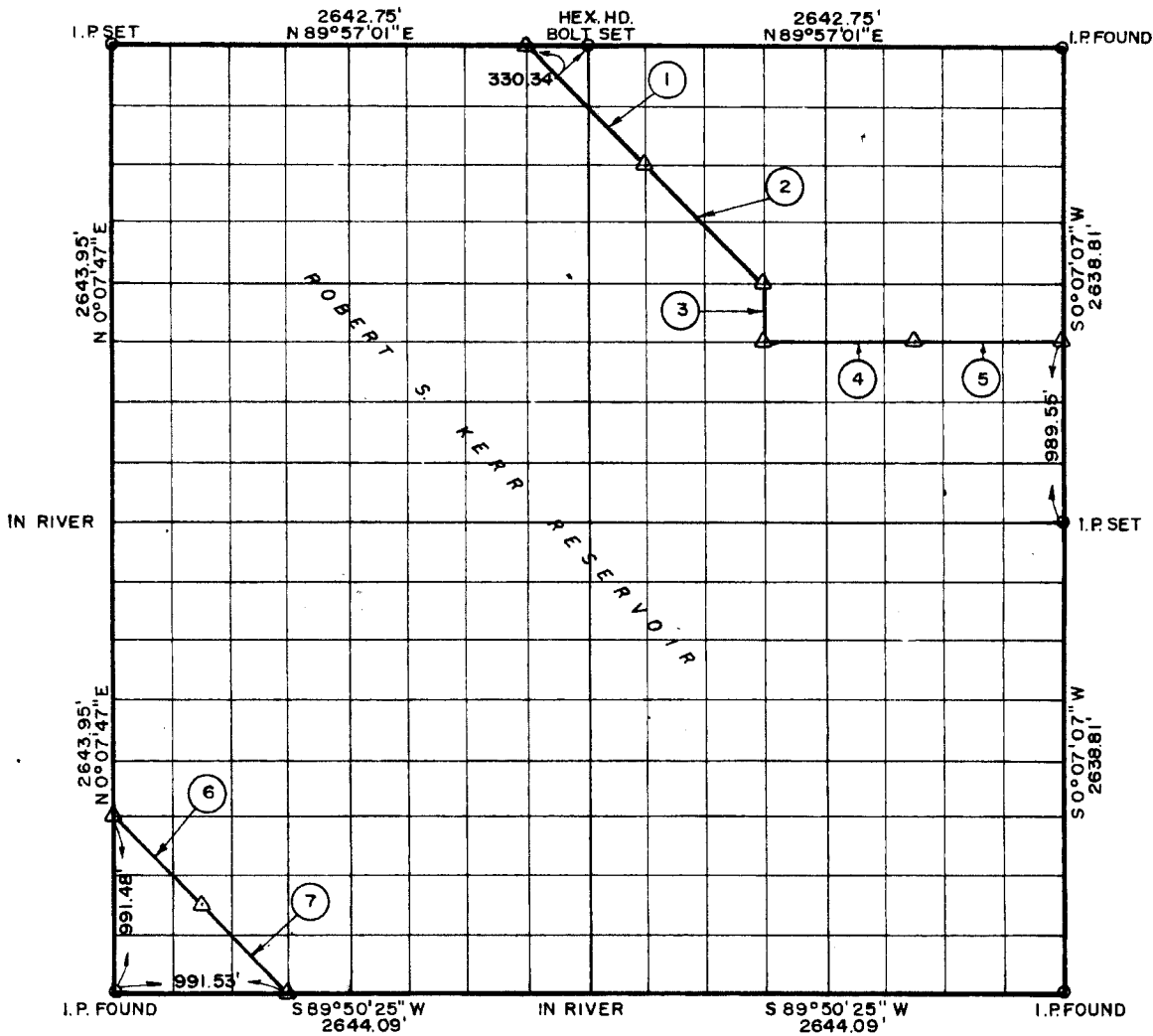


SEC 20, T-12-N, R-21-E, MUSKOGEE & SEQUOYAH COUNTIES, OKLA.

20



Date Surveyed JULY 1968 Book No. A-2876 Scale: 1:10,000

COURSE NO.	DISTANCE	BEARING	COURSE NO.	DISTANCE	BEARING
1	932.59'	S 44° 59' 30" E			
2	932.59'	S 44° 59' 30" E			
3	330.05'	S 0° 07' 20" W			
4	826.05'	N 89° 54' 58" E			
5	826.05'	N 89° 54' 58" E			
6	699.33'	S 45° 00' 59" E			
7	699.33'	S 45° 00' 59" E			
	5,245.00' ✓				

PARTIAL BOUNDARY SURVEYS, ROBERT S. KERR LOCK & DAM 15, ARKANSAS RIVER OKLAHOMA

BY
CRAIG AND KEITHLINE
CONSULTING ENGINEERS

FOR
DEPARTMENT OF THE ARMY, CORPS OF ENGINEERS, TULSA DISTRICT, UNDER
CONTRACT NO. DACW 56-68-C-0242

I, Charles R. Keithline, a Registered Professional Engineer in the State of Oklahoma do hereby certify that the above plat is a true and accurate survey of Section 20, T-12-N, R-21-E, as made under my supervision.

Charles R. Keithline
CHARLES R. KEITHLINE, Reg. No. 2834 (Okla.)



LEGEND

- △ Std. C. of E. Conc. Monument
- Iron Pin
- Original Stake