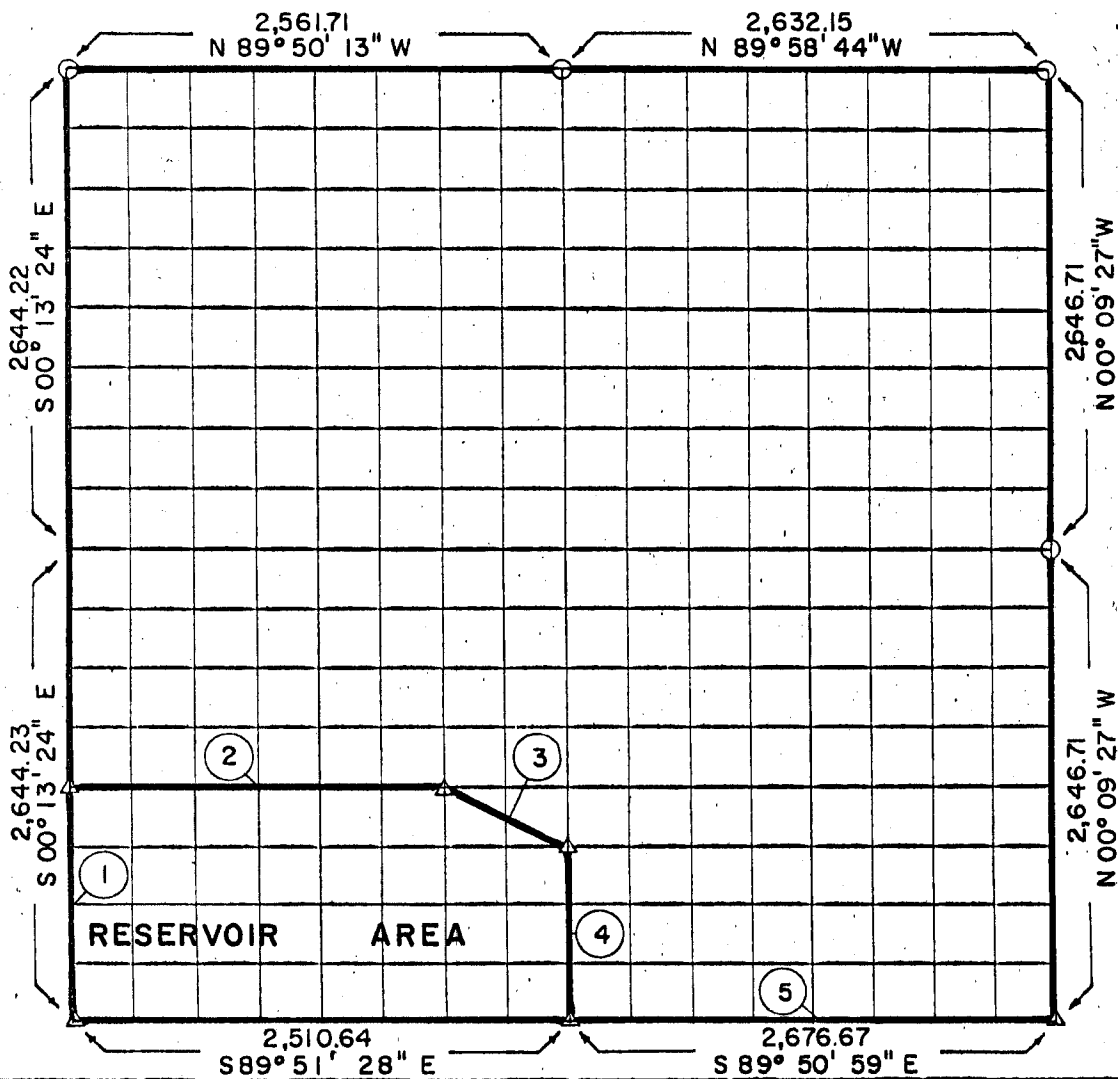


PARTIAL BOUNDARY SURVEYS
 ROBERT S. KERR LOCK & DAM IS
 ARKANSAS RIVER, OKLAHOMA

Performed Under Contract Number DACW56-68-C-0243

SEC 31 T-12-N R-21-E COUNTY SEQUOYAH



Course No.	Distance	Bearing	Course No.	Distance	Bearing
1.	1322.11	N00°13'24"W			
2.	1892.56	S89°51'09"E			
3.	711.23	S62°09'58"E			
4.	991.39	S00°19'48"W			
5.	2676.67	S89°50'59"E			
		7,503.90			

Book No. A 2888

Date: November 14, 1968

- △ Monument
- Iron Pin
- Original Corner

I, Jack R. Kalman, a Registered Professional Engineer, do hereby certify that the above plat is a true and accurate survey of Section 31, T-12-N, R-21-E as made under my supervision.

Jack R. Kalman
 JACK R. KALMAN
 Reg. Prof. Engr. No. 2786