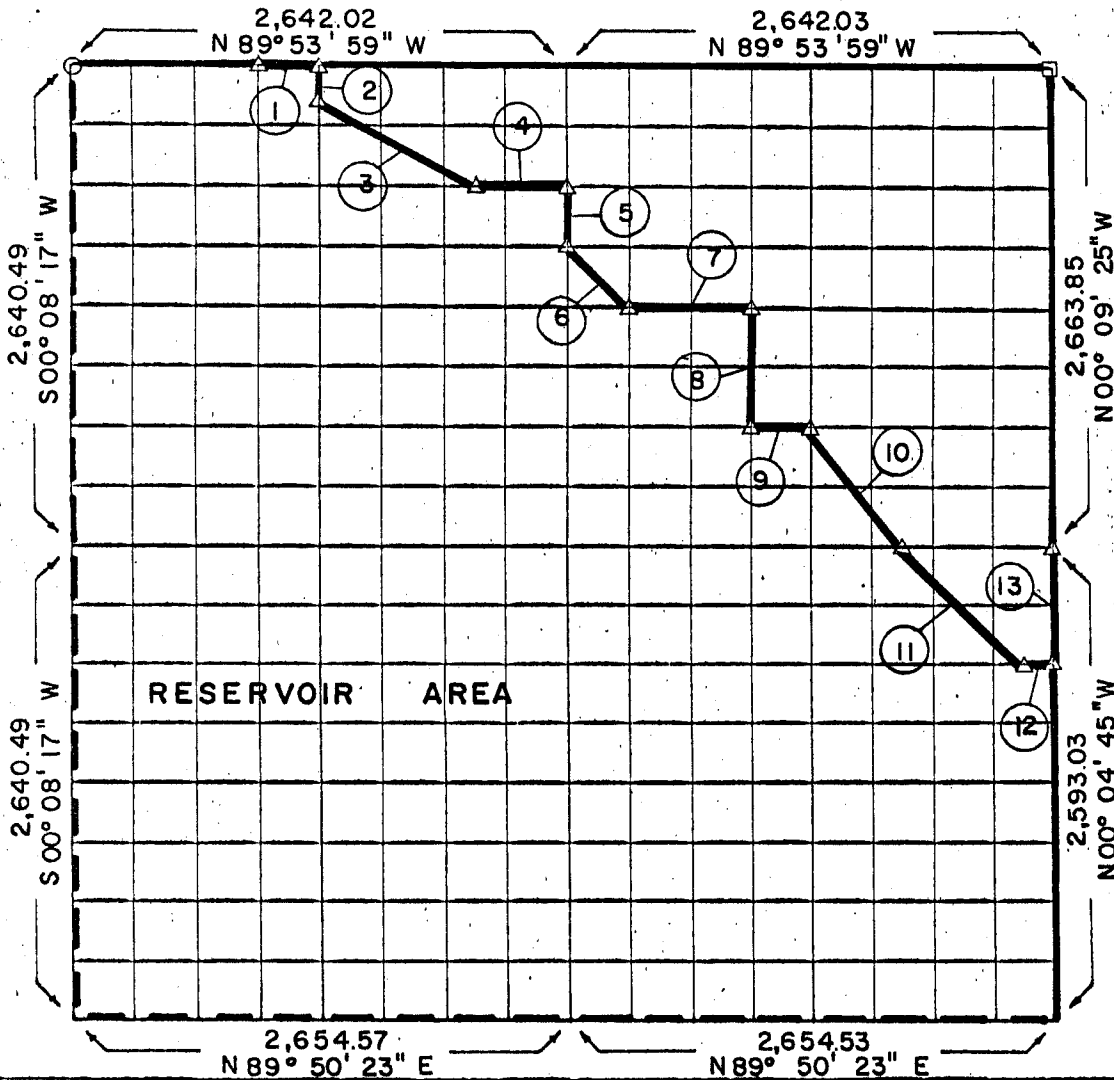


PARTIAL BOUNDARY SURVEYS
ROBERT S. KERR LOCK & DAM 15
ARKANSAS RIVER, OKLAHOMA

Performed Under Contract Number DACW 56-68-C-0243

SEC 34 T-12-N R-21-E COUNTY SEQUOYAH

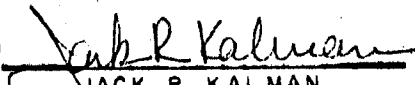


Course No.	Distance	Bearing	Course No.	Distance	Bearing
1.	330.25	S89°53'59"E			
2.	165.40	S08°03'52"W			
3.	964.50	S31°07'28"E			
4.	495.73	S89°50'12"E			
5.	331.52	S00°00'34"E			
6.	469.29	S44°49'03"E			
7.	661.45	S89°46'25"E			
8.	664.14	S00°03'53"E			
9.	330.96	S89°42'38"E			
10.	832.70	S36°42'39"E			
11.	930.51	S45°27'25"E			
12.	165.68	S89°46'33"E			
13.	648.26	N00°04'45"W			

Book No. A 2890 ^{6,990.39} Date: November 14, 1968

- △ Monument
- Original Corner
- Iron Pin

I, Jack R. Kalman, a Registered Professional Engineer, do hereby certify that the above plot is a true and accurate survey of Section 34, T-12-N, R-21-E as made under my supervision.


JACK R. KALMAN
 Reg. Prof. Engr. No. 2786