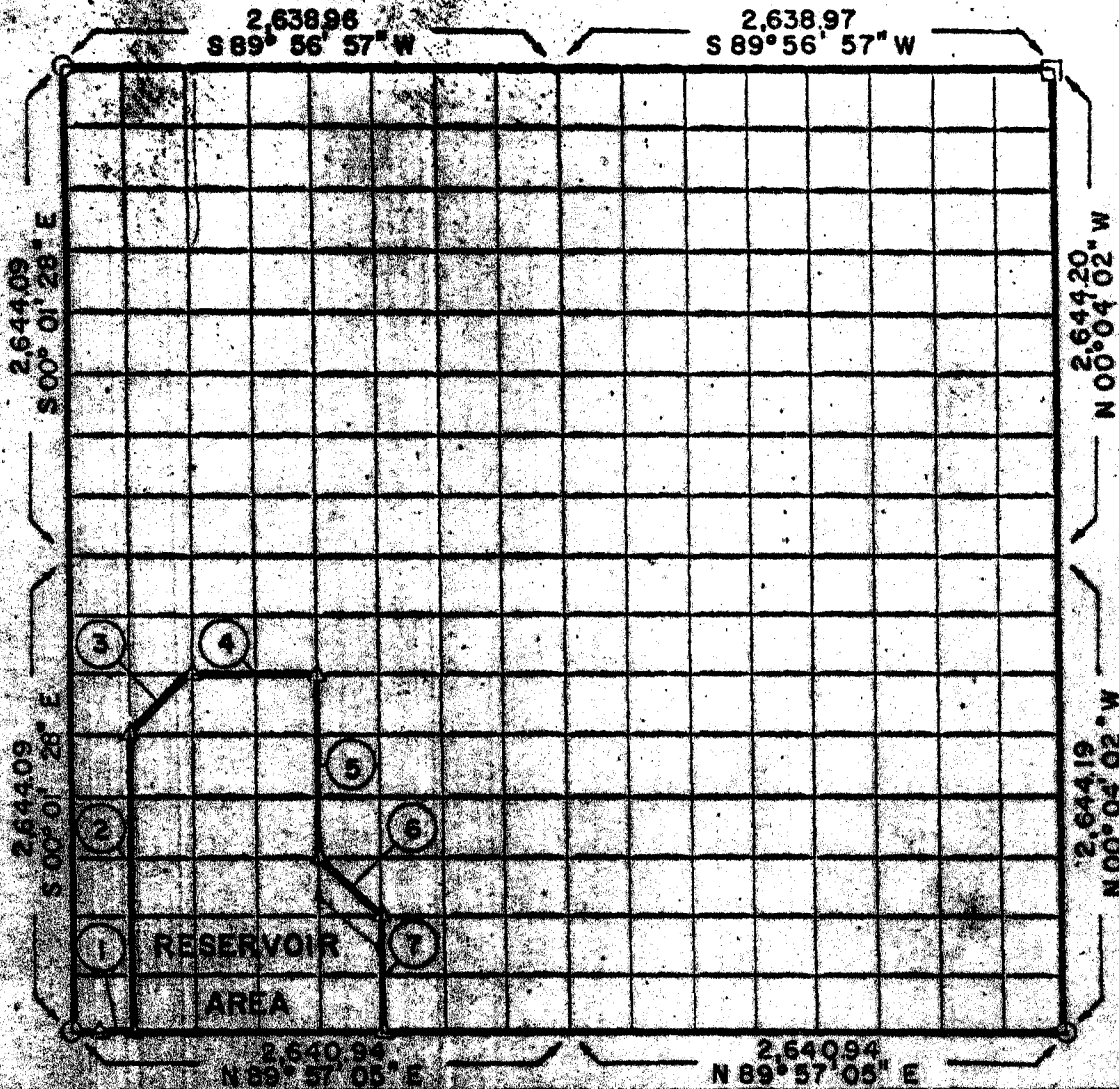


PARTIAL BOUNDARY SURVEYS
 ROBERT S. KERR LOCK & DAM IS
 ARKANSAS RIVER, OKLAHOMA

Performed Under Contract Number DACW 56-68-C-0243

SEC 36 T-12-N R-21-E COUNTY SEQUOYAH



Course No.	Distance	Bearing	Course No.	Distance	Bearing
1.	165.06	N 89° 57' 05" E			
2.	1652.51	N 00° 02' 00" W			
3.	467.10	N 89° 55' 22" E			
4.	660.10	N 89° 57' 37" E			
5.	1156.67	S 00° 02' 30" E			
6.	467.08	S 89° 00' 41" E			
7.	495.79	S 00° 02' 47" E			

Book No. A 2892

Date: December 14, 1968

- ▲ Monument
- Original Corner
- Iron Pin

I, Jack R. Kalman, a Registered Professional Engineer, do hereby certify that the above plat is a true and accurate survey of Section 36, T-12-N, R-21-E, as made under my supervision.

Jack R. Kalman
 JACK R. KALMAN
 Reg. Prof. Eng.