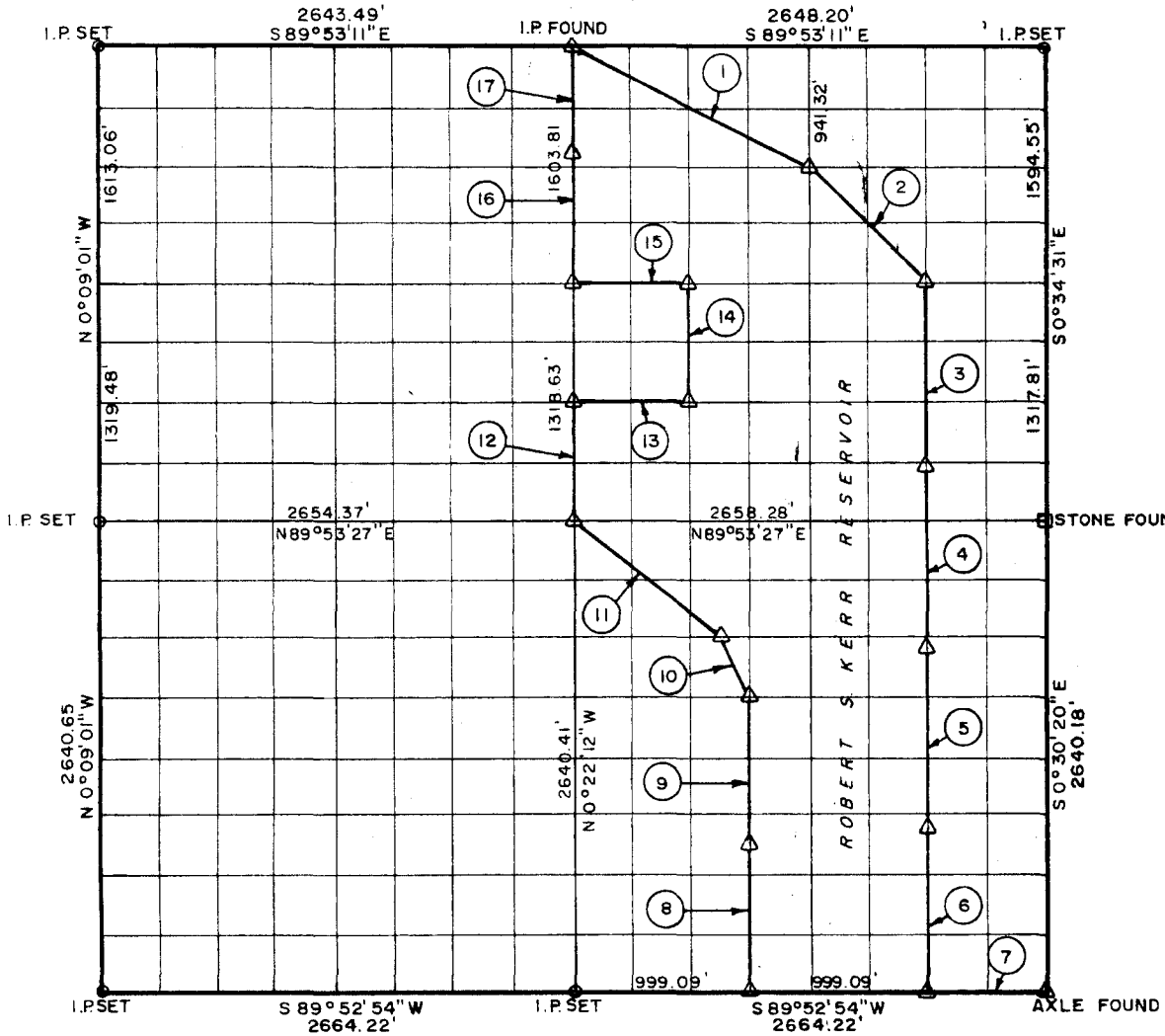


SEC. 4, T-12-N, R-21-E, SEQUOIA COUNTY, OKLAHOMA



Date Surveyed JUNE 1968 Book No. A-2869 Scale: 1:10,000

COURSE NO.	DISTANCE	BEARING	COURSE NO.	DISTANCE	BEARING
1	1,632.03'	S 54° 40' 04" E	13	663.98'	N 89° 54' 00" E
2	937.08'	S 45° 30' 18" E	14	659.21'	N 0° 24' 45" W
3	1,000.00'	S 0° 29' 51" E	15	663.39'	S 89° 54' 34" W
4	1,040.00'	S 0° 29' 51" E	16	1,000.00'	N 0° 22' 12" W
5	960.00'	S 0° 29' 51" E	17	603.81'	N 0° 22' 12" W
6	958.26'	S 0° 29' 51" E			
7	666.06'	N 89° 52' 54" E			
8	825.10'	N 0° 26' 01" W			
9	825.10'	N 0° 26' 01" W			
10	370.33'	N 27° 05' 22" W			
11	1,063.74'	N 51° 45' 21" W			
12	659.32'	N 0° 22' 12" W			

PARTIAL BOUNDARY SURVEYS, ROBERT S. KERR LOCK & DAM 15, ARKANSAS RIVER OKLAHOMA

BY
CRAIG AND KEITHLINE
CONSULTING ENGINEERS

FOR

DEPARTMENT OF THE ARMY, CORPS OF ENGINEERS, TULSA DISTRICT, UNDER CONTRACT NO. DACW 56-68-C-0242

I, Charles R. Keithline, a Registered Professional Engineer in the State of Oklahoma do hereby certify that the above plot is a true and accurate survey of Section 4, T-12-N, R-21-E, as made under my supervision.



Charles R. Keithline
CHARLES R. KEITHLINE, Reg. No. 2834 (Okla.)

LEGEND

- △ Std. C. of E. Conc. Monument
- Iron Pin
- Original Stone