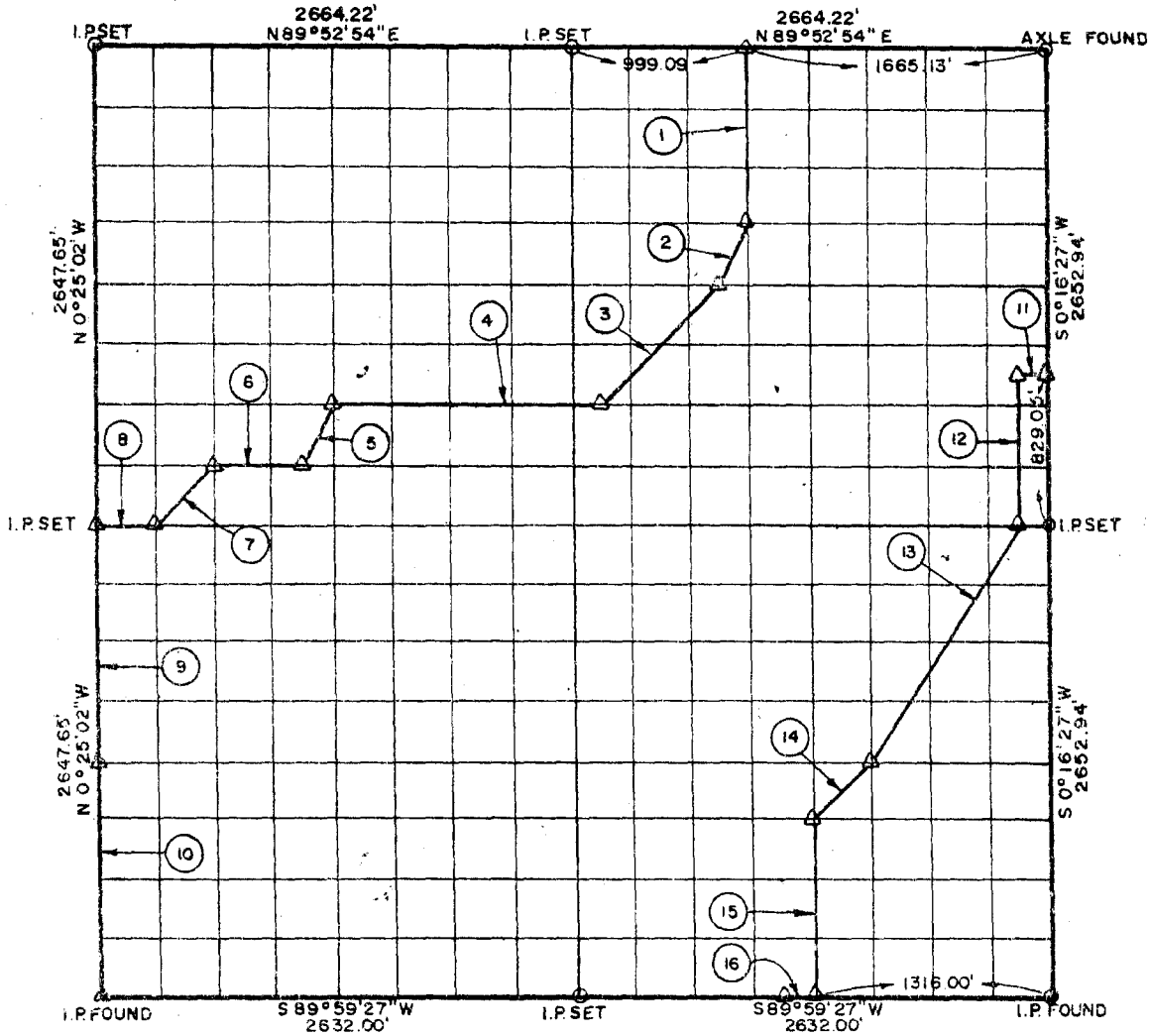


SEC. 9, T-12-N, R-21-E, SEQUOIA COUNTY, OKLAHOMA



Date Surveyed JUNE 1968 Book No. A-2871 Scale: 1:10,000

COURSE NO.	DISTANCE	BEARING	COURSE NO.	DISTANCE	BEARING
1	994.23'	S 00° 03' 30" W	13	1,565.57'	S 32° 03' 12" W
2	371.05'	S 26° 38' 10" W	14	468.29'	S 44° 54' 30" W
3	938.42'	S 44° 59' 27" W	15	994.36'	S 0° 06' 05" W
4	1,491.83'	S 89° 55' 21" W	16	164.50'	S 89° 59' 27" W
5	369.79'	S 21° 21' 56" W			
6	496.90'	S 89° 55' 46" W			
7	467.05'	S 48° 48' 02" W			
8	331.01'	S 89° 56' 10" W			
9	1,323.83'	S 0° 25' 02" E			
10	1,323.83'	S 0° 25' 02" E			
11	165.82'	S 89° 55' 09" W			
12	828.99'	S 0° 15' 10" W			
			12,295.47'		

PARTIAL BOUNDARY SURVEYS, ROBERT S. KERR LOCK & DAM 15, ARKANSAS RIVER OKLAHOMA

BY CRAIG AND KEITHLINE CONSULTING ENGINEERS

FOR

DEPARTMENT OF THE ARMY, CORPS OF ENGINEERS, TULSA DISTRICT, UNDER CONTRACT NO. DACW 56-68-C-0242

I, Charles R. Keithline, a Registered Professional Engineer in the State of Oklahoma do hereby certify that the above plot is a true and accurate survey of Section 9, T-12-N, R-21-E, as made under my supervision.

Charles R. Keithline
CHARLES R. KEITHLINE, Reg. No. 2834 (Om.)



LEGEND

- △ Std. C. of E. Conc. Monument
- Iron Pin
- Original Stone