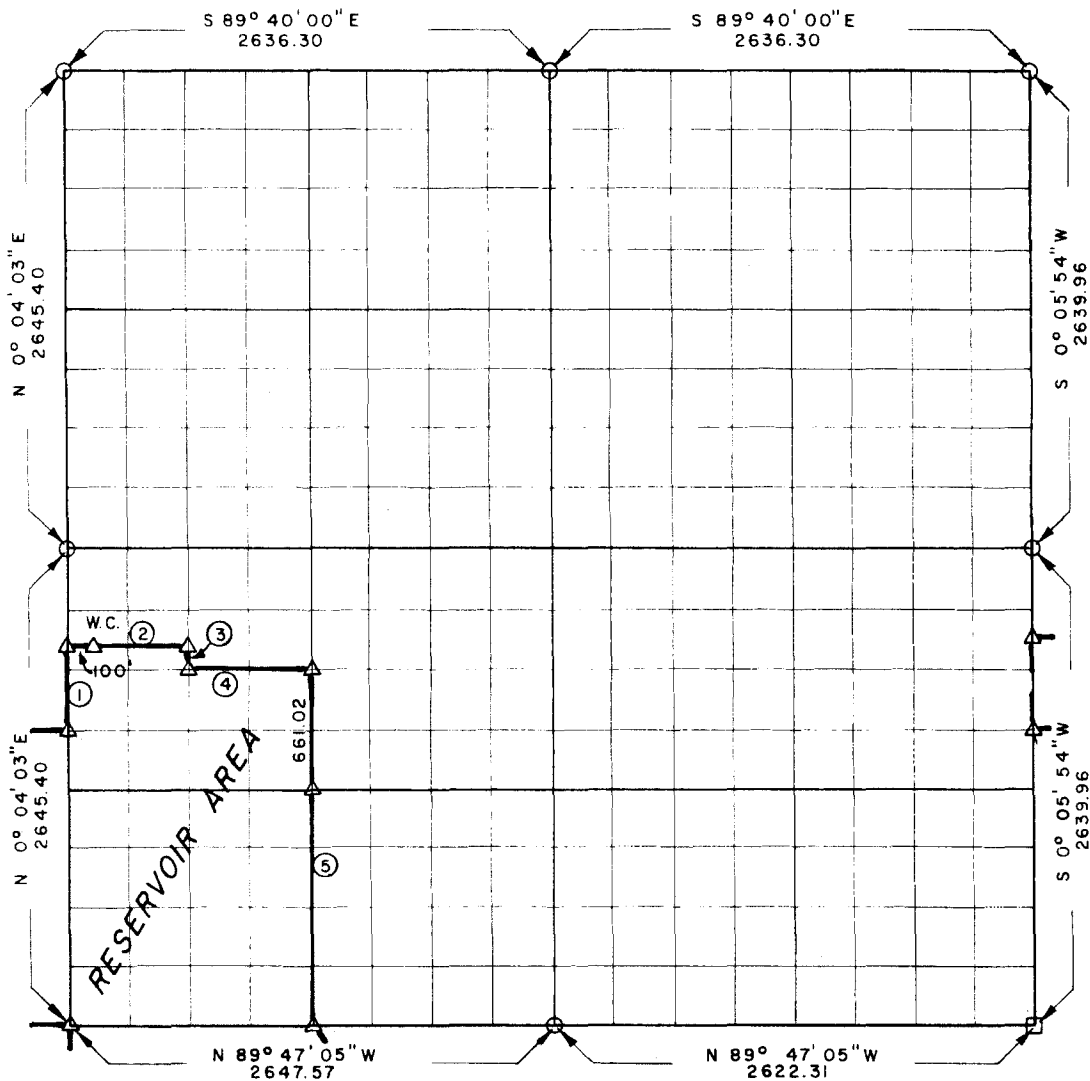


PARTIAL BOUNDARY SURVEYS
 ROBERT S. KERR LOCK & DAM 15
 ARKANSAS RIVER, OKLAHOMA

Performed Under Contract Number DACW 56-68-C-0101

SEC 34 T 12 N R 22 E COUNTY SEQUOYAH



Course No.	Distance	Bearing	Course No.	Distance	Bearing
1	496.00	N 0° 04' 03" E			
2	660.76	S 89° 44' 12" E			
3	165.30	S 0° 02' 14" W			
4	660.84	S 89° 44' 25" E			
5	1983.06	S 0° 00' 25" W			

CERTIFICATE OF SURVEY Field Book No. A-2769 Date MARCH 1968

I, JAMES E. CURRY, A REGISTERED PROFESSIONAL ENGINEER, DO HEREBY CERTIFY THAT THE ABOVE PLAT IS A TRUE AND ACCURATE SURVEY OF SEC. 34, T. 12 N., R. 22 E., OKLAHOMA, AS MADE UNDER MY SUPERVISION.

JAMES E. CURRY COMPANY
 Under the Supervision of
 U.S. ARMY ENGINEER DISTRICT, TULSA
 CORPS OF ENGINEERS

LEGEND
 Δ MONUMENT
 □ ORIGINAL CORNER
 ○ IRON PIN