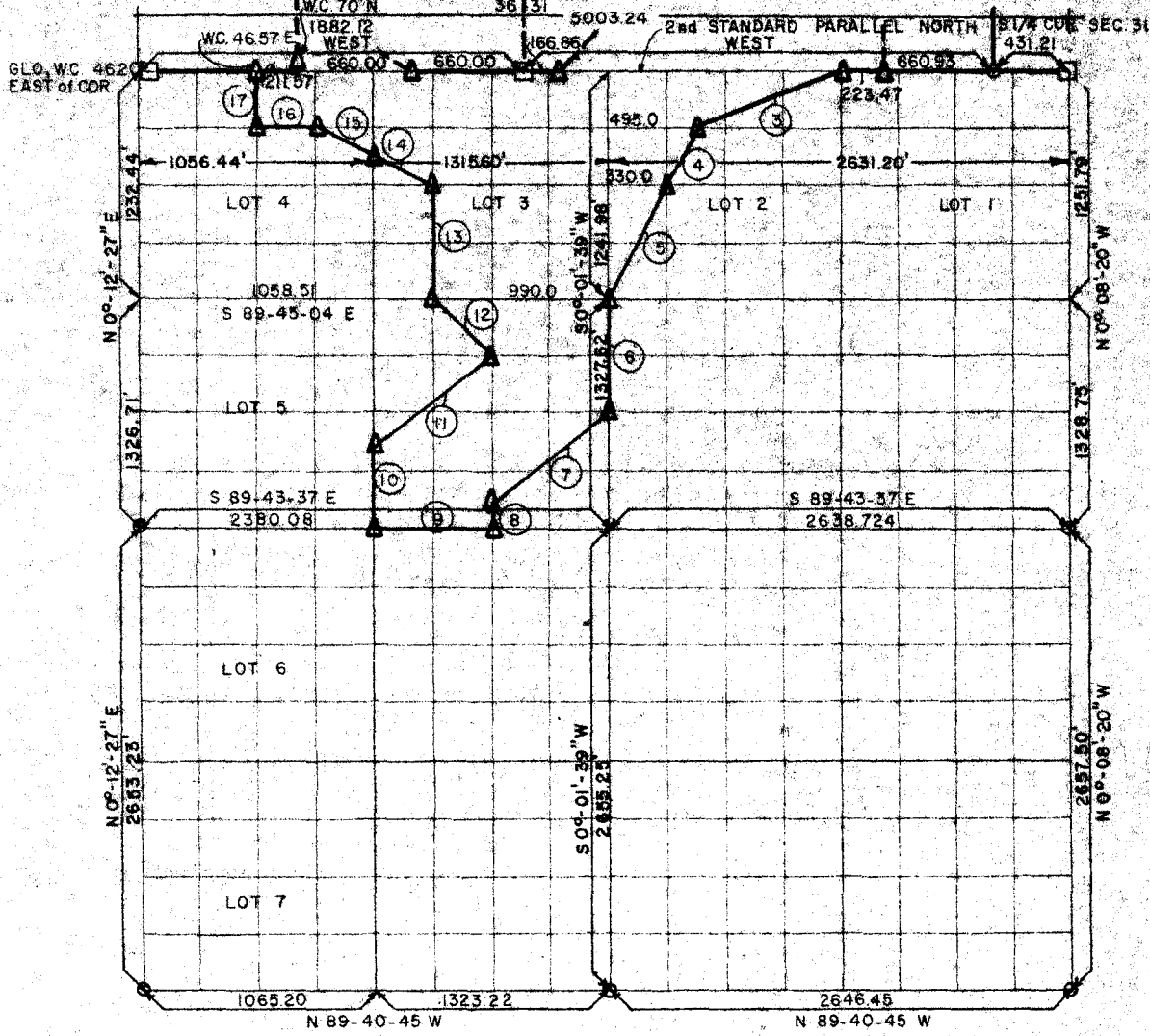


**PARTIAL BOUNDARY SURVEYS
ROBERT S. KERR LOCK AND DAM 15
ARKANSAS RIVER, OKLAHOMA**

Performed Under Contract Number DACW 56-68-C-0100

SEC 6 T-8-N R-22-E COUNTY HASKELL



Course No.	Distance	Bearing	Course No.	Distance	Bearing
1	165.16	N-89-57-37-W	14	366.99	N-63-01-59-W
2	56.31	N-89-57-37-W	15	352.35	N-89-22-10-W
3	970.92	S-70-27-29-W	16	330.00	N-89-52-07-W
4	368.65	S-26-36-56-W	17	287.03	N-00-10-17-E
5	702.64	S-28-02-23-W	18	46.57	S-99-59-11-E
6	667.81	S-00-01-39-W	19	165.00	S-89-59-11-E
7	824.68	S-53-08-06-W			
8	165.917	S-00-04-10-W			
9	659.874	N-89-43-37-W			
10	497.648	N-00-06-40-E			
11	823.10	N-53-17-43-E			
12	471.59	N-44-33-30-W			
13	660.00	N-00-05-40-E		8,480.04	

CERTIFICATE OF SURVEY Field Book No. A-2784 Date June 20, 1968

I HEREBY CERTIFY THAT THE ABOVE PLAT IS A TRUE AND CORRECT REPRESENTATION OF THE SURVEY MADE IN SECTION 6, T-8-N, R-22-E, HASKELL COUNTY, OKLAHOMA.

[Signature]

REGISTERED PROFESSIONAL ENGINEER

ARKANSAS BASIN SURVEYORS, INC.
Under the Supervision of
**U.S. ARMY ENGINEER DISTRICT, TULSA
CORPS OF ENGINEERS**

LEGEND
 Δ MONUMENT
 □ ORIGINAL CORNER
 ○ IRON PIN