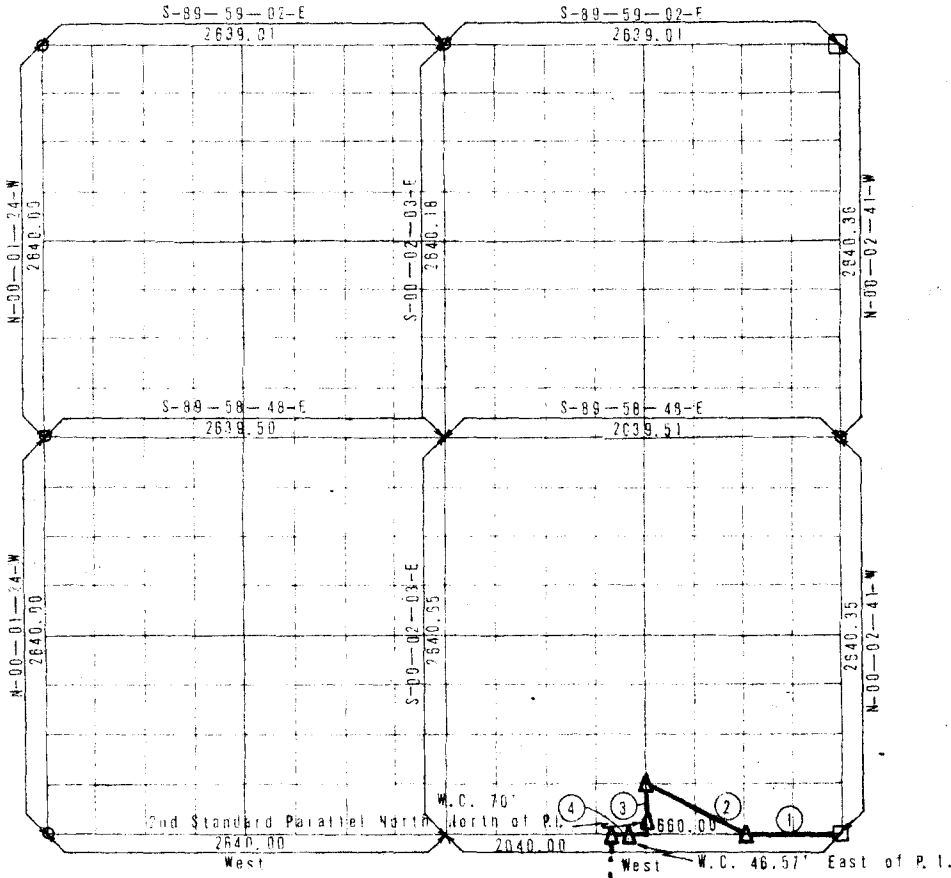


**PARTIAL BOUNDARY SURVEYS  
ROBERT S. KERR LOCK AND DAM 15  
ARKANSAS RIVER, OKLAHOMA**

Performed Under Contract Number DACW 56-68-C-0100

**SEC 36 T -9-N R -21-E COUNTY HASKELL**



Course No.	Distance	Bearing	Course No.	Distance	Bearing
1	860.00	N-89-53-11-W			
2	738.20	N-83-25-39-W			
3	330.06	S-00-02-22-F			
4	211.57	West			
1,929.83					

CERTIFICATE OF SURVEY Field Book No. A-2763 Date June 20, 1968

I HEREBY CERTIFY THAT THE ABOVE PLAT IS A TRUE AND CORRECT REPRESENTATION OF THE SURVEY MADE IN SECTION 36, T-9-N, R-21-E, HASKELL COUNTY, OKLAHOMA.

**ARKANSAS BASIN SURVEYORS, INC.**

Under the Supervision of

**U.S. ARMY ENGINEER DISTRICT, TULSA  
CORPS OF ENGINEERS**

**LEGEND**

- ▲ MONUMENT
- ORIGINAL CORNER
- IRON PIN

REGISTERED PROFESSIONAL ENGINEER