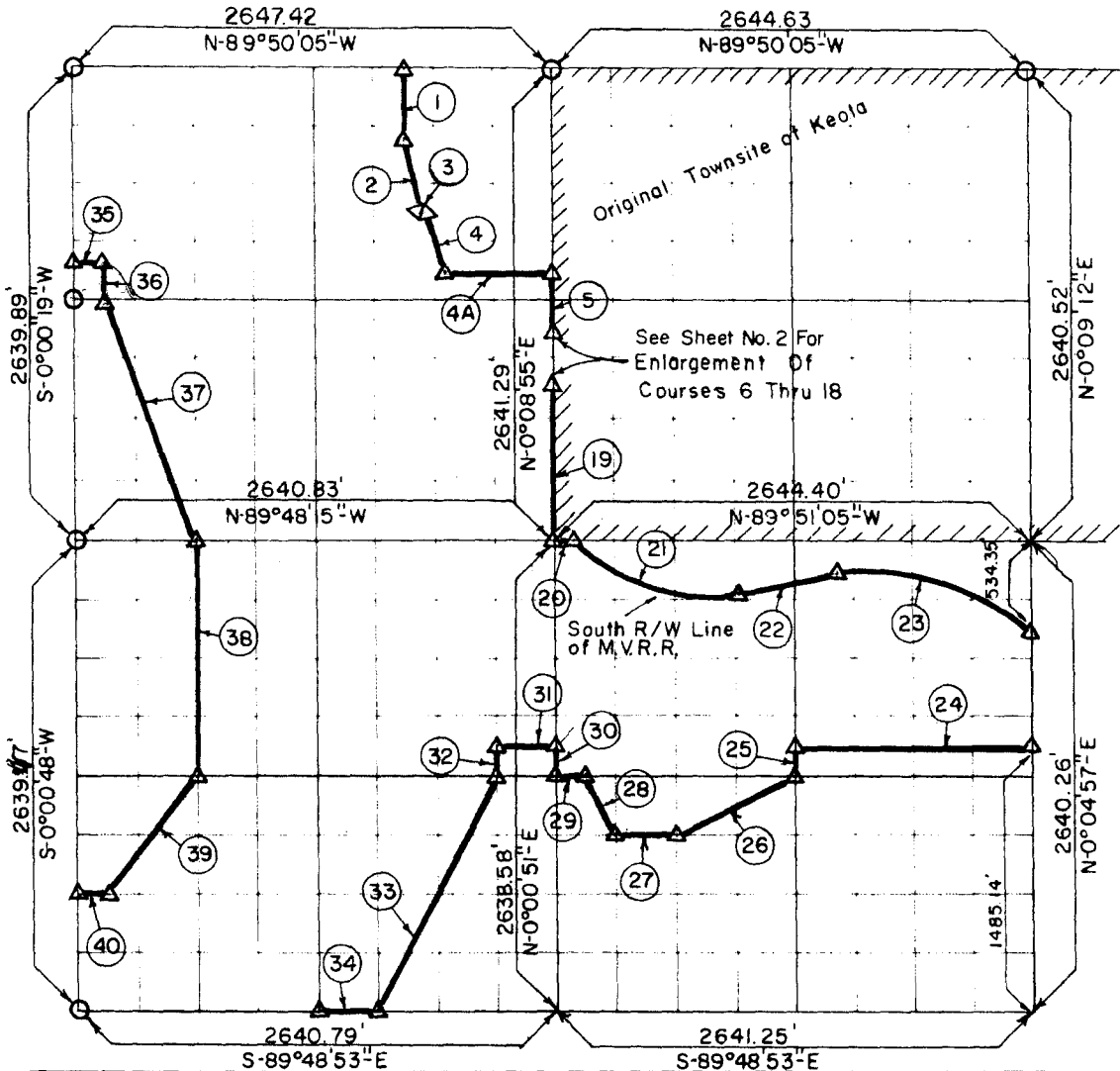


PARTIAL BOUNDARY SURVEYS
 ROBERT S. KERR LOCK AND DAM 15
 ARKANSAS RIVER, OKLAHOMA

Performed Under Contract Number DA-34-066-Civeng 66-214

SEC 13 T-9-N R-22-E COUNTY Haskell



Course No	Distance	Bearing	Course No	Distance	Bearing
1	413.26	S-0°06'14"-W	13	53.85	S-72°32'00"-W
2	425.69	S-15°20'35"-E	14	64.03	S-89°23'30"-W
3	10.00	N-74°39'25"-E	15	58.31	S-81°41'45"-W
4	347.28	S-15°20'35"-E	16	20.00	N-39°16'05"-W
4A	610.90	S-89°49'17"-E	17	75.90	S-50°43'55"-W
5	621.31	S-0°08'55"-W	18	30.00	N-89°51'05"-W
6	30.00	S-89°51'05"-E	19	683.19	S-0°08'55"-W
7	260.83	N-50°43'55"-E	20	35.15	S-89°51'05"-E
8	160.00	S-39°16'05"-E	21	1067.12	ON 1532.69' R. CURVE
9	100.00	N-50°43'55"-E	22	544.39	N-86°40'55"-E
10	172.05	S-74°48'21"-E	23	1115.72	ON 1810.08' R. CURVE
11	350.00	S-50°43'55"-W	24	1321.51	N-89°50'07"-W
12	50.00	N-39°16'05"-W	25	164.96	S-0°02'54"-W

Field Book No. A-2408 Date: 3-31-66

CERTIFICATE OF SURVEY

I HEREBY CERTIFY THAT THE ABOVE PLAT IS A TRUE AND CORRECT REPRESENTATION OF THE SURVEY MADE IN SECTION 13, T-9-N, R-22-E, Haskell COUNTY, OKLAHOMA.

BREISCH ENGINEERING COMPANY

Under the Supervision of

U.S. ARMY ENGINEER DISTRICT, TULSA
 CORPS OF ENGINEERS

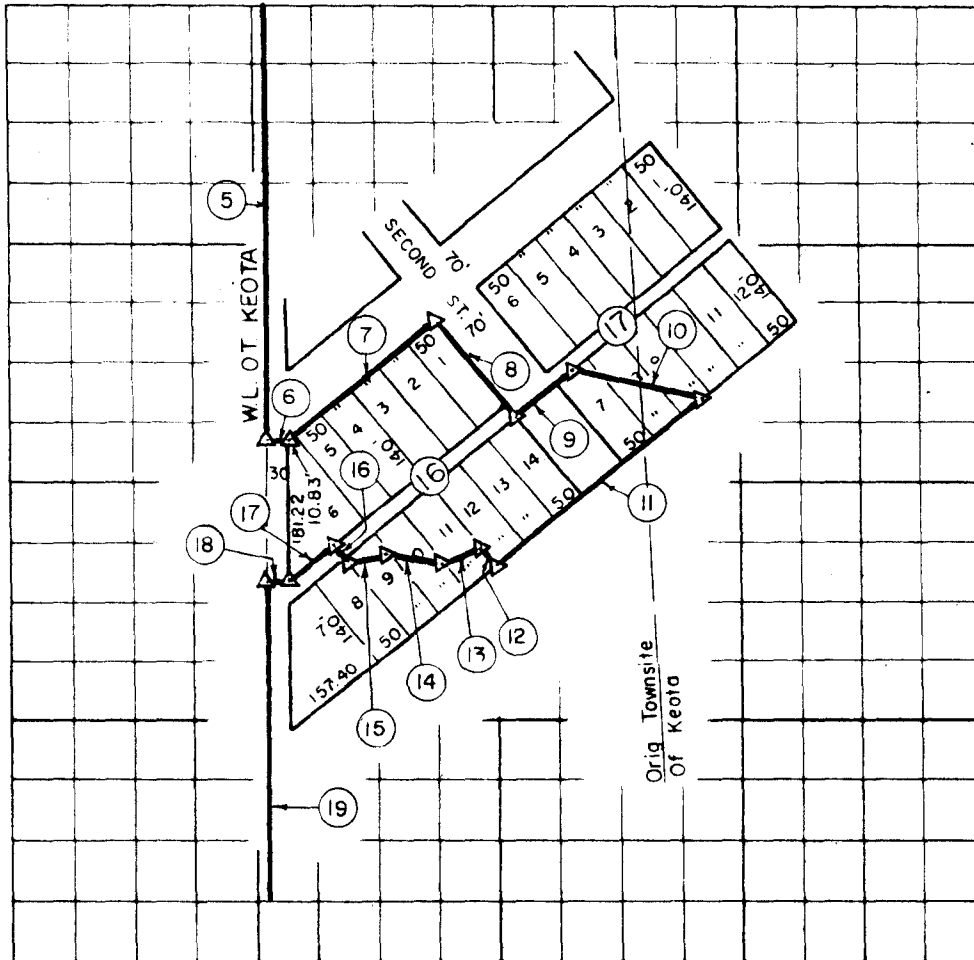
LEGEND

- ▲ MONUMENT
- ORIGINAL CORNER
- IRON PIN

**PARTIAL BOUNDARY SURVEYS
ROBERT S. KERR LOCK AND DAM 15
ARKANSAS RIVER, OKLAHOMA**

Performed Under Contract Number DA-34-066-Civeng 66-214

SEC 13 T-9-N R-22-E COUNTY Haskell



Course No.	Distance	Bearing	Course No.	Distance	Bearing
26	737.78	S-63°36'30" W	39	823.68	S-36°57'56" W
27	330.30	N-89°49'44" W	40	165.05	N-89°48'43" W
28	369.27	N-26°32'55" W			
29	165.18	N-89°49'59" W			
30	164.91	N-0°00'51" E			
31	330.10	N-89°48'31" W			
32	164.92	S-0°00'51" W			
33	1473.52	S-26°37'55" W			
34	330.10	N-89°48'53" W			
35	165.04	S-89°46'43" E			
36	209.85	S-0°00'51" W			
37	1411.37	S-20°32'05" E			
38	1319.47	S-0°00'49" W			

Field Book No. A-2408 Date: 3-31-66

CERTIFICATE OF SURVEY

I HEREBY CERTIFY THAT THE ABOVE PLAT IS A TRUE AND CORRECT REPRESENTATION OF THE SURVEY MADE IN SECTION 13, T-9-N, R-22-E, Haskell COUNTY, OKLAHOMA.

BREISCH ENGINEERING COMPANY
Under the Supervision of
U.S. ARMY ENGINEER DISTRICT, TULSA
CORPS OF ENGINEERS

LEGEND

- △ MONUMENT
- ORIGINAL CORNER
- IRON PIN

REGISTERED PROFESSIONAL ENGINEER