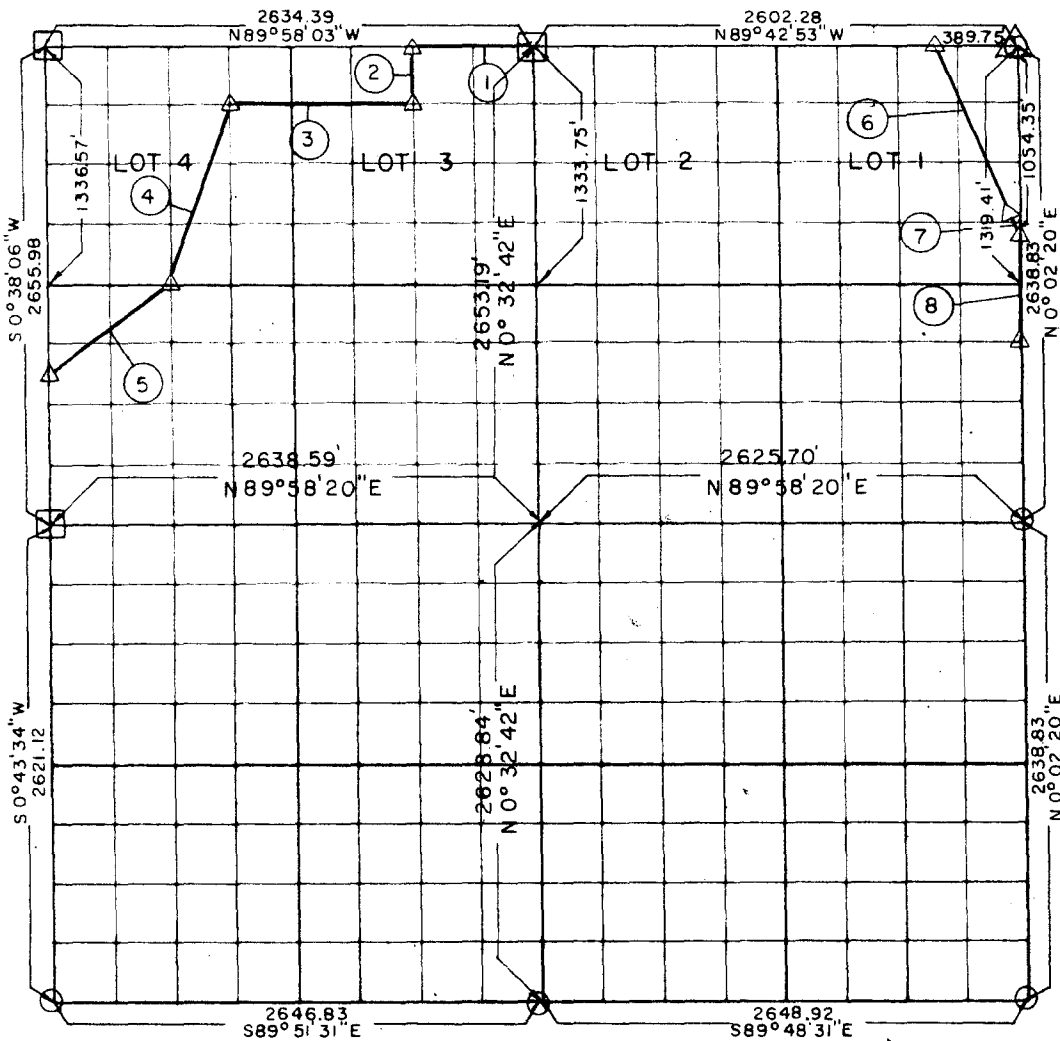


**PARTIAL BOUNDARY SURVEYS
ROBERT S. KERR LOCK AND DAM 15
ARKANSAS RIVER, OKLAHOMA**

Performed Under Contract Number DA-34-066-Civeng 66-214

SEC 1 T -9-N R -22-E COUNTY HASKELL



Course No.	Distance	Bearing	Course No.	Distance	Bearing
1	658.60	N89°58'03"W			
2	344.89	S 0°34'03"W			
3	988.73	S89°58'16"W			
4	1046.23	S18°55'29"W			
5	828.76	S53°19'00"W			
6	1049.59	S20°22'00"E			
7	76.14	ON 994.93' R. CURVE			
8	594.92	S 0°02'20"W			

CERTIFICATE OF SURVEY Field Book No. A-2402 Date: 3-31-66

HEREBY CERTIFY THAT THE ABOVE PLAT IS A TRUE AND CORRECT REPRESENTATION OF THE SURVEY MADE IN SECTION 1, T. 9 N. R. 22 E., HASKELL COUNTY, OKLAHOMA.

[Signature]
REGISTERED PROFESSIONAL ENGINEER

BREISCH ENGINEERING COMPANY
Under the Supervision of
**U.S. ARMY ENGINEER DISTRICT, TULSA
CORPS OF ENGINEERS**

LEGEND
 Δ MONUMENT
 □ ORIGINAL CORNER
 ○ IRON PIN
 △ GLO-PIPE & CAP