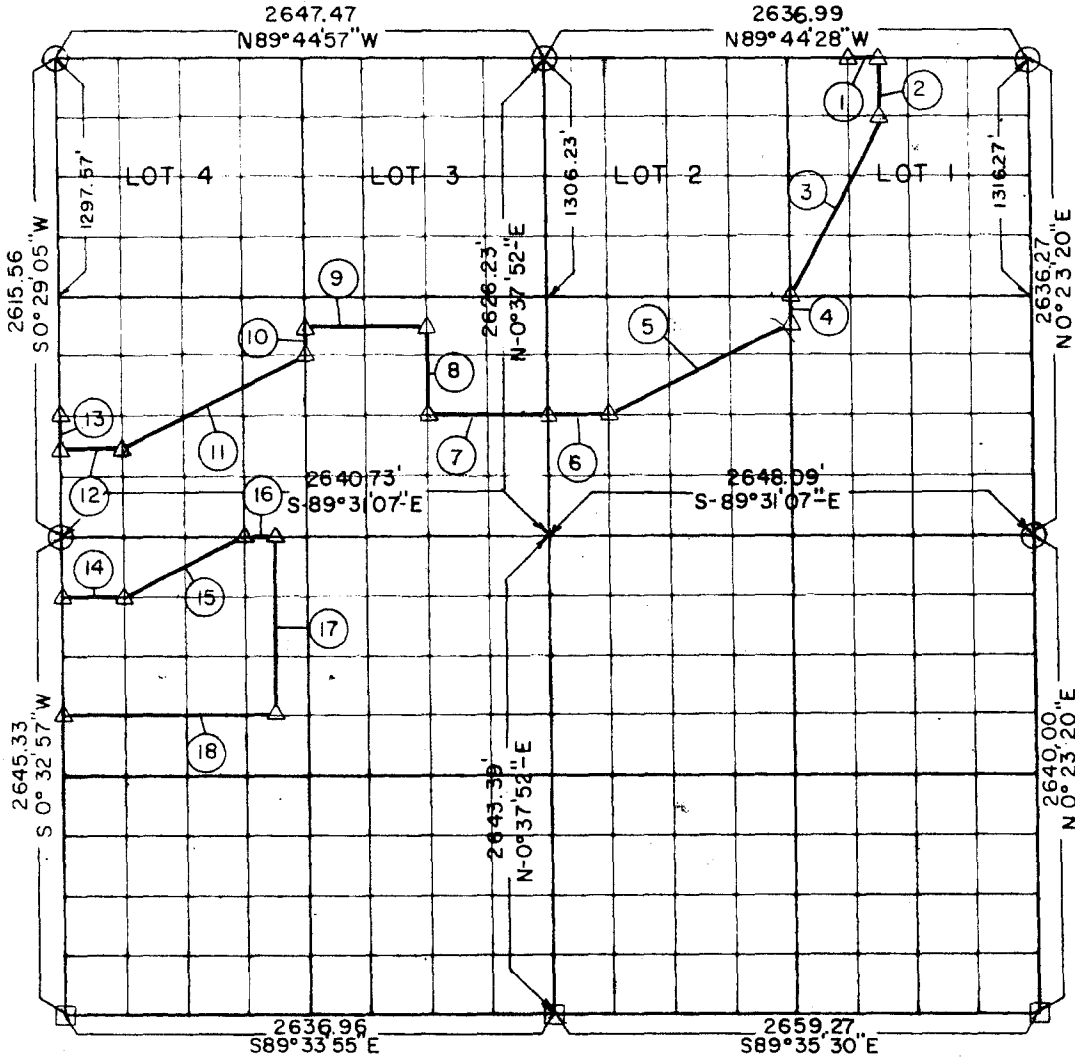


**PARTIAL BOL' JARY SURVEYS
ROBERT S. KERR LOCK AND DAM 15
ARKANSAS RIVER, OKLAHOMA**

Performed Under Contract Number DA-34-066-Civeng 66-214

SEC 3 T-9-N R-22-E COUNTY HASKELL



Course No.	Distance	Bearing	Course No.	Distance	Bearing
1	164.81	S 89°44'28\"E	14	330.03	S 89°31'21\"E
2	323.28	S 0°27'51\"W	15	738.77	N 63°53'33\"E
3	1106.93	S 27°03'16\"W	16	165.05	S 89°31'15\"E
4	165.01	S 0°30'35\"W	17	991.73	S 0°35'06\"W
5	1108.85	S 63°58'06\"W	18	1154.70	N 89°32'08\"W
6	330.66	N 89°31'00\"W			
7	660.61	N 89°31'07\"W			
8	495.00	N 0°35'40\"E			
9	660.92	N 89°31'07\"W			
10	165.00	S 0°33'29\"W			
11	1108.11	S 63°56'57\"W			
12	330.25	S 89°31'07\"W			
13	165.00	N 0°29'05\"E			

CERTIFICATE OF SURVEY Field Book No. A-2404 Date: 3-31-66

HEREBY CERTIFY THAT THE ABOVE PLAT IS A TRUE AND CORRECT REPRESENTATION OF THE SURVEY MADE IN SECTION 3, T 9 N, R 22 E, HASKELL COUNTY, OKLAHOMA.

BREISCH ENGINEERING COMPANY

Under the Supervision of

**U.S. ARMY ENGINEER DISTRICT, TULSA
CORPS OF ENGINEERS**

LEGEND

- Δ MONUMENT
- ORIGINAL CORNER
- IRON PIN

[Signature]
REGISTERED PROFESSIONAL ENGINEER