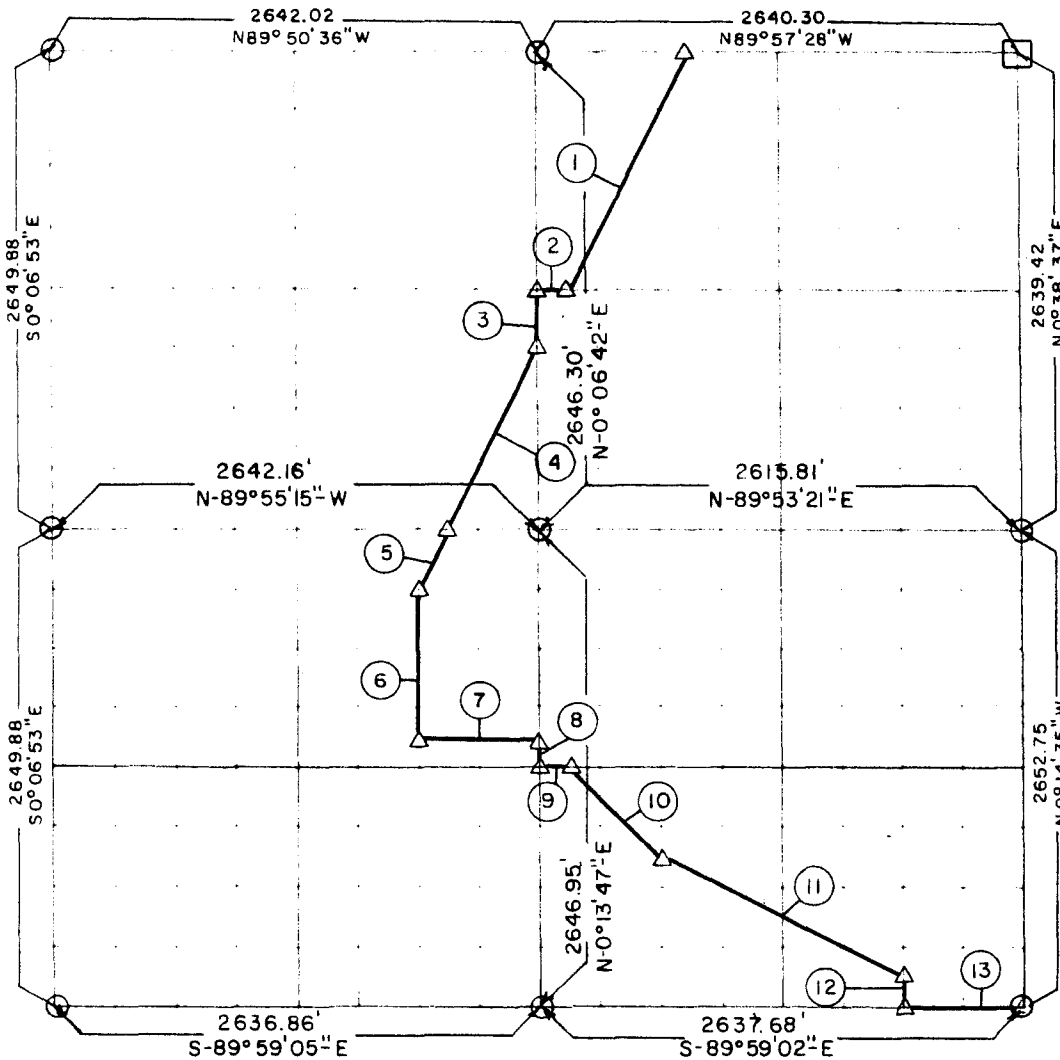


PARTIAL BOUNDARY SURVEYS  
 ROBERT S. KERR LOCK AND DAM 15  
 ARKANSAS RIVER, OKLAHOMA

Performed Under Contract Number DA-34-066-Civeng 66-214

SEC 9 T -9-N R -22-E COUNTY HASKELL



Course No.	Distance	Bearing	Course No.	Distance	Bearing
1	1479.52	S 26° 38' 29" W			
2	164.25	S 89° 58' 07" W			
3	330.79	S 0° 06' 42" W			
4	1109.40	S 26° 38' 05" W			
5	370.18	S 26° 41' 38" W			
6	827.41	S 0° 12' 03" W			
7	659.96	S 89° 56' 59" E			
8	165.43	S 0° 13' 47" W			
9	164.17	N 89° 57' 17" E			
10	698.43	S 44° 43' 56" E			
11	1474.03	S 63° 18' 04" E			
12	165.70	S 0° 07' 33" E			
13	659.42	S 89° 59' 04" E			

CERTIFICATE OF SURVEY

Field Book No. A-2405

Date 3-31-66

HEREBY CERTIFY THAT THE ABOVE PLAT IS A TRUE AND CORRECT REPRESENTATION OF THE SURVEY MADE IN SECTION 9, T-9-N, R-22-E, HASKELL COUNTY, OKLAHOMA.

BREISCH ENGINEERING COMPANY

Under the Supervision of

U.S. ARMY ENGINEER DISTRICT, TULSA  
 CORPS OF ENGINEERS

LEGEND

- △ MONUMENT
- ORIGINAL CORNER
- IRON PIN

REGISTERED PROFESSIONAL ENGINEER