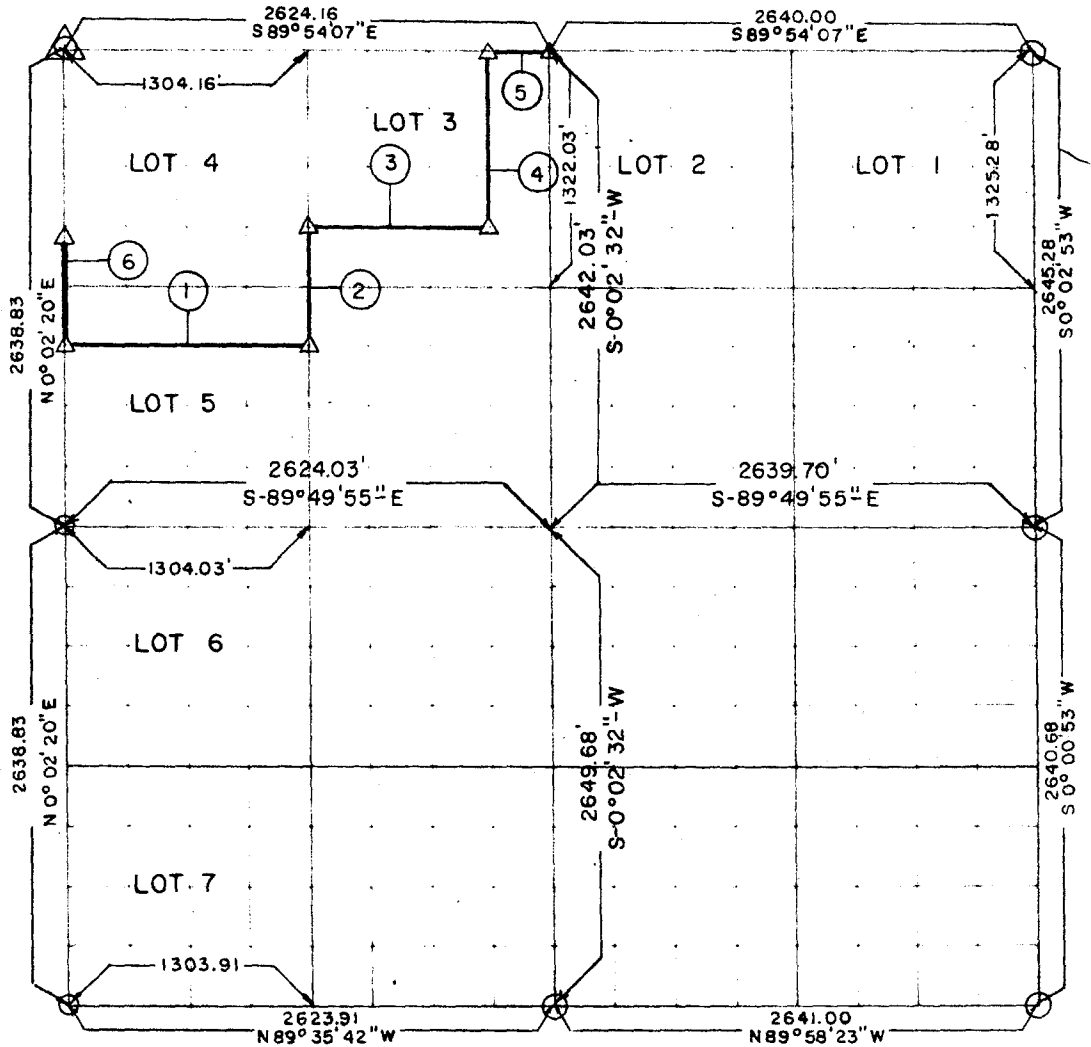


PARTIAL BOUNDARY SURVEYS
 ROBERT S. KERR LOCK AND DAM 15
 ARKANSAS RIVER, OKLAHOMA

Performed Under Contract Number DA-34-066-Civeng 66-214

SEC 6 T-9-N R-23-E COUNTY HASKELL



Course No	Distance	Bearing	Course No	Distance	Bearing
1	1304.09	S 89° 50' 29" E			
2	659.86	S 0° 02' 32" E			
3	990.00	S 89° 50' 54" E			
4	991.71	N 0° 02' 32" E			
5	330.00	S 89° 54' 07" E			
6	594.92	S 0° 02' 20" W			
4,870.58 ✓					

CERTIFICATE OF SURVEY Field Book No A-2414 Date 3-31-66

HEREBY CERTIFY THAT THE ABOVE PLAT IS A TRUE AND CORRECT REPRESENTATION OF THE SURVEY MADE IN SECTION 6, T-9-N, R-23-E, HASKELL COUNTY, OKLAHOMA.

BREISCH ENGINEERING COMPANY
 Under the Supervision of
 U.S. ARMY ENGINEER DISTRICT, TULSA
 CORPS OF ENGINEERS

LEGEND
 Δ MONUMENT
 □ ORIGINAL CORNER
 ○ IRON PIN
 ▲ GLO. PIPE & CAP