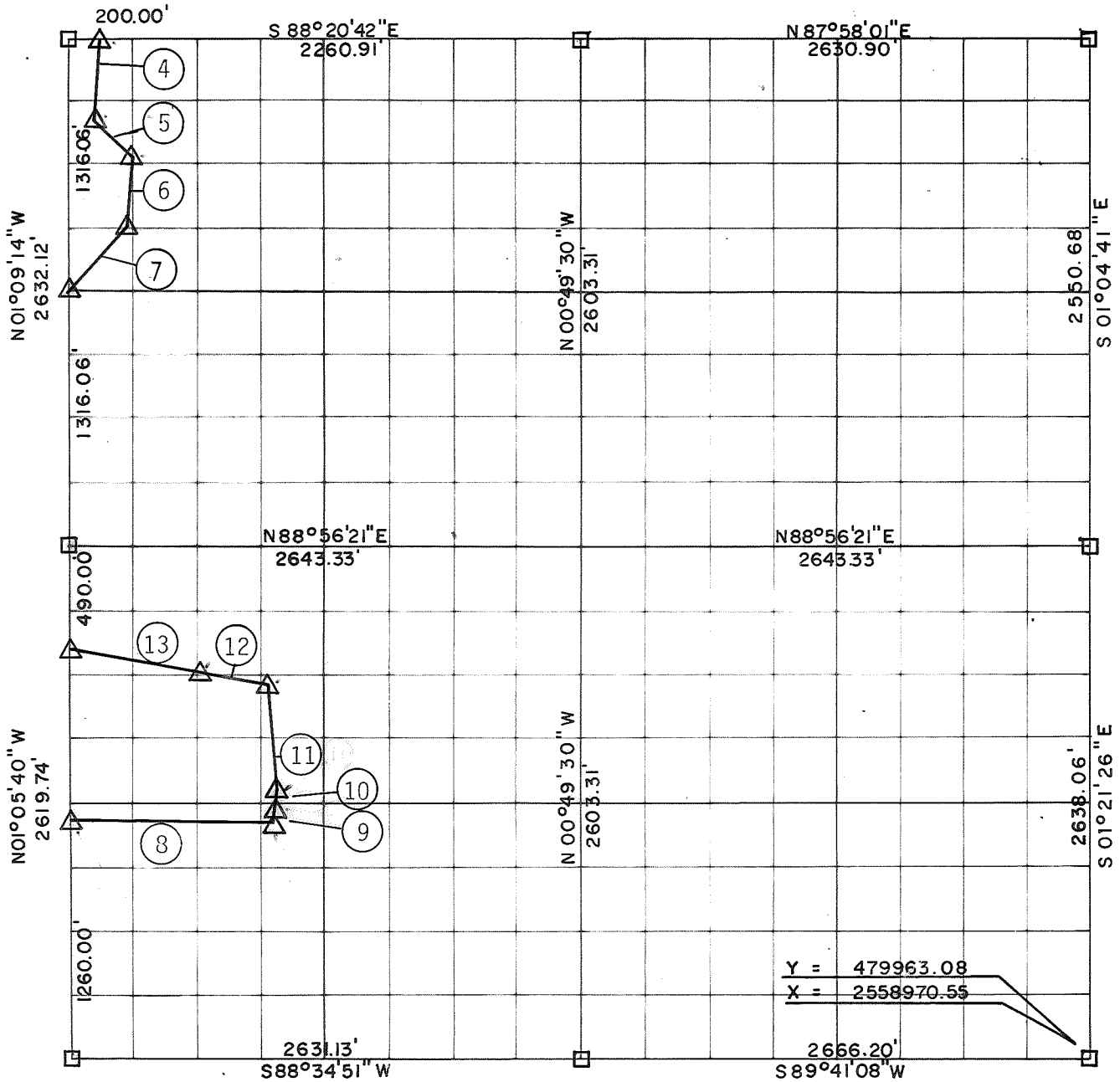


**PARTIAL BOUNDARY SURVEYS
SKIATOOK LAKE
HOMINY CREEK, OKLAHOMA**

Performed Under Contract Number DACW 56-81-C-0103

SEC 10 T-21-N R-11-E COUNTY OSAGE



Course No.	Distance	Bearing	Course No.	Distance	Bearing
4	493.62'	S01°51'02"W			
5	230.49'	S49°23'55"E			
6	431.86'	S05°18'52"W			
7	376.20'	S51°01'00"W			
8	1070.15'	S89°01'59"E			
9	95.06'	N15°25'20"E			
10	55.36'	N15°25'20"E			
11	574.91'	N15°07'26"W			
12	250.00'	N79°07'27"W			
13	744.36'	N79°09'05"W			

CERTIFICATE OF SURVEY Field Book No. 13-222 Date November, 1981

I HEREBY CERTIFY THAT THE ABOVE PLAT IS A TRUE AND CORRECT REPRESENTATION OF THE SURVEY MADE IN SECTION 10, T 21 N, R 11 E, OSAGE COUNTY, OKLAHOMA.



BREISCH ENGINEERING CO. INC.

Under the Supervision of

U.S. ARMY ENGINEER DISTRICT, TULSA
CORPS OF ENGINEERS

LEGEND

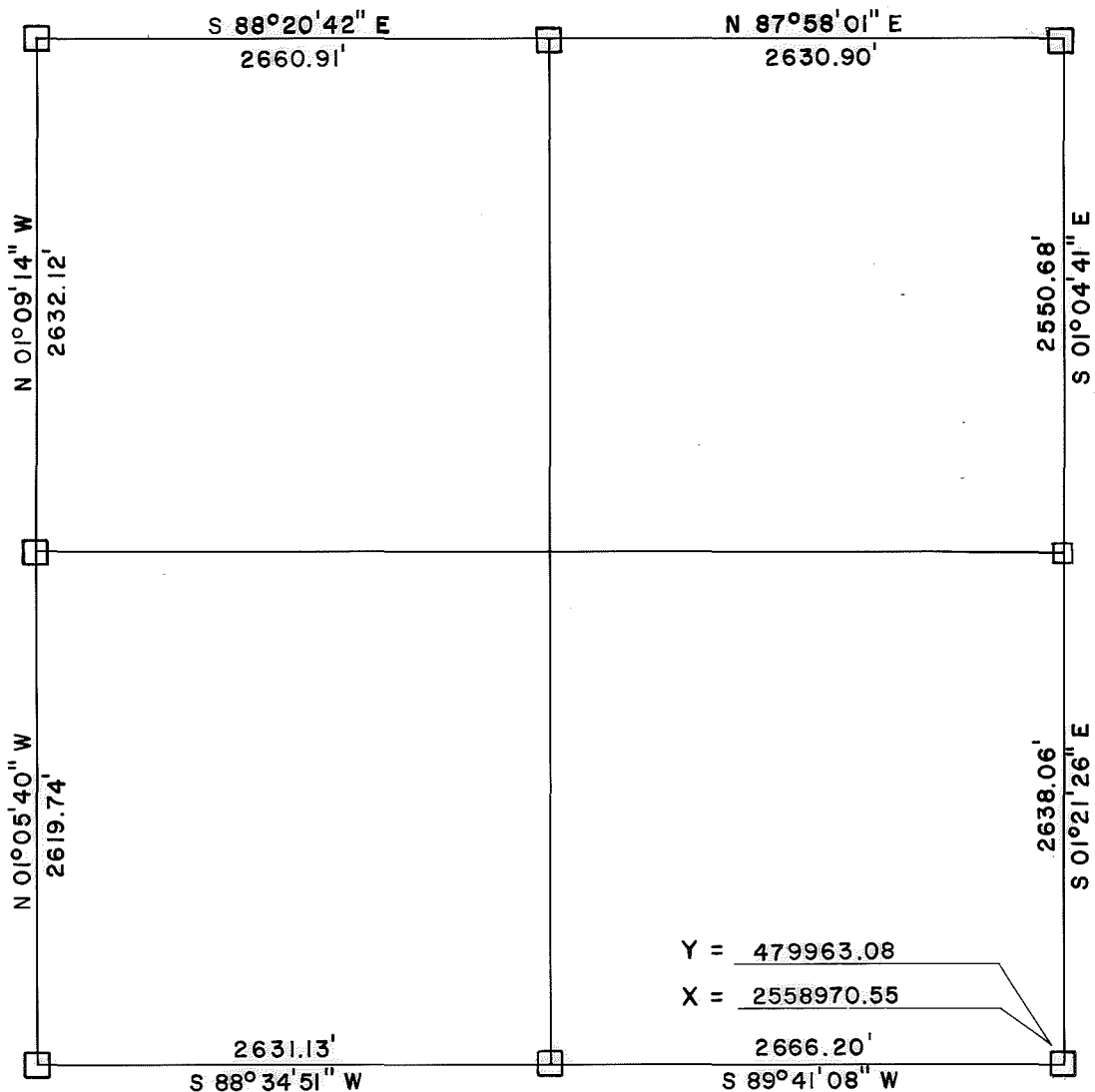
- △ MONUMENT
- ORIGINAL CORNER
- IRON PIN

REGISTERED LAND SURVEYOR

SKIATOOK LAKE AREA HOMINY CREEK, OKLAHOMA SECTION AND QUARTER SECTION CORNER SURVEY

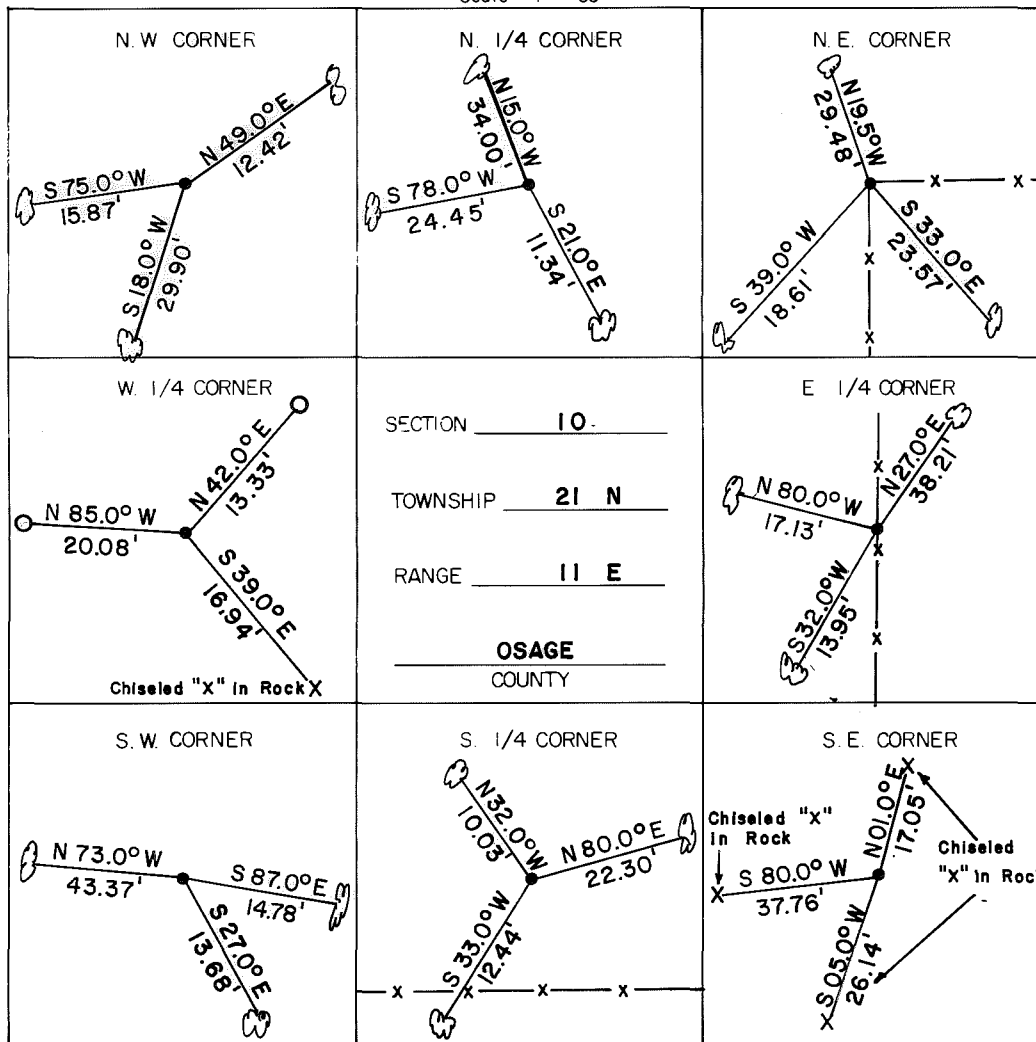
Performed Under Contract Number DACW 56-74-C-0098

★ GRID.



REFERENCES

Scale: 1" = 50'



LEGEND

- △ Monument
- Original Corner
- Iron Pin Set
- Iron Pin Found
- Tele. Pole
- Power Pole
- ⊗ Fence Post
- Hwy. R/W Marker
- Reference Marker
- Tree

NOTE: Ties are to nail and washer unless otherwise noted.



Certificate of Survey

I hereby certify that the above plot is a true and correct representation of the survey of the above section.

George E. Gilmore
REGISTERED LAND SURVEYOR L.S. # 251

Field Book No. 13-222



Under the Supervision of
US. ARMY ENGINEER
TULSA DISTRICT
CORP OF ENGINEERS

DATE: JULY, 1974