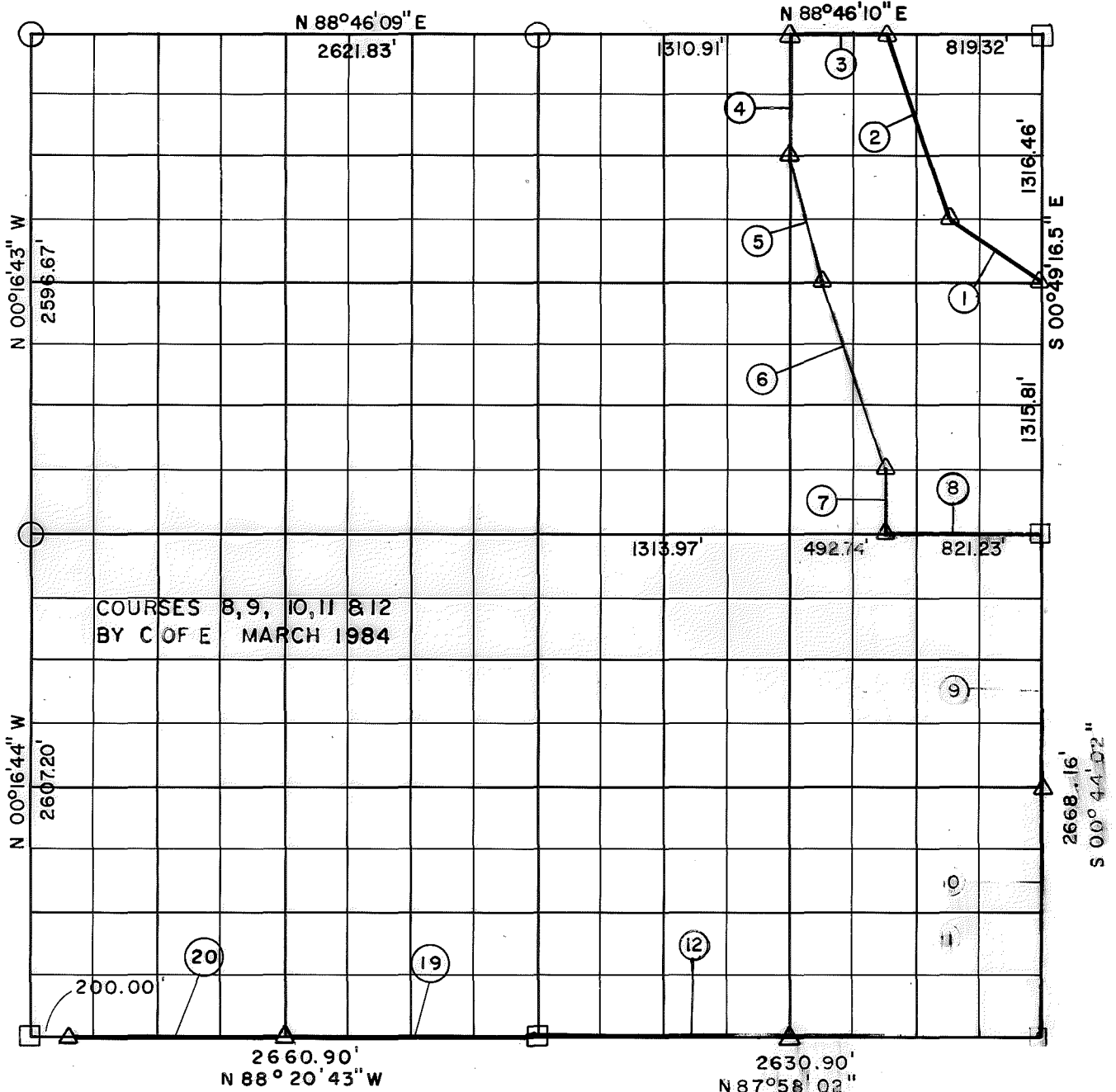


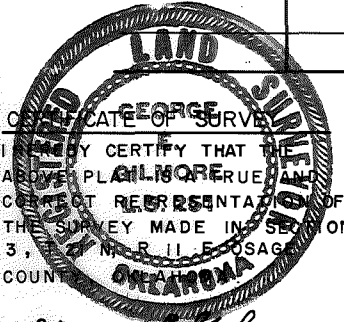
RECORD BOUNDARY PLAT

SKIATOOK LAKE
HOMINY CREEK, OKLAHOMA

SEC. 3 T 21 N R 11 E COUNTY OSAGE



Course No.	Distance	Bearing	Course No.	Distance	Bearing
1	590.95'	N 57°11'12" W	12	1315.45'	S 87°58'02" E
2	1036.33'	N 19°13'52" W			
3	491.59'	S 88°46'10" W			
4	655.18'	S 00°45'13" E			
5	674.83'	S 14°49'24" E			
6	1037.71'	S 19°12'41" E	* 19	1330.45'	N 88°20'43" W
7	328.51'	S 00°46'45" E	* 20	1130.65'	N 88°20'43" W
8	821.23'	N 89°09'35" E			
9	1334.08'	S 00°44'02" E			
10	1334.08'	S 00°44'02" E			
11	1315.45'	S 87°58'02" E			



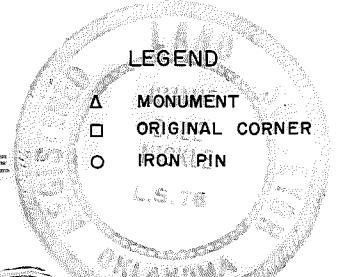
Field Book No. 13-202 Date August 1974
13-218

U.S. ARMY ENGINEER DISTRICT, TULSA
CORPS OF ENGINEERS

* COURSES 19 & 20 by CRAIG & KEITHLINE

MAY, 1981 - BOOK 13-218

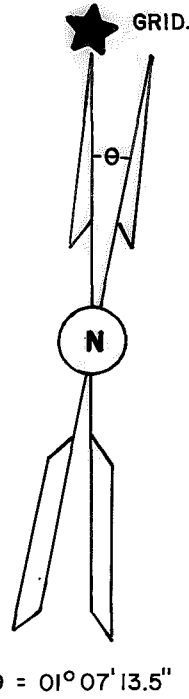
Jimie Dale Nickle
Jimie Dale Nickle
L.S. No. 78



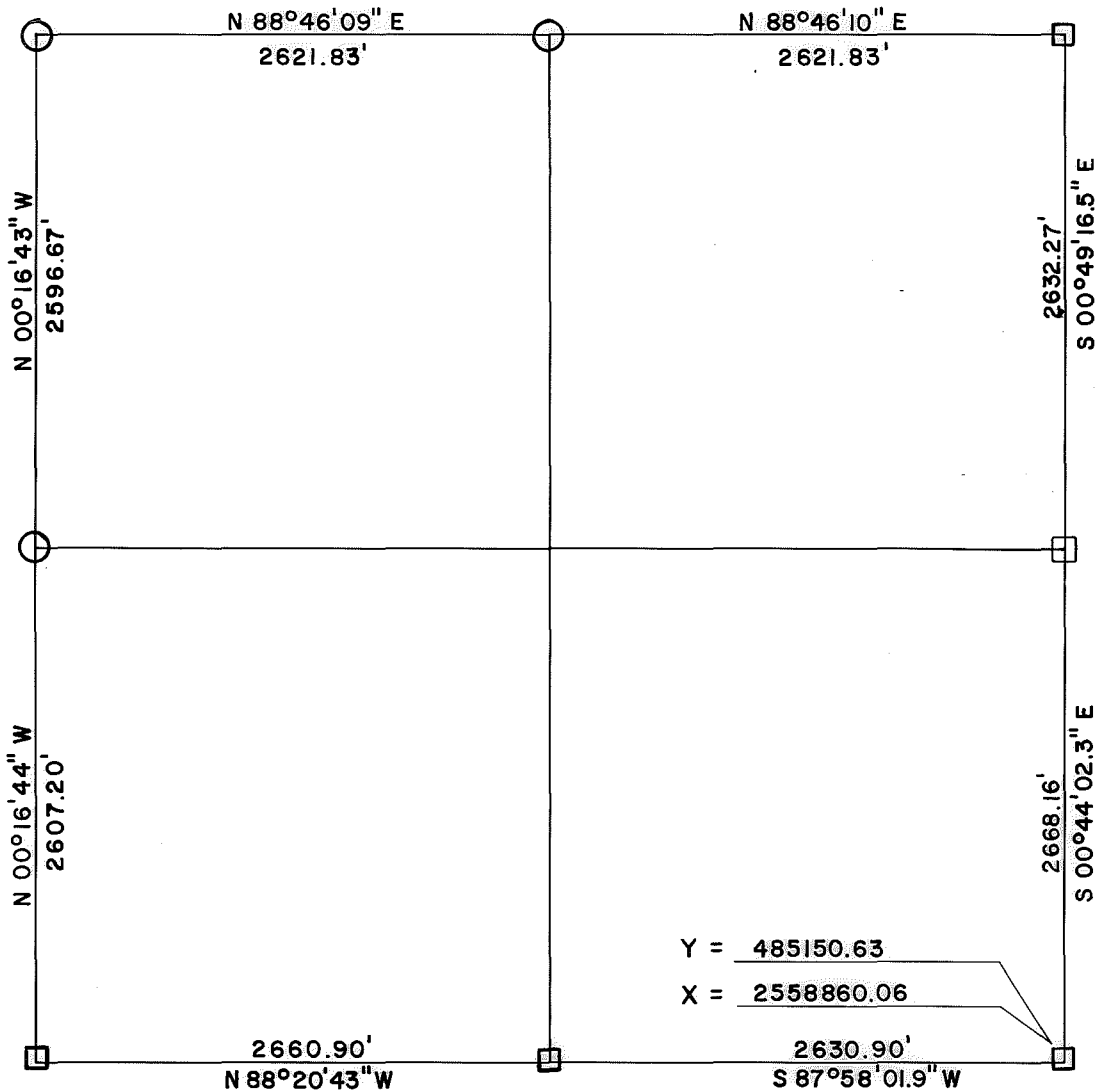
George E. Gilmore
G. E. GILMORE L.S. 251

SKIATOOK LAKE AREA HOMINY CREEK, OKLAHOMA SECTION AND QUARTER SECTION CORNER SURVEY

Performed Under Contract Number DACW 56-74-C-0098



$\theta = 01^{\circ}07'13.5''$



REFERENCES

Scale: 1" = 50'

<p>N. W. CORNER</p>	<p>N. 1/4 CORNER</p>	<p>N. E. CORNER</p>
<p>W. 1/4 CORNER</p>	<p>SECTION <u>3</u></p> <p>TOWNSHIP <u>21 N</u></p> <p>RANGE <u>11 E</u></p> <p>OSAGE</p> <p>COUNTY</p>	<p>E. 1/4 CORNER</p>
<p>S. W. CORNER</p>	<p>S. 1/4 CORNER</p>	<p>S. E. CORNER</p>

LEGEND

- Monument
- Original Corner
- Iron Pin Set
- Iron Pin Found
- Tele. Pole
- Power Pole
- Fence Post
- Hwy. R/W Marker
- Reference Marker
- Tree

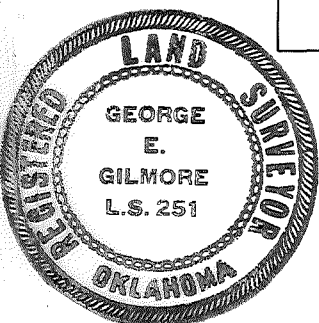
NOTE: Ties are to nail and washer unless otherwise noted.

Certificate of Survey

I hereby certify that the above plat is a true and correct representation of the survey of the above section.

Field Book No. 13-202

Under the Supervision of
US. ARMY ENGINEER
TULSA DISTRICT
CORP OF ENGINEERS



George E. Gilmore
REGISTERED LAND SURVEYOR L.S. # 251

DATE: JULY, 1974