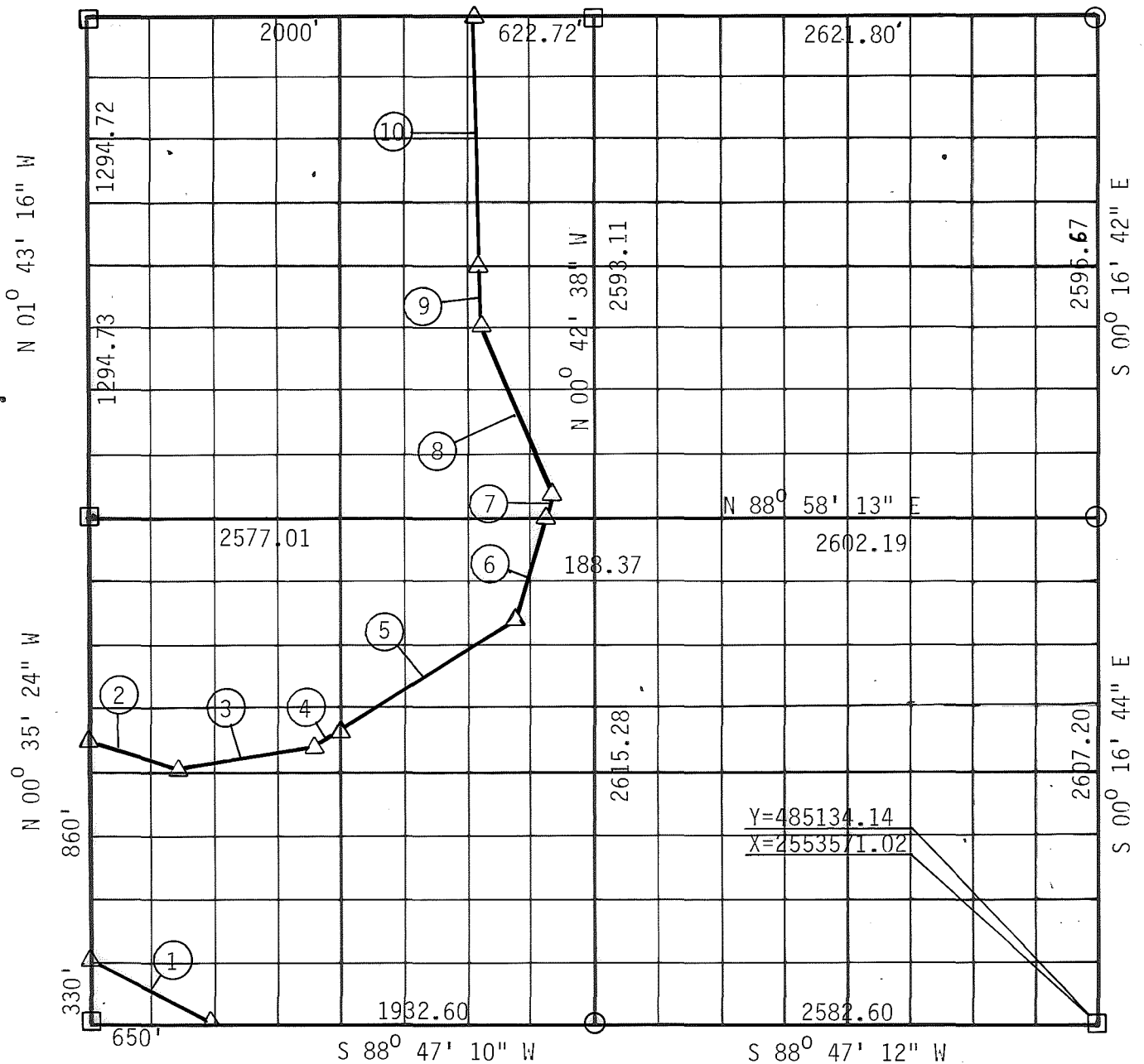


PARTIAL BOUNDARY SURVEYS  
 SKIATOOK LAKE  
 HOMINY CREEK, OKLAHOMA

Performed Under Contract Number DACW 56-81-C-0103

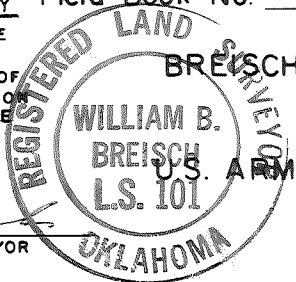
SEC 4 T 21 N R 11 E COUNTY OSAGE  
 N 88° 53' 13" E N 88° 53' 46" E



Course No.	Distance	Bearing	Course No.	Distance	Bearing
1	725.62	N 64° 10' 00" W			
2	528.38	S 70° 41' 42" E			
3	711.07	N 79° 52' 31" E			
4	109.86	N 55° 50' 50" E			
5	1202.35	N 55° 50' 50" E			
6	552.43	N 19° 22' 11" E			
7	125.97	N 19° 22' 11" E			
8	937.76	N 21° 54' 54" W			
9	302.93	N 5° 41' 10" W			
10	1300.24	N 5° 41' 10" W			

CERTIFICATE OF SURVEY Field Book No. 13-218 Date NOVEMBER 1981

I HEREBY CERTIFY THAT THE ABOVE PLAT IS A TRUE AND CORRECT REPRESENTATION OF THE SURVEY MADE IN SECTION 4 T21 N, R11 E, OSAGE COUNTY OKLAHOMA



BREISCH ENGINEERING CO. INC.

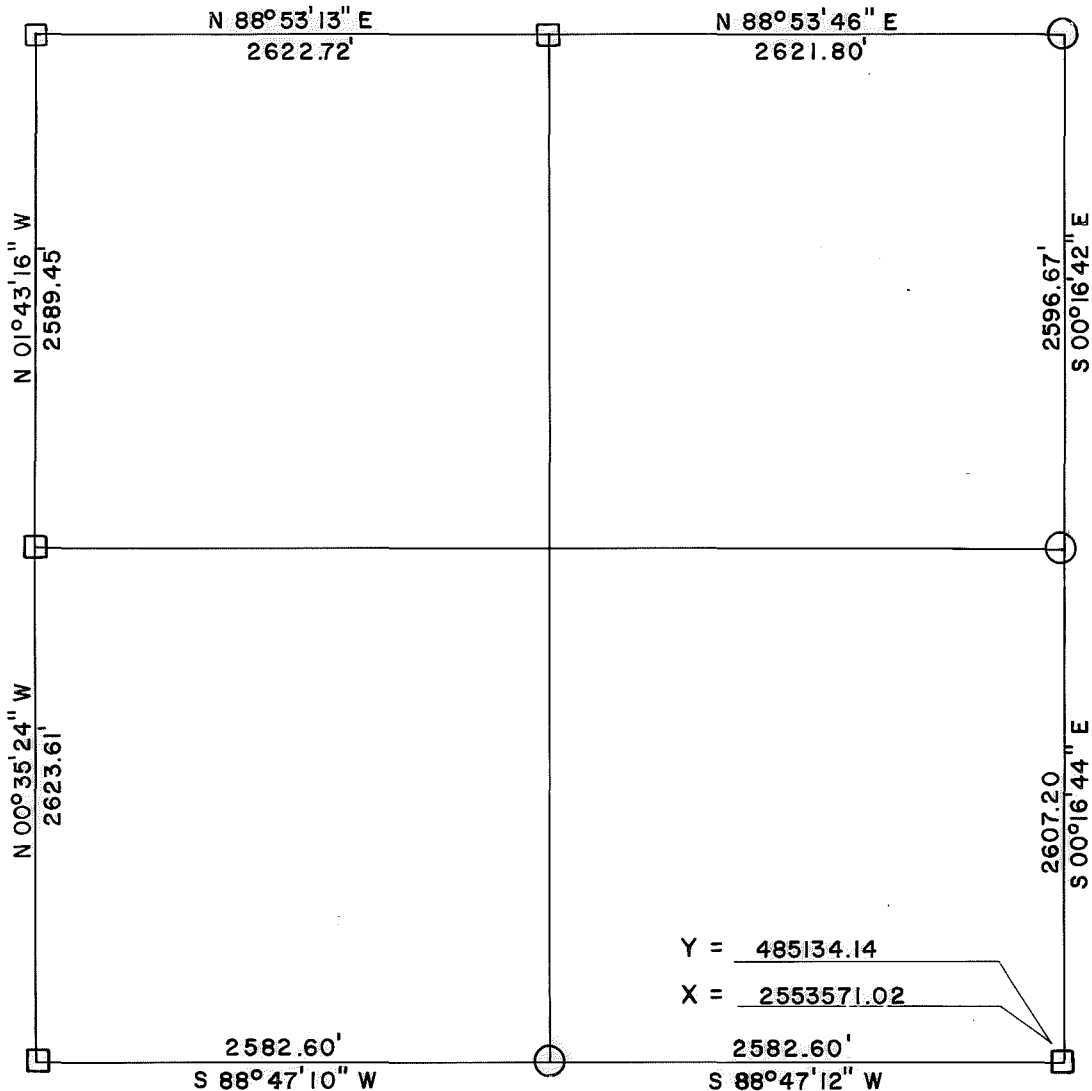
Under the Supervision of  
 U.S. ARMY ENGINEER DISTRICT, TULSA  
 CORPS OF ENGINEERS

LEGEND  
 ▲ MONUMENT  
 □ ORIGINAL CORNER  
 ○ IRON PIN

*W B Breisch*  
 REGISTERED LAND SURVEYOR

# SKIATOOK LAKE AREA HOMINY CREEK, OKLAHOMA SECTION AND QUARTER SECTION CORNER SURVEY

Performed Under Contract Number DACW 56-74-C-0098



$\theta = 01^{\circ} 06' 32.2''$

Y = 485134.14  
X = 2553571.02

### REFERENCES

Scale: 1" = 50'

<p>N. W. CORNER</p>	<p>N. 1/4 CORNER</p> <p style="text-align: center;">IN LAKE</p>	<p>N. E. CORNER</p>
<p>W 1/4 CORNER</p> <p>CHISLED "X" IN ROCKS</p> <p>X CHISLED "X" IN ROCK</p>	<p>SECTION _____ 4 _____</p> <p>TOWNSHIP _____ 21 N _____</p> <p>RANGE _____ 11 E _____</p> <p>OSAGE COUNTY</p>	<p>E 1/4 CORNER</p>
<p>S. W. CORNER</p>	<p>S. 1/4 CORNER</p> <p>IRON PIN FOUND</p>	<p>S. E. CORNER</p>

#### LEGEND

- Monument
- Original Corner
- Iron Pin Set
- Iron Pin Found
- Tele. Pole
- Power Pole
- Fence Post
- Hwy. R/W Marker
- Reference Marker
- Tree

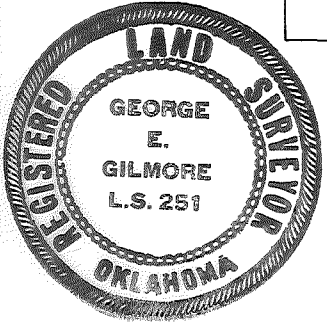
NOTE: Ties are to nail and washer unless otherwise noted.

#### Certificate of Survey

I hereby certify that the above plot is a true and correct representation of the survey of the above section.

Field Book No. 13-218

Under the Supervision of  
U.S. ARMY ENGINEER  
TULSA DISTRICT  
CORP OF ENGINEERS



*George E. Gilmore*  
REGISTERED LAND SURVEYOR L.S. # 251

DATE: JULY, 1974