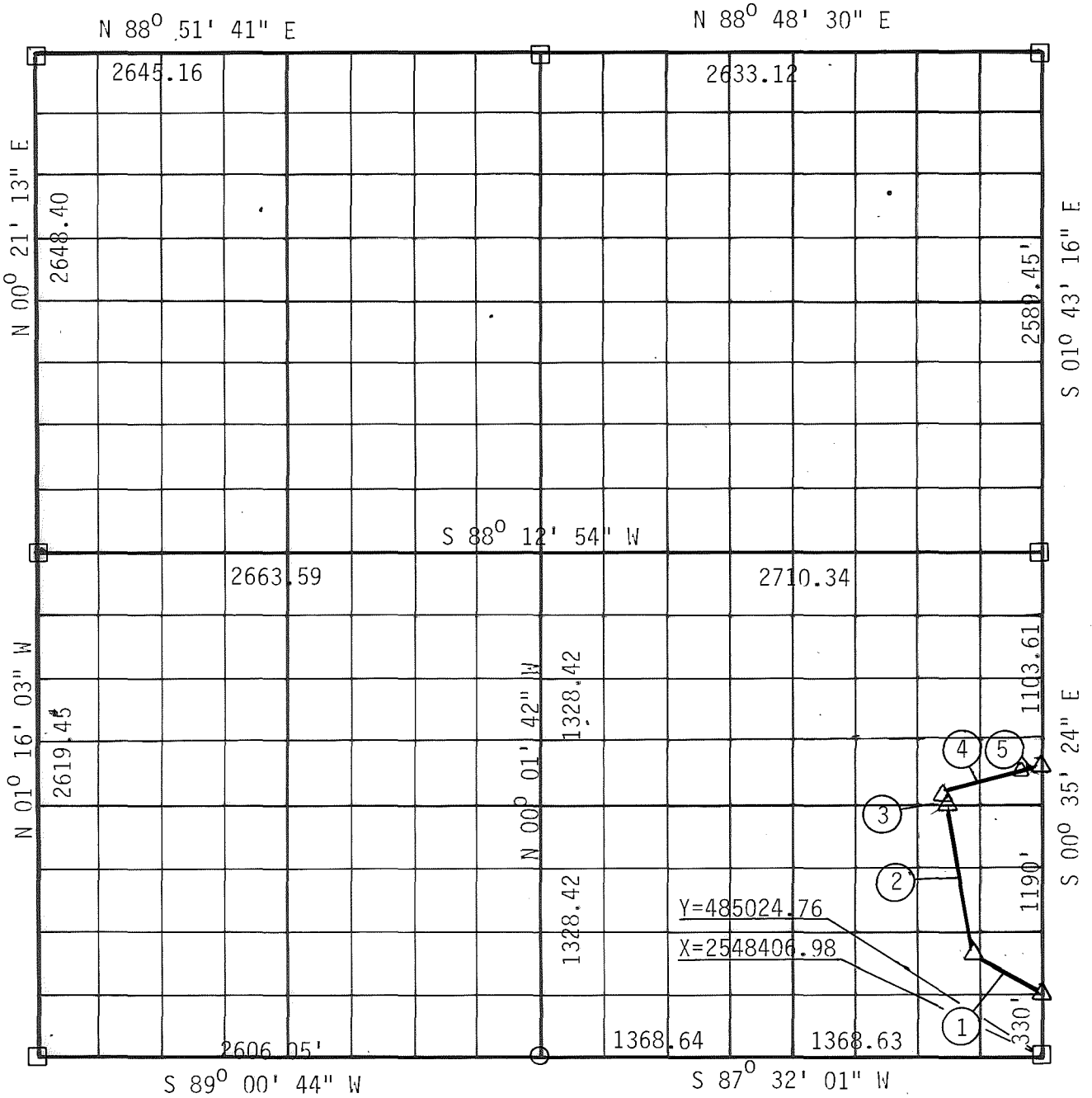


**PARTIAL BOUNDARY SURVEYS
SKIATOOK LAKE
HOMINY CREEK, OKLAHOMA**

Performed Under Contract Number DACW 56-81-C-0103

SEC 5 T 21 N R 11 E COUNTY OSAGE

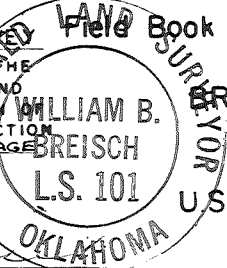


Course No.	Distance	Bearing	Course No.	Distance	Bearing
1	419.24	N 57° 29' 58" W			
2	753.64	N 11° 39' 54" W			
3	37.69	N 11° 39' 54" W			
4	450.00	N 69° 16' 32" E			
5	86.00	N 69° 16' 15" E			

CERTIFICATE OF SURVEY Field Book No. 13-219

Date NOVEMBER 1981

I HEREBY CERTIFY THAT THE ABOVE PLAT IS A TRUE AND CORRECT REPRESENTATION OF THE SURVEY MADE IN SECTION 5, T 21 N, R 11 E, OSAGE COUNTY, OKLAHOMA



WILLIAM B. BREISCH ENGINEERING CO. INC.

Under the Supervision of

U.S. ARMY ENGINEER DISTRICT, TULSA
CORPS OF ENGINEERS

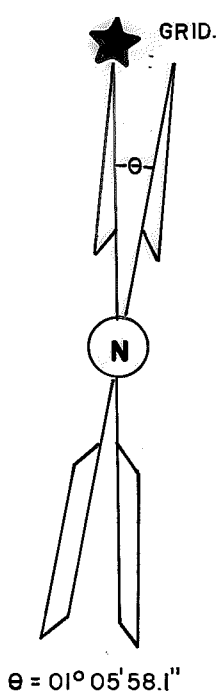
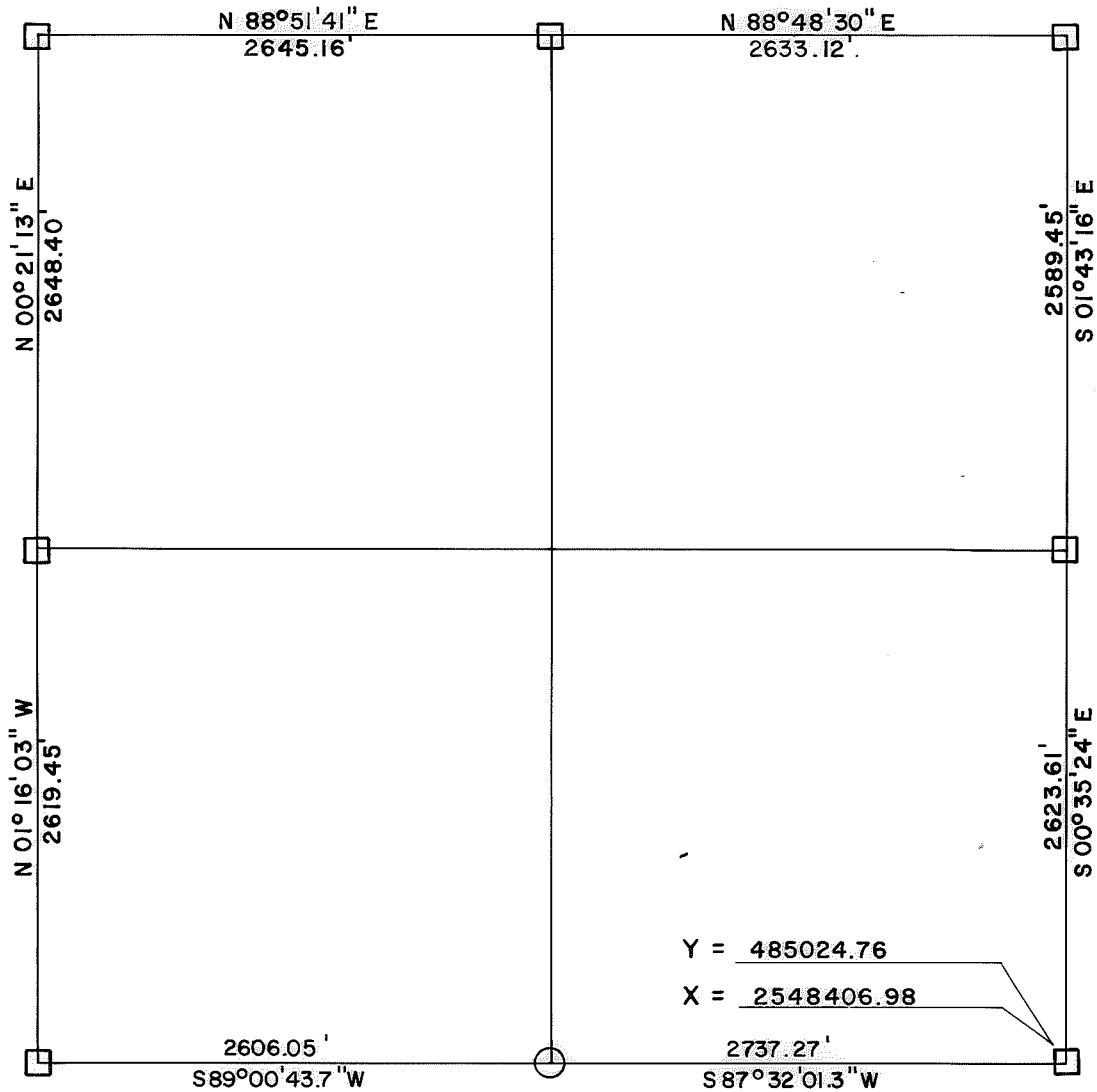
LEGEND

- ▲ MONUMENT
- ORIGINAL CORNER
- IRON PIN

W.B. Breisch
REGISTERED LAND SURVEYOR

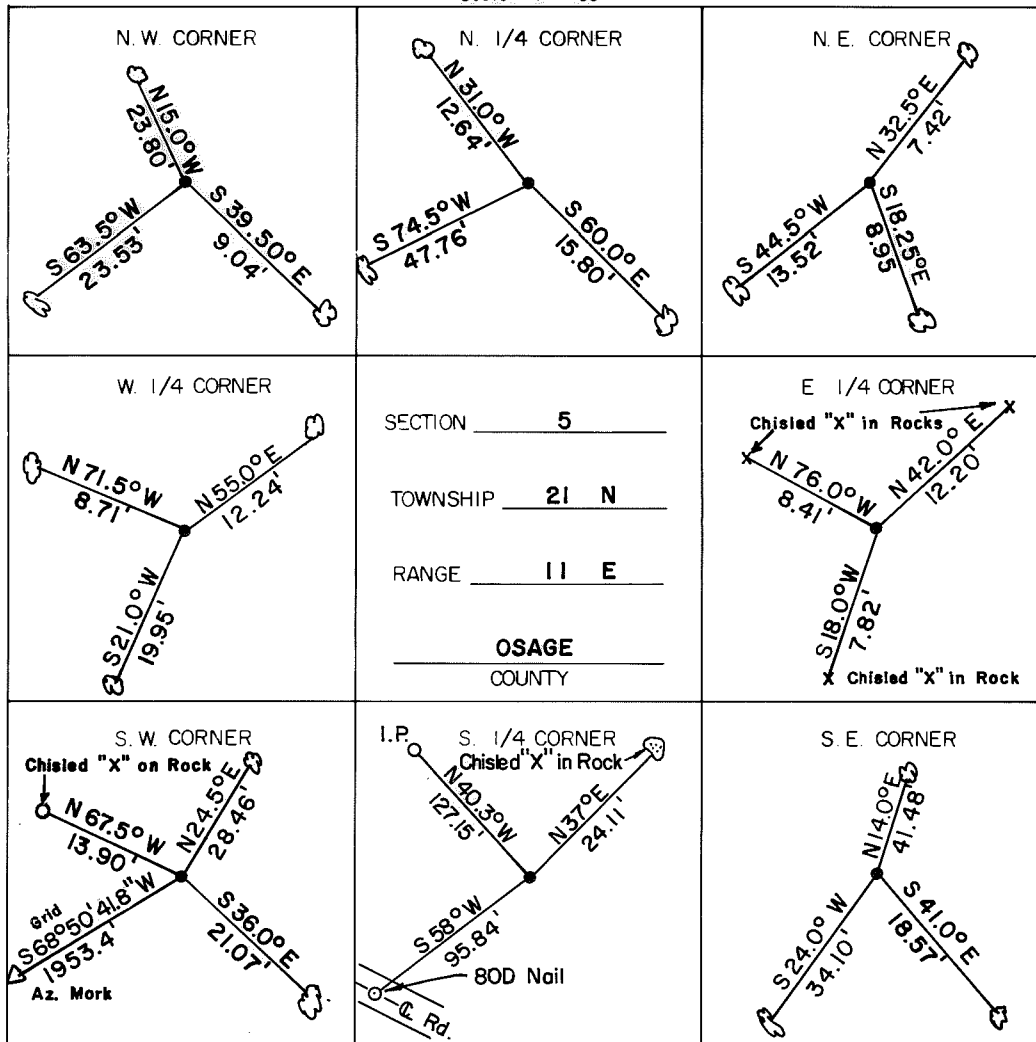
SKIATOOK LAKE AREA HOMINY CREEK, OKLAHOMA SECTION AND QUARTER SECTION CORNER SURVEY

Performed Under Contract Number DACW 56-74-C-0098



REFERENCES

Scale: 1" = 50'



LEGEND

- △ Monument
- Original Corner
- Iron Pin Set
- Iron Pin Found
- Tele. Pole
- Power Pole
- ⊗ Fence Post
- ▣ Hwy. R/W Marker
- Reference Marker
- ⊙ Tree

NOTE: Ties are to nail and washer unless otherwise noted.

Certificate of Survey

I hereby certify that the above plot is a true and correct representation of the survey of the above section.

Field Book No. 13-219

Under the Supervision of
US. ARMY ENGINEER
TULSA DISTRICT
CORP OF ENGINEERS



George E. Gilmore
REGISTERED LAND SURVEYOR L.S. # 251

DATE: Aug. 1974

