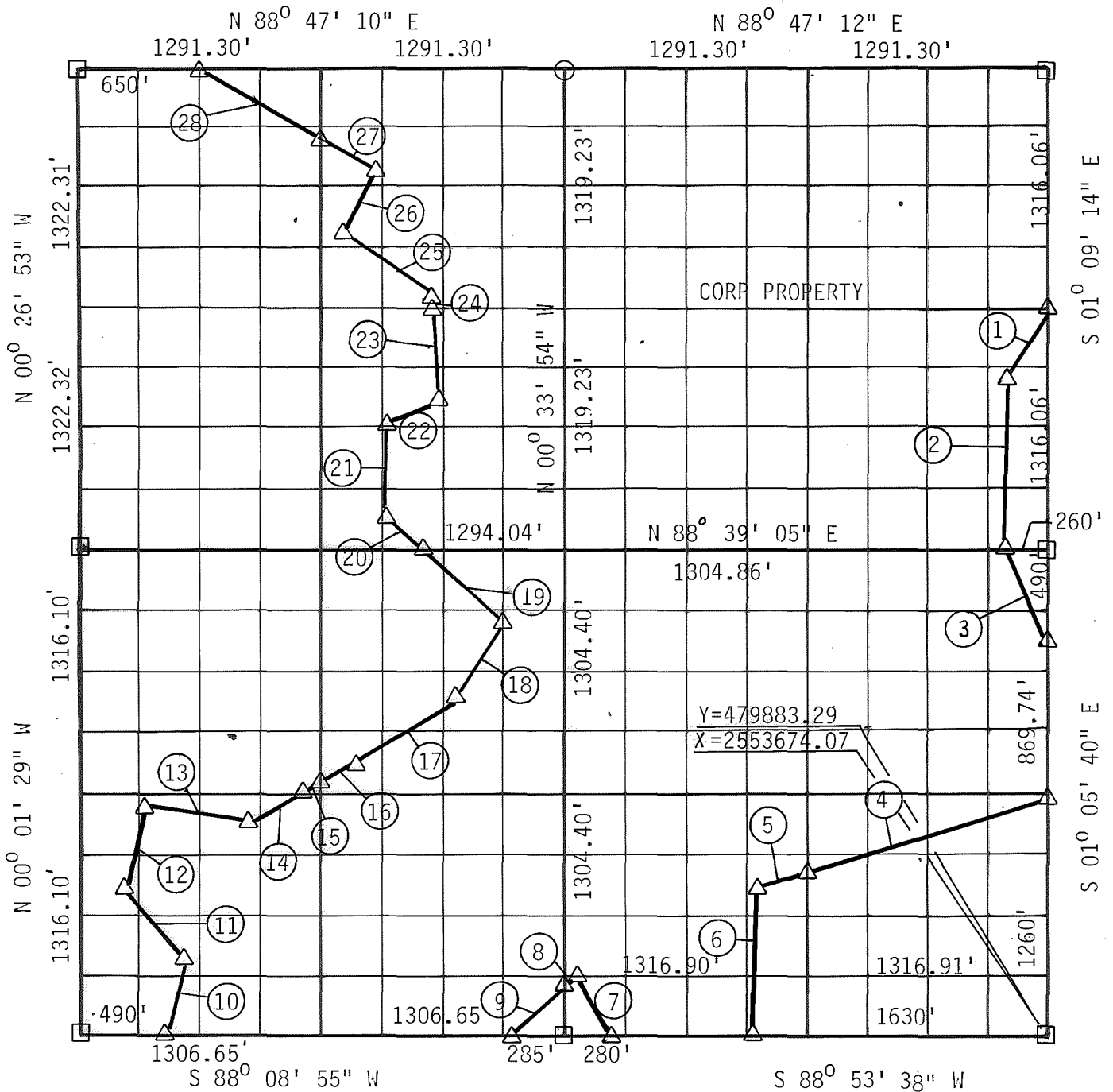


**PARTIAL BOUNDARY SURVEYS  
SKIATOOK LAKE  
HOMINY CREEK, OKLAHOMA**

Performed Under Contract Number DACW 56-81-C-0103

SEC 9 T 21 N R 11 E COUNTY OSAGE



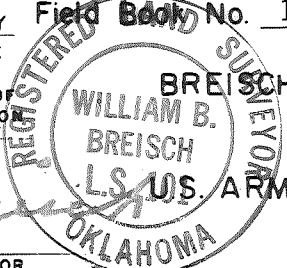
Course No.	Distance	Bearing	Course No.	Distance	Bearing
1	447.74'	N 29° 49' 53" E	14	431.67'	N 65° 18' 46" E
2	933.63'	S 00° 40' 08" W	15	6.42'	N 65° 18' 46" E
3	553.65'	S 29° 06' 30" E	16	244.28'	N 65° 18' 46" E
4	1363.38'	S 73° 14' 59" W	17	681.05'	N 52° 27' 25" E
5	312.74'	S 73° 14' 59" W	18	469.07'	N 31° 29' 15" E
6	808.03'	S 00° 03' 30" W	19	619.05'	N 49° 19' 30" W
7	330.85'	N 33° 06' 18" W	20	224.81'	N 49° 19' 30" W
8	127.20'	S 52° 47' 05" W	21	500.02'	N 00° 34' 23" W
9	482.43'	S 52° 47' 05" W	22	309.56'	N 58° 52' 39" E
10	411.44'	N 12° 50' 32" E	23	516.98'	N 05° 19' 33" W
11	537.24'	N 38° 34' 36" W	24	75.58'	N 05° 19' 33" W
12	445.11'	N 14° 58' 22" E	25	535.84'	N 49° 55' 14" W
13	548.29'	S 80° 01' 20" E	26	427.46'	N 24° 10' 00" E

CERTIFICATE OF SURVEY

Field Book No. 13-221

Date NOVEMBER 1981

I HEREBY CERTIFY THAT THE ABOVE PLAT IS A TRUE AND CORRECT REPRESENTATION OF THE SURVEY MADE IN SECTION 9, T 21 N, R 11 E, OSAGE COUNTY, OKLAHOMA



**BREISCH ENGINEERING CO. INC.**

Under the Supervision of

U.S. ARMY ENGINEER DISTRICT, TULSA  
CORPS OF ENGINEERS

LEGEND

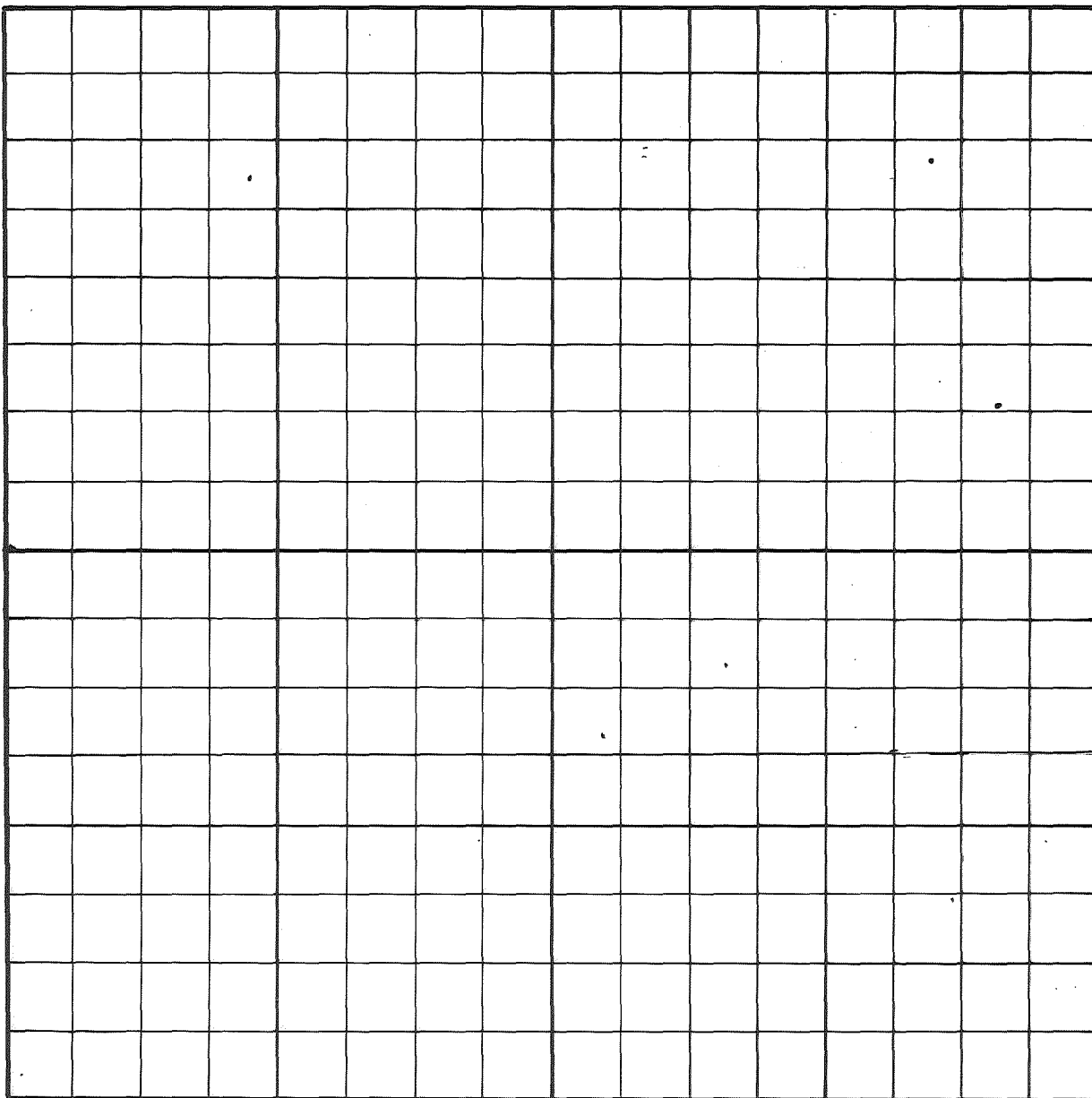
- ▲ MONUMENT
- ORIGINAL CORNER
- IRON PIN

REGISTERED LAND SURVEYOR

PARTIAL BOUNDARY SURVEYS  
 SKIATOOK LAKE  
 HOMINY CREEK, OKLAHOMA

Performed Under Contract Number DACW 56- 81- C- 0103

SEC 9 T 21 N R 11 E COUNTY OSAGE



Course No.	Distance	Bearing	Course No.	Distance	Bearing
27	403.83'	N 64° 20' 25" W			
28	714.47'	N 64° 20' 25" W			

CERTIFICATE OF SURVEY Field Book No. 13-221 Date NOVEMBER 1981

I HEREBY CERTIFY THAT THE ABOVE PLAT IS A TRUE AND CORRECT REPRESENTATION OF THE SURVEY MADE IN SECTION 9, T 21 N, R 11 E, OSAGE COUNTY, OKLAHOMA

**BREISCH ENGINEERING CO. INC.**

Under the Supervision of

**U.S. ARMY ENGINEER DISTRICT, TULSA  
 CORPS OF ENGINEERS**

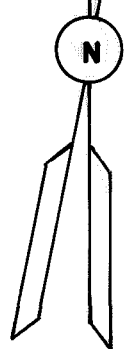
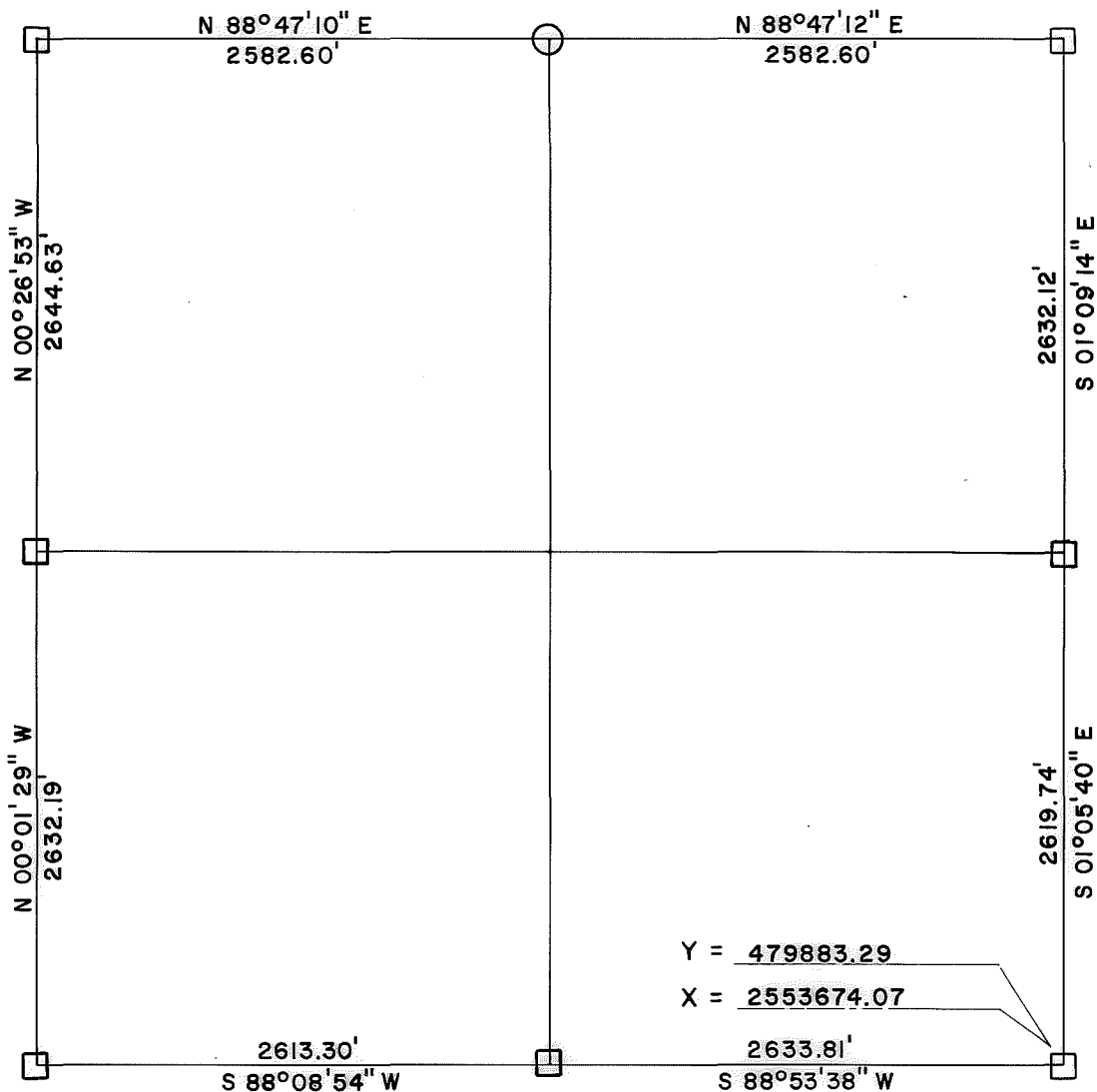
LEGEND  
 Δ MONUMENT  
 □ ORIGINAL CORNER  
 ○ IRON PIN

*W. B. Breisch*  
 REGISTERED LAND SURVEYOR  
 OKLAHOMA

# SKIATOOK LAKE AREA HOMINY CREEK, OKLAHOMA SECTION AND QUARTER SECTION CORNER SURVEY

Performed Under Contract Number DACW 56-74-C-0098

★ GRID.



$\theta = 01^{\circ}06'32.2''$

### REFERENCES

Scale: 1" = 50'

<p>N. W. CORNER</p>	<p>N. 1/4 CORNER</p>	<p>N. E. CORNER</p>
<p>W. 1/4 CORNER</p>	<p>SECTION <u>9</u></p> <p>TOWNSHIP <u>21 N</u></p> <p>RANGE <u>11 E</u></p> <p><b>OSAGE</b> COUNTY</p>	<p>E. 1/4 CORNER</p>
<p>S. W. CORNER</p> <p>Chiseled "x" in Rock</p>	<p>S. 1/4 CORNER</p>	<p>S. E. CORNER</p>

#### LEGEND

- △ Monument
- Original Corner
- Iron Pin Set
- Iron Pin Found
- Tele. Pole
- Power Pole
- ⊗ Fence Post
- ▣ Hwy. R/W Marker
- Reference Marker
- Tree

NOTE: Ties are to nail and washer unless otherwise noted.

Certificate of Survey

Field Book No. 13-221

I hereby certify that the above plot is a true and correct representation of the survey of the above section.

Under the Supervision of  
U.S. ARMY ENGINEER  
TULSA DISTRICT  
CORP OF ENGINEERS



*George E. Gilmore*  
REGISTERED LAND SURVEYOR L.S.# 251

DATE: JULY, 1974

