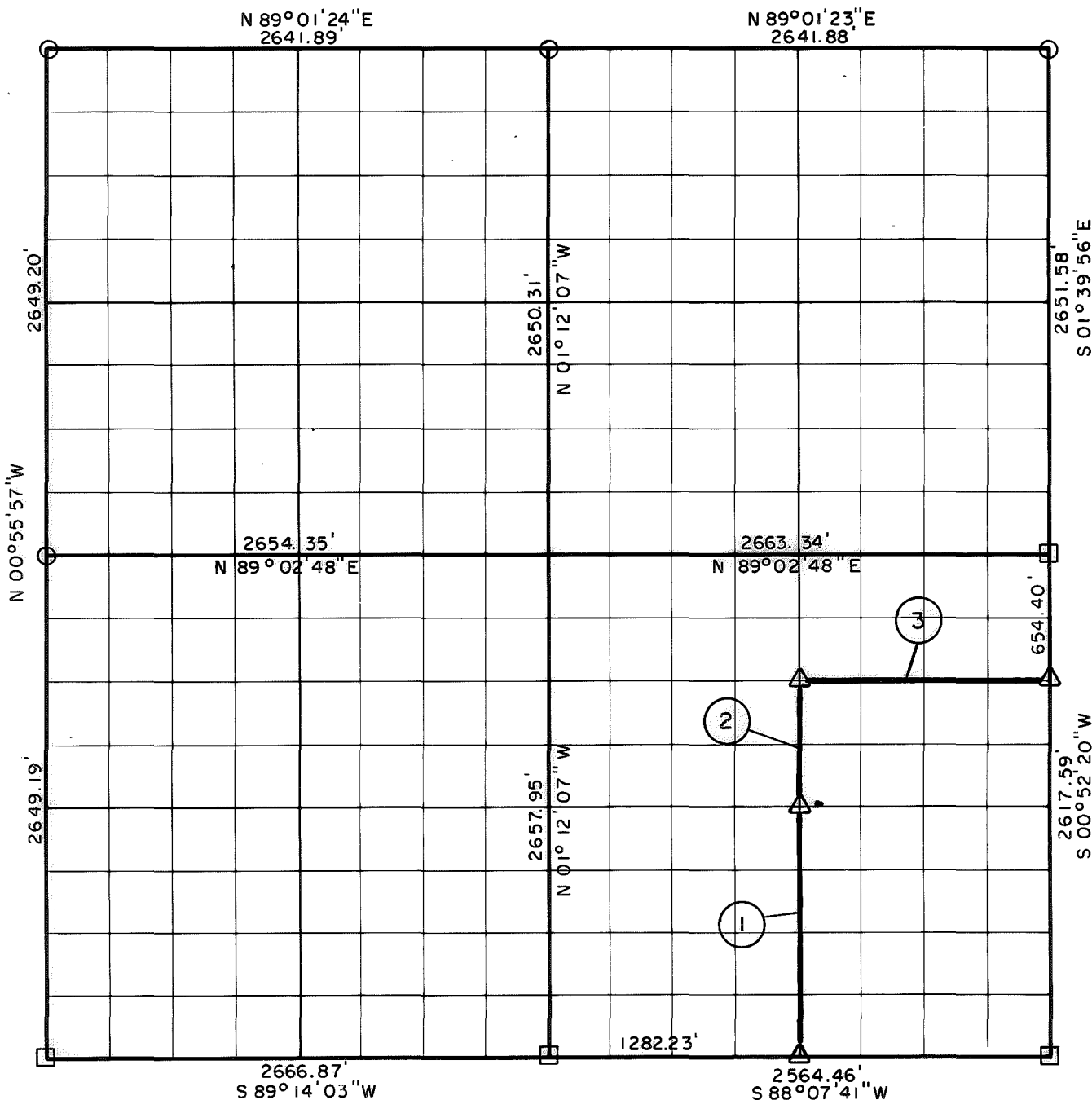


PARTIAL BOUNDARY SURVEYS  
SKIATOOK LAKE  
HOMINY CREEK, OKLAHOMA

Performed Under Contract Number DACW 56-78-C-0092

SEC. 15, T. 22 N., R. 10 E., COUNTY OSAGE

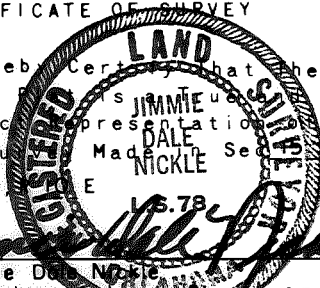


| Course No. | Distance | Bearing         |
|------------|----------|-----------------|
| 1          | 1318.82' | N 00° 07' 35" W |
| 2          | 659.41'  | N 00° 07' 35" W |
| 3          | 1316.06' | N 88° 50' 29" E |
|            |          |                 |
|            |          |                 |
|            |          |                 |
|            |          |                 |
|            |          |                 |
|            |          |                 |
|            |          |                 |
|            |          |                 |
|            |          |                 |

| Course No. | Distance | Bearing |
|------------|----------|---------|
|            |          |         |
|            |          |         |
|            |          |         |
|            |          |         |
|            |          |         |
|            |          |         |
|            |          |         |
|            |          |         |
|            |          |         |
|            |          |         |
|            |          |         |
|            |          |         |

Field Book No. 13-246 Date Sept., 1978

CERTIFICATE OF SURVEY  
I Herby Certify that the  
Above is a true and correct  
Representation of the  
The Survey Made in Section  
T. 22 N. R. 10 E. S. 15 E.  
1978



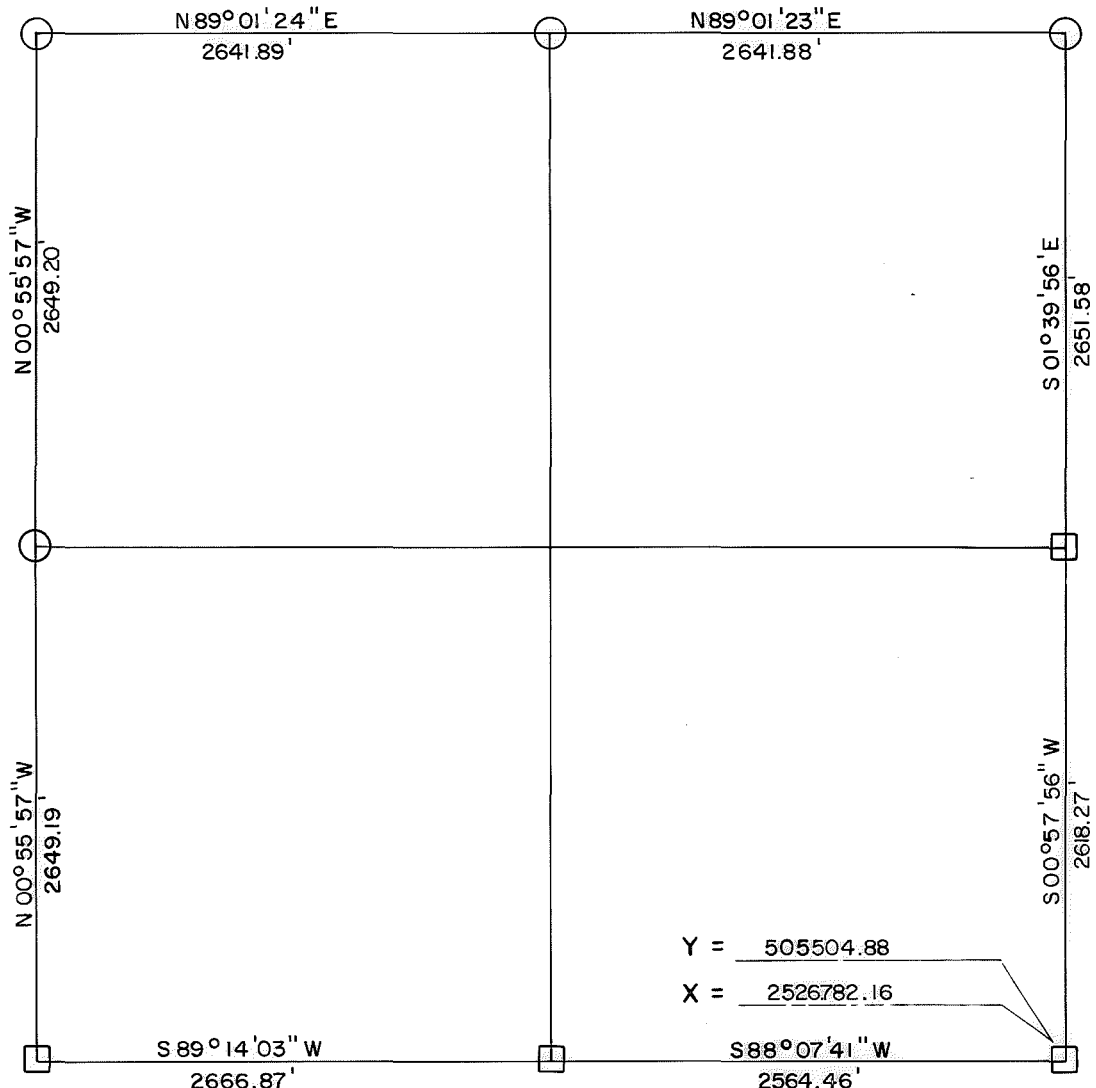
**CRAIG & KEITHLINE**  
Consulting Engineers  
For  
U.S. ARMY ENGINEER DISTRICT, TULSA  
CORPS OF ENGINEERS

△ MONUMENT  
□ ORIGINAL CORNER  
○ IRON PIN

# SKIATOOK LAKE AREA HOMINY CREEK, OKLAHOMA SECTION AND QUARTER SECTION CORNER SURVEY

Performed Under Contract Number DACW 56-74-C-0098

★ GRID.



### REFERENCES

Scale: 1" = 50'

|   |   |                     |
|---|---|---------------------|
| <p>N W CORNER</p>   | <p>N 1/4 CORNER</p>   | <p>N E CORNER</p>   |
| <p>W 1/4 CORNER</p> <p>Control Pt. AP0506-39</p> <p>TP16-2 Witness Cor.</p> | <p>SECTION <u>15</u></p> <p>TOWNSHIP <u>22 N</u></p> <p>RANGE <u>10 E</u></p> <p><b>OSAGE</b></p> <p>COUNTY</p> | <p>E 1/4 CORNER</p> |
| <p>S. W. CORNER</p>   | <p>S. 1/4 CORNER</p>  | <p>S. E. CORNER</p> |

### LEGEND

- △ Monument
- Original Corner
- Iron Pin Set
- Iron Pin Found
- Tele. Pole
- Power Pole
- ⊗ Fence Post
- Hwy. R/W Marker
- Reference Marker
- Tree

NOTE: Ties are to nail and washer unless otherwise noted.

### Certificate of Survey

I hereby certify that the above plat is a true and correct representation of the survey of the above section.

Field Book No. 13-246

Under the Supervision of  
US. ARMY ENGINEER  
TULSA DISTRICT  
CORP OF ENGINEERS



*George E. Gilmore*  
REGISTERED LAND SURVEYOR L.S. # 251

DATE: Aug. 1974

