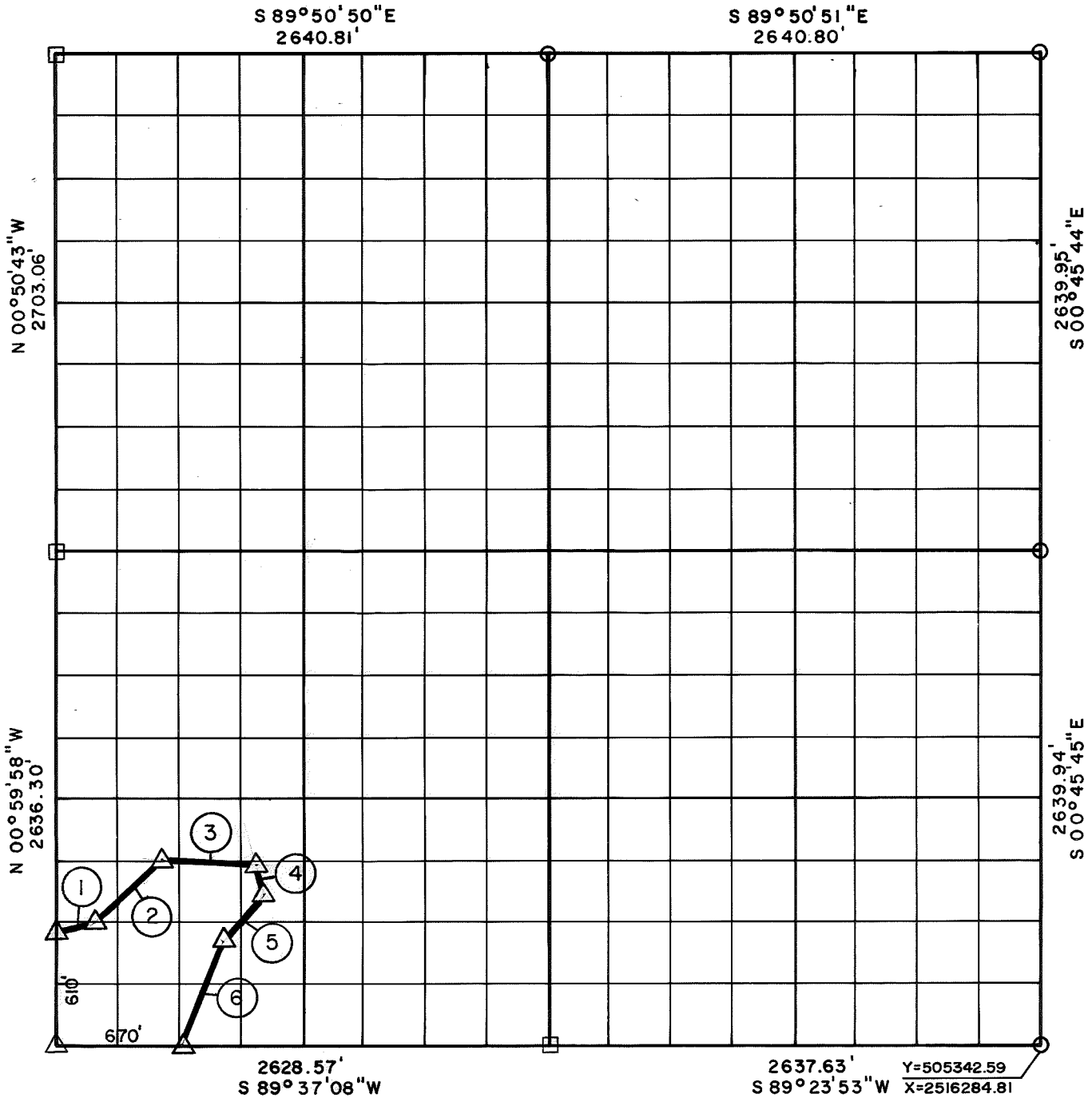


PARTIAL BOUNDARY SURVEYS
SKIATOOK LAKE
HOMINY CREEK, OKLAHOMA

Performed Under Contract Number DACW 56-81-C-0104

SEC. 17, T. 22N, R. 10E, COUNTY OSAGE



| Course No. | Distance | Bearing |
|------------|----------|-----------------|
| 1 | 197.66' | N 76° 02' 15" E |
| 2 | 505.89' | N 47° 00' 09" E |
| 3 | 500.78' | S 86° 47' 41" E |
| 4 | 162.52' | S 14° 58' 37" E |
| 5 | 338.10' | S 41° 02' 33" W |
| 6 | 593.29' | S 19° 49' 20" W |
| | | |
| | | |
| | | |
| | | |
| | | |
| | | |
| | | |
| | | |
| | | |

| Course No. | Distance | Bearing |
|------------|----------|---------|
| | | |
| | | |
| | | |
| | | |
| | | |
| | | |
| | | |
| | | |
| | | |
| | | |
| | | |
| | | |
| | | |
| | | |

CERTIFICATE OF SURVEY
I Hereby Certify That The
Above Plot Is A True And
Correct Representation Of
The Survey Made Of Section
T 22 N R 10 E
SCOTT, JR.
Basil E. Scott, Jr. S. No. 545

Field Book No. 13-248 Date Oct. 1981

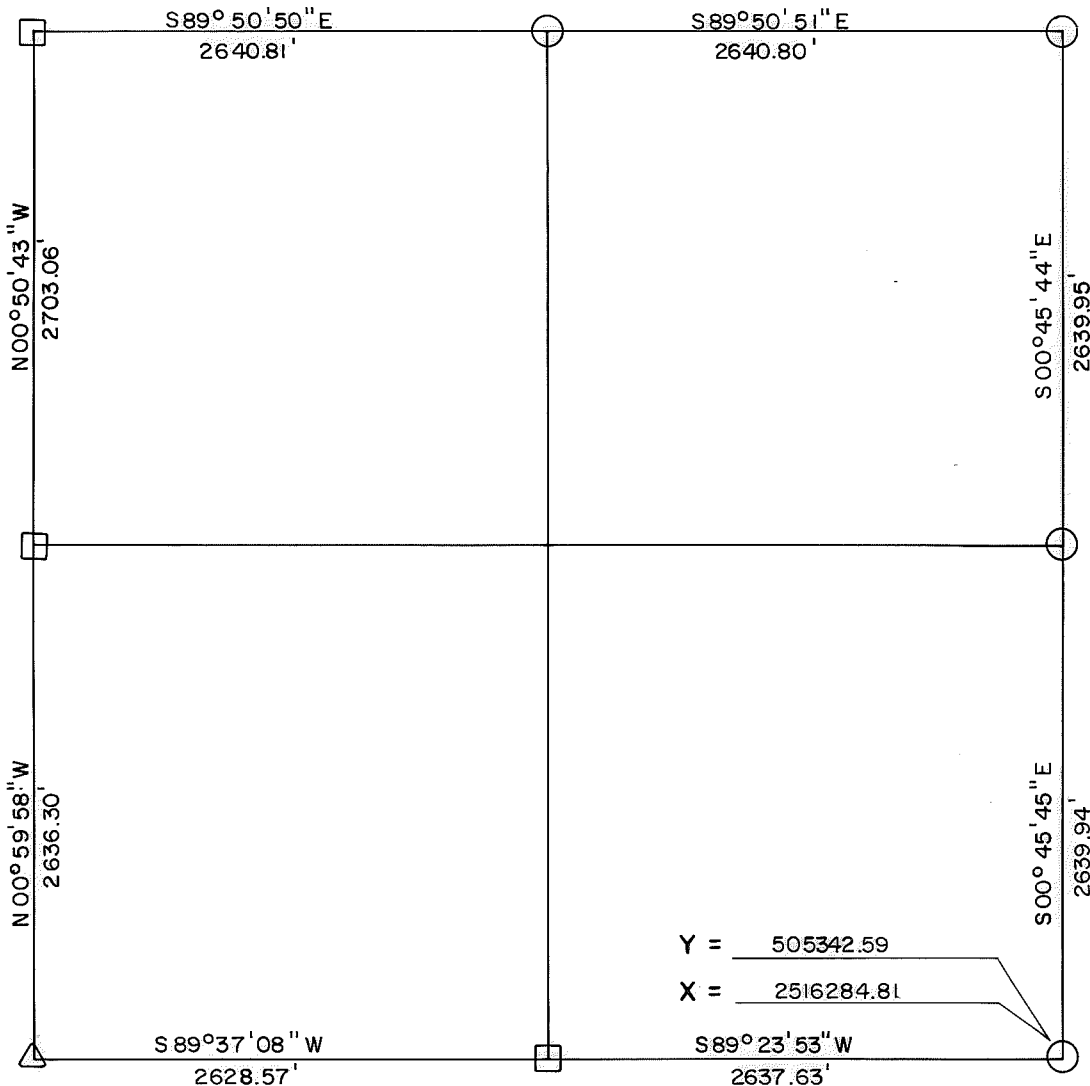
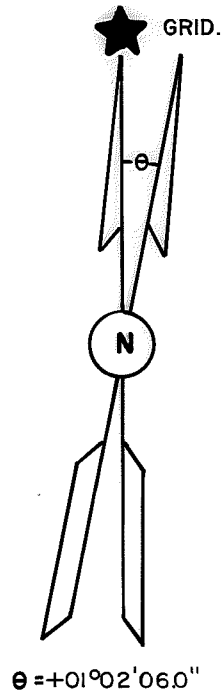
SCOTT & ASSOCIATES, INC.
Engineering & Surveying
For

U.S. ARMY ENGINEER DISTRICT, TULSA
CORPS OF ENGINEERS

△ MONUMENT
□ ORIGINAL CORNER
○ IRON PIN

SKIATOOK LAKE AREA HOMINY CREEK, OKLAHOMA SECTION AND QUARTER SECTION CORNER SURVEY

Performed Under Contract Number DACW 56-74-C-0098



Y = 505342.59
X = 2516284.81

REFERENCES

Scale: 1" = 50'

| | | |
|--|--|--------------------------------------|
| <p>N. W. CORNER</p> | <p>N. 1/4 CORNER</p> | <p>N. E. CORNER</p> |
| <p>W. 1/4 CORNER</p> <p>30" Hackberry</p> <p>U.S.G.L.O. Survey Mkr. At Base Of Tree.</p> | <p>SECTION <u>17</u></p> <p>TOWNSHIP <u>22 N</u></p> <p>RANGE <u>10 E</u></p> <p>OSAGE COUNTY</p> | <p>E 1/4 CORNER</p> <p>AP0506-40</p> |
| <p>S. W. CORNER</p> | <p>S. 1/4 CORNER</p> | <p>S. E. CORNER</p> |

LEGEND

- △ Monument
- Original Corner
- Iron Pin Set
- Iron Pin Found
- Tele. Pole
- Power Pole
- ⊗ Fence Post
- Hwy. R/W Marker
- Reference Marker
- Tree

NOTE: Ties are to nail and washer unless otherwise noted.



Certificate of Survey

I hereby certify that the above plat is a true and correct representation of the survey of the above section.

Field Book No. 13-248



Under the Supervision of
U.S. ARMY ENGINEER
TULSA DISTRICT
CORP OF ENGINEERS

George E. Gilmore
REGISTERED LAND SURVEYOR L.S. # 251

DATE: Aug. 1974