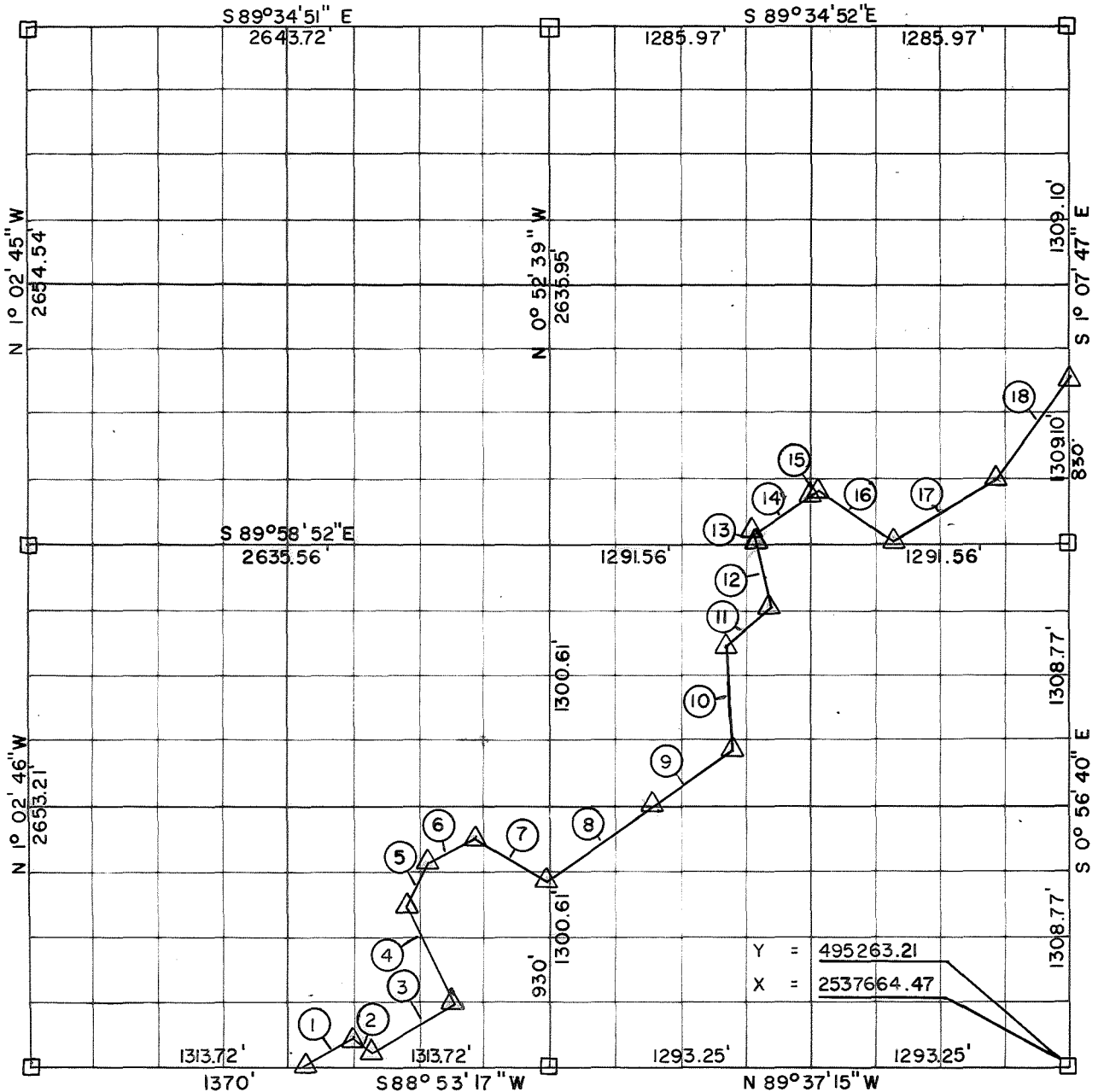


**PARTIAL BOUNDARY SURVEYS  
SKIATOOK LAKE  
HOMINY CREEK, OKLAHOMA**

Performed Under Contract Number DACW 56-81-C-0103

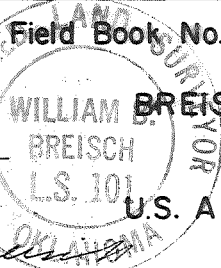
SEC 25 T 22 N R 10 E COUNTY OSAGE



Course No.	Distance	Bearing	Course No.	Distance	Bearing
1	306.75'	N 57° 39' 50" E	14	286.36'	N 40° 26' 46" E
2	102.59'	S 43° 01' 30" E	15	114.42'	N 40° 26' 46" E
3	492.44'	N 60° 49' 57" E	16	452.13'	S 57° 11' 19" E
4	552.86'	N 24° 00' 54" W	17	620.18'	N 60° 32' 30" E
5	257.39'	N 24° 04' 32" E	18	537.25'	N 32° 03' 15" E
6	283.99'	N 63° 53' 10" E			
7	423.15'	N 55° 30' 00" E			
8	605.00'	N 52° 25' 51" E			
9	550.93'	N 52° 25' 51" E			
10	500.90'	N 3° 26' 01" W			
11	307.77'	N 46° 58' 30" E			
12	258.09'	N 7° 31' 26" W			
13	9.21'	N 7° 31' 26" W			

CERTIFICATE OF SURVEY Field Book No. 13-256 Date NOVEMBER, 1981

I HEREBY CERTIFY THAT THE ABOVE PLAT IS A TRUE AND CORRECT REPRESENTATION OF THE SURVEY MADE IN SECTION 25, T 22 N, R 10 E, OSAGE COUNTY, OKLAHOMA



**BREISCH ENGINEERING CO. INC.**

Under the Supervision of

**U.S. ARMY ENGINEER DISTRICT, TULSA  
CORPS OF ENGINEERS**

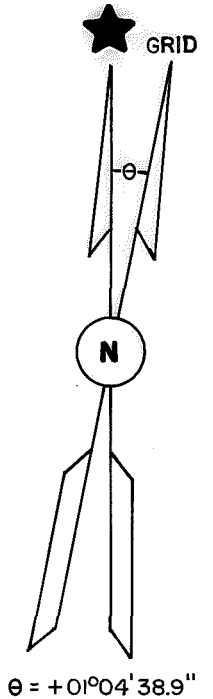
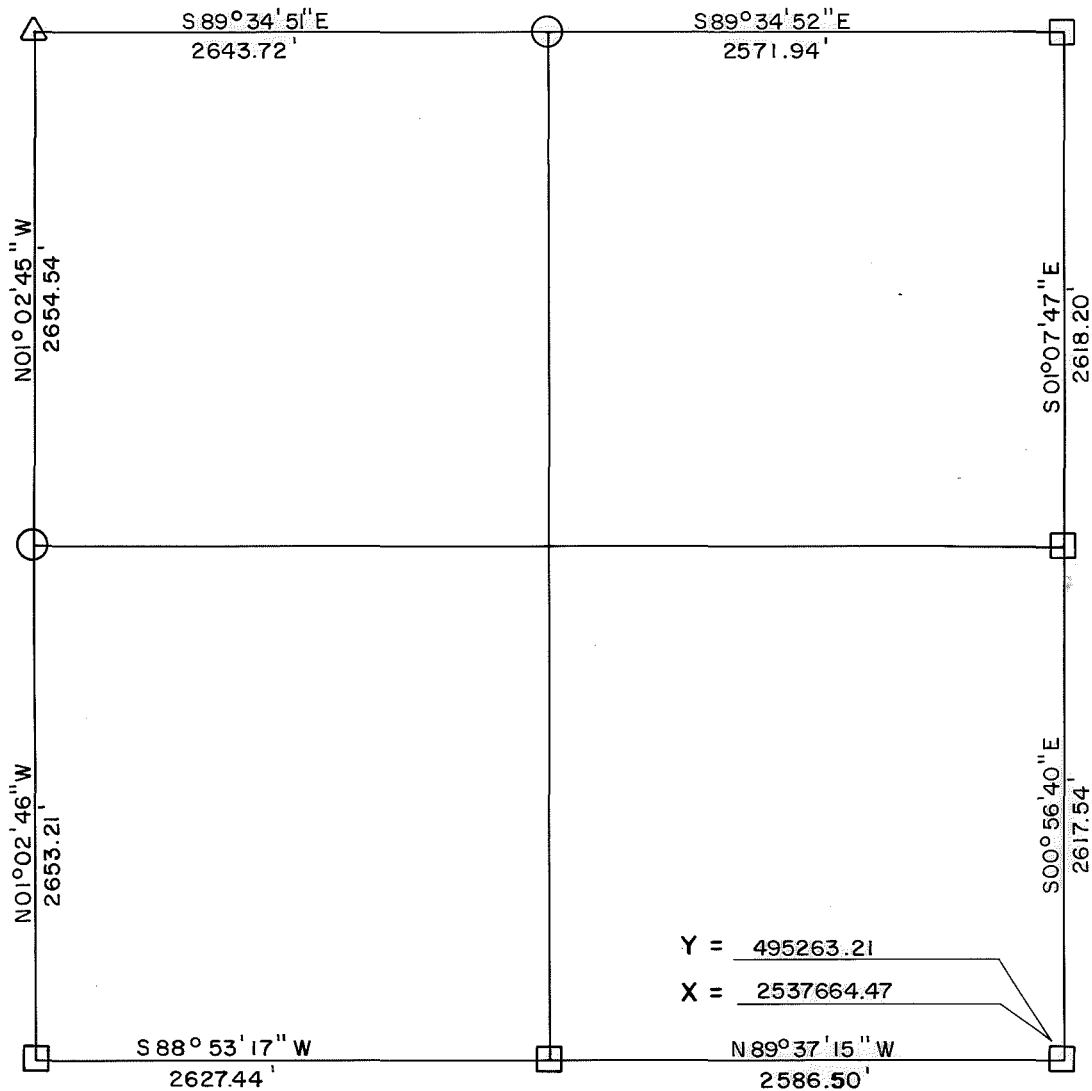
**LEGEND**

- ▲ MONUMENT
- ORIGINAL CORNER
- IRON PIN

REGISTERED LAND SURVEYOR

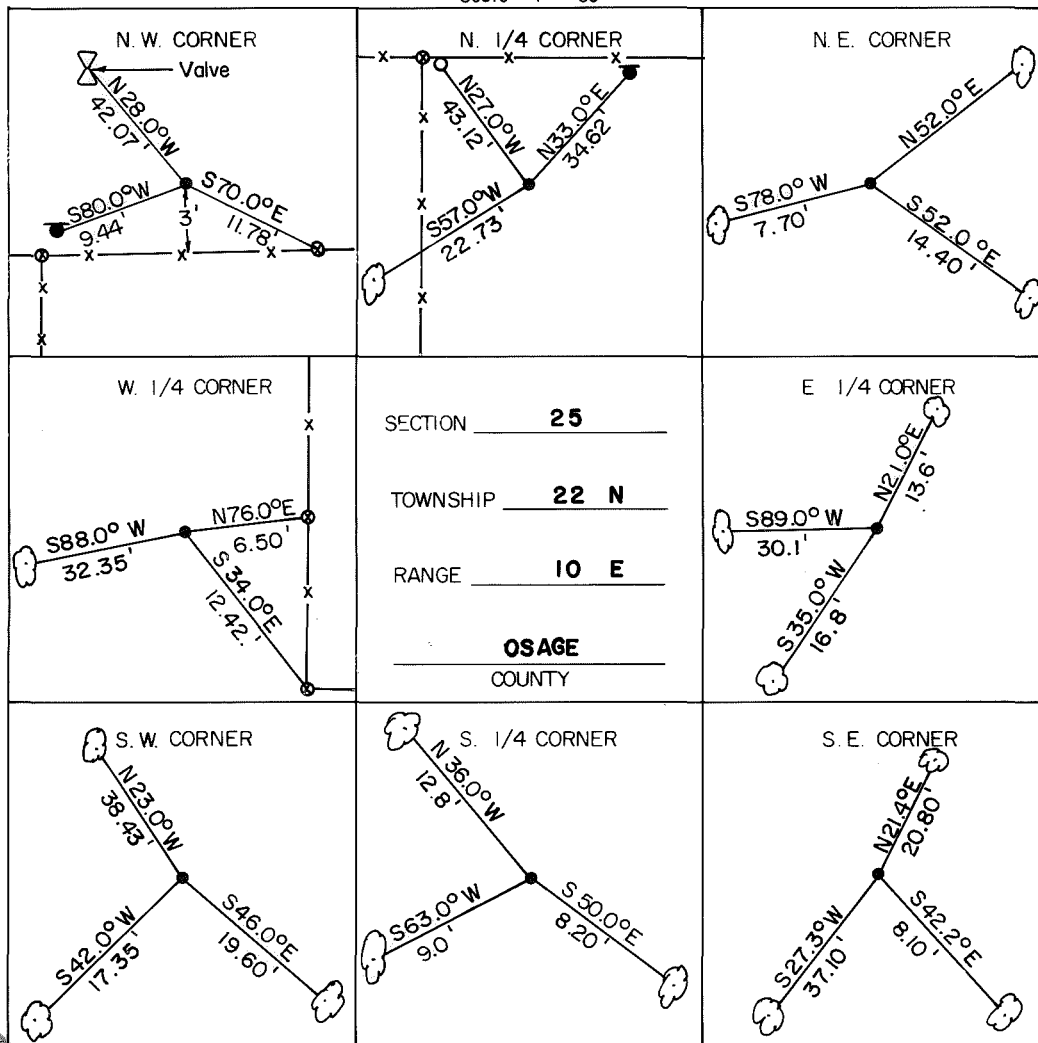
# SKIATOOK LAKE AREA HOMINY CREEK, OKLAHOMA SECTION AND QUARTER SECTION CORNER SURVEY

Performed Under Contract Number DACW 56-74-C-0098



### REFERENCES

Scale: 1" = 50'



#### LEGEND

- △ Monument
- Original Corner
- Iron Pin Set
- Iron Pin Found
- Tele. Pole
- Power Pole
- ⊗ Fence Post
- Hwy. R/W Marker
- Reference Marker
- Tree

NOTE: Ties are to nail and washer unless otherwise noted.

#### Certificate of Survey

I hereby certify that the above plat is a true and correct representation of the survey of the above section.

Field Book No. 13-256

Under the Supervision of  
US. ARMY ENGINEER  
TULSA DISTRICT  
CORP OF ENGINEERS



*George E. Gilmore*  
REGISTERED LAND SURVEYOR L.S. # 251

DATE: Aug. 1974