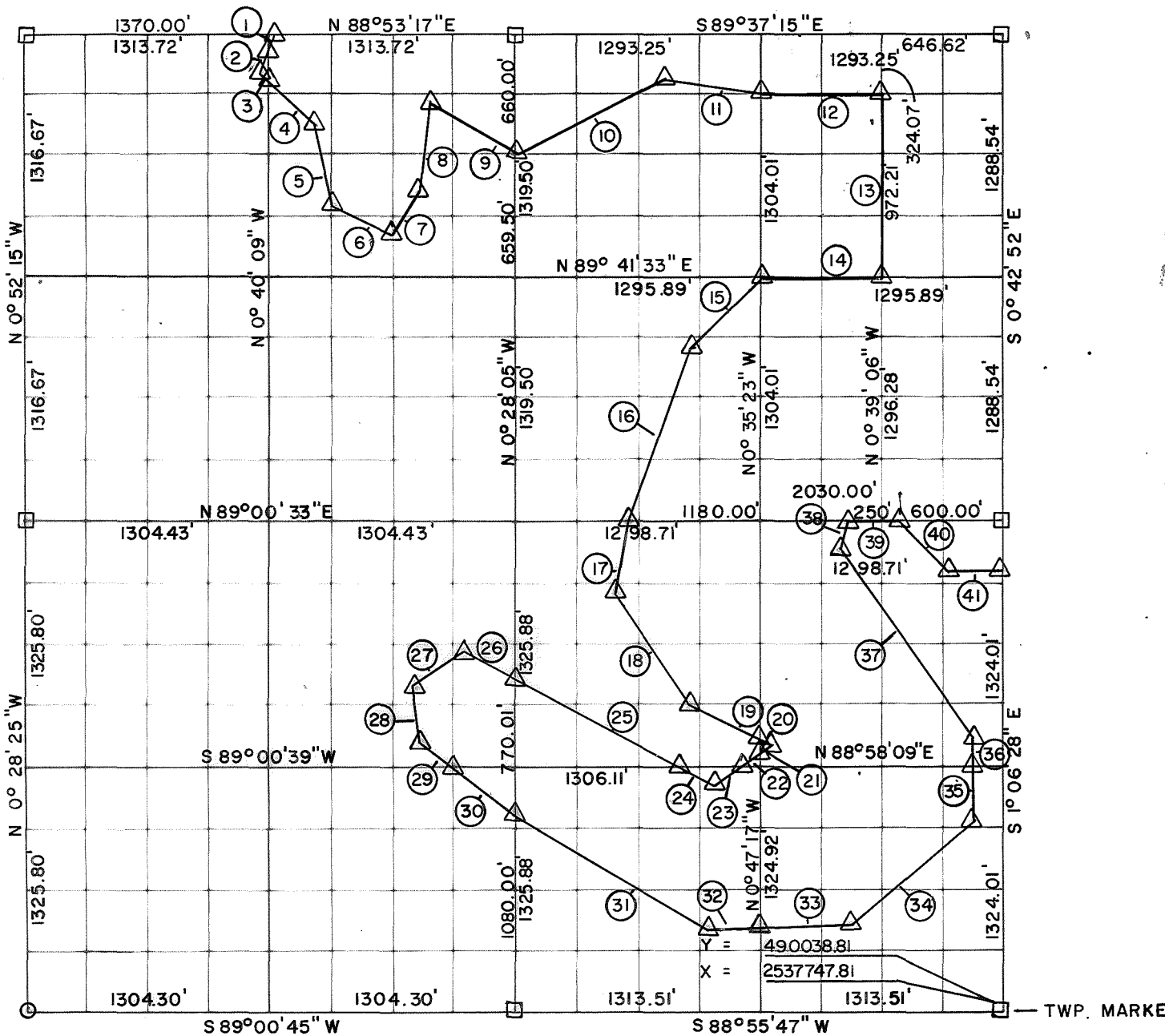


**PARTIAL BOUNDARY SURVEYS
SKIATOOK LAKE
HOMINY CREEK, OKLAHOMA**

Performed Under Contract Number DACW 56-81-C-0103

SEC 36 T 22 N R 10 E COUNTY OSAGE



Course No.	Distance	Bearing	Course No.	Distance	Bearing
1	250.67	S 12° 18' 16" W	14	647.97	S 89° 41' 33" W
2	11.27	S 12° 18' 16" W	15	561.19	S 41° 53' 00" W
3	3.72	S 43° 13' 43" E	16	962.03	S 20° 53' 37" W
4	339.39	S 43° 13' 43" E	17	347.73	S 11° 05' 39" W
5	470.74	S 12° 15' 53" E	18	745.18	S 40° 06' 03" W
6	335.60	S 65° 20' 39" E	19	388.48	S 59° 09' 12" E
7	287.27	N 58° 31' 23" E	20	30.83	S 59° 09' 12" E
8	520.43	N 08° 17' 09" E	21	35.19	S 47° 26' 12" W
9	407.87	S 61° 49' 28" E	22	244.53	S 47° 26' 12" W
10	893.61	N 62° 21' 10" E	23	52.92	S 47° 26' 12" W
11	507.51	S 79° 52' 30" E	24	76.23	N 63° 38' 08" W
12	646.96	S 89° 47' 32" E	25	1139.04	N 63° 38' 08" W
13	972.21	S 0° 39' 06" E	26	292.71	N 67° 51' 39" W

CERTIFICATE OF SURVEY Field Book No. 13-261 Date November, 1981

I HEREBY CERTIFY THAT THE ABOVE PLAT IS A TRUE AND CORRECT REPRESENTATION OF THE SURVEY MADE IN SECTION 36, T 22 N, R 10 E, OSAGE COUNTY, OKLAHOMA

WB Breisch
REGISTERED LAND SURVEYOR
OKLAHOMA

BREISCH ENGINEERING CO. INC.

Under the Supervision of

**U.S. ARMY ENGINEER DISTRICT, TULSA
CORPS OF ENGINEERS**

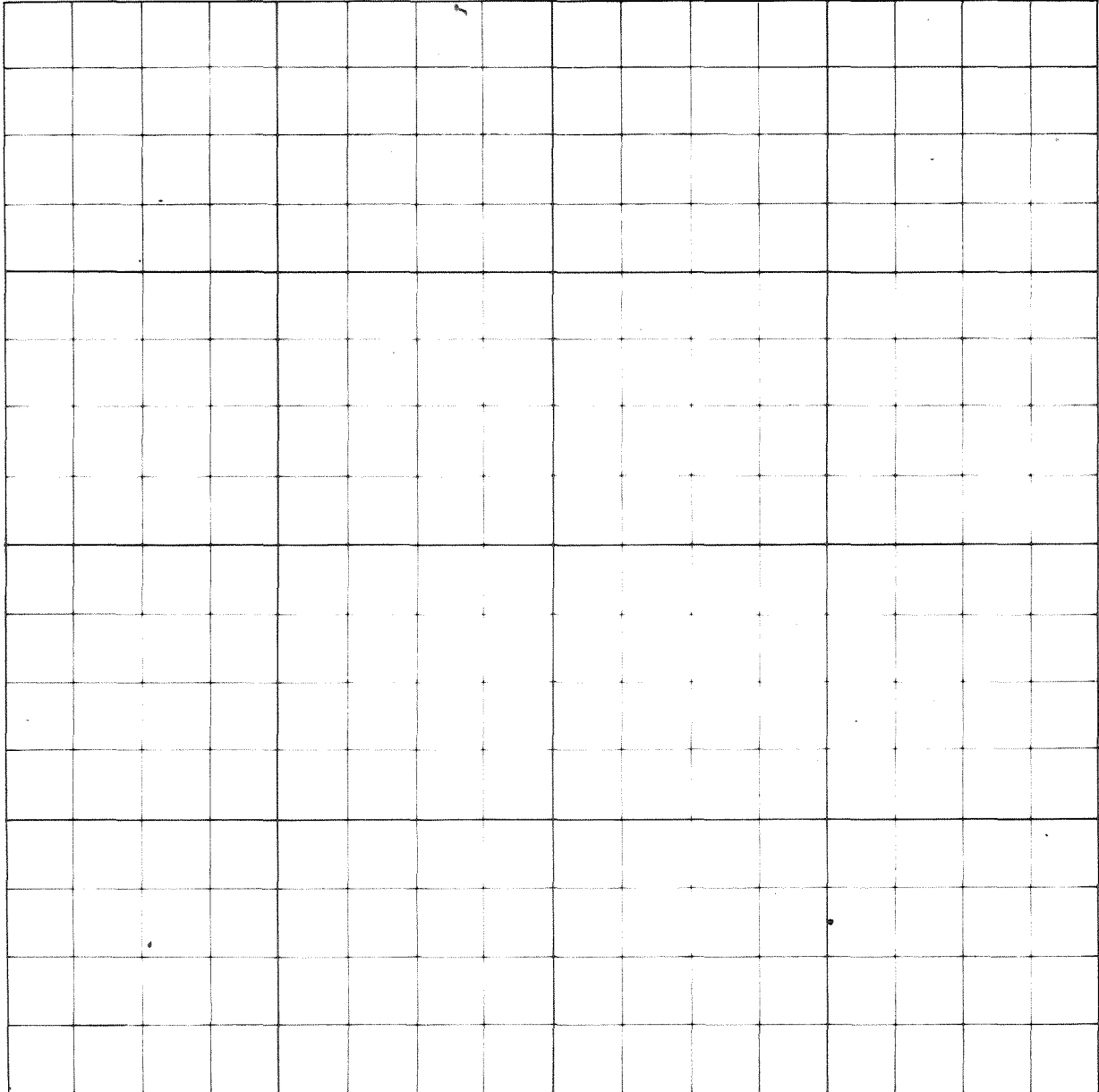
LEGEND

- ▲ MONUMENT
- ORIGINAL CORNER
- IRON PIN

PARTIAL BOUNDARY SURVEYS
SKIATOOK LAKE
HOMINY CREEK, OKLAHOMA

Performed Under Contract Number DACW 56- 81- C-0103

SEC 36 T 22 N R 10 E COUNTY OSAGE



Course No.	Distance	Bearing	Course No.	Distance	Bearing
27	346.01	S 52° 38' 32" W	40	393.96	S 50° 25' 59" E
28	286.58	S 60° 00' 32" E	41	301.64	N 89° 44' 16" W
29	244.31	S 53° 35' 25" E			
30	404.82	S 53° 35' 25" E			
31	1098.05	S 62° 20' 32" E			
32	342.90	S 86° 36' 41" E			
33	418.43	S 86° 36' 41" E			
34	797.76	N 49° 19' 15" E			
35	323.14	N 2° 11' 19" E			
36	462.43	N 2° 11' 19" E			
37	1014.75	N 44° 24' 04" W			
38	148.07	N 31° 13' 00" E			
39	250.00	N 89° 00' 33" E			

CERTIFICATE OF SURVEY Field Book No. 13-261 Date NOVEMBER 1981

I HEREBY CERTIFY THAT THE ABOVE PLAT IS A TRUE AND CORRECT REPRESENTATION OF THE SURVEY MADE IN SECTION 36, T 22 N, R 10 E, OSAGE COUNTY, OKLAHOMA.

BREISCH ENGINEERING CO. INC.

Under the Supervision of

U.S. ARMY ENGINEER DISTRICT, TULSA
CORPS OF ENGINEERS

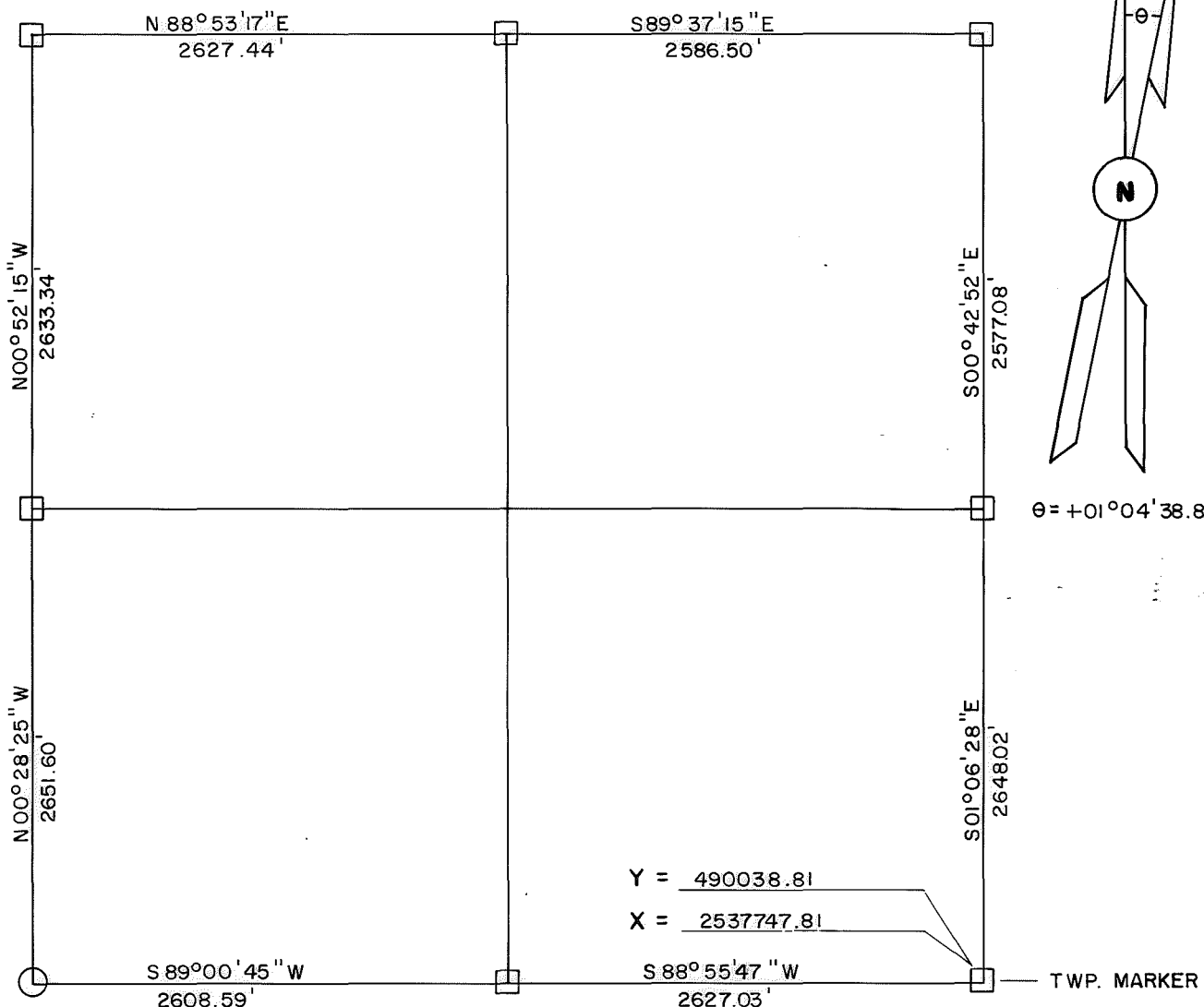
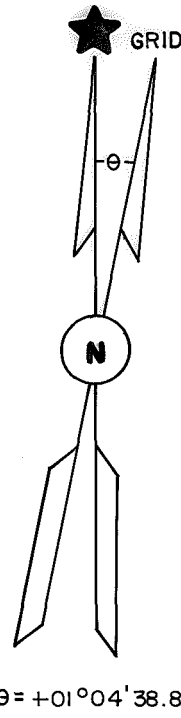
LEGEND

- Δ MONUMENT
- ORIGINAL CORNER
- IRON PIN

W.B. Breisch
REGISTERED LAND SURVEYOR

SKIATOOK LAKE AREA HOMINY CREEK, OKLAHOMA SECTION AND QUARTER SECTION CORNER SURVEY

Performed Under Contract Number DACW 56-74-C-0098

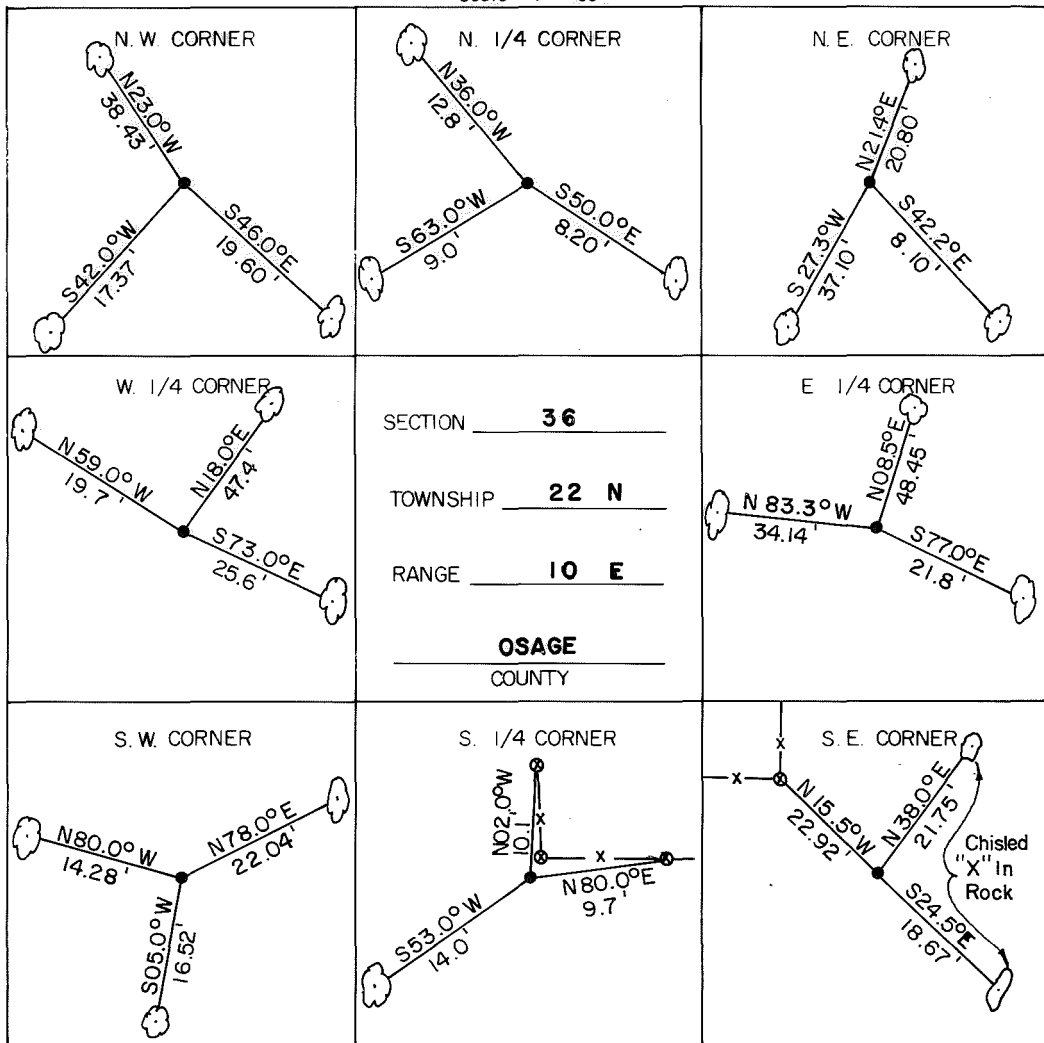


Y = 490038.81
X = 2537747.81

TWP. MARKER

REFERENCES

Scale: 1" = 50'



LEGEND

- △ Monument
- Original Corner
- Iron Pin Set
- Iron Pin Found
- Tele. Pole
- Power Pole
- ⊗ Fence Post
- Hwy. R/W Marker
- Reference Marker
- Tree

NOTE: Ties are to nail and washer unless otherwise noted.



Certificate of Survey

I hereby certify that the above plat is a true and correct representation of the survey of the above section.

Field Book No. 13-261



George E. Gilmore
REGISTERED LAND SURVEYOR L.S. # 251

Under the Supervision of
US. ARMY ENGINEER
TULSA DISTRICT
CORP OF ENGINEERS

DATE: Aug. 1974