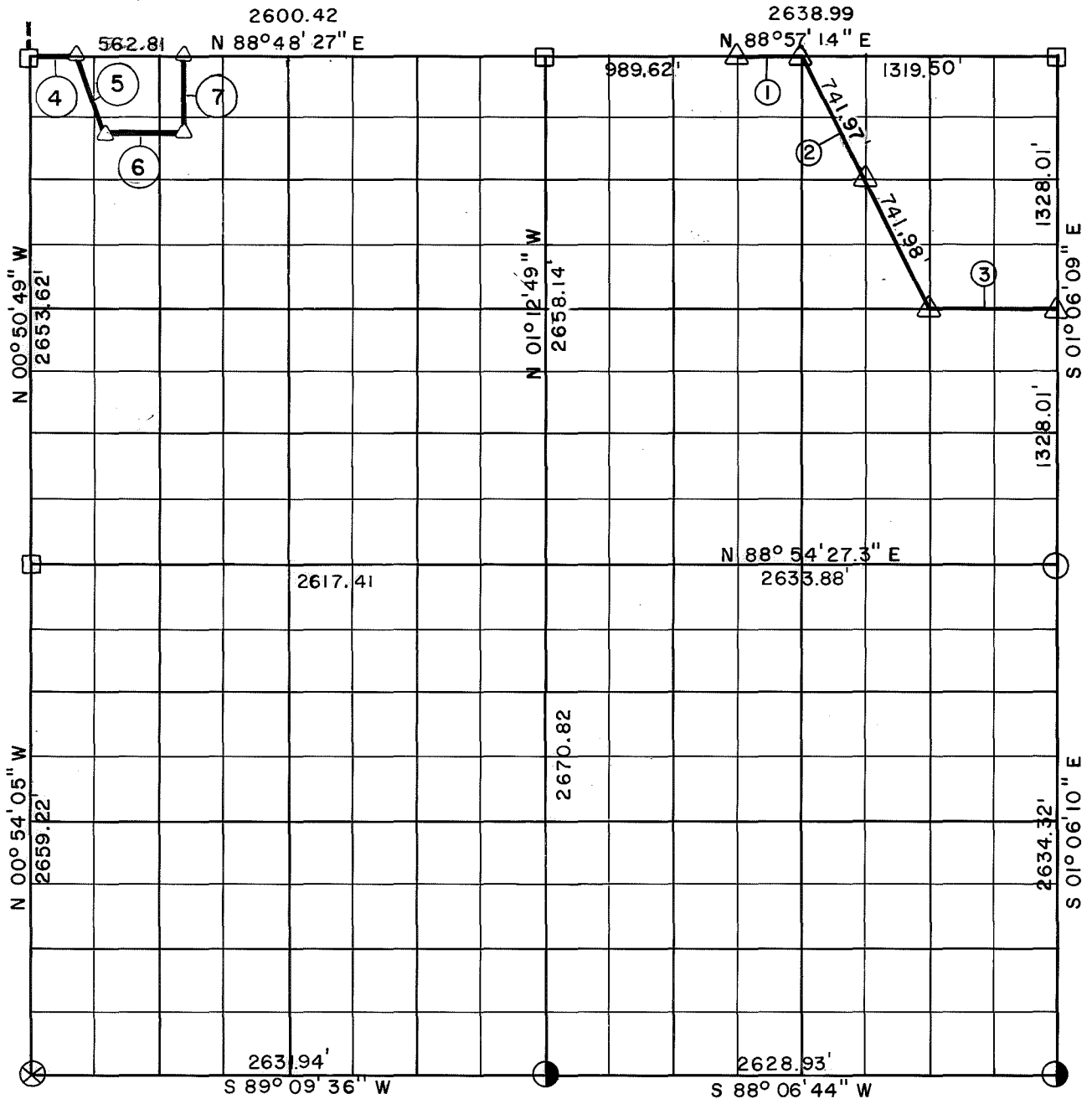


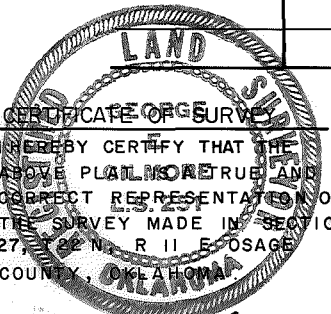
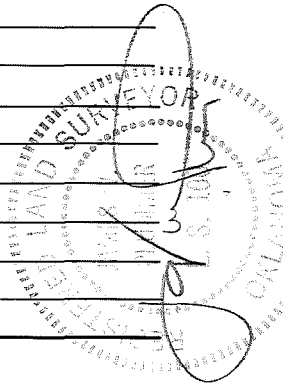
# RECORD BOUNDARY PLAT

SKIATOOK LAKE  
HOMINY CREEK, OKLAHOMA

SEC. 27 T 22 N R 11 E COUNTY OSAGE



Course No.	Distance	Bearing	Course No.	Distance	Bearing
1	329.87'	N 88°57'14" E			
2	1483.95'	S 27°31'39" E			
3	659.11'	N 88°55'50" E			
* 4	250.00'	N 88°48'27" E			
5	430.09'	S 22°45'42" E			
6	400.00'	N 88°48'27" E			
7	400.00'	N 0°31'08" W			



CERTIFICATE OF SURVEY  
I HEREBY CERTIFY THAT THE ABOVE PLAT IS A TRUE AND CORRECT REPRESENTATION OF THE SURVEY MADE IN SECTION 27, T 22 N, R 11 E, OSAGE COUNTY, OKLAHOMA  
*George E. Gilmore*  
G. E. GILMORE L.S. 251

Field Book No. 13-199 Date July 1974

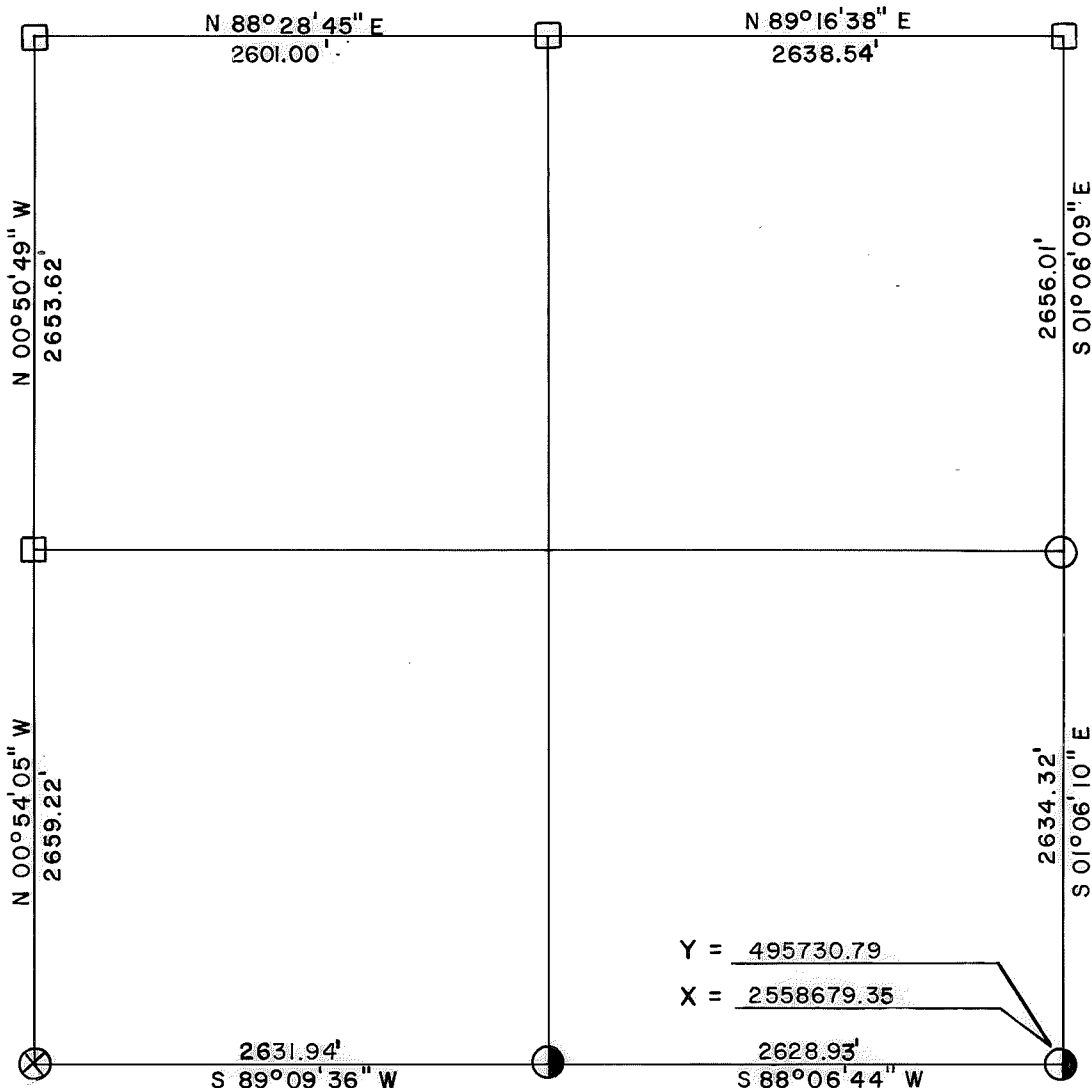
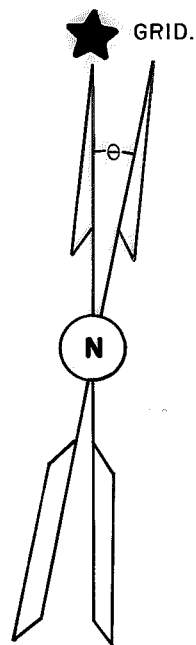
U.S. ARMY ENGINEER DISTRICT, TULSA  
CORPS OF ENGINEERS

\* NOTE: COURSES 4 THROUGH 7 SURVEYED BY PLUMMER-BRUMMETT, INC.

- LEGEND  
 Δ MONUMENT  
 □ ORIGINAL CORNER  
 ○ IRON PIN

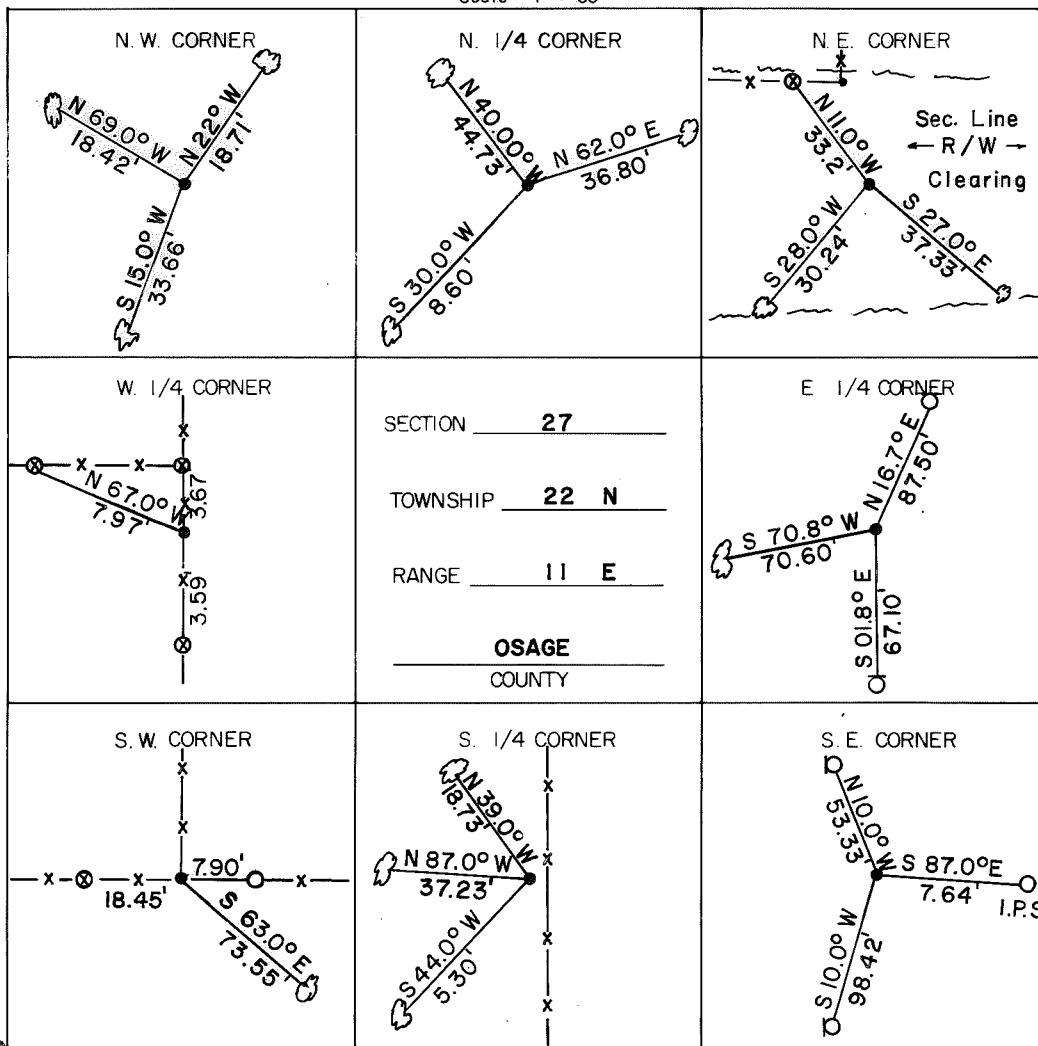
# SKIATOOK LAKE AREA HOMINY CREEK, OKLAHOMA SECTION AND QUARTER SECTION CORNER SURVEY

Performed Under Contract Number DACW 56-74-C-0098



### REFERENCES

Scale: 1" = 50'



### LEGEND

- △ Monument
- Original Corner
- Iron Pin Set
- Iron Pin Found
- Tele. Pole
- Power Pole
- ⊗ Fence Post
- Hwy. R/W Marker
- Reference Marker
- Tree

NOTE: Ties are to nail and washer unless otherwise noted.

### Certificate of Survey

I hereby certify that the above plat is a true and correct representation of the survey of the above section.

Field Book No. 13-199

Under the Supervision of  
US. ARMY ENGINEER  
TULSA DISTRICT  
CORP OF ENGINEERS



*George E. Gilmore*  
REGISTERED LAND SURVEYOR L.S. # 251

DATE: JULY, 1974