

**PARTIAL BOUNDARY SURVEYS  
SKIATOOK LAKE  
HOMINY CREEK, OKLAHOMA**

Performed Under Contract Number DACW 56-81-C-0103

SEC 32 T 22 N R 11 E COUNTY OSAGE

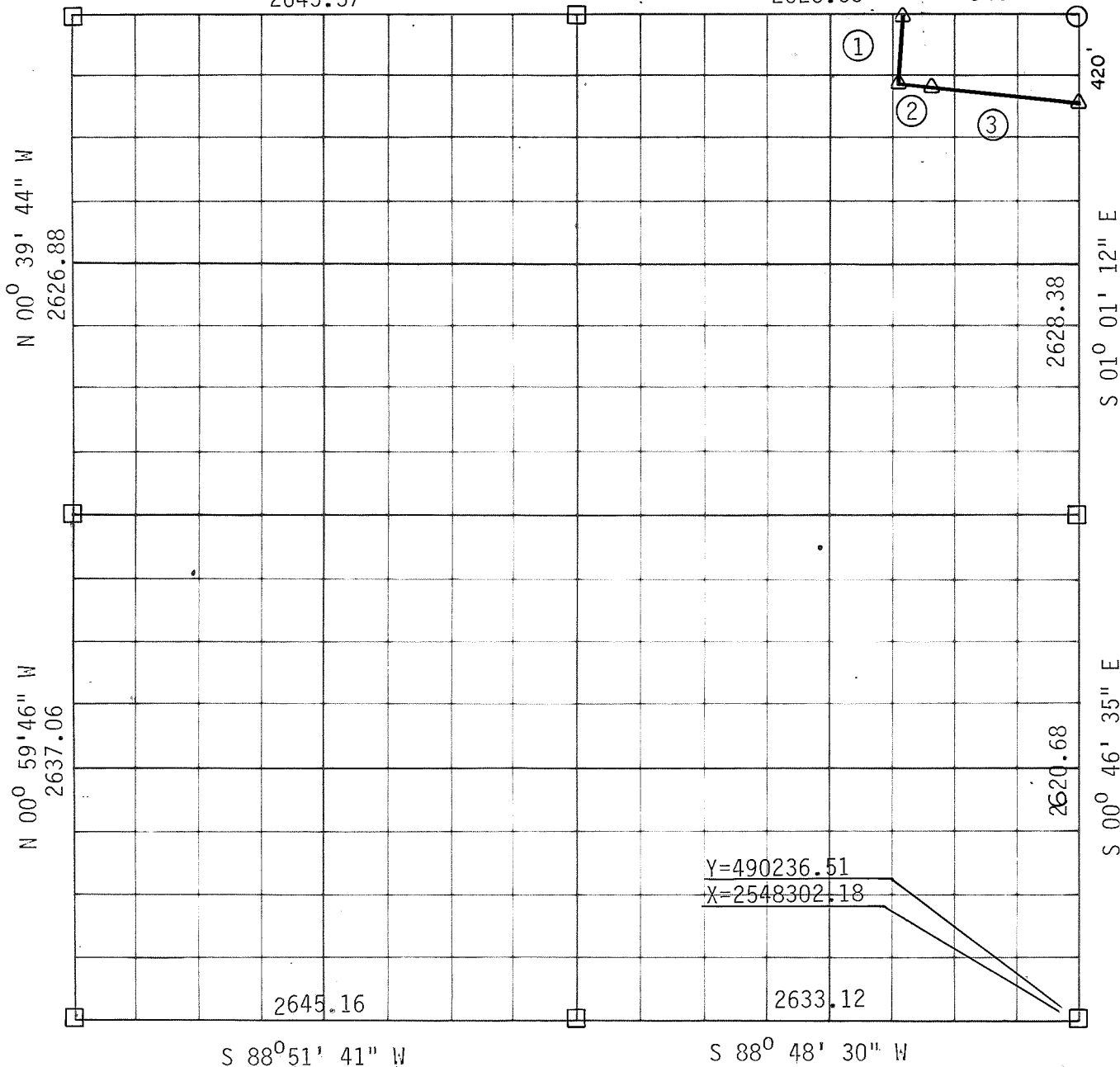
N 89° 03' 28" E

N 88° 56' 04" E

2645.37

2626.53

945'



Course No.	Distance	Bearing	Course No.	Distance	Bearing
1	352.91	S 03° 15' 13" W			
2	150.0	S 87° 03' 19" E			
3	823.74	S 87° 02' 30" E			

CERTIFICATE OF SURVEY Field Book No. 13-215 Date November 1981

I HEREBY CERTIFY THAT THE ABOVE PLAT IS A TRUE AND CORRECT REPRESENTATION OF THE SURVEY MADE IN SECTION 32, T 22 N, R 11 E, OSAGE COUNTY, OKLAHOMA.

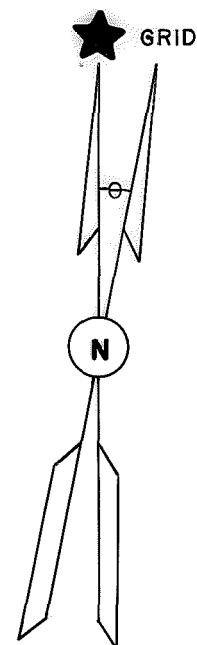
**BREISCH**  
S. 107  
REGISTERED LAND SURVEYOR

**BREISCH ENGINEERING CO. INC.**  
Under the Supervision of  
**U.S. ARMY ENGINEER DISTRICT, TULSA  
CORPS OF ENGINEERS**

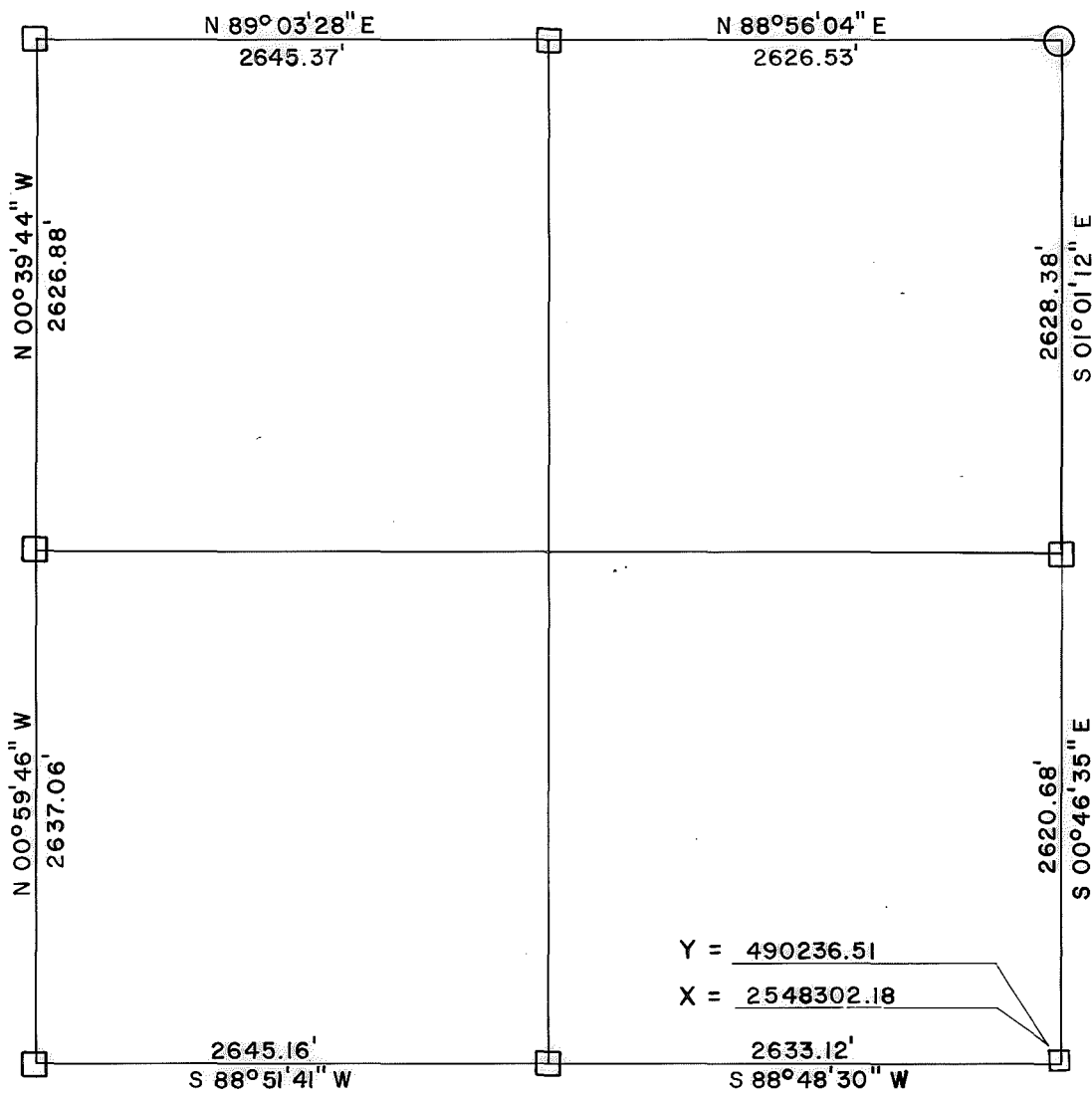
**LEGEND**  
Δ MONUMENT  
□ ORIGINAL CORNER  
○ IRON PIN

# SKIATOOK LAKE AREA HOMINY CREEK, OKLAHOMA SECTION AND QUARTER SECTION CORNER SURVEY

Performed Under Contract Number DACW 56-74-C-0098



$\theta = 01^{\circ}05'54.9''$



### REFERENCES

Scale: 1" = 50'

<p>N. W. CORNER</p>	<p>N. 1/4 CORNER</p>	<p>N. E. CORNER</p>
<p>W 1/4 CORNER</p>	<p>SECTION <u>32</u></p> <p>TOWNSHIP <u>22 N</u></p> <p>RANGE <u>11 E</u></p> <p><b>OSAGE</b></p> <p>COUNTY</p>	<p>E 1/4 CORNER</p>
<p>S. W. CORNER</p>	<p>S. 1/4 CORNER</p>	<p>S. E. CORNER</p>

#### LEGEND

- Monument
- Original Corner
- Iron Pin Set
- Iron Pin Found
- Tele. Pole
- Power Pole
- Fence Post
- Hwy. R/W Marker
- Reference Marker
- Tree

NOTE: Ties are to nail and washer unless otherwise noted.



#### Certificate of Survey

I hereby certify that the above plot is a true and correct representation of the survey of the above section.

Field Book No. 13-215



Under the Supervision of  
US. ARMY ENGINEER  
TULSA DISTRICT  
CORP OF ENGINEERS

*George E. Gilmore*  
REGISTERED LAND SURVEYOR L.S.# 251

DATE: JULY, 1974