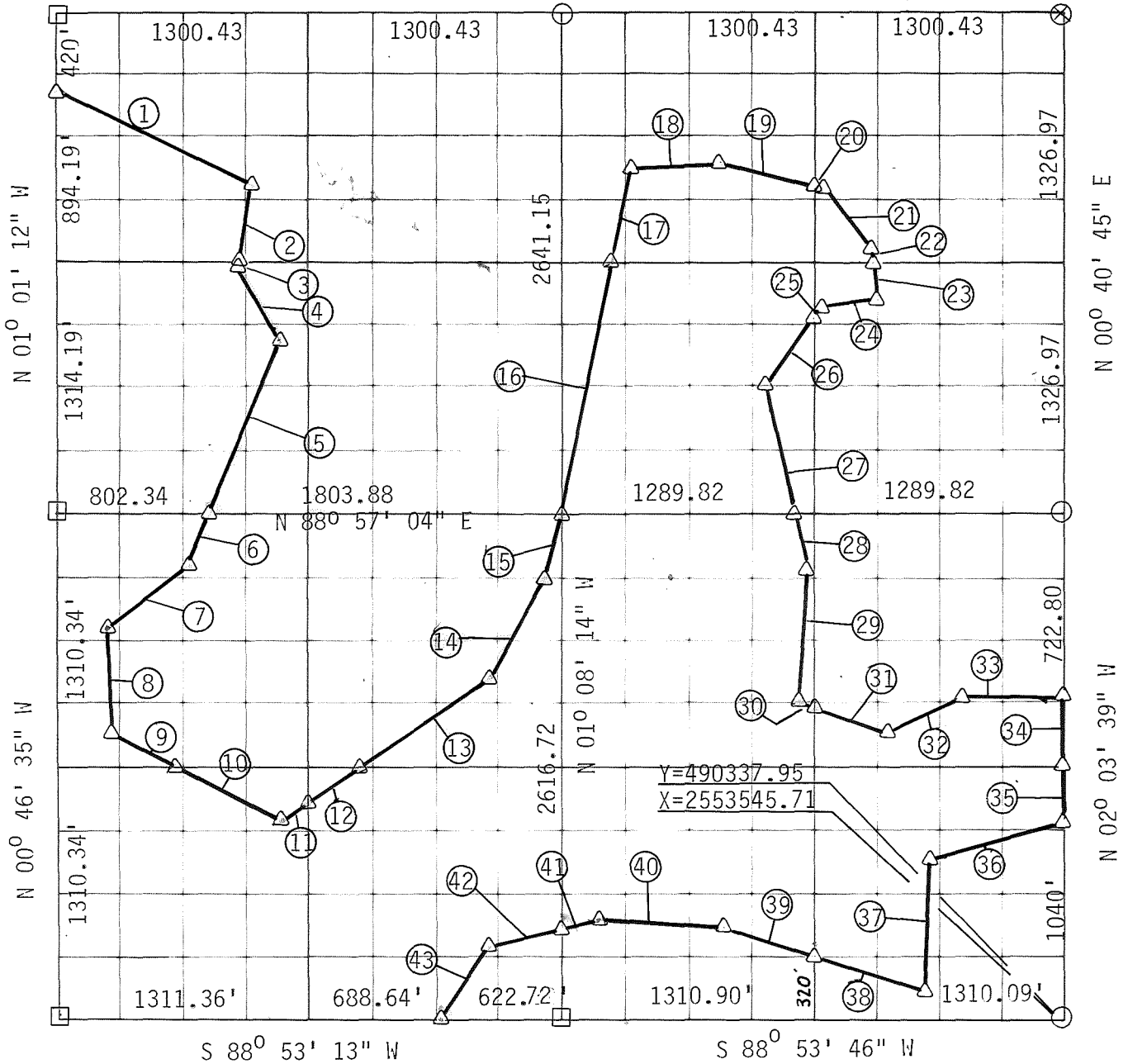


**PARTIAL BOUNDARY SURVEYS  
SKIATOOK LAKE  
HOMINY CREEK, OKLAHOMA**

Performed Under Contract Number DACW 56-81-C-0103

SEC 33 T 22 N R 11 E COUNTY OSAGE  
 N 88° 40' 12" E N 88° 40' 13" E



Course No.	Distance	Bearing	Course No.	Distance	Bearing
1	1143.68	S 65° 43' 00" E	13	825.31	N 54° 51' 57" E
2	407.95	S 08° 02' 09" W	14	566.86	N 30° 11' 01" E
3	21.26	S 08° 02' 09" W	15	386.00	N 19° 16' 30" E
4	438.29	S 27° 08' 59" E	16	1354.36	N 11° 38' 15" E
5	970.30	S 20° 34' 57" W	17	442.96	N 11° 38' 15" E
6	295.50	S 20° 34' 57" W	18	457.74	N 83° 43' 44" E
7	686.22	S 43° 13' 43" W	19	455.43	S 77° 52' 07" E
8	325.96	S 04° 23' 55" E	20	91.79	S 77° 52' 07" E
9	434.31	S 60° 49' 57" E	21	387.10	S 38° 22' 16" E
10	550.58	S 60° 49' 57" E	22	28.98	S 08° 58' 21" E
11	261.21	N 54° 51' 57" E	23	259.55	S 08° 58' 21" E
12	234.09	N 54° 51' 57" E	24	330.49	S 79° 32' 34" W
			25	42.42	S 33° 30' 40" W

CERTIFICATE OF SURVEY Field Book No. 13-216 Date November 1981

I HEREBY CERTIFY THAT THE ABOVE PLAN IS A TRUE AND CORRECT REPRESENTATION OF THE SURVEY MADE IN SECTION 33, T 22 N, R 11 E, OSAGE COUNTY, OKLAHOMA

**BREISCH ENGINEERING CO. INC.**

Under the Supervision of

**U.S. ARMY ENGINEER DISTRICT, TULSA  
CORPS OF ENGINEERS**

**LEGEND**

- ▲ MONUMENT
- ORIGINAL CORNER
- IRON PIN

WILLIAM B. BREISCH  
 REGISTERED LAND SURVEYOR  
 OKLAHOMA

**PARTIAL BOUNDARY SURVEYS  
SKIATOOK LAKE  
HOMINY CREEK , OKLAHOMA**

Performed Under Contract Number **DACW 56- 81 - C - 0103**

**SEC 33      T 22 N      R 11 E      COUNTY OSAGE**


Course No.	Distance	Bearing	Course No.	Distance	Bearing
26	401.34	S 33° 30' 40" W	39	495.24	N 76° 17' 05" W
27	664.93	S 14° 45' 31" E	40	650.94	N 86° 55' 04" W
28	296.80	S 14° 45' 31" E	41	181.42	S 82° 56' 15" W
29	702.57	S 04° 53' 57" W	42	387.90	S 82° 56' 15" W
30	88.92	S 65° 08' 54" E	43	495.43	S 27° 25' 20" W
31	434.55	S 65° 08' 54" E			
32	434.11	N 57° 13' 30" E			
33	537.60	N 89° 21' 40" E			
34	317.00	S 02° 03' 39" E			
35	268.00	S 02° 03' 39" E			
36	682.72	S 69° 12' 45" W			
37	651.92	S 04° 23' 55" W			
38	611.94	S 76° 02' 41" E			

CERTIFICATE OF SURVEY Field Book No. 13-216 Date November 1981

I HEREBY CERTIFY THAT THE ABOVE PLAT IS A TRUE AND CORRECT REPRESENTATION OF THE SURVEY MADE IN SECTION 33, T 22 N, R 11 E, OSAGE COUNTY, OKLAHOMA

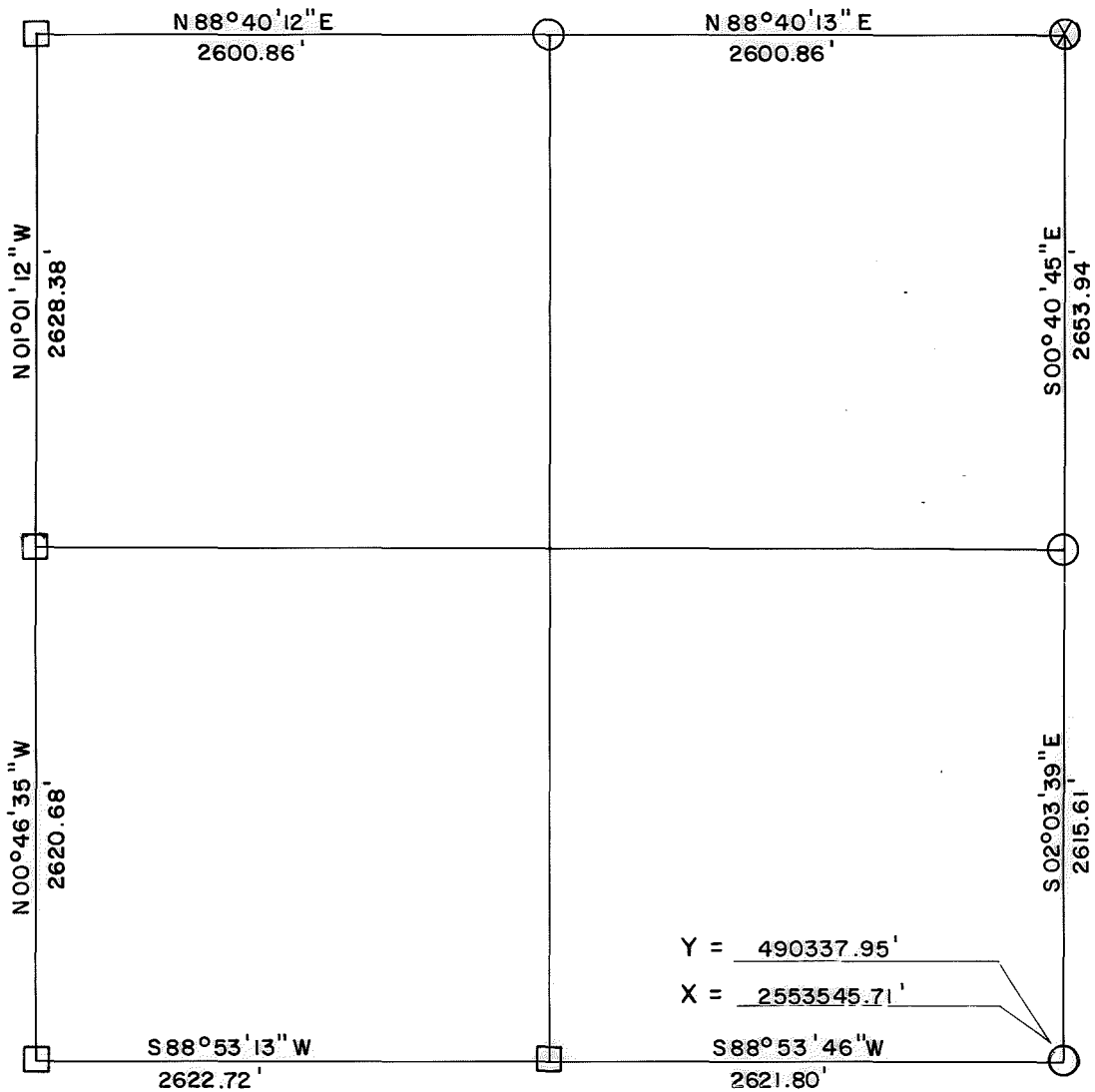
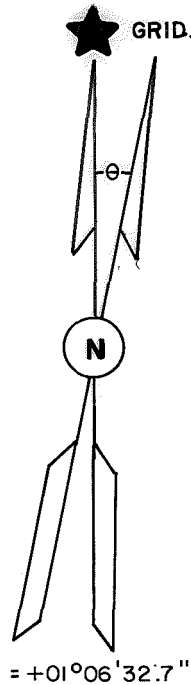
**BREISCH ENGINEERING CO. INC.**  
Under the Supervision of  
**U.S. ARMY ENGINEER DISTRICT, TULSA  
CORPS OF ENGINEERS**

**LEGEND**  
Δ MONUMENT  
□ ORIGINAL CORNER  
○ IRON PIN

**WILLIAM B. BREISCH**  
REGISTERED LAND SURVEYOR  
OKLAHOMA

# SKIATOOK LAKE AREA HOMINY CREEK, OKLAHOMA SECTION AND QUARTER SECTION CORNER SURVEY

Performed Under Contract Number DACW 56-74-C-0098



### REFERENCES

Scale: 1" = 50'

<p>N. W. CORNER</p>	<p>N. 1/4 CORNER</p>	<p>N. E. CORNER</p>
<p>W. 1/4 CORNER</p>	<p>SECTION <u>33</u></p> <p>TOWNSHIP <u>22 N</u></p> <p>RANGE <u>11 E</u></p> <p><u>OSAGE</u> COUNTY</p>	<p>E. 1/4 CORNER</p>
<p>S. W. CORNER</p>	<p>S. 1/4 CORNER</p> <p style="text-align: center;">● IN LAKE</p>	<p>S. E. CORNER</p>

### LEGEND

- △ Monument
- Original Corner
- Iron Pin Set
- Iron Pin Found
- Tele. Pole
- Power Pole
- ⊗ Fence Post
- Hwy. R/W Marker
- Reference Marker
- ☁ Tree

NOTE: Ties are to nail and washer unless otherwise noted.



### Certificate of Survey

I hereby certify that the above plat is a true and correct representation of the survey of the above section.

Field Book No. 13-216



Under the Supervision of  
US. ARMY ENGINEER  
TULSA DISTRICT  
CORP OF ENGINEERS

*George E. Gilmore*  
REGISTERED LAND SURVEYOR L.S. # 251

DATE: July, 1974