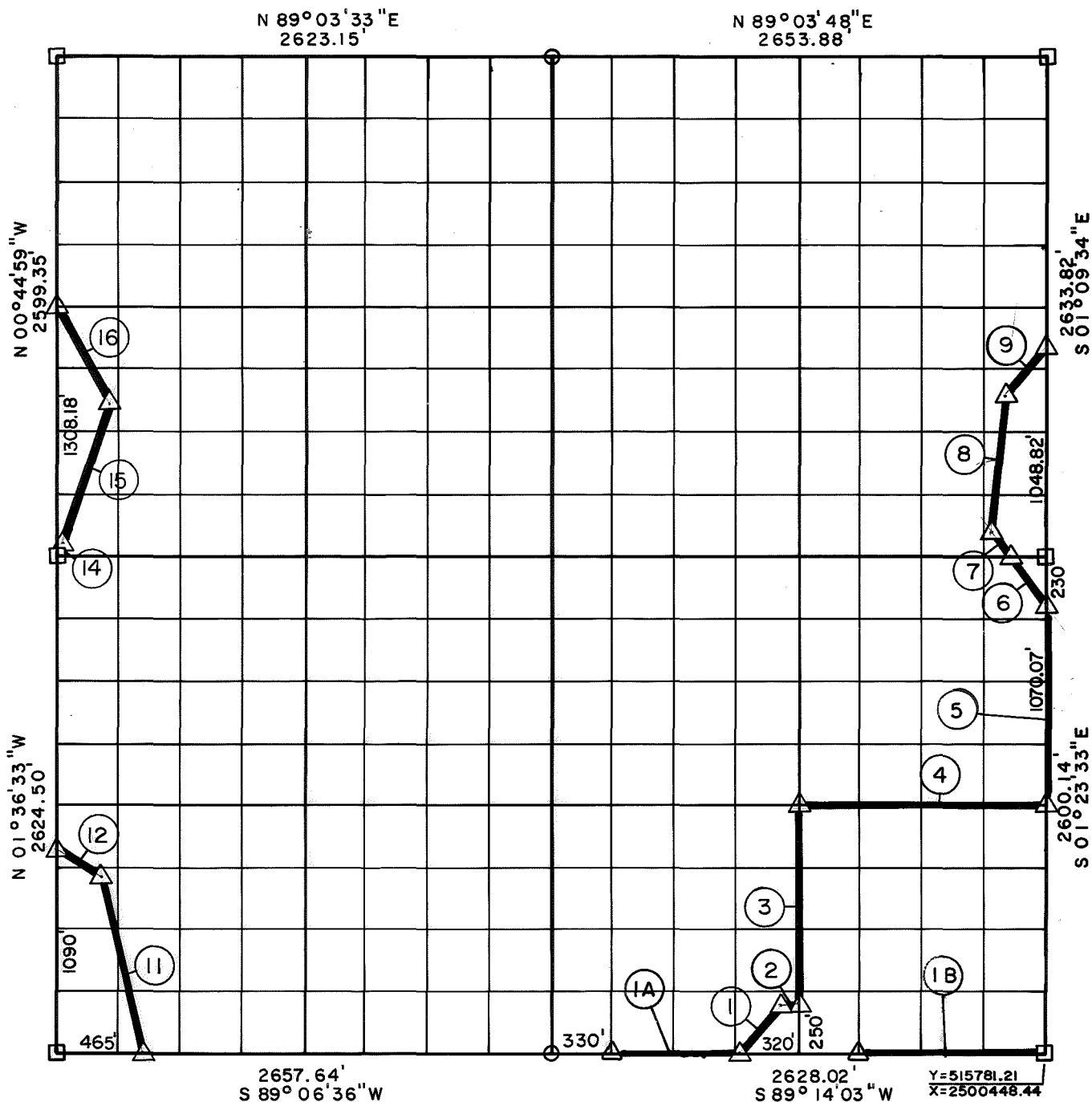


PARTIAL BOUNDARY SURVEYS
SKIATOOK LAKE
HOMINY CREEK, OKLAHOMA

Performed Under Contract Number DACW 56-81-C-0104

SEC. 2, T. 22N, R. 9 E, COUNTY OSAGE



Course No.	Distance	Bearing	Course No.	Distance	Bearing
1	333.97'	N 41° 22' 11" E	5	1070.07'	N 01° 23' 33" W
2	92.87'	N 87° 48' 05" E	1A	664.01'	N 89° 14' 03" E
3	1052.39'	N 01° 28' 34" W	1B	954.0	N 89° 14' 03" E
4	1315.94'	N 89° 20' 04" E			
6	282.55'	N 36° 05' 02" W			
7	168.30'	N 36° 05' 02" E			
8	734.37'	N 06° 15' 15" E			
9	243.14'	N 40° 45' 12" E			
11	977.57'	N 12° 53' 03" W			
12	306.25'	N 65° 00' 26" W			
14	64.22'	N 18° 46' 00" E			
15	800.00'	N 18° 57' 54" E			
16	573.97'	N 31° 15' 04" W			

CERTIFICATE OF SURVEY LA 660 Book No. 13-270 Date Dec., 1981

I Herby Certify That The Above Plat Is A True And Correct Representation Of The Survey Made Of Section 2, T. 22 N, R. 9 E.

BASIL E. SCOTT, JR.
L.S. 545

SCOTT & ASSOCIATES, INC.

Engineering & Surveying

For

U.S. ARMY ENGINEER DISTRICT, TULSA

CORPS OF ENGINEERS

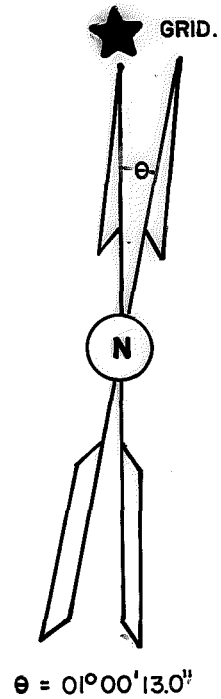
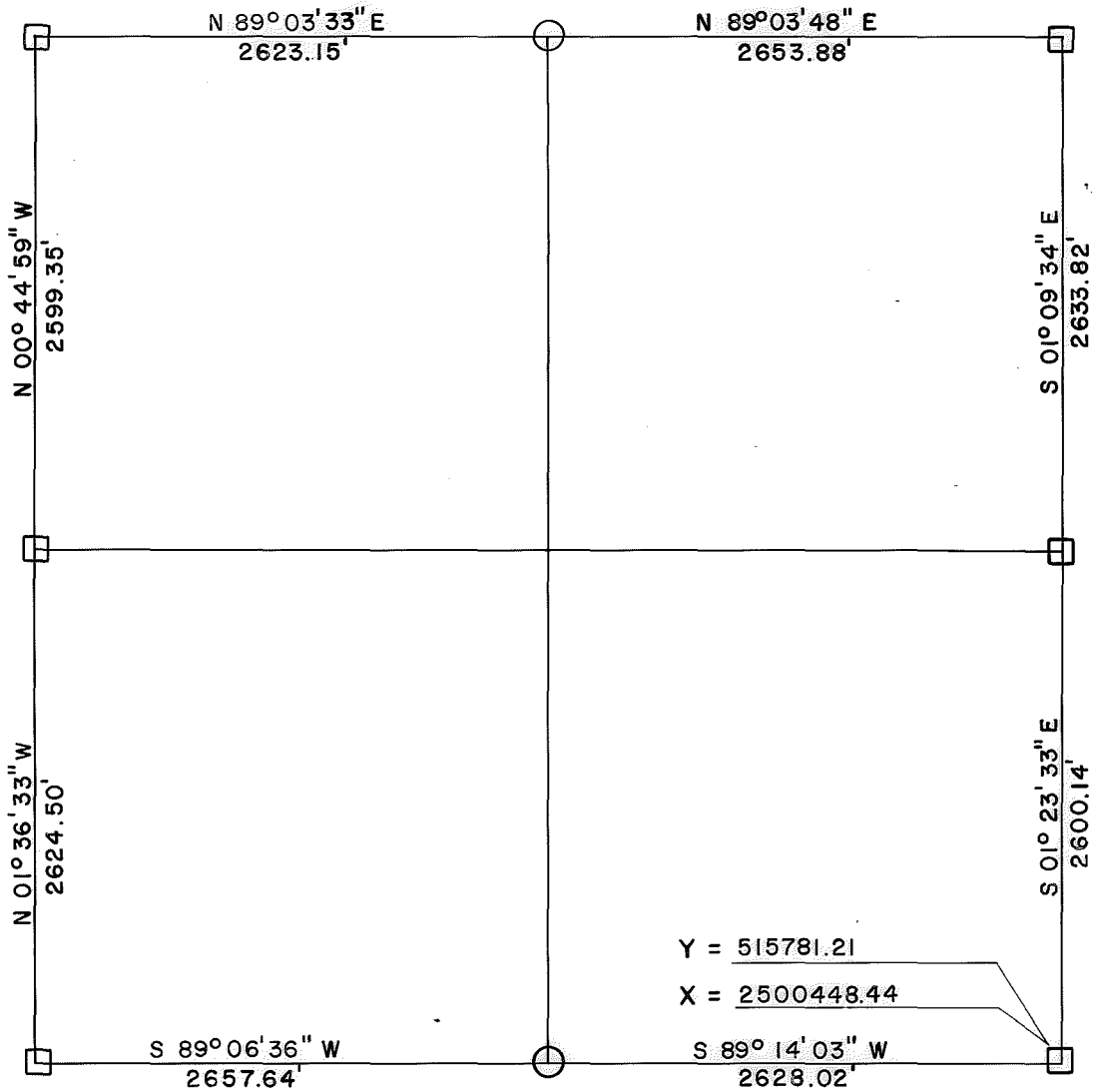
- △ MONUMENT
- ORIGINAL CORNER
- IRON PIN

Basil E. Scott, Jr. L.S. No. 545

SHEET 1 of 1

**SKIATOOK LAKE AREA
HOMINY CREEK, OKLAHOMA
SECTION AND QUARTER SECTION CORNER SURVEY**

Performed Under Contract Number DACW 56-74-C-0098

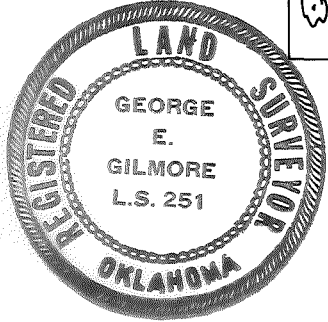


REFERENCES

Scale: 1" = 50'

<p align="center">N. W. CORNER</p>	<p align="center">N. 1/4 CORNER</p>	<p align="center">N. E. CORNER</p>
<p align="center">W. 1/4 CORNER</p>	<p>SECTION <u>2</u></p> <p>TOWNSHIP <u>22 N</u></p> <p>RANGE <u>9 E</u></p> <p align="center"><u>OSAGE</u> COUNTY</p>	<p align="center">E 1/4 CORNER</p>
<p align="center">S. W. CORNER</p>	<p align="center">S. 1/4 CORNER</p>	<p align="center">S. E. CORNER</p>

- LEGEND**
- △ Monument
 - Original Corner
 - Iron Pin Set
 - Iron Pin Found
 - Tele. Pole
 - Power Pole
 - ⊗ Fence Post
 - ▣ Hwy. R/W Marker
 - Reference Marker
 - Tree
- NOTE: Ties are to nail and washer unless otherwise noted.



Certificate of Survey
I hereby certify that the above plat is a true and correct representation of the survey of the above section.

Field Book No. 13-270



Under the Supervision of
U.S. ARMY ENGINEER
TULSA DISTRICT
CORP OF ENGINEERS

George E. Gilmore
REGISTERED LAND SURVEYOR L.S. # 251

DATE: Aug. 1974