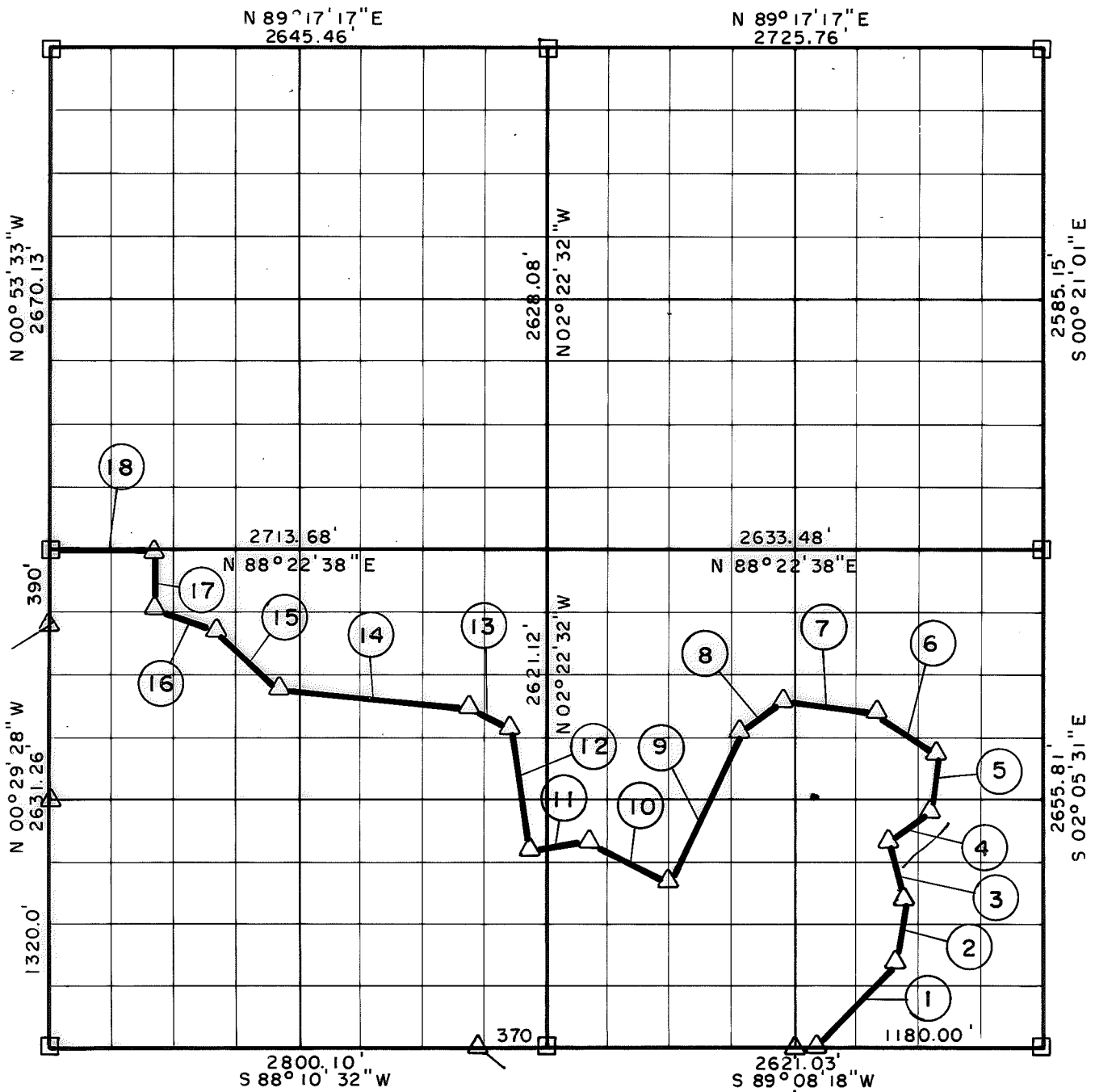


PARTIAL BOUNDARY SURVEYS  
SKIATOOK LAKE  
HOMINY CREEK, OKLAHOMA

Performed Under Contract Number DACW 56-78-C-0092

SEC. 22, T. 23 N., R. 10 E., COUNTY OSAGE



Course No.	Distance	Bearing	Course No.	Distance	Bearing
1	635.22'	N 37° 54' 55" E	14	1049.77'	N 84° 32' 02" W
2	342.24'	N 11° 48' 09" E	15	425.21'	N 41° 11' 09" W
3	314.84'	N 20° 26' 58" W	16	338.42'	N 77° 11' 45" W
4	262.15'	N 55° 05' 51" E	17	252.35'	N 37° 14' 01" W
5	296.06'	N 04° 50' 38" E	18	590.00'	S 88° 22' 38" W
6	345.14'	N 51° 28' 11" W			
7	506.36'	N 80° 54' 35" W			
8	337.12'	S 54° 39' 36" W			
9	845.81'	S 24° 26' 38" W			
10	480.88'	N 64° 46' 02" W			
11	284.43'	S 79° 52' 31" W			
12	687.70'	N 13° 01' 33" W			
13	219.54'	N 59° 55' 53" W			

Field Book No. 13-225 Date Sept., 1978

CERTIFICATE OF SURVEY

**CRAIG & KEITHLINE**  
Consulting Engineers

For

U.S. ARMY ENGINEER DISTRICT, TULSA  
CORPS OF ENGINEERS

Δ MONUMENT  
□ ORIGINAL CORNER  
○ IRON PIN

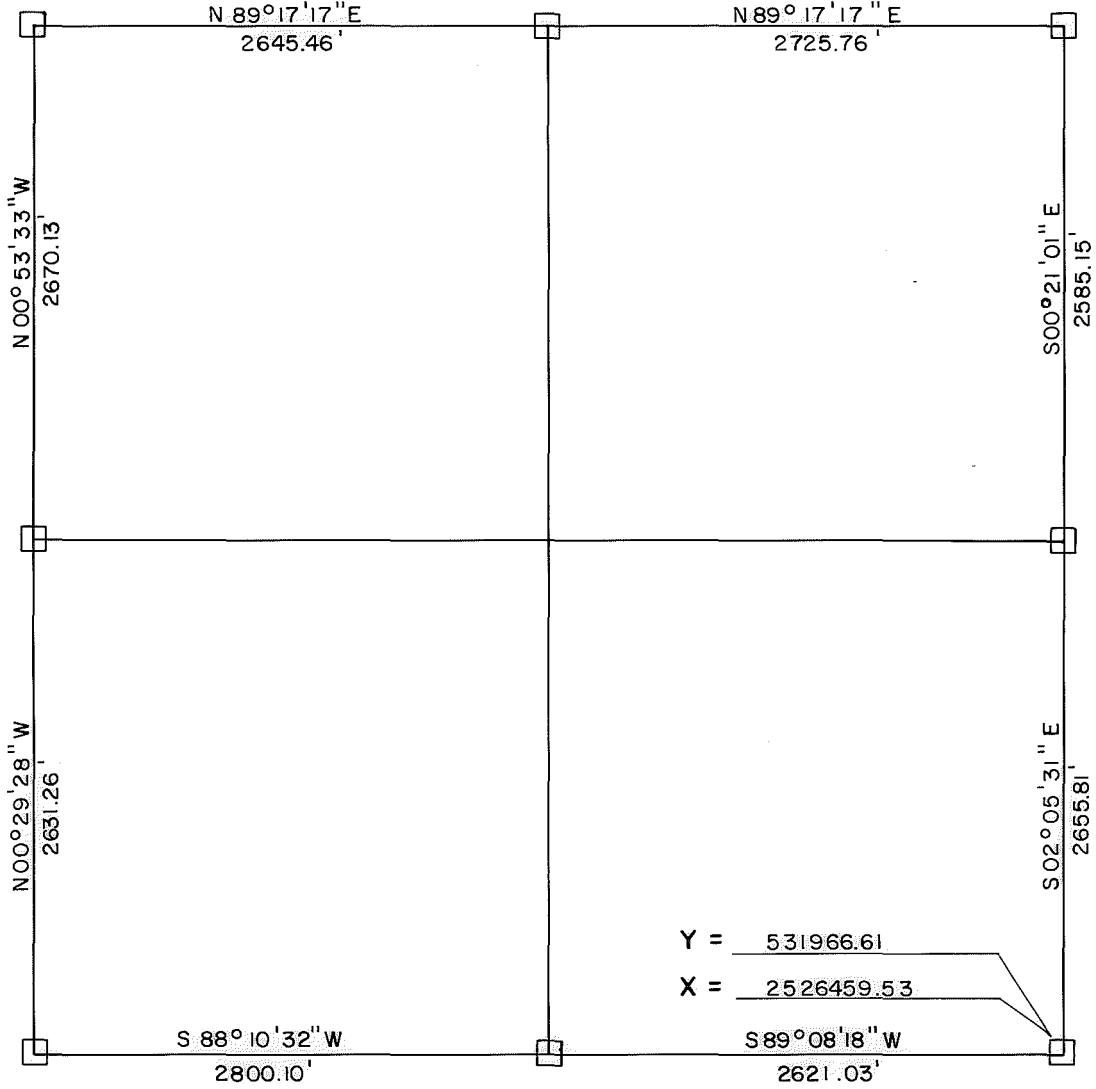
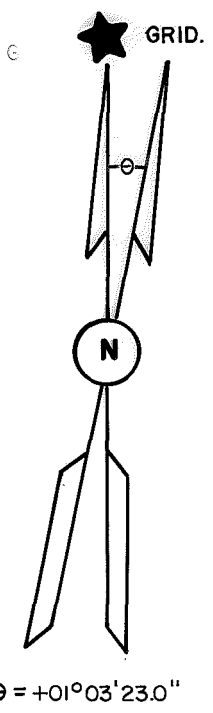
SHEET 1 of 1

I hereby certify that the above plat is a true and correct representation of the survey made in accordance with the laws of Oklahoma.

**REGISTERED LAND SURVEYOR**  
JIMMIE DOLE NICKLE  
No. 78

# SKIATOOK LAKE AREA HOMINY CREEK, OKLAHOMA SECTION AND QUARTER SECTION CORNER SURVEY

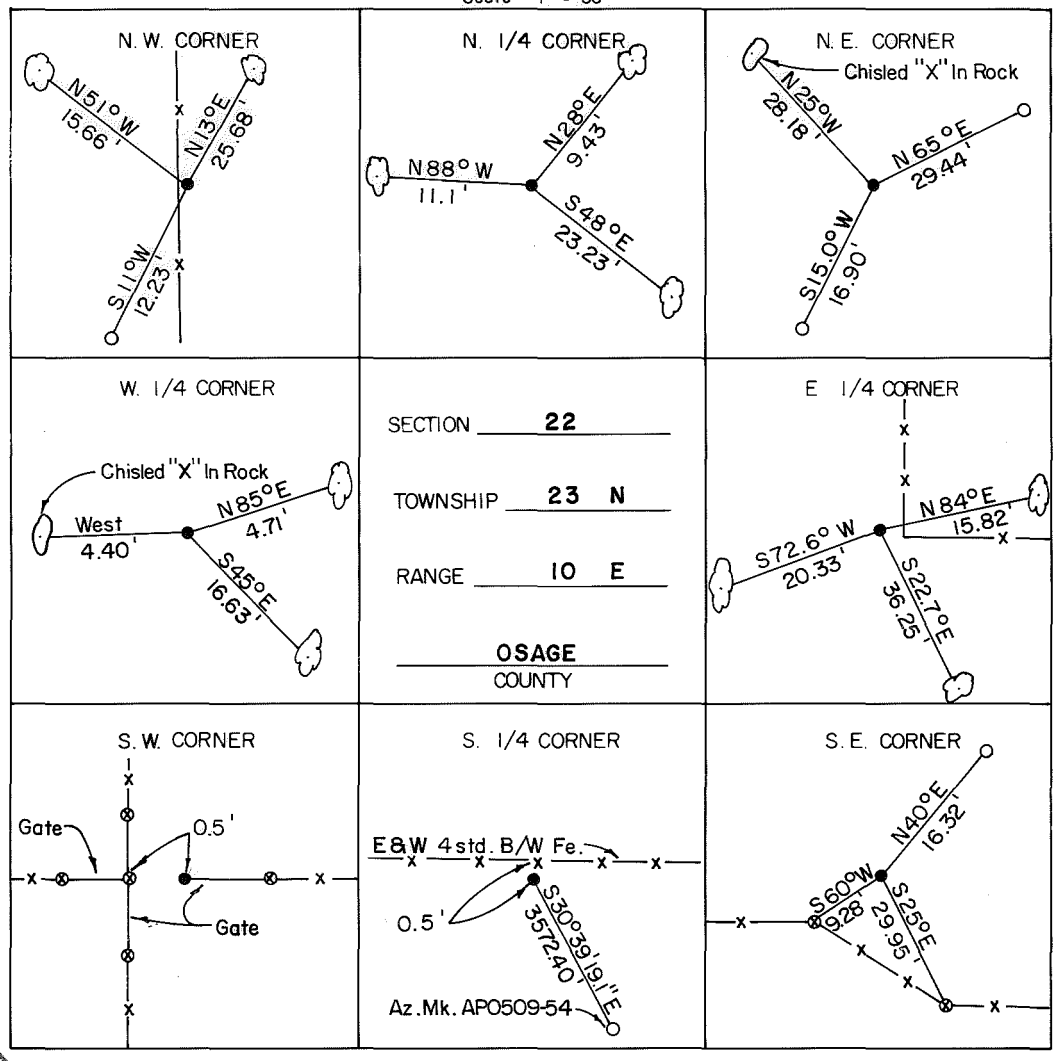
Performed Under Contract Number DACW 56-74-C-0098



Y = 531966.61  
X = 2526459.53

### REFERENCES

Scale: 1" = 50'



- LEGEND**
- △ Monument
  - Original Corner
  - Iron Pin Set
  - Iron Pin Found
  - Tele. Pole
  - Power Pole
  - ⊗ Fence Post
  - Hwy. R/W Marker
  - Reference Marker
  - Tree

NOTE: Ties are to nail and washer unless otherwise noted.

**Certificate of Survey**

I hereby certify that the above plat is a true and correct representation of the survey of the above section.

Field Book No. 13-225

Under the Supervision of  
U.S. ARMY ENGINEER  
TULSA DISTRICT  
CORP OF ENGINEERS



*George E. Gilmore*  
REGISTERED LAND SURVEYOR L.S. # 251

DATE: July 1974