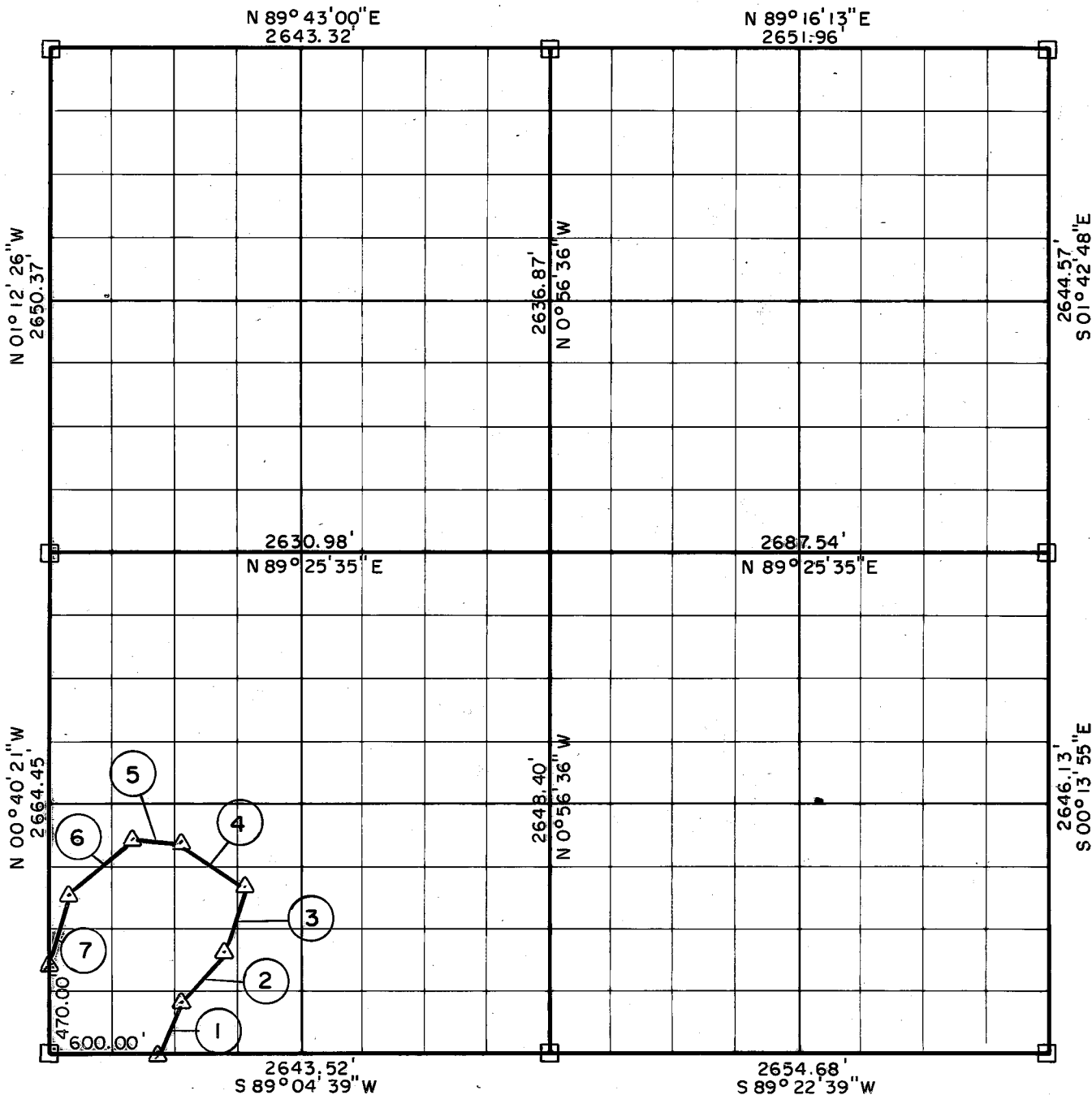


PARTIAL BOUNDARY SURVEYS
SKIATOOK LAKE
HOMINY CREEK, OKLAHOMA

Performed Under Contract Number DACW 56-78-C-0092

SEC. 26 , T. 23 N. , R. 10 E. , COUNTY OSAGE



Course No.	Distance	Bearing
1	314.06'	N 15° 24' 12" E
2	360.69'	N 46° 07' 24" E
3	357.95'	N 12° 05' 41" E
4	388.49'	N 58° 09' 03" W
5	250.45'	N 86° 33' 59" W
6	425.73'	S 49° 45' 49" W
7	405.29'	S 17° 03' 12" W

Course No.	Distance	Bearing

Field Book No. 13-227 Date Sept., 1978

CERTIFICATE OF SURVEY

CRAIG & KEITHLINE
Consulting Engineers

For

U.S. ARMY ENGINEER DISTRICT, TULSA
CORPS OF ENGINEERS

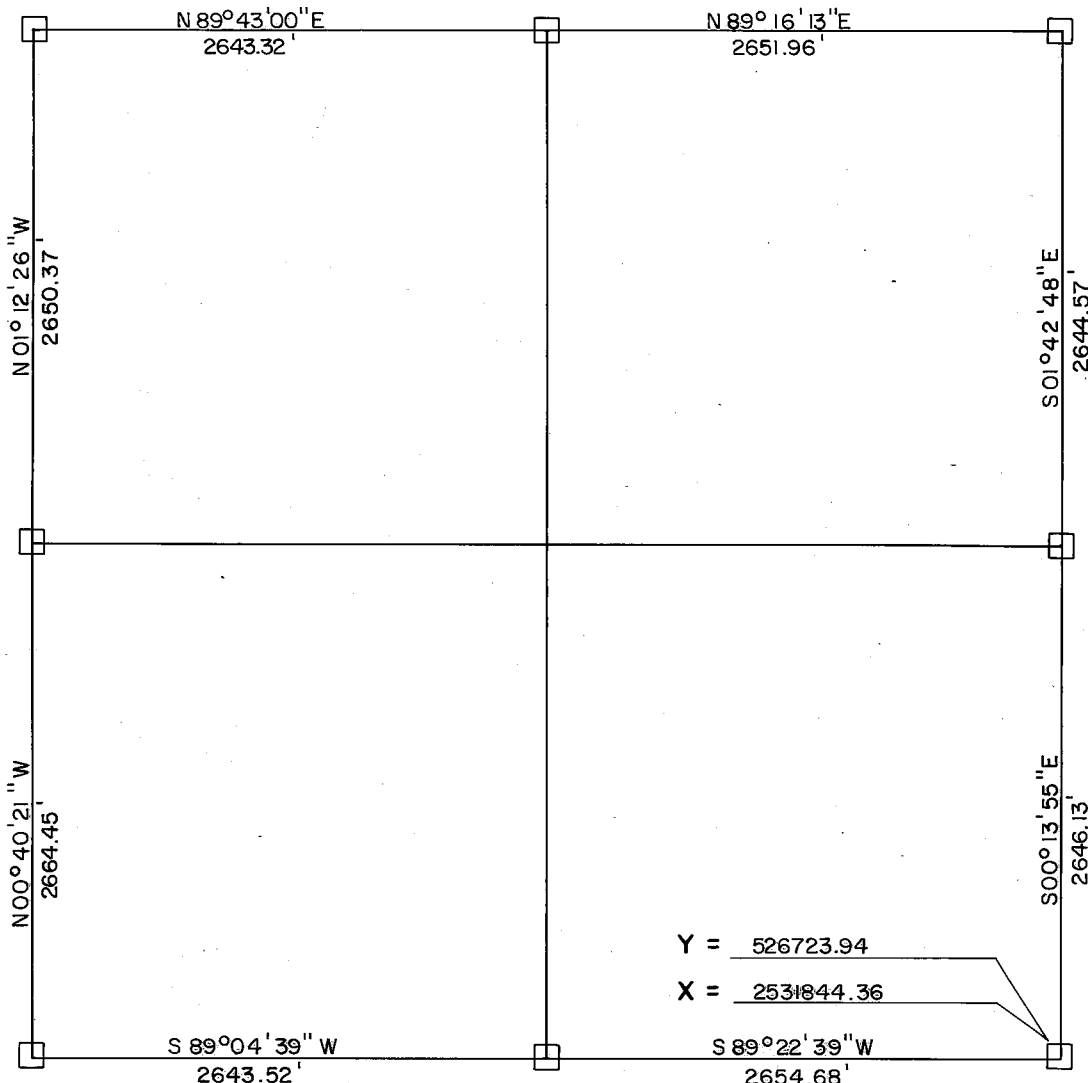
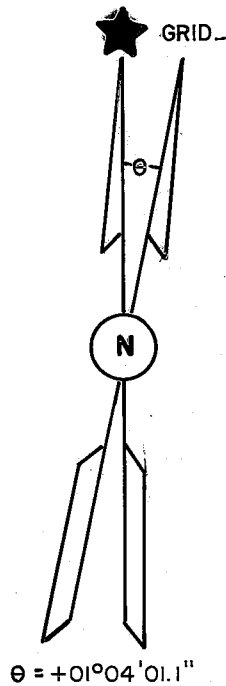
Δ MONUMENT
□ ORIGINAL CORNER
○ IRON PIN

SHEET 1 of 1

I hereby certify that the above is a true and correct representation of the land surveyed in the name of DALE NICKLE of OSAGE County, Oklahoma, by James Dale Nickle Registered Professional Surveyor No. 78

SKIATOOK LAKE AREA HOMINY CREEK, OKLAHOMA SECTION AND QUARTER SECTION CORNER SURVEY

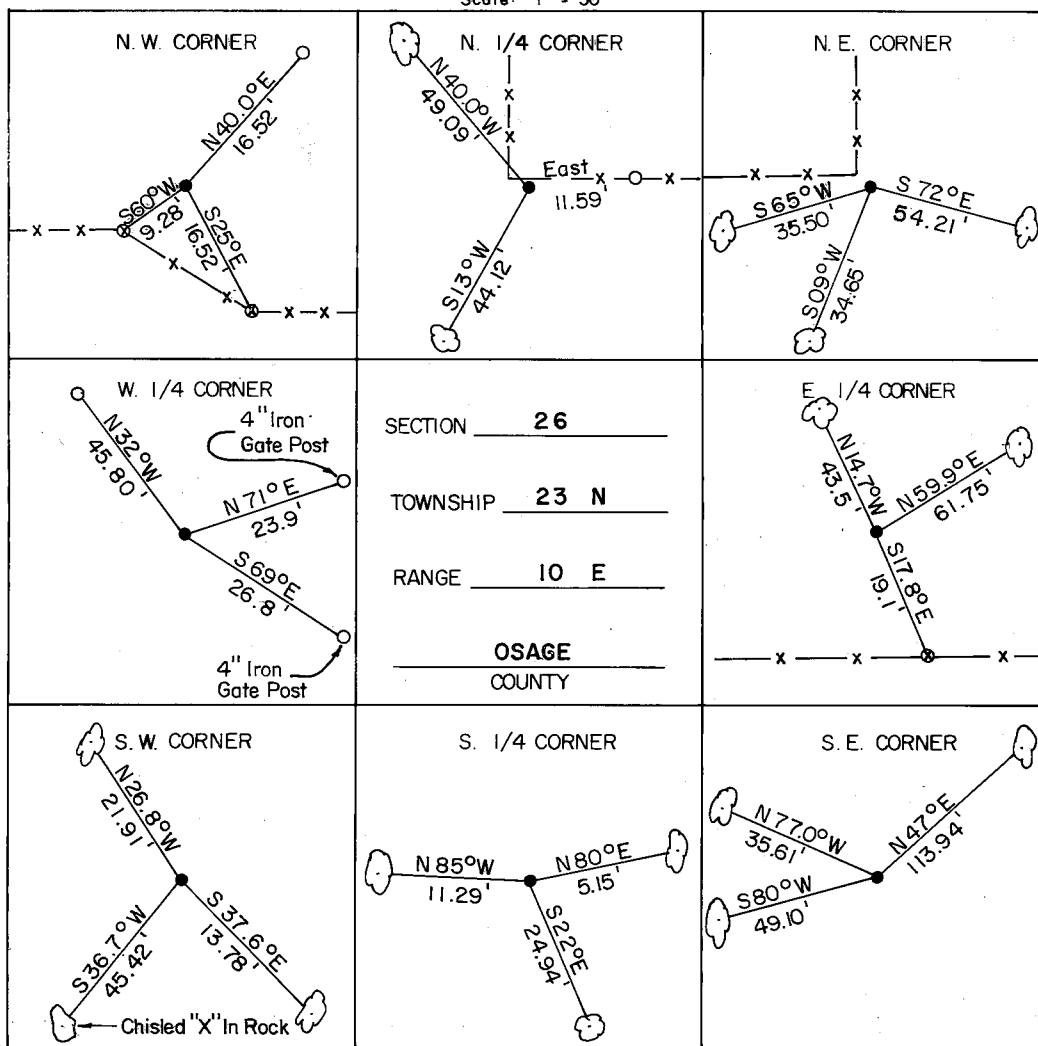
Performed Under Contract Number DACW 56-74-C-0098



Y = 526723.94
X = 2531844.36

REFERENCES

Scale: 1" = 50'



LEGEND

- △ Monument
- Original Corner
- Iron Pin Set
- Iron Pin Found
- Tele. Pole
- Power Pole
- ⊗ Fence Post
- Hwy. R/W Marker
- Reference Marker
- ☉ Tree

NOTE: Ties are to nail and washer unless otherwise noted.



Certificate of Survey

I hereby certify that the above plat is a true and correct representation of the survey of the above section.

Field Book No. 13-227



Under the Supervision of
US. ARMY ENGINEER
TULSA DISTRICT
CORP OF ENGINEERS

George E. Gilmore
REGISTERED LAND SURVEYOR L.S. # 251

DATE: July 1974