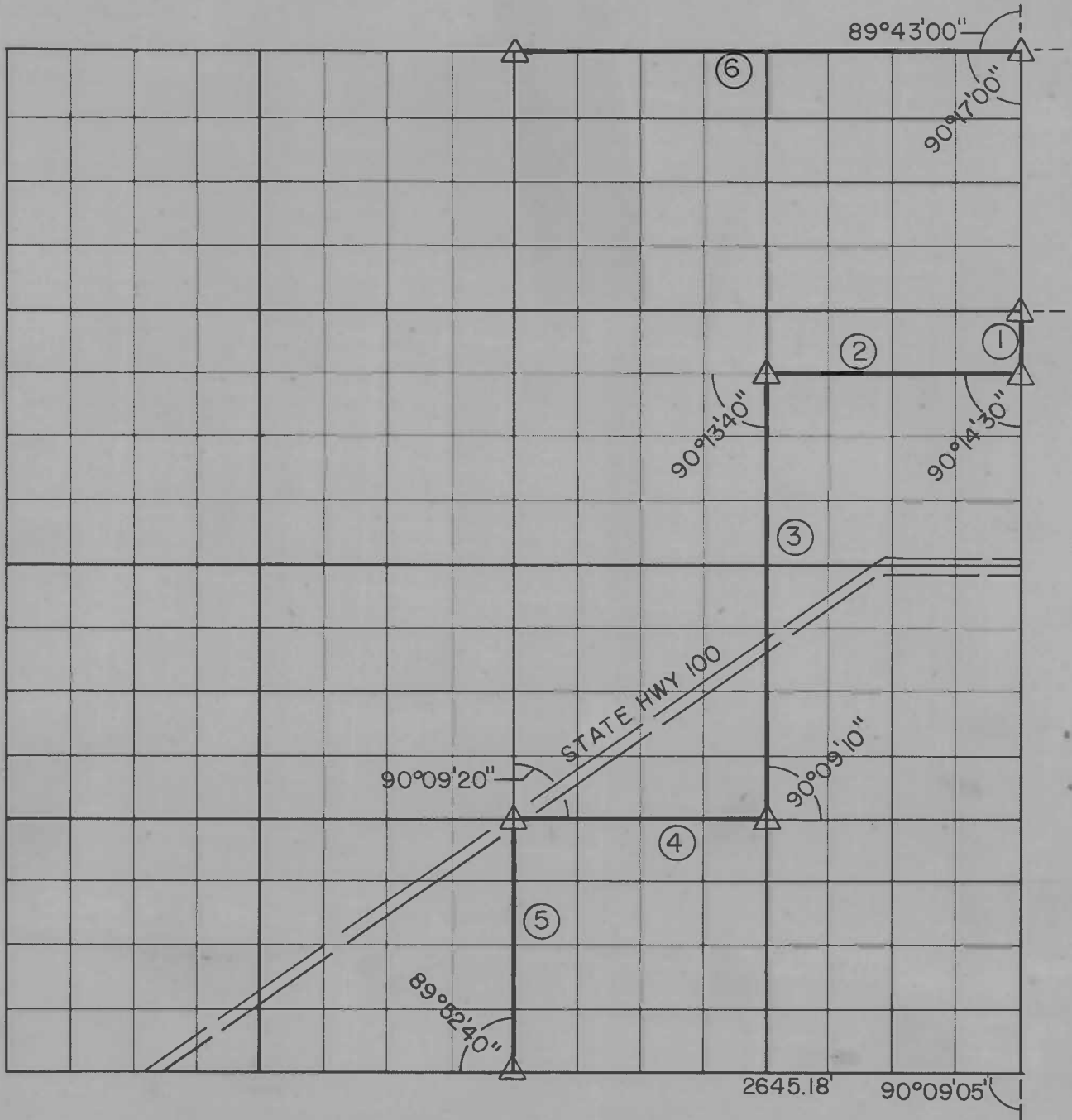


**PARTIAL BOUNDARY SURVEYS
TENKILLER LAKE**

Performed Under Contract Number DACW 56-85-C-1028

SEC. 13 , T - 13 - N , R - 21 - E COUNTY SEQUOYAH



Course No.	Distance	Bearing	Course No.	Distance	Bearing
1	329.59				
2	1321.72				
3	2306.83				
4	1320.14				
5	1319.88				
6	2642.64				

Field Book No. 4-171 Date APR. 1951, OCT. 1982

PLAT REPRESENTS DATA AS SUPPLIED BY THE U.S. ARMY CORPS OF ENGINEERS. PREPARED OCTOBER 1986 BY CUNNINGHAM DAVIS - STOLDT, Inc., TULSA, OK.

Under the Supervision of
**U.S. ARMY ENGINEER DISTRICT, TULSA
CORPS OF ENGINEERS**

LEGEND
 Δ MONUMENT
 □ ORIGINAL CORNER
 ○ IRON PIN
 * COMPUTED DISTANCE