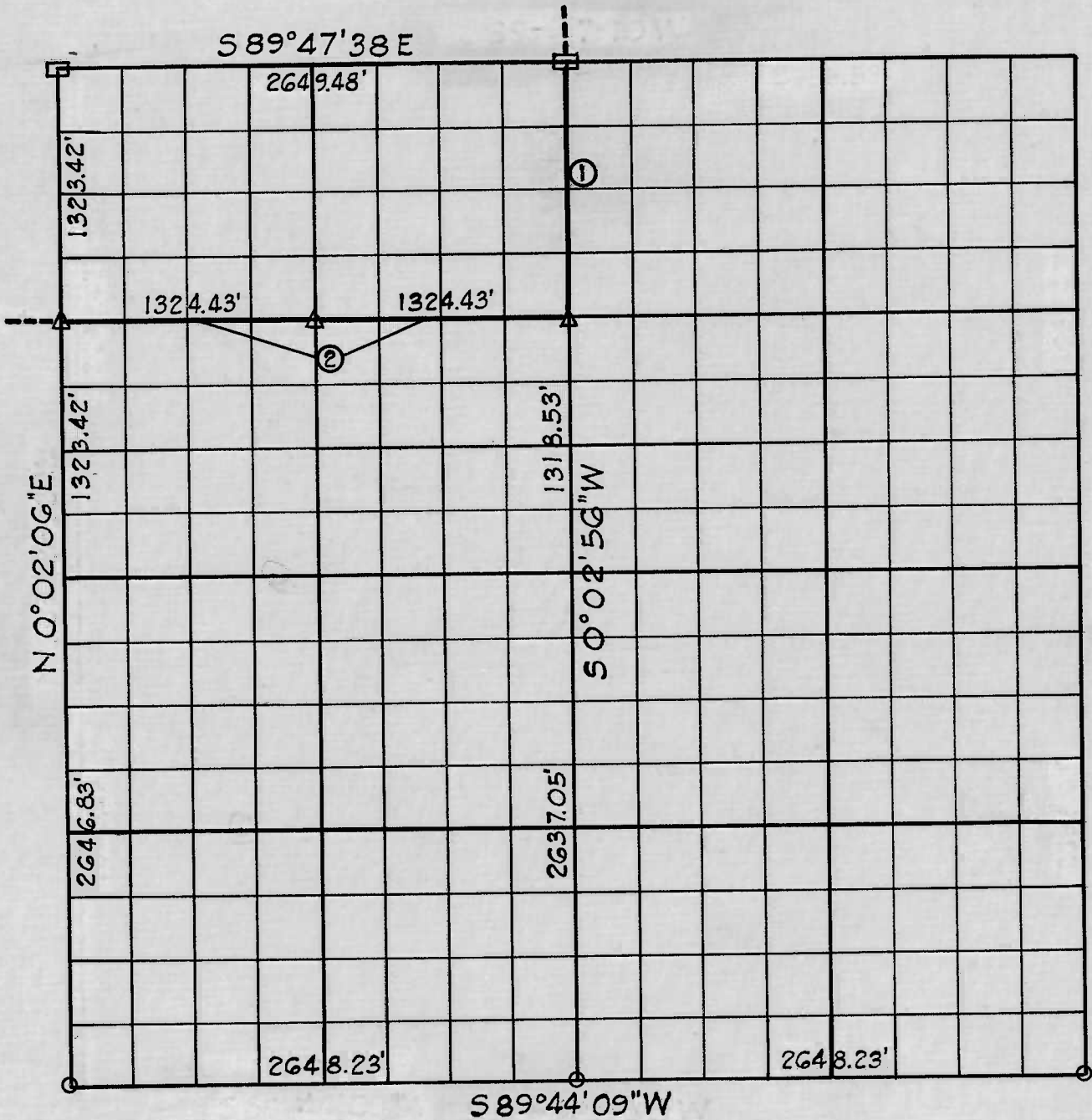


SEC. 25 T. 13 N. R. 21 E COUNTY SEQUOYAH



Course Number	Distance	Bearing	Course Number	Distance	Bearing
1	1318.53	S 0° 02' 56" W			
2	2648.86	N 89° 54' 41" W			

Book No. 4-269 Date: June, 1970

I, Charles J. Finklea, a Registered Land Surveyor, do hereby certify that the above plat is a true and accurate survey of Sec. 25, T 13 N, R 21 E, as made under my supervision.



- LEGEND**
- △ Monument
 - Original Stone
 - Iron Pin

Charles J. Finklea
 Charles J. Finklea
 Registered Land Surveyor No. 35