

45504^c

PARTIAL BOUNDARY SURVEYS
TENKILLER FERRY LAKE
ILLINOIS RIVER, OKLAHOMA

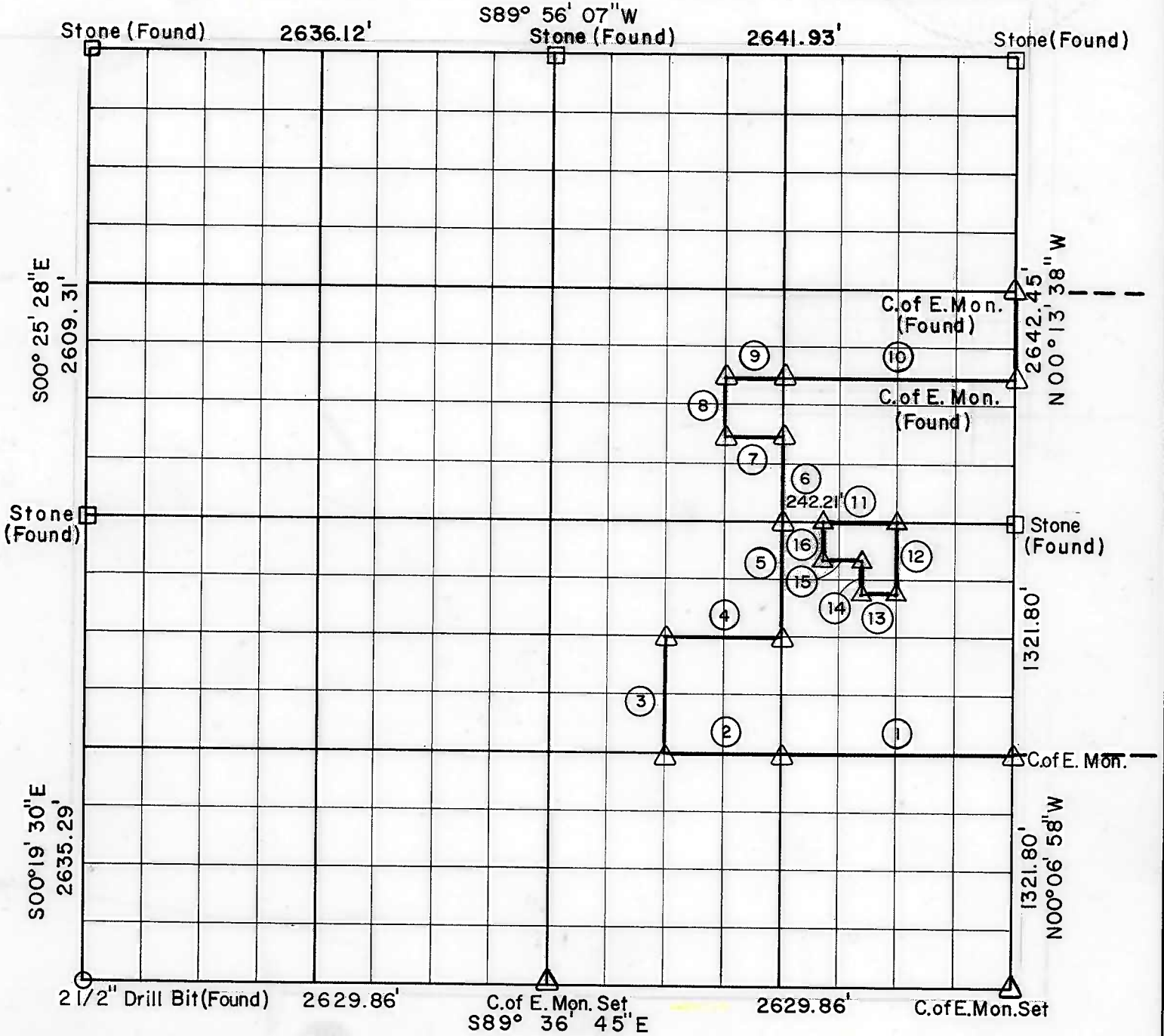
Performed Under Contract Number DACW 56-77-C-0080

STATE OF OKLAHOMA
COUNTY OF SEQUOYAH
This instrument was filed for record
the County Clerks Office

JUN 29 1977

At 1 O'clock P M., and is Recorded in
Book No. 425 Page No. 508
By MAYME LILLARD, County Clerk
Deputy

SEC. 4 , T - 13 - N , R - 21 - E COUNTY SEQUOYAH



Course No.	Distance	Bearing	Course No.	Distance	Bearing
1	1317.09	N89° 39' 30" W	11	417.42	N89° 42' 14" W
2	658.54	N89° 39' 30" W	12	417.42	S00° 09' 58" E
3	660.13	N00° 15' 26" W	13	208.71	N89° 42' 14" W
4	659.08	S89° 40' 52" E	14	208.71	N00° 09' 58" W
5	660.38	N00° 12' 36" W	15	208.71	N89° 42' 14" W
6	493.02	N00° 15' 56" W	16	208.71	N00° 09' 58" W
7	329.89	N89° 46' 18" W			
8	329.01	N00° 16' 31" W			
9	329.94	S89° 49' 01" E			
10	1319.78	S89° 49' 01" E			
Note: CSES 11-16 Surveyed by Briesch & Assoc. 1982					

Field Book No. 4-313 Date June 17, 1977

CERTIFICATE OF SURVEY

HEREBY CERTIFY THAT THE ABOVE PLAT IS A TRUE AND CORRECT REPRESENTATION OF THE SURVEY MADE IN SECTION 4 , T 13 N , R 21 E , SEQUOYAH COUNTY, OKLAHOMA.



BUTLER ASSOCIATES, INC.

Under the Supervision of

U.S. ARMY ENGINEER DISTRICT, TULSA
CORPS OF ENGINEERS

LEGEND

- △ MONUMENT
- ORIGINAL CORNER
- IRON PIN
- * COMPUTED DISTANCE

Eugene R. Janway
REGISTERED LAND SURVEYOR L.S. No. 246

SHEET 1 of 2

455052

TENKILLER FERRY LAKE ILLINOIS RIVER, OKLAHOMA

STATE OF OKLAHOMA
COUNTY OF SEQUOYAH
This instrument was filed for record in
the County Clerks Office

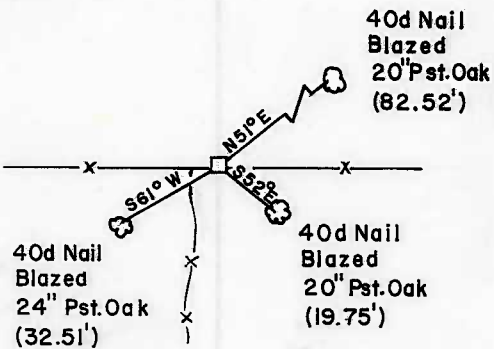
SECTION AND QUARTER SECTION CORNER REFERENCES FOR

JUN 29 1977

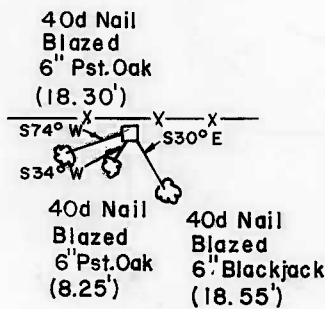
At 1 O'clock P M., and is Recorded in
Book No. 425 Page No. 209
By MAYME LILLARD, County Clerk
Deputy

SEC. 4, T 13 N, R-21 E CHEROKEE COUNTY

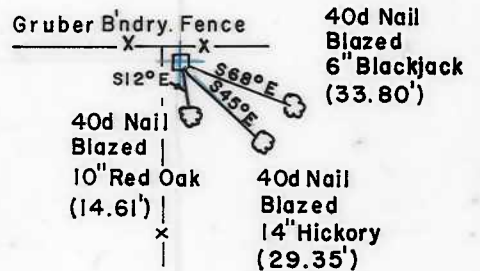
N.W. CORNER



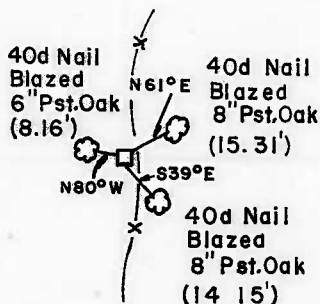
NORTH 1/4 CORNER



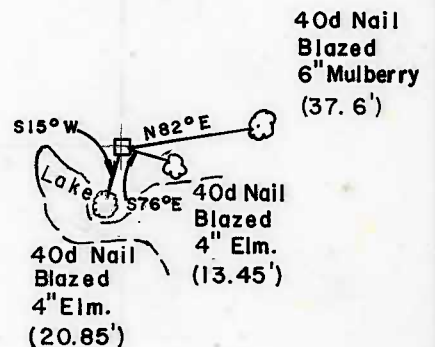
N.E. CORNER



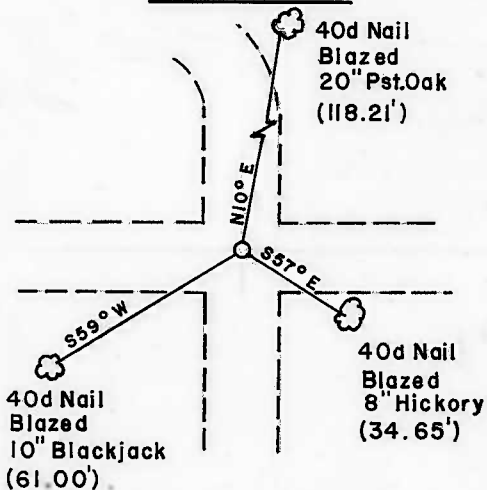
WEST 1/4 CORNER



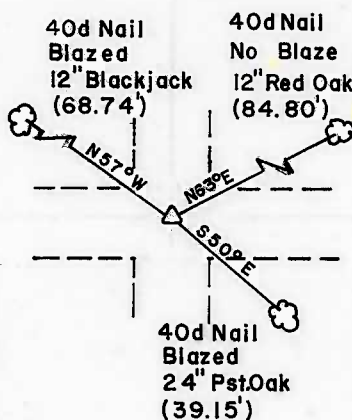
EAST 1/4 CORNER



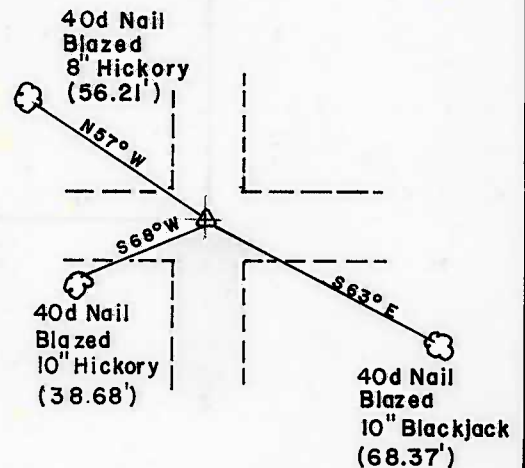
S.W. CORNER



SOUTH 1/4 CORNER



S.E. CORNER



BUTLER ASSOCIATES, INC.

Scale: 1" = 50'
Date: JUNE 1977
Field Book No. 4-313

LEGEND

- △ Monument
- Original Corner
- Iron Pin

Eugene R. Janway
Registered Land Surveyor L.S. No. 246