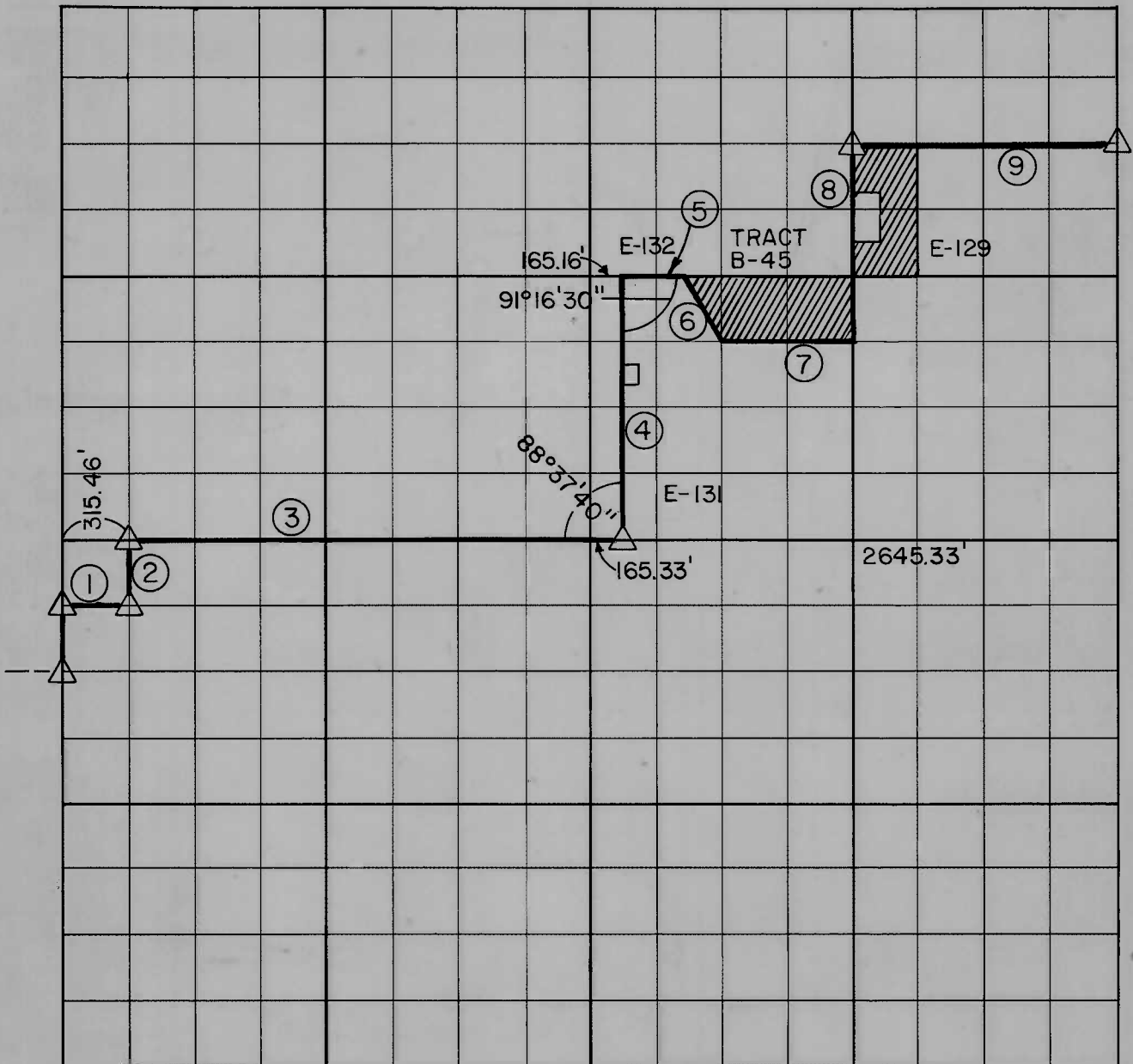


# PARTIAL BOUNDARY SURVEYS TENKILLER LAKE

Performed Under Contract Number DACW 56-85-C-1028

SEC. 6 , T - 13 - N , R - 22 - E COUNTY SEQUOYAH



Course No.	Distance	Bearing	Course No.	Distance	Bearing
1	313.98	N 89°17'30" E			
2	329.89	N 00°15'30" E			
3	2479.81	N 89°17'30" E			
4	1315.40	N 00°39'50" E			
5		N 89°23'20" E			
6					
7	660.83	N 89°22'22" E			
8	985.14	N 00°36'45" E			
9	1320.66	N 89°26'15" E			

Bearings &  
Angles do not  
agree.

Cunningham-Davis-Stoldt

Field Book No. 4-208

PLAT REPRESENTS DATA AS SUPPLIED BY THE U.S. ARMY CORPS OF ENGINEERS. PREPARED OCTOBER 1986 BY CUNNINGHAM DAVIS - STOLDT, Inc., TULSA, OK.

Under the Supervision of

**U.S. ARMY ENGINEER DISTRICT, TULSA  
CORPS OF ENGINEERS**

**LEGEND**

- △ MONUMENT
- ORIGINAL CORNER
- IRON PIN
- \* COMPUTED DISTANCE