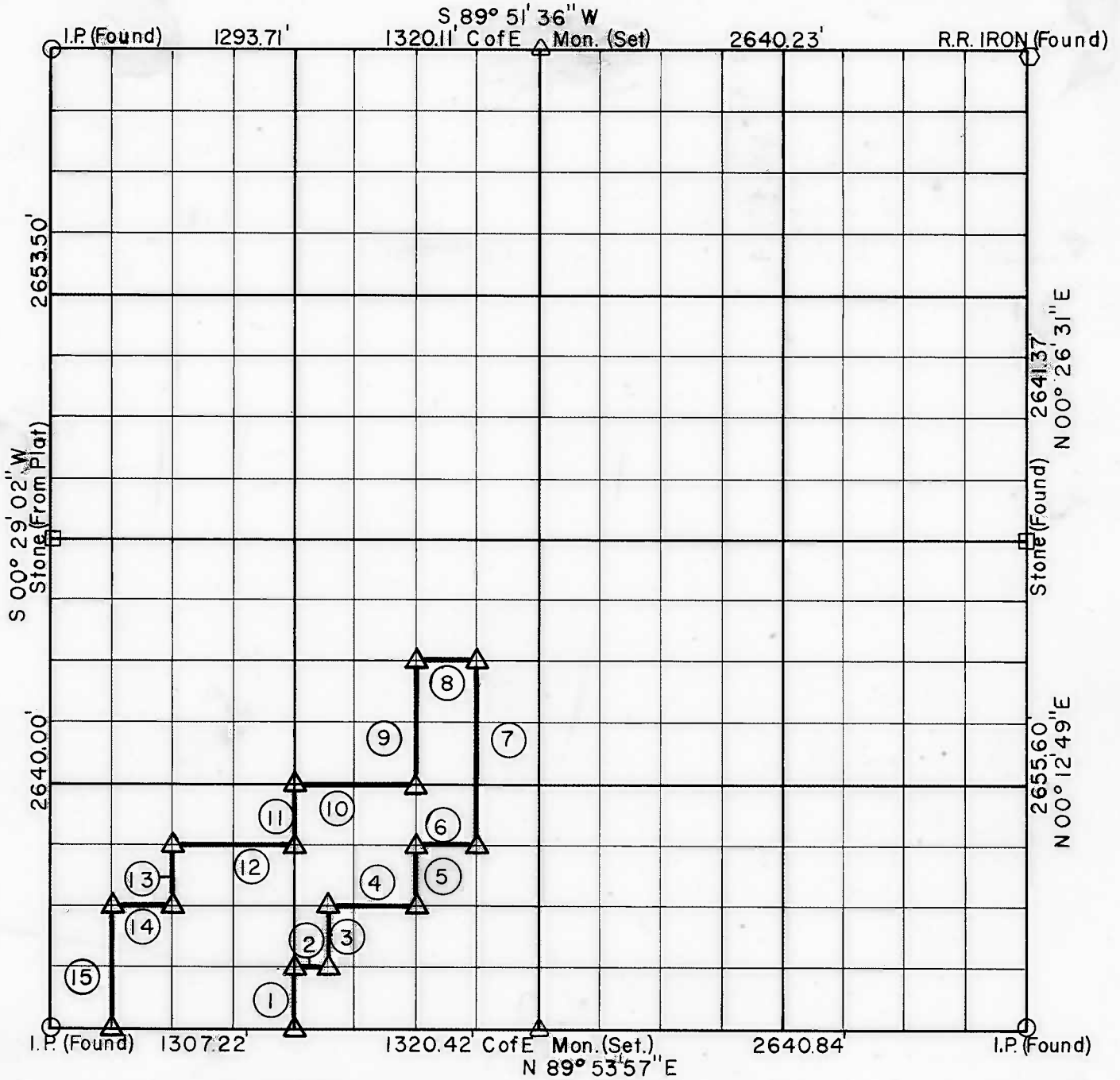


PARTIAL BOUNDARY SURVEYS

TENKILLER LAKE ILLINOIS RIVER, OKLAHOMA

Performed Under Contract Number DACW 56-76-C-0066

SEC. 7 , T-13 - N , R - 22 - E COUNTY SEQUOYAH



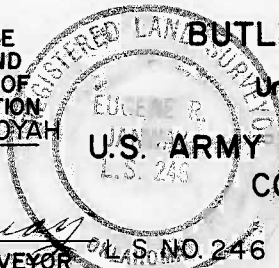
Course No.	Distance	Bearing	Course No.	Distance	Bearing
1	330.48	N 00° 20' 15" E	14	326.39	S 89° 51' 23" W
2	165.05	N 89° 52' 40" E	15	660.24	S 00° 26' 51" W
3	330.54	N 00° 20' 13" E			
4	495.14	N 89° 51' 23" E			
5	330.72	N 00° 20' 09" E			
6	330.09	N 89° 50' 06" E			
7	992.54	N 00° 20' 06" E			
8	330.08	S 89° 46' 15" W			
9	661.45	S 00° 20' 09" W			
10	660.17	S 89° 48' 49" W			
11	330.48	S 00° 20' 15" W			
12	652.36	S 89° 50' 06" W			
13	330.24	S 00° 24' 39" W			

Field Book No. 4-295

Date JANUARY, 1976

CERTIFICATE OF SURVEY

HEREBY CERTIFY THAT THE ABOVE PLAT IS A TRUE AND CORRECT REPRESENTATION OF THE SURVEY MADE IN SECTION 7, T13N, R22E, SEQUOYAH COUNTY, OKLAHOMA



BUTLER ASSOCIATES, INC.

Under the Supervision of

**U.S. ARMY ENGINEER DISTRICT, TULSA
CORPS OF ENGINEERS**

LEGEND

- Δ MONUMENT
- ORIGINAL CORNER
- IRON PIN
- * COMPUTED DISTANCE

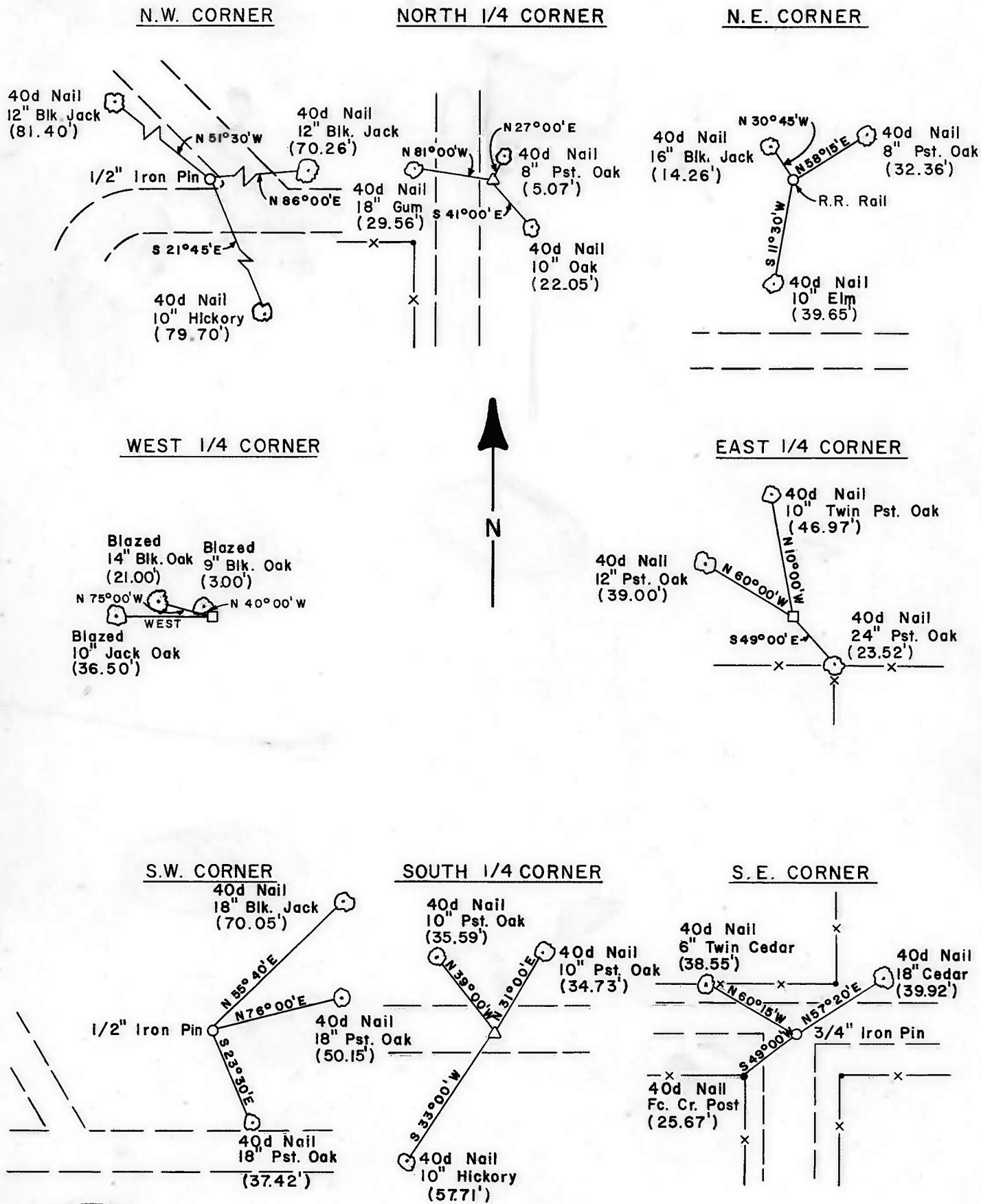
Eugene R. January
REGISTERED LAND SURVEYOR

SHEET 1 of 2

TENKILLER LAKE
ILLINOIS RIVER, OKLAHOMA

SECTION AND QUARTER SECTION CORNER
REFERENCES FOR

SEC.-7, T13N, R22E SEQUOYAH COUNTY



BUTLER ASSOCIATES, INC.

Scale: 1" = 50'
Date: MARCH 1976
Field Book No. 4-295

LEGEND

- △ Monument
- Original Corner
- Iron Pin

Eugene R. Janway
Registered Land Surveyor