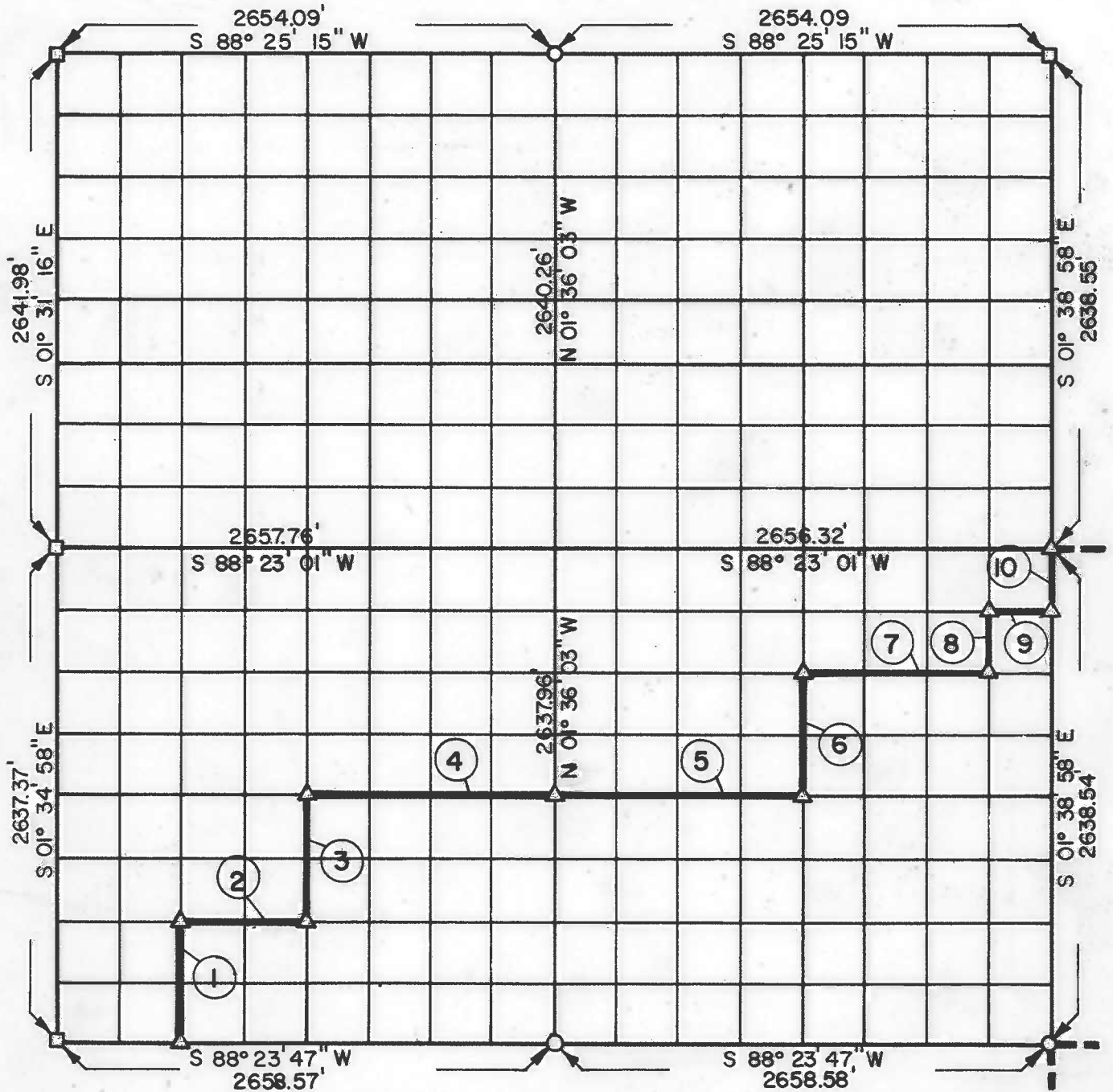


PARTIAL BOUNDARY SURVEYS

AREA "D"
TENKILLER FERRY LAKE
ILLINOIS RIVER, OKLAHOMA

Performed Under Contract Number DACW 56-73-C-0113

SEC. 13 , T 14 N, R 21 E CHEROKEE COUNTY



Course No.	Distance	Bearing	Course No.	Distance	Bearing
1	659.38'	N 01° 35' 16" W			
2	664.60'	N 88° 23' 36" E			
3	659.42'	N 01° 35' 31" W			
4	1329.08'	N 88° 23' 24" E			
5	1328.72'	N 88° 23' 24" E			
6	659.56'	N 01° 37' 30" W			
7	996.33'	N 88° 23' 14" E			
8	329.81'	N 01° 38' 37" W			
9	332.07'	N 88° 23' 05" E			
10	329.82'	N 01° 38' 58" W			

Field Book No. 4-290

Date: JULY 17, 1973

PLUMMER-BRUMMETT, INC.
CONSULTING ENGINEERS & SURVEYORS
2504 E. 14th Pl., Tulsa, Okla., 74104, Tel. (918) 939-2251

Under the Supervision of

U.S. ARMY ENGINEER DISTRICT, TULSA
CORPS OF ENGINEERS

CERTIFICATE OF SURVEY

I HEREBY CERTIFY THAT THE ABOVE PLAT IS A TRUE AND CORRECT REPRESENTATION OF THE SURVEY MADE IN SECTION 13, T 14 N, R 21 E, CHEROKEE COUNTY, OKLAHOMA.

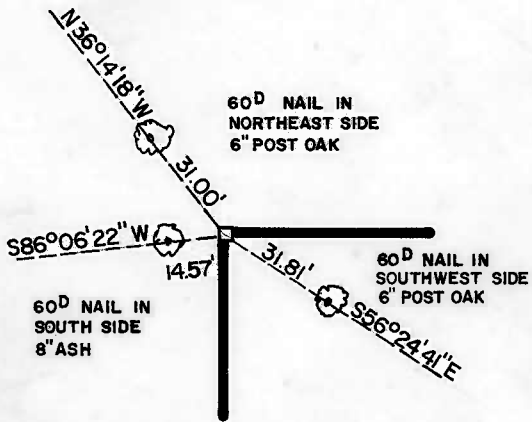
REGISTERED LAND SURVEYOR
OKLAHOMA

LEGEND

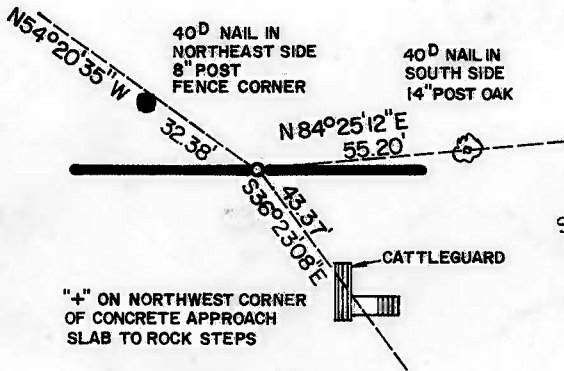
- A MONUMENT
- ORIGINAL CORNER
- IRON PIN

SECTION AND QUARTER SECTION CORNER
REFERENCES FOR
SEC. 13, T 14 N, R 21 E, CHEROKEE COUNTY

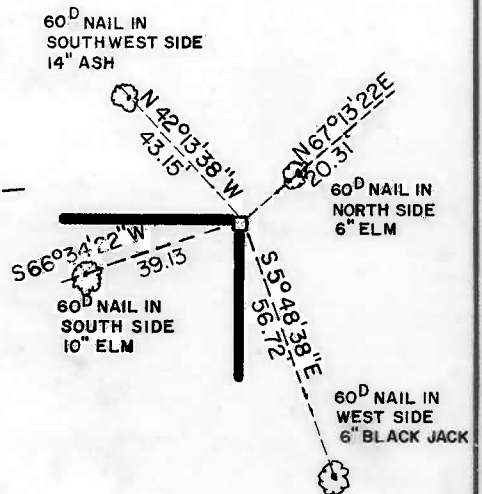
N.W. CORNER



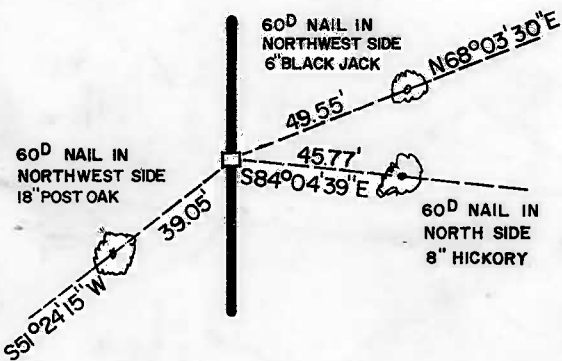
NORTH 1/4 COR.



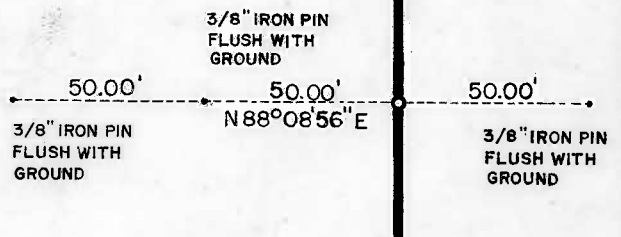
N.E. CORNER



WEST 1/4 COR.

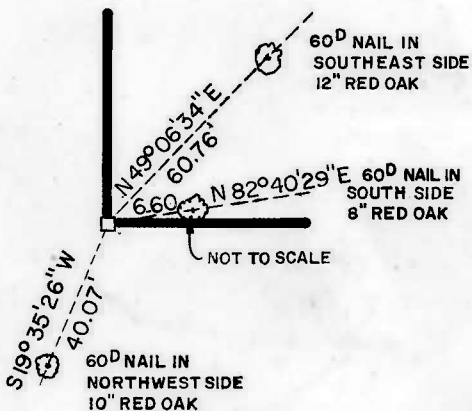


EAST 1/4 COR.

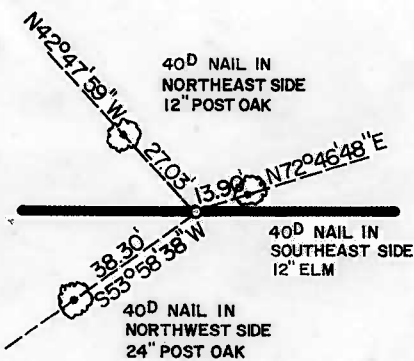


SCALE: 1" = 50'

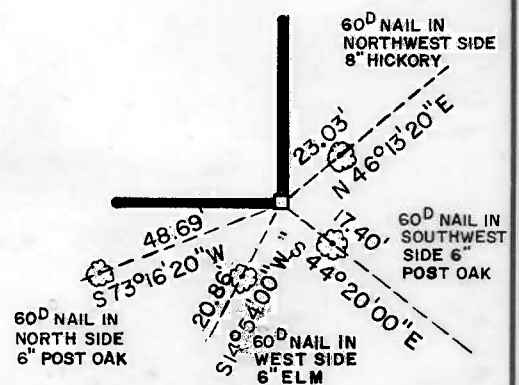
S.W. CORNER



SOUTH 1/4 COR.



S.E. CORNER



LEGEND

- A MONUMENT
- ORIGINAL CORNER
- IRON PIN

PLUMMER-BRUMMETT, INC.
CONSULTING ENGINEERS & SURVEYORS
2504 E. 14th Pl., Tulsa, Okla., 74104, Tel. (918) 939-2251

Under the Supervision of
U.S. ARMY ENGINEER DISTRICT, TULSA
CORPS OF ENGINEERS

FIELD BOOK-NO. 4-290

DATE: JULY 17, 1973

PLUMMER

B. 100

REGISTERED LAND SURVEYOR