

003550

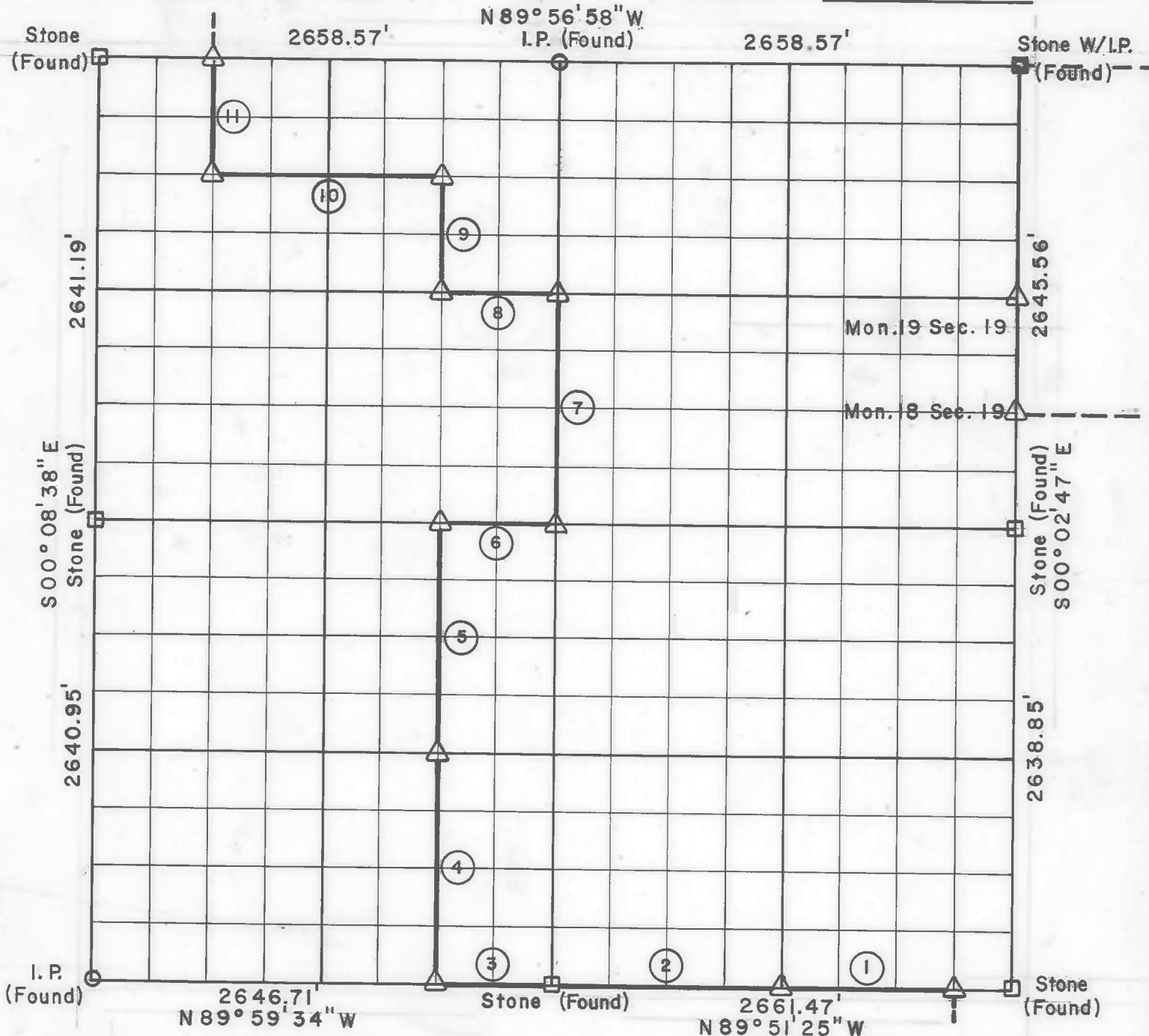
PARTIAL BOUNDARY SURVEYS
TENKILLER FERRY LAKE
ILLINOIS RIVER, OKLAHOMA

JUN 29 1977

At 10¹⁵ O'clock and recorded
in Book 282 At Page 7-8
ROMADELL HANNAH, County Clerk
Deputy

Performed Under Contract Number DACW 56-77-C-0080

SEC. 24 , T - 14 - N , R - 21 - E COUNTY CHEROKEE



Course No.	Distance	Bearing	Course No.	Distance	Bearing
1	1330.73	N89°51'25"W			
2	1330.73	N89°51'25"W			
3	661.68	N89°59'34"W			
4	1318.90	N00°02'51"W			
5	1318.90	N00°02'51"W			
6	663.16	S89°54'08"E			
7	1321.68	N00°00'55"W			
8	663.90	N89°55'33"W			
9	660.70	N00°02'50"W			
10	1328.55	N89°56'15"W			
11	660.43	N00°06'42"W			

Field Book No. 4-307 Date Feb., March & June, 1977

CERTIFICATE OF SURVEY

I HEREBY CERTIFY THAT THE ABOVE PLAT IS A TRUE AND CORRECT REPRESENTATION OF THE SURVEY MADE IN SECTION 24, T 14 N, R 21 E, CHEROKEE COUNTY, OKLAHOMA.



BUTNER ASSOCIATES, INC.
Under the Supervision of
EUGENE R. JANWAY
U.S. ARMY ENGINEER DISTRICT, TULSA
CORPS OF ENGINEERS

- LEGEND
- △ MONUMENT
 - ORIGINAL CORNER
 - IRON PIN
 - * COMPUTED DISTANCE

Eugene R. Janway
REGISTERED LAND SURVEYOR L.S. No. 246

8

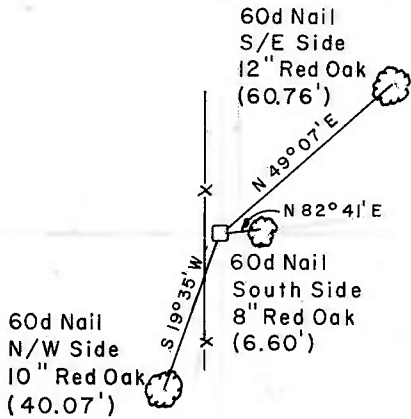
TENKILLER FERRY LAKE ILLINOIS RIVER, OKLAHOMA

SECTION AND QUARTER SECTION CORNER REFERENCES FOR

SEC. 24, T14N, R21E CHEROKEE COUNTY

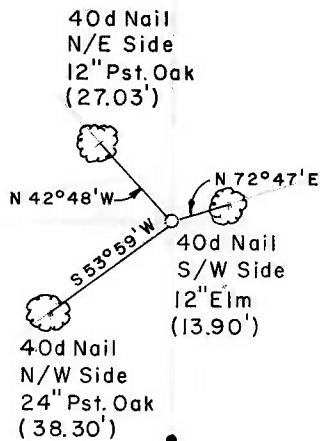
N. W. CORNER

BY OTHERS



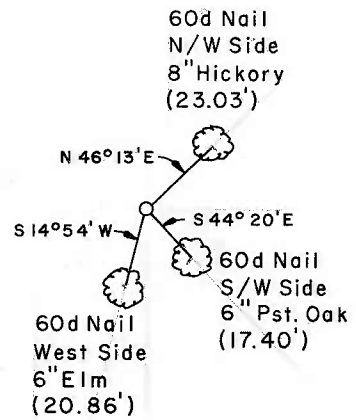
NORTH 1/4 CORNER

BY OTHERS

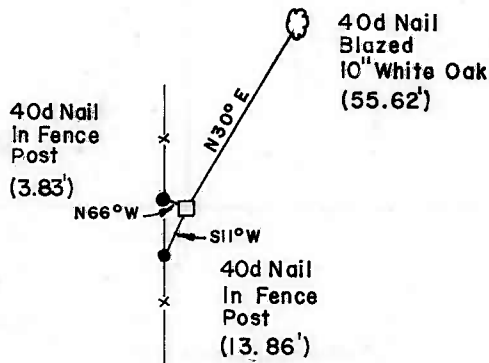


N. E. CORNER

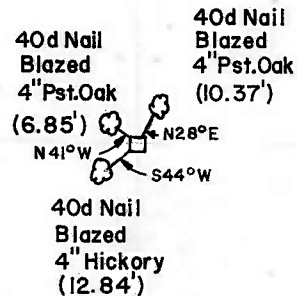
BY OTHERS



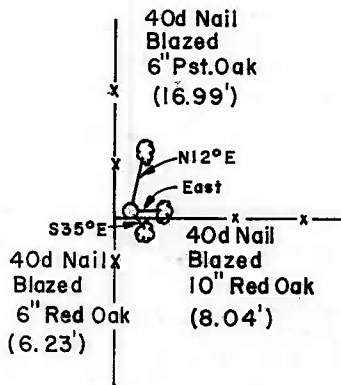
WEST 1/4 CORNER



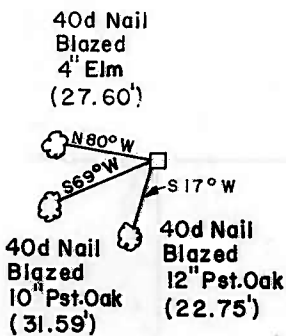
EAST 1/4 CORNER



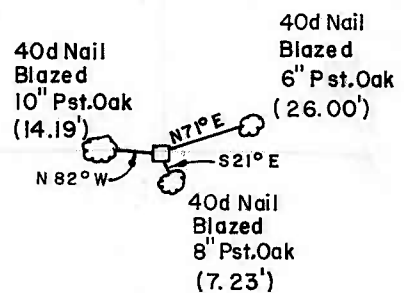
S. W. CORNER



SOUTH 1/4 CORNER



S. E. CORNER

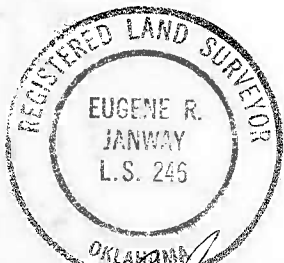


BUTLER ASSOCIATES, INC.

Scale: 1" = 50'

Date: Feb. March & June 1977

Field Book No. 4-307



LEGEND

- △ Monument
- Original Corner
- Iron Pin