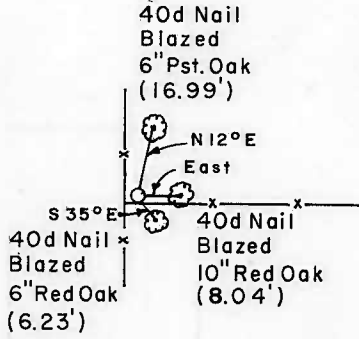


TENKILLER FERRY LAKE  
ILLINOIS RIVER, OKLAHOMA

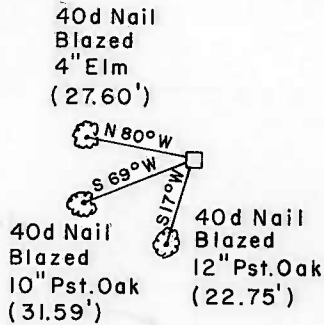
SECTION AND QUARTER SECTION CORNER  
REFERENCES FOR

SEC.-25, T14N, R21 E CHEROKEE COUNTY

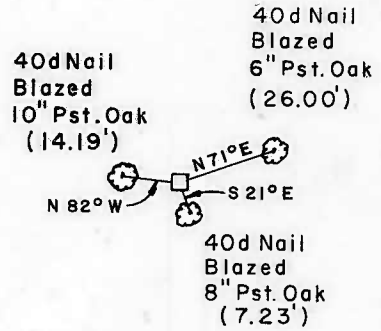
N.W. CORNER



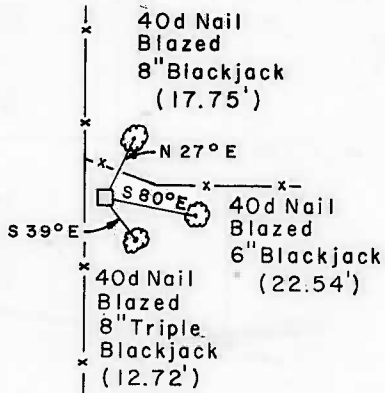
NORTH 1/4 CORNER



N.E. CORNER



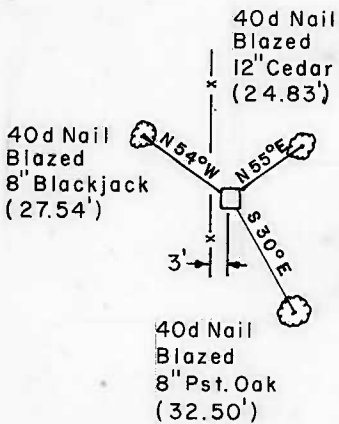
WEST 1/4 CORNER



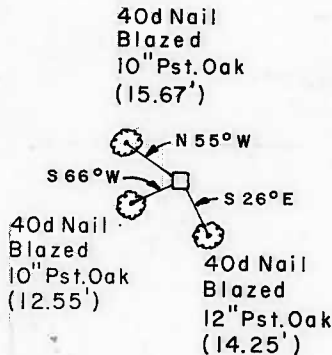
EAST 1/4 CORNER

In Lake  
+

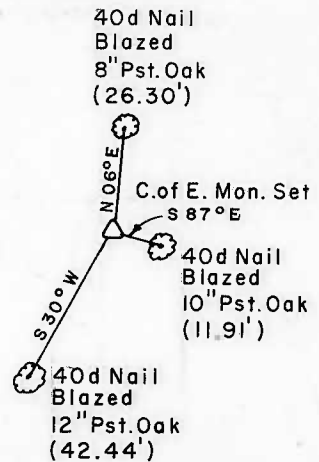
S.W. CORNER



SOUTH 1/4 CORNER



S.E. CORNER



BUTLER ASSOCIATES, INC.

Scale: 1" = 50'  
Date: May, 1977  
Field Book No. 4-309



LEGEND

- △ Monument
- Original Corner
- Iron Pin

003551

PARTIAL BOUNDARY SURVEYS  
TENKILLER FERRY LAKE

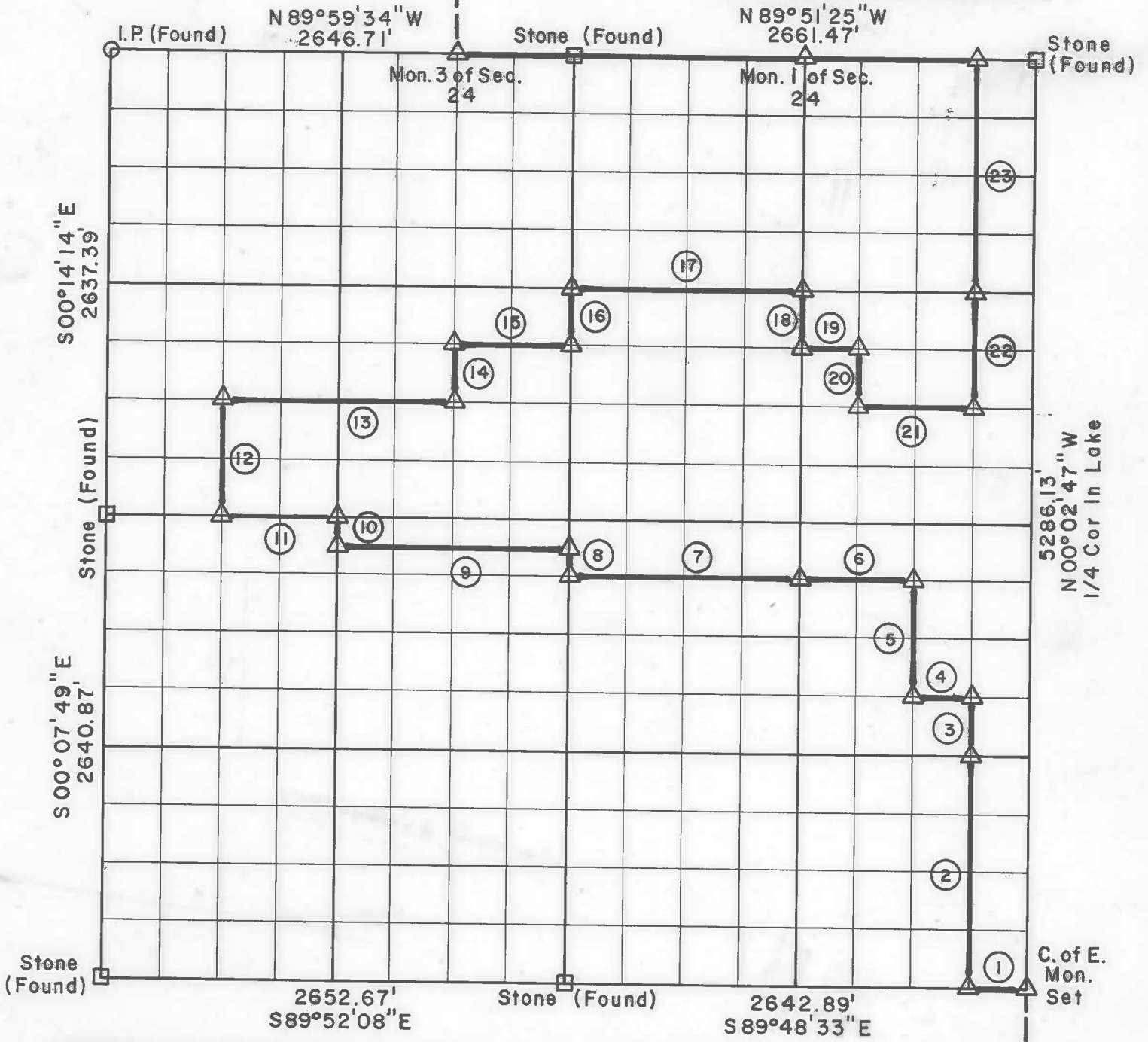
JUN 29 1977

ILLINOIS RIVER, OKLAHOMA

At 10<sup>15</sup> o'clock and recorded  
in Book 282 At Page 9-10  
ROMADELL HANNAH, County Clerk  
Deputy

Performed Under Contract Number DACW 56-77-C-0080

SEC. 25, T-14-N, R-21-E COUNTY CHEROKEE

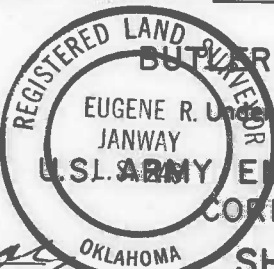


Course No.	Distance	Bearing	Course No.	Distance	Bearing
1	330.36	N 89° 48' 33" W	13	1323.55	S 89° 53' 43" E
2	1321.38	N 00° 04' 19" W	14	330.23	N 00° 14' 43" W
3	330.34	N 00° 04' 19" W	15	661.76	S 89° 54' 42" E
4	331.08	N 89° 50' 33" W	16	330.42	N 00° 14' 53" W
5	660.61	N 00° 05' 49" W	17	1328.41	S 89° 51' 36" E
6	662.75	N 89° 51' 22" W	18	330.40	S 00° 08' 50" E
7	1325.50	N 89° 51' 22" W	19	331.96	S 89° 51' 38" W
8	165.04	N 00° 14' 53" W	20	330.40	S 00° 07' 19" E
9	1323.79	N 89° 51' 48" W	21	663.62	S 89° 51' 41" E
10	165.04	N 00° 11' 21" W	22	660.78	N 00° 04' 18" W
11	661.81	N 89° 51' 47" W	23	1321.55	N 00° 04' 18" W
12	659.72	N 00° 14' 24" W			

Field Book No. 4-309 Date May, 1977

CERTIFICATE OF SURVEY

I HEREBY CERTIFY THAT THE ABOVE PLAT IS A TRUE AND CORRECT REPRESENTATION OF THE SURVEY MADE IN SECTION 25, T14N, R21E, CHEROKEE COUNTY, OKLAHOMA.



BUTLER ASSOCIATES, INC.

Under the Supervision of  
U.S. ARMY ENGINEER DISTRICT, TULSA  
CORPS OF ENGINEERS

LEGEND

- Δ MONUMENT
- ORIGINAL CORNER
- IRON PIN
- \* COMPUTED DISTANCE

Eugene R. Janway  
REGISTERED LAND SURVEYOR L.S. No. 246

SHEET 1 of 2