

JUN 29 1977

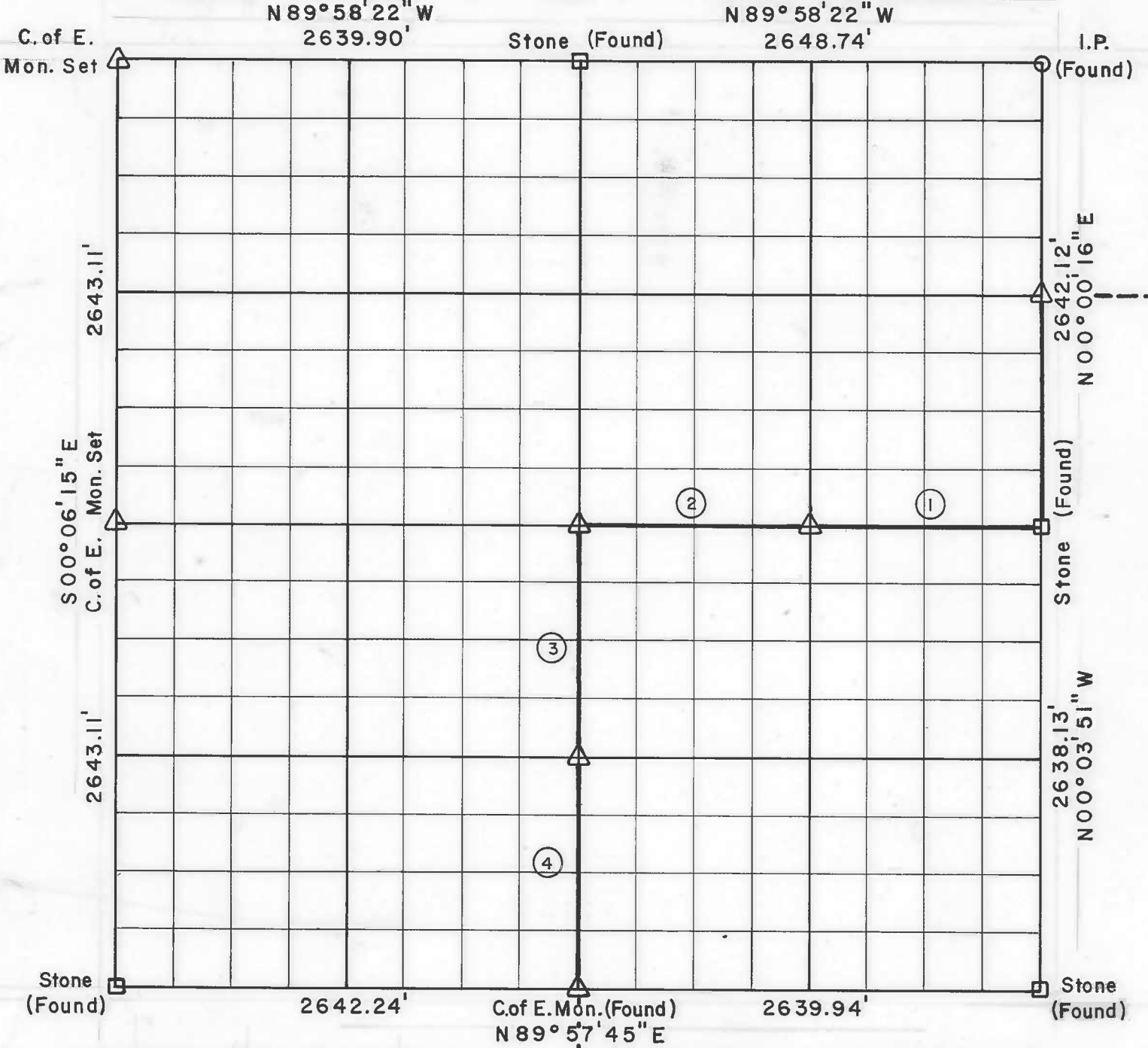
**PARTIAL BOUNDARY SURVEYS
TENKILLER FERRY LAKE
ILLINOIS RIVER, OKLAHOMA**

At 10¹⁵ o'clock and recorded
in Book 282 At Page 11-12
ROMADELL HANNAH, County Clerk
Deputy

003552

Performed Under Contract Number DACW 56-77-C-0080

SEC. 34 , T - 14 - N , R - 21 - E COUNTY CHEROKEE



Course No.	Distance	Bearing	Course No.	Distance	Bearing
1	1321.48	N89°59'00"W			
2	1321.48	N89°59'00"W			
3	1320.31	S00°07'46"E			
4	1320.31	S00°07'46"E			

Field Book No. 4-312 Date April, 1977

CERTIFICATE OF SURVEY

I HEREBY CERTIFY THAT THE ABOVE PLAT IS A TRUE AND CORRECT REPRESENTATION OF THE SURVEY MADE IN SECTION 34, T 14 N, R 21 E, CHEROKEE COUNTY, OKLAHOMA.

BUTLER ASSOCIATES, INC.
Under the Supervision of
S. E. ARMY
ENGINEER DISTRICT, TULSA
CORPS OF ENGINEERS
L.S. 246
SHEET 1 of 2

- LEGEND**
- △ MONUMENT
 - ORIGINAL CORNER
 - IRON PIN
 - * COMPUTED DISTANCE

Engineer S. E. Army
REGISTERED LAND SURVEYOR L.S. No. 246

TENKILLER FERRY LAKE
ILLINOIS RIVER, OKLAHOMA

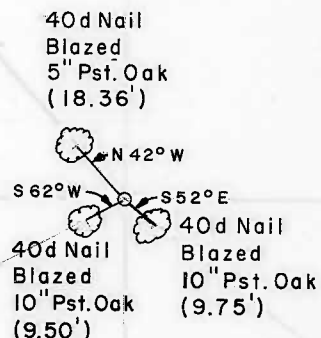
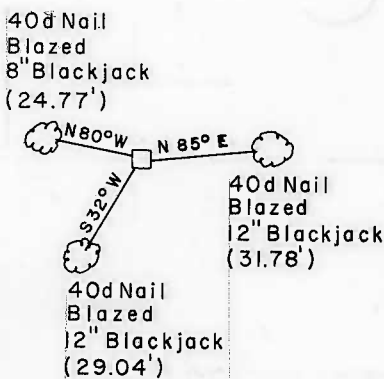
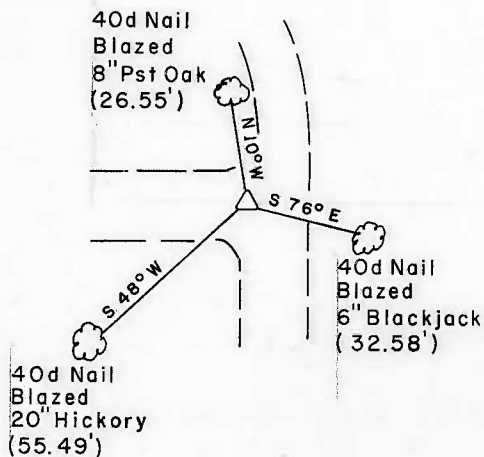
SECTION AND QUARTER SECTION CORNER
REFERENCES FOR

SEC. 34, T14N, R21E CHEROKEE COUNTY

N.W. CORNER

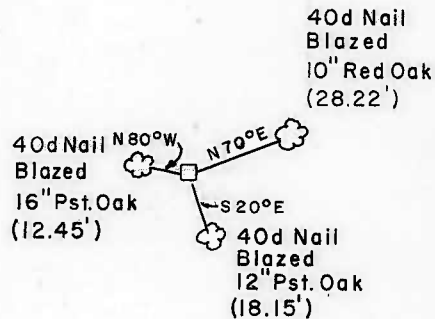
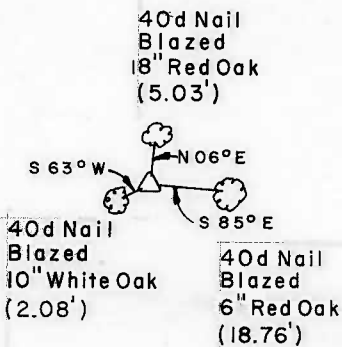
NORTH 1/4 CORNER

N.E. CORNER



WEST 1/4 CORNER

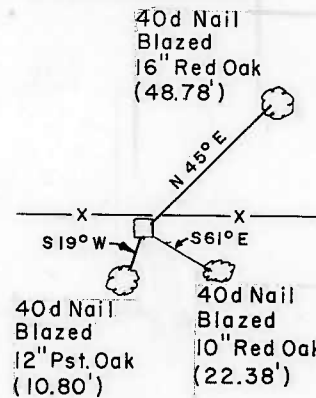
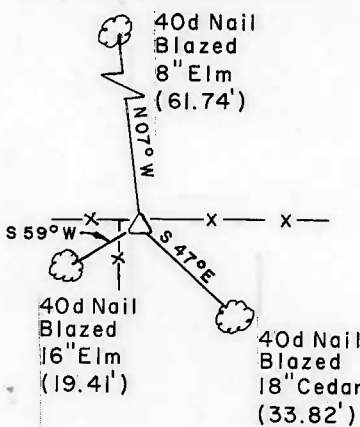
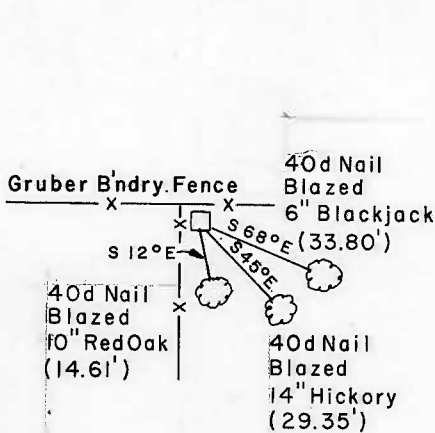
EAST 1/4 CORNER



S.W. CORNER

SOUTH 1/4 CORNER

S.E. CORNER



BUTLER ASSOCIATES, INC.

Scale: 1" = 50'
Date: APRIL 1977
Field Book No. 4-312

LEGEND

- △ Monument
- Original Corner
- Iron Pin

Eugene R. Janway
Registered Land Surveyor L. S. No. 246