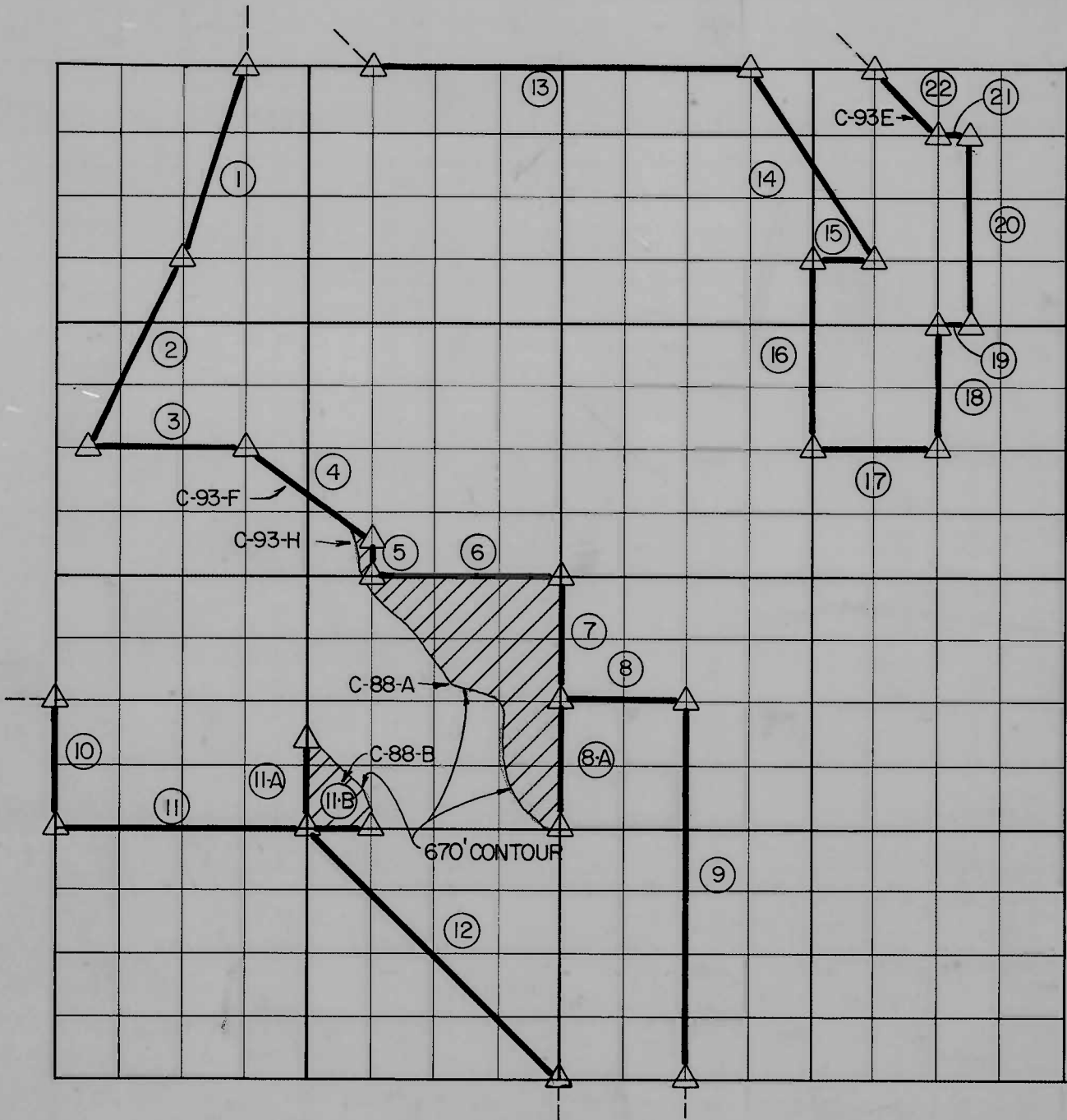


# PARTIAL BOUNDARY SURVEYS TENKILLER LAKE

Performed Under Contract Number DACW 56-85-C-1028

SEC. 14 , T - 14 -N , R - 22 -E COUNTY CHEROKEE



Course No.	Distance	Bearing	Course No.	Distance	Bearing
1	1040.31	S 18° 00' 27" W	11-B	313.00	S 89° 40' 23" E
2	1093.75	S 24° 10' 23" W	12	1865.67	S 45° 23' 37" E
3	825.00	S 89° 53' 37" E	13		S 89° 53' 37" E
4	835.64	S 53° 12' 37" E	14	1305.08	S 33° 55' 37" E
5	165.00	S 00° 23' 37" E	15	330.00	S 89° 53' 37" E
6	990.00	S 89° 53' 37" E	16	990.00	N 00° 23' 37" E
7	660.00	N 00° 23' 37" W	17	660.00	S 89° 53' 37" E
8	660.00	S 89° 53' 37" E	18	660.00	N 00° 23' 37" W
8A			19	165.00	S 89° 53' 37" E
9	1980.00	N 00° 23' 37" W	20	990.00	N 00° 23' 37" W
10		N 00° 23' 37" W	21	165.00	S 89° 53' 37" E
11	1320.00	S 89° 40' 23" E	22	464.74	N 45° 08' 37" W
11-A	481.00	N 00° 23' 00" W			

Field Book No. 4-222      Date APRIL, 1953  
4-252                                      AUGUST, 1953

QUIT CLAIM DEED FEB. 1958 (NOT SURVEYED)  
TRACTS C-88-A, C-88-B, C-93-E, C-93-F, C-93-H

Under the Supervision of

**U.S. ARMY ENGINEER DISTRICT, TULSA  
CORPS OF ENGINEERS**

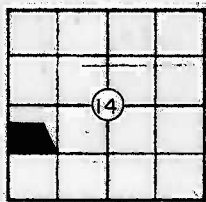
**LEGEND**

- △ MONUMENT
- ORIGINAL CORNER
- IRON PIN
- \* COMPUTED DISTANCE

PLAT REPRESENTS DATA AS SUPPLIED BY THE U.S. ARMY CORPS OF ENGINEERS. PREPARED OCTOBER 1986 BY CUNNINGHAM DAVIS - STOLDT, Inc., TULSA, OK.

R 22 E

T 14 N



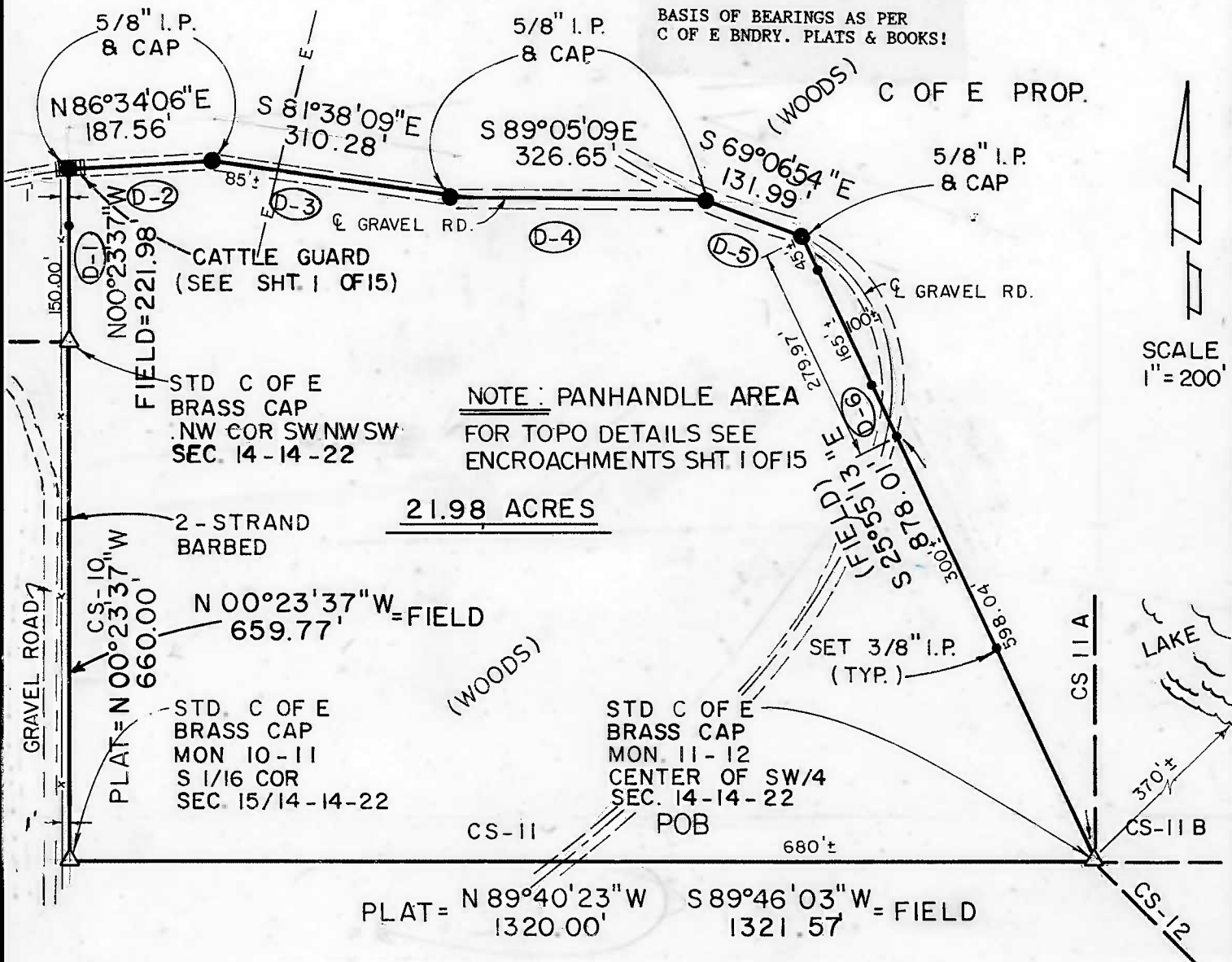
# PARTIAL BOUNDARY SURVEYS TENKILLER LAKE OKLA. SEC. 14 T-14 -N R-22-E

PARCEL # 8

COUNTY CHEROKEE

D.O. NO. 0001

Performed Under Contract No. DACA 56-88-D-0047



NOTE: PANHANDLE AREA  
FOR TOPO DETAILS SEE  
ENCROACHMENTS SHT 1 OF 15

21.98 ACRES

SCALE  
1" = 200'

### PARCEL #8 DESCRIPTION

Parcel #8 containing 21.98 Acres, "more or less", located in the NW 1/4 SW 1/4, Section 14, Township 14 North, Range 22 East, Indian Meridian, Cherokee County, Oklahoma, described as: beginning at the center of the SW 1/4, being a std. C of E brass cap; thence S89°46'03"W, 1321.57 feet (cs-11) to the southwest corner SW 1/4 NW 1/4 SW 1/4, being a std. C of E brass cap; thence N00°23'37"W, 659.77 feet (cs-10) to the northwest corner SW 1/4 NW 1/4 SW 1/4, being a std. C of E brass cap; thence N00°23'37"W, 221.98 feet (D-1) to a 5/8" iron pin with aluminum cap in a gravel road; thence N86°34'06"E, 187.56 feet (D-2) along said road to a 5/8" iron pin with aluminum cap; thence S81°38'09"E, 310.28 feet (D-3) along said road to a 5/8" iron pin with aluminum cap; thence S89°05'09"E, 326.65 feet (D-4) along said road to a 5/8" iron pin with aluminum cap; thence S69°06'54"E, 131.99 feet (D-5) along said road to a 5/8" iron pin with aluminum cap; thence S25°55'13"E, 878.01 feet (D-6) to the point of beginning.

Field Book No. 4 - 222 Date 11/88

### CERTIFICATE OF SURVEY

I hereby certify that the above plat is a true and correct representation of the survey.

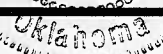
**SCOTT & ASSOCIATES INC.**  
LAND SURVEYORS

### LEGEND

- △ MONUMENT
- ORIGINAL CORNER
- IRON PIN w/CAP

**U.S. ARMY CORPS OF ENGINEERS**  
TULSA DISTRICT

BASIL E. SCOTT JR. L.S. 545



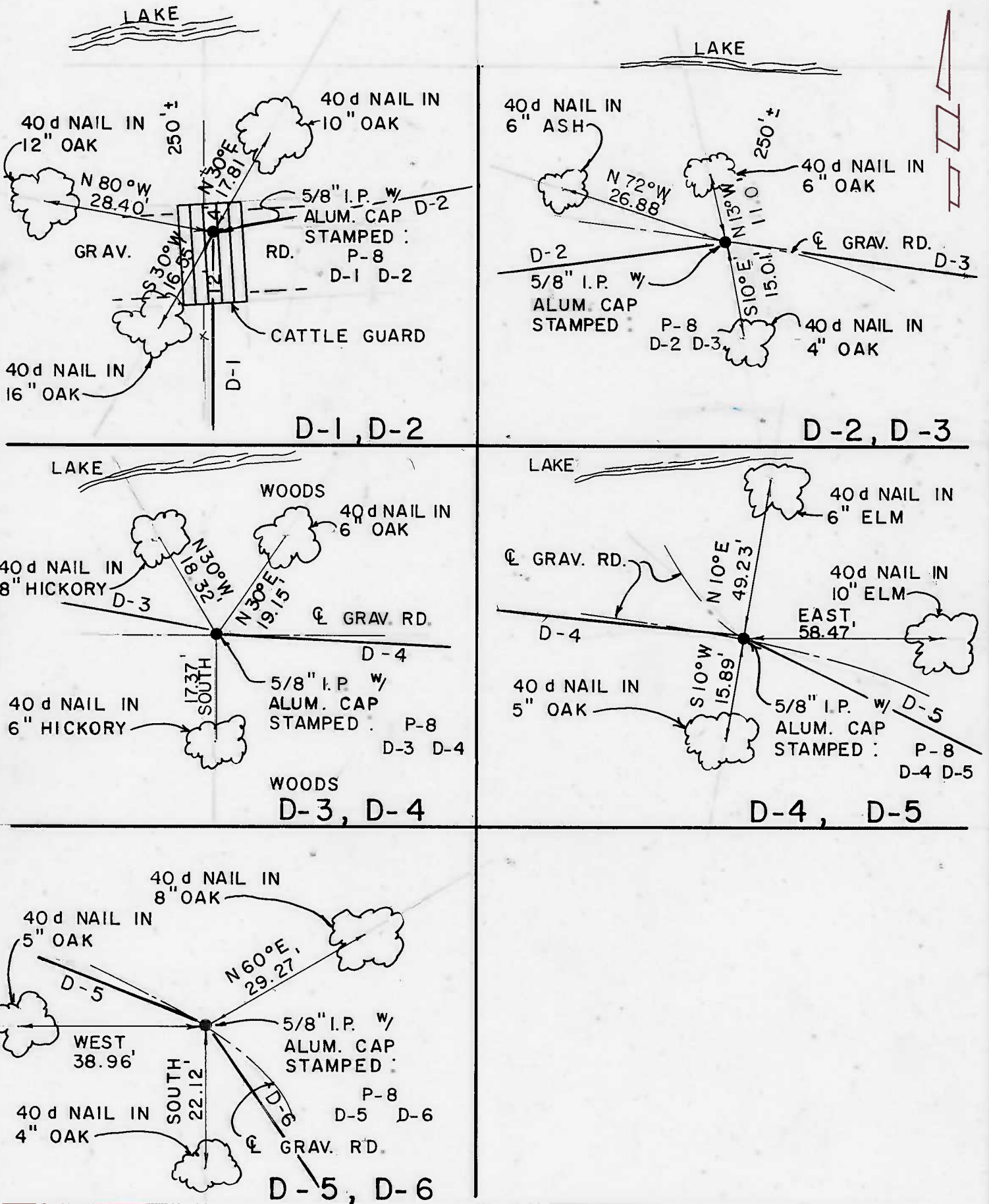
**REFERENCES**  
**PARTIAL BOUNDARY SURVEYS**  
**TENKILLER LAKE OKLA.**  
**SEC. 14 T-14 -N R-22-E**

**COUNTY CHEROKEE**

D.O. NO. 0001

Performed Under Contract No. DACA 56-88-D-0047

**PARCEL # 8**



Field Book No. 4-222 Date 11/88

**CERTIFICATE OF SURVEY**

I Hereby Certify That The Above Plat is a True and Correct Representation of the Survey

*Basil E. Scott Jr.*  
 BASIL E. SCOTT JR. L.S. 545

**SCOTT & ASSOCIATES, INC.**  
**LAND SURVEYORS**

**U.S. ARMY CORPS OF ENGINEERS**  
**TULSA DISTRICT**

— LEGEND —

- △ MONUMENT
- ORIGINAL CORNER
- IRON PIN w/CAP