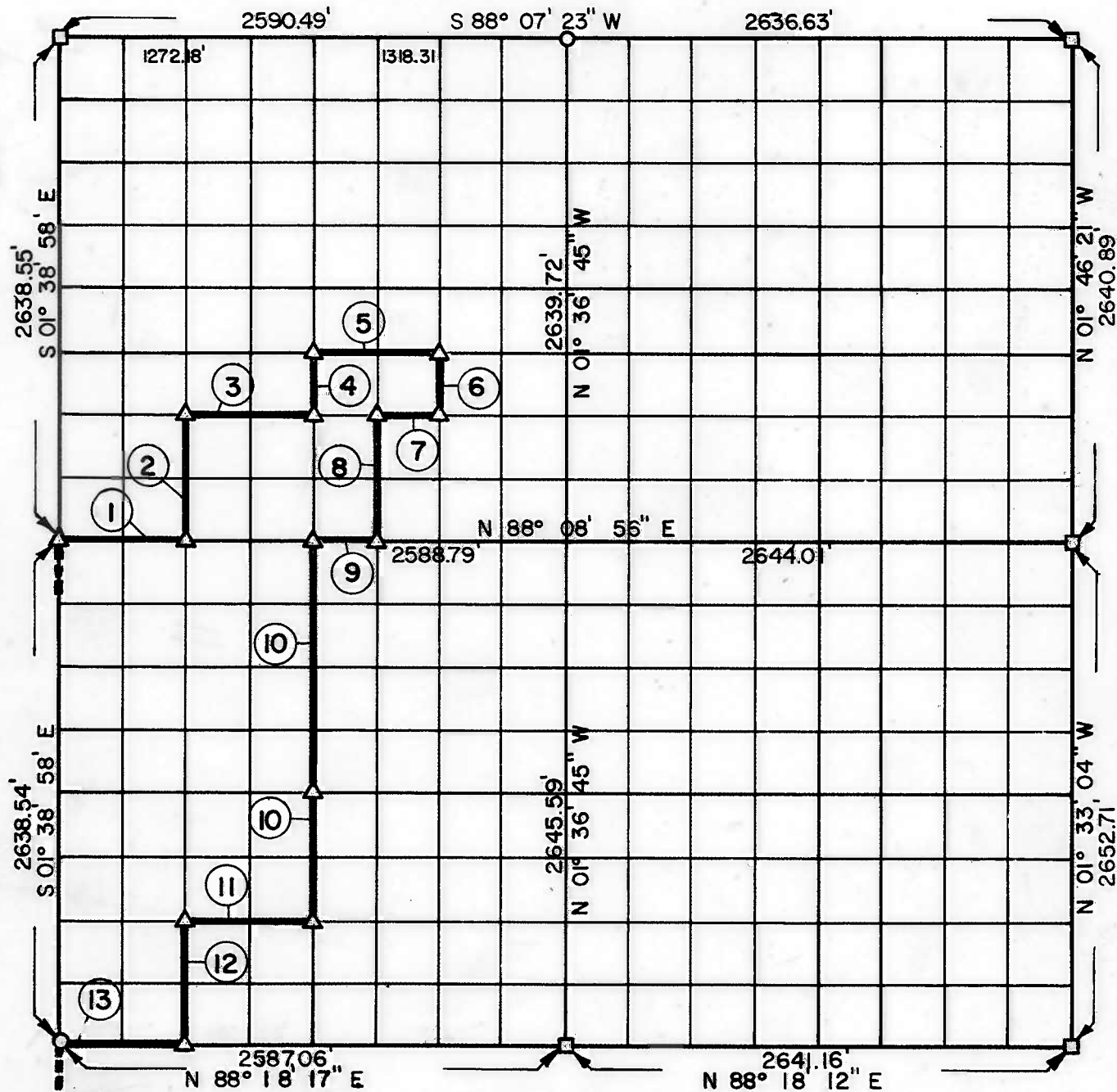


PARTIAL BOUNDARY SURVEYS

AREA "D"
TENKILLER FERRY LAKE
ILLINOIS RIVER, OKLAHOMA

Performed Under Contract Number DACW 56-73-C-0113

SEC. 18 , T14 N, R22 E CHEROKEE COUNTY



Course No.	Distance	Bearing	Course No.	Distance	Bearing
1	634.33'	N 88° 08' 56" E	13	632.56'	S 88° 18' 17" W
2	659.71'	N 01° 36' 39" W			
3	634.78'	N 88° 08' 32" E			
4	329.89'	N 01° 34' 22" W			
5	659.72'	N 88° 08' 22" E			
6	329.93'	S 01° 35' 34" E			
7	329.92'	S 88° 08' 34" W			
8	659.82'	S 01° 34' 56" E			
9	330.03'	S 88° 08' 56" W			
10	1981.50'	S 01° 34' 22" E			
11	633.00'	S 88° 15' 57" W			
12	660.06'	S 01° 36' 39" E			

Field Book No. 4-291

Date: JULY 17, 1973

PLUMMER - BRUMMETT, INC.
CONSULTING ENGINEERS & SURVEYORS
2504 E. 14th Pl., Tulsa, Okla., 74104, Tel. (918) 939-2251

Under the Supervision of

U.S. ARMY ENGINEER DISTRICT, TULSA
CORPS OF ENGINEERS

CERTIFICATE OF SURVEY

I HEREBY CERTIFY THAT THE ABOVE PLAT IS A TRUE AND CORRECT REPRESENTATION OF THE SURVEY MADE IN SECTION 18, T14 N, R22 E, CHEROKEE COUNTY, OKLAHOMA.

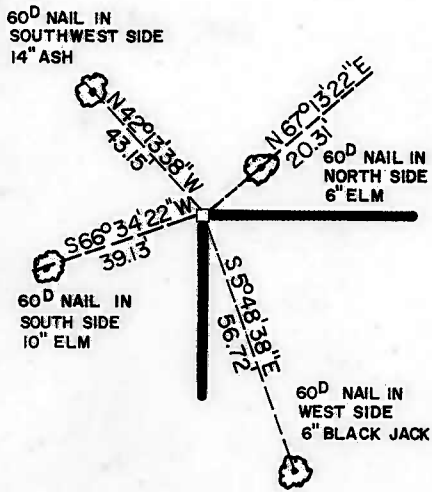
L. S. VOO
REGISTERED LAND SURVEYOR

LEGEND

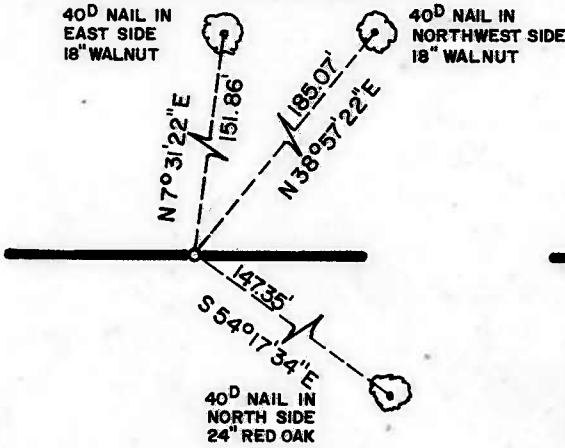
- ▲ MONUMENT
- ORIGINAL CORNER
- IRON PIN

SECTION AND QUARTER SECTION CORNER
REFERENCES FOR
SEC. 18 , T 14 N, R 22 E, CHEROKEE COUNTY

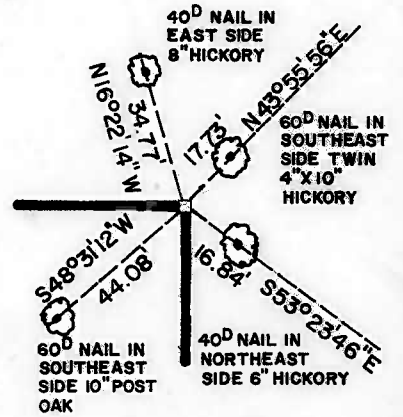
N.W. CORNER



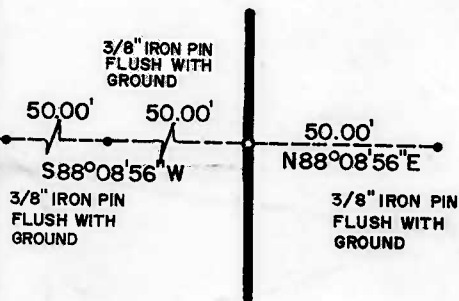
NORTH 1/4 COR.



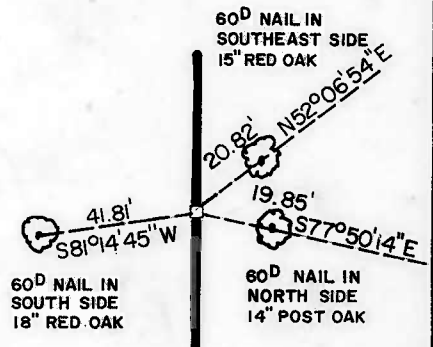
N.E. CORNER



WEST 1/4 COR.

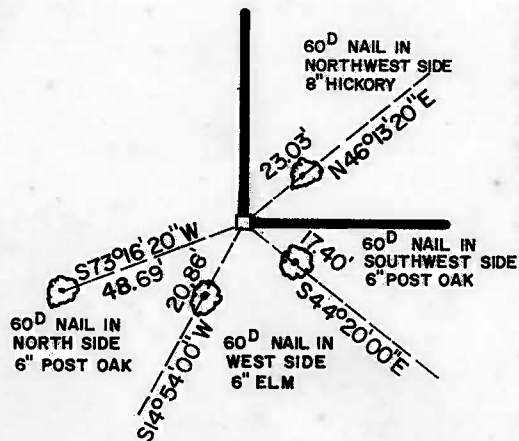


EAST 1/4 COR.

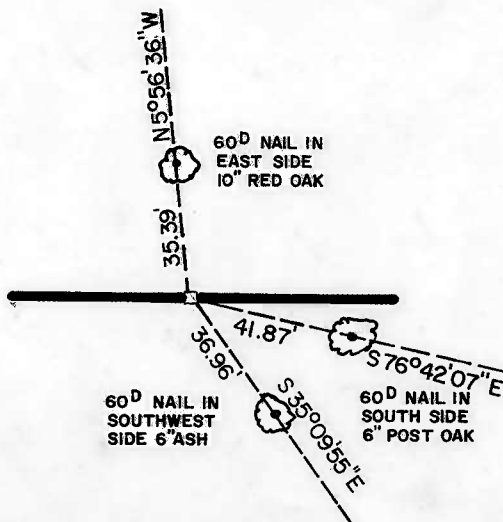


SCALE: 1" = 50'

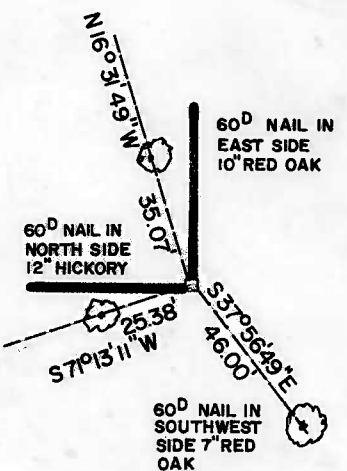
S.W. CORNER



SOUTH 1/4 COR.



S.E. CORNER



LEGEND

- A MONUMENT
- ORIGINAL CORNER
- IRON PIN

PLUMMER-BRUMMETT, INC.
CONSULTING ENGINEERS & SURVEYORS
2504 E. 14th Pl., Tulsa, Okla., 74104, Tel. (918) 939-2251

Under the Supervision of

U.S. ARMY ENGINEER DISTRICT, TULSA
CORPS OF ENGINEERS

