

JUN 29 1977

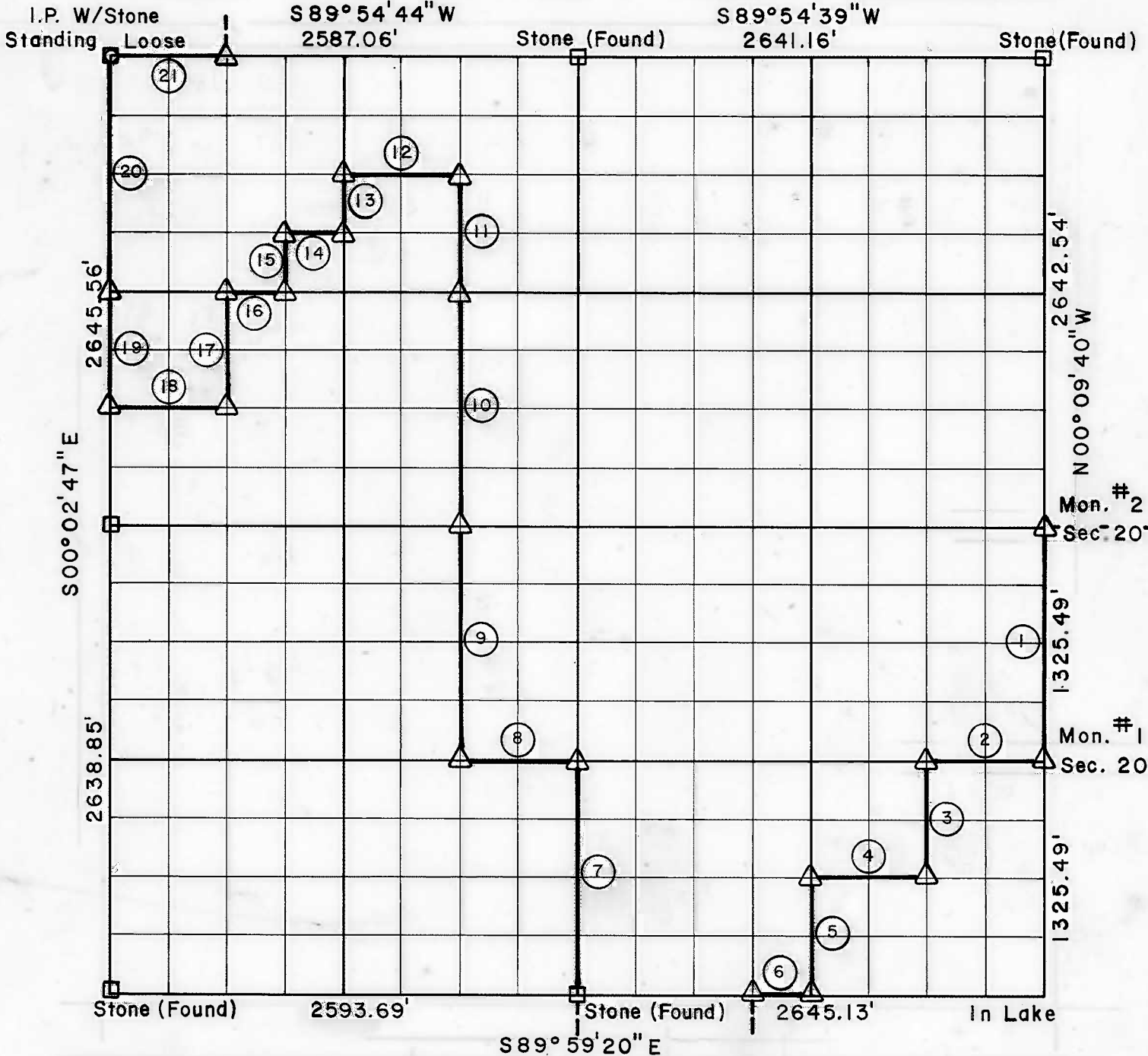
003548

PARTIAL BOUNDARY SURVEYS
TENKILLER FERRY LAKE
ILLINOIS RIVER, OKLAHOMA

At 10¹⁰ o'clock and recorded
in Book 282 At Page 3-4
ROMADELL HANNAH, County Clerk
Deputy

Performed Under Contract Number DACW 56-77-C-0080

SEC. 19, T-14-N, R-22-E COUNTY CHEROKEE



Course No.	Distance	Bearing	Course No.	Distance	Bearing
1	1325.49	S00°09'40"E	13	330.60	S00°08'50"E
2	661.03	S89°56'41"W	14	316.71	S89°53'58"W
3	662.36	S00°09'01"E	15	330.62	S00°07'19"E
4	661.16	S89°58'41"W	16	316.86	S89°53'43"W
5	661.98	S00°08'23"E	17	661.30	S00°05'48"W
6	330.64	N89°59'20"W	18	634.30	S89°53'13"W
7	1322.43	N00°07'06"W	19	661.39	N00°02'47"W
8	659.97	S89°56'41"W	20	1322.78	N00°02'47"W
9	1321.66	N00°07'58"W	21	632.55	N89°54'44"E
10	1322.21	N00°07'58"W			
11	661.06	N00°07'58"W			
12	660.81	S89°54'14"W			

Field Book No. 4-306 Date May, 1977

CERTIFICATE OF SURVEY

I HEREBY CERTIFY THAT THE ABOVE PLAT IS A TRUE AND CORRECT REPRESENTATION OF THE SURVEY MADE IN SECTION 19, T14N, R22E, CHEROKEE COUNTY, OKLAHOMA.



BUTLER ASSOCIATES, INC.

Under the Supervision of

U.S. ARMY ENGINEER DISTRICT, TULSA
CORPS OF ENGINEERS

LEGEND

- △ MONUMENT
- ORIGINAL CORNER
- IRON PIN
- * COMPUTED DISTANCE

Eugene R. Janway
REGISTERED LAND SURVEYOR

A

TENKILLER FERRY LAKE

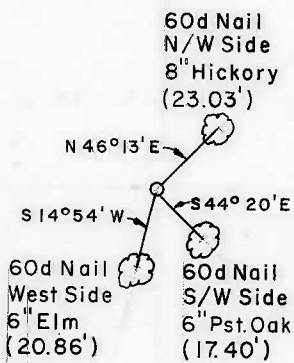
ILLINOIS RIVER, OKLAHOMA

SECTION AND QUARTER SECTION CORNER REFERENCES FOR

SEC. -19, T14N, R22E CHEROKEE COUNTY

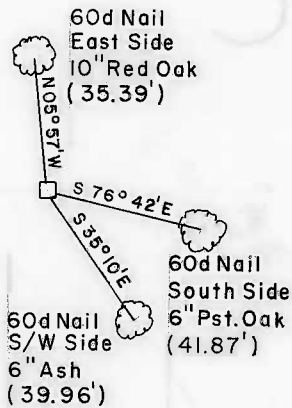
N.W. CORNER

BY OTHERS



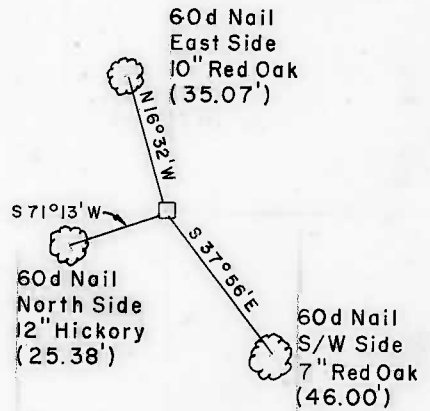
NORTH 1/4 CORNER

BY OTHERS

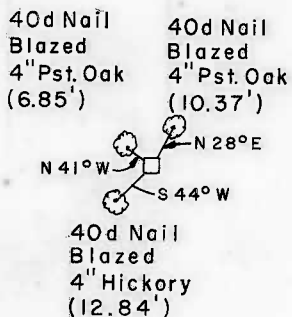


N.E. CORNER

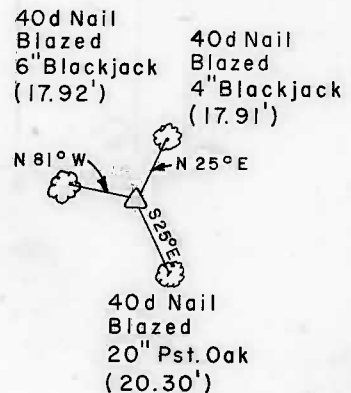
BY OTHERS



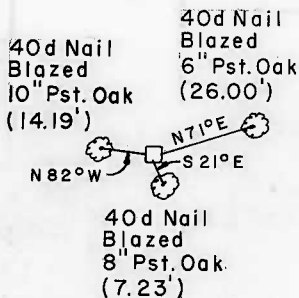
WEST 1/4 CORNER



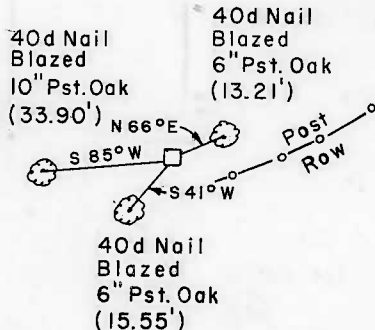
EAST 1/4 CORNER



S.W. CORNER



SOUTH 1/4 CORNER



S.E. CORNER

In Lake
+



BUTLER ASSOCIATES, INC.

Scale: 1" = 50'
Date: JUNE 1977
Field Book No. 4-306

LEGEND

- △ Monument
- Original Corner
- Iron Pin

Eugene R. Janway L.S. No. 246
Registered Land Surveyor