

003547

JUN 29 1977

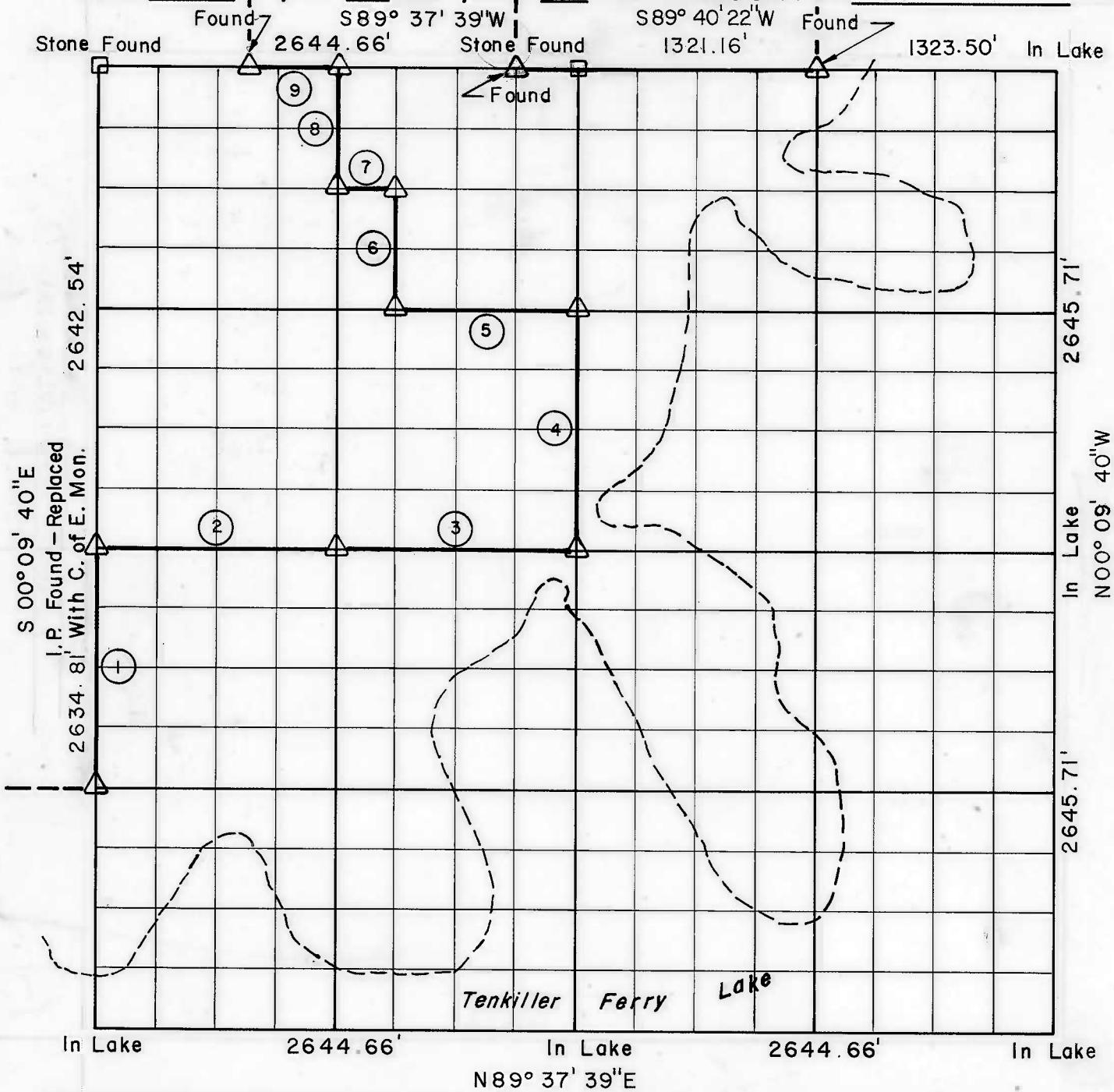
PARTIAL BOUNDARY SURVEYS
TENKILLER FERRY LAKE

ILLINOIS RIVER, OKLAHOMA

At 10¹⁰ O'clock and recorded
in Book 382 At Page 1-2
ROMADELL HANNAH, County Clerk
Deputy

Performed Under Contract Number DACW 56-77-C-0080

SEC. 20, T-14-N, R-22-E COUNTY CHEROKEE



Course No.	Distance	Bearing	Course No.	Distance	Bearing
1	1325.49	N00° 09' 40" W			
2	1322.32	N89° 41' 04" E			
3	1322.32	N89° 41' 04" E			
4	1322.58	N00° 09' 40" W			
5	991.74	S89° 39' 21" W			
6	661.05	N00° 09' 40" W			
7	330.58	S89° 38' 30" W			
8	660.96	N89° 09' 40" W			
9	495.87	S89° 37' 39" W			

Field Book No. 4-305

Date Feb. & May, 1977

CERTIFICATE OF SURVEY

I HEREBY CERTIFY THAT THE ABOVE PLAT IS A TRUE AND CORRECT REPRESENTATION OF THE SURVEY MADE IN SECTION 20, T 14 N, R 22 E, CHEROKEE COUNTY, OKLAHOMA.



BUTLER ASSOCIATES, INC.

Under the Supervision of

EUGENE R. JANWAY
JANWAY
U.S. ARMY ENGINEER DISTRICT, TULSA
CORPS OF ENGINEERS

LEGEND

- △ MONUMENT
- ORIGINAL CORNER
- IRON PIN
- * COMPUTED DISTANCE

Eugene R. Janway
REGISTERED LAND SURVEYOR, L.S. No. 248

SHEET 1 of 2

2

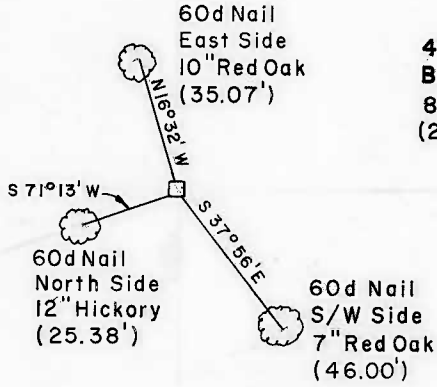
TENKILLER FERRY LAKE
ILLINOIS RIVER, OKLAHOMA

SECTION AND QUARTER SECTION CORNER
REFERENCES FOR

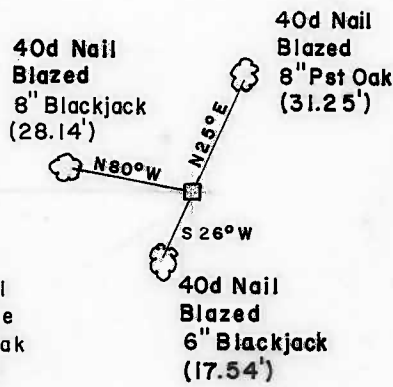
SEC.-20,T14N, R22 E CHEROKEE COUNTY

N.W. CORNER

BY OTHERS



NORTH 1/4 CORNER

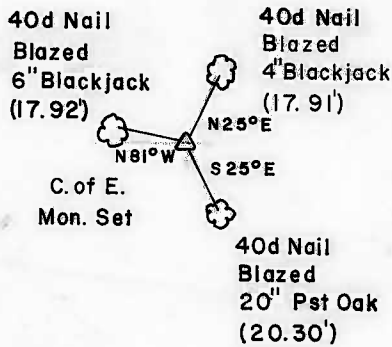


N.E. CORNER

IN LAKE



WEST 1/4 CORNER



EAST 1/4 CORNER

IN LAKE



S.W. CORNER

IN LAKE



SOUTH 1/4 CORNER

IN LAKE



S.E. CORNER

IN LAKE



BUTLER ASSOCIATES, INC.

Scale: 1" = 50'
Date: APR. & JUNE 1977
Field Book No. 4-305

LEGEND

- △ Monument
- Original Corner
- Iron Pin

REFERENCES

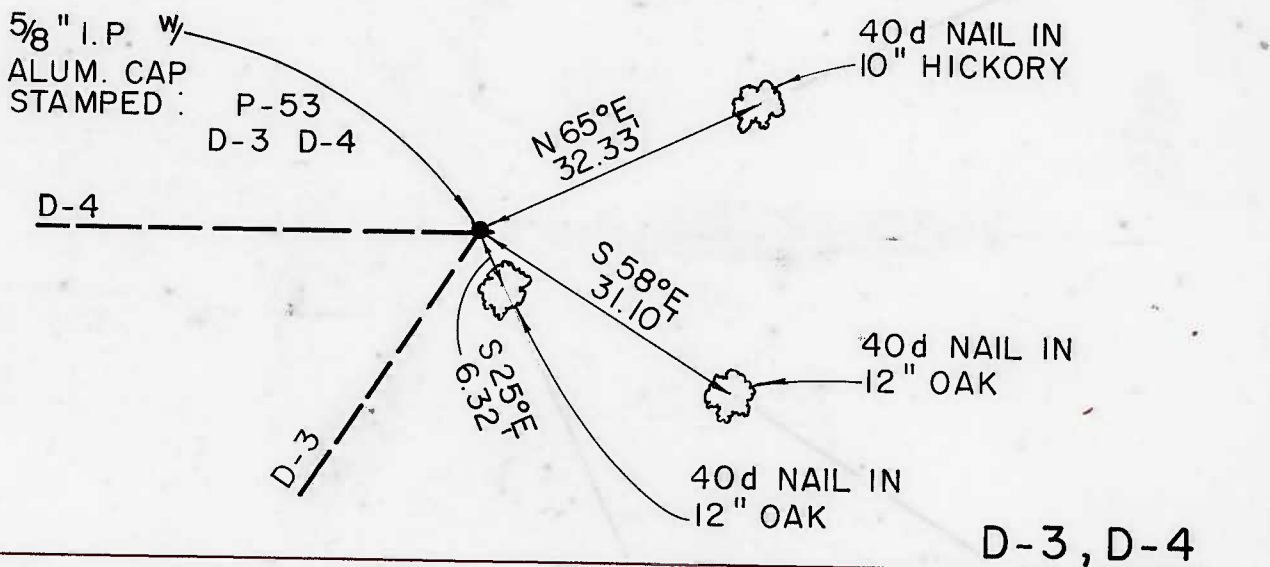
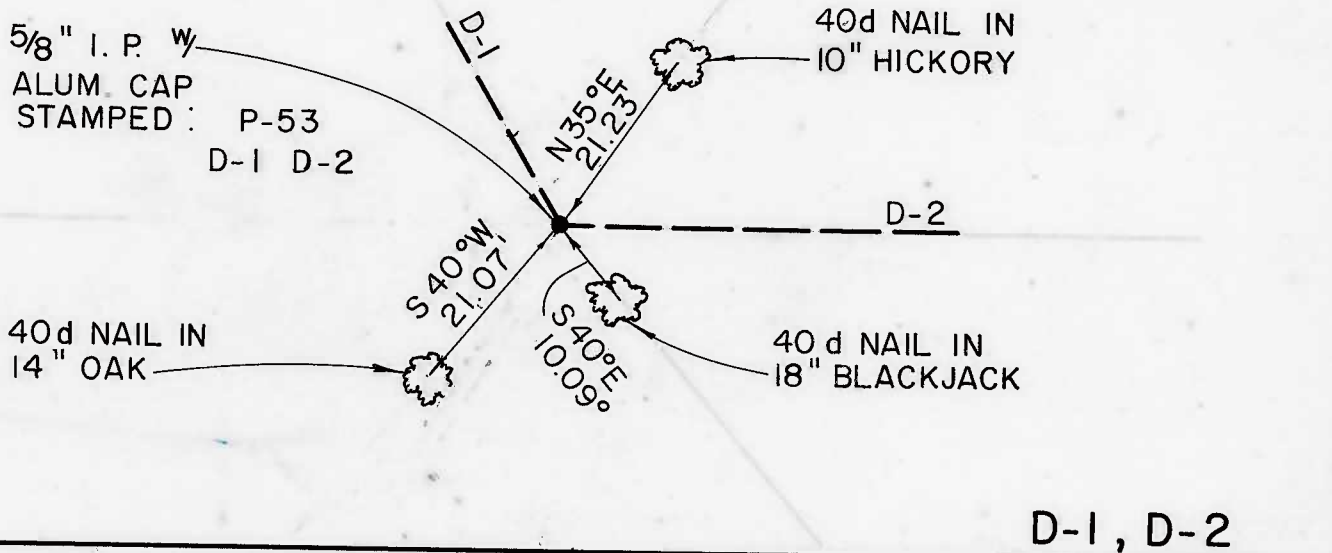
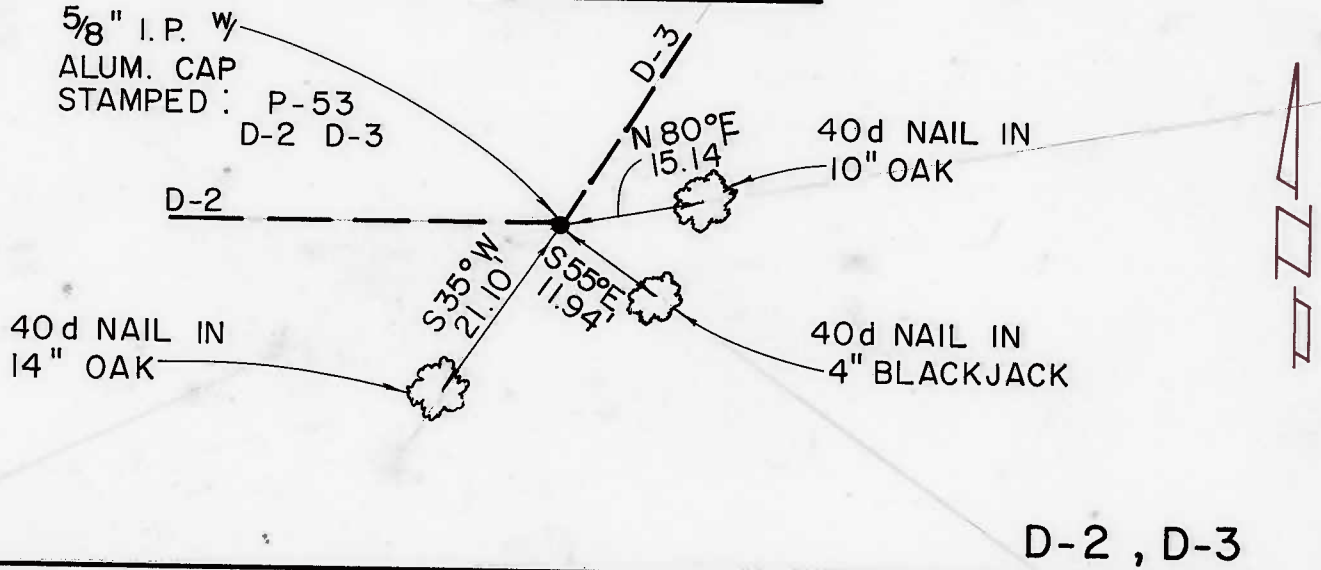
PARTIAL BOUNDARY SURVEYS
TENKILLER LAKE OKLA.
SEC. 20 T-14 -N R-22 -E

COUNTY CHEROKEE

D.O. NO. 0001

Performed Under Contract No. DACA 56-88-D-0047

PARCEL #53



Field Book No. 4-305 Date 11/88

CERTIFICATE OF SURVEY

I Hereby Certify That The Above Plat
is a True and Correct Representation
of the Survey

Basil E. Scott Jr.

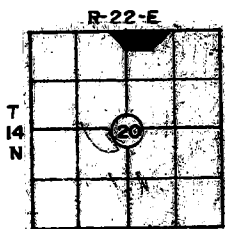
BASIL E. SCOTT JR. L.S. 545

SCOTT & ASSOCIATES, INC.
LAND SURVEYORS

U.S. ARMY CORPS OF ENGINEERS
TULSA DISTRICT

— LEGEND —

- △ MONUMENT
- ORIGINAL CORNER
- IRON PIN w/CAP



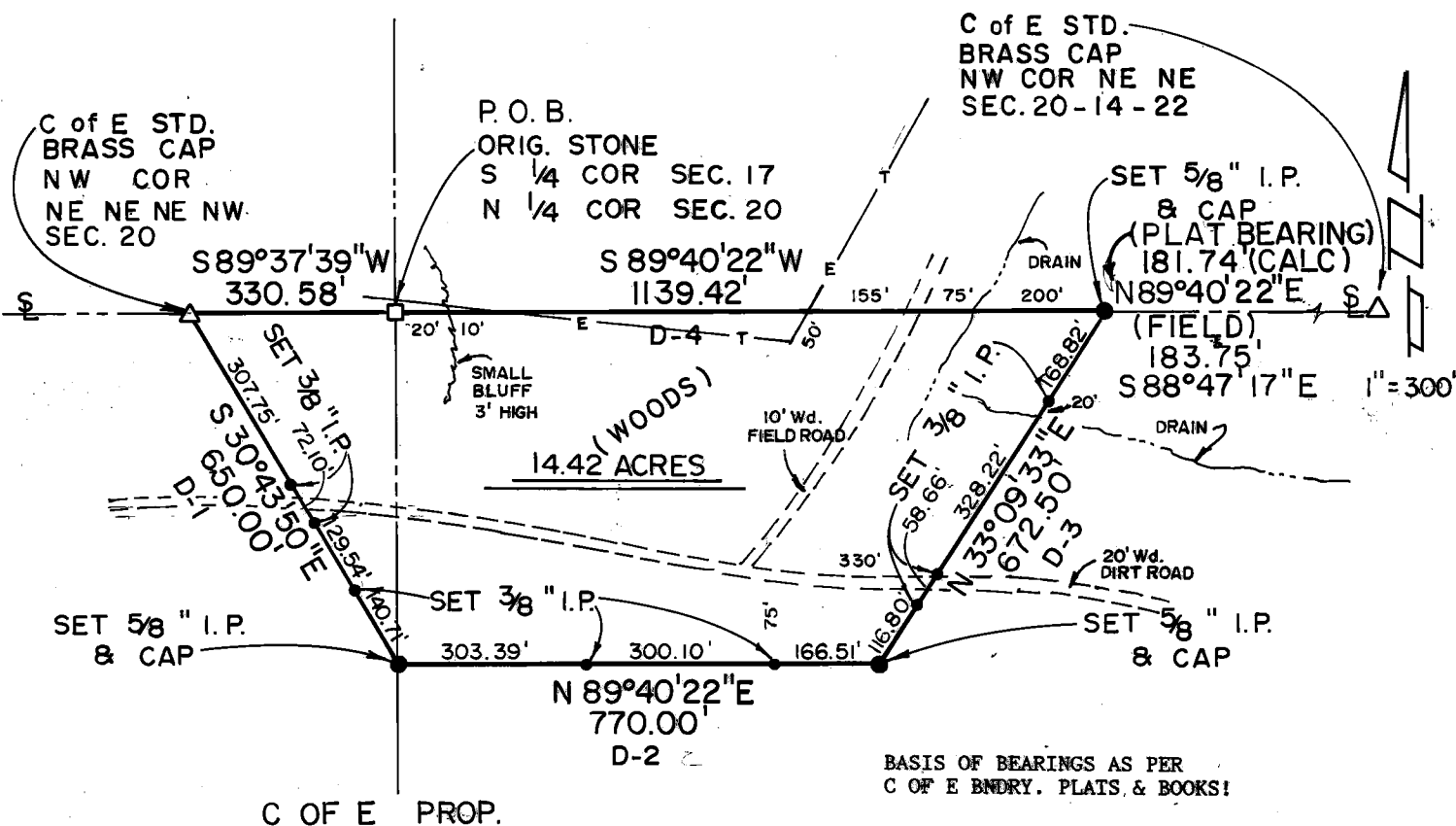
**PARTIAL BOUNDARY SURVEYS
TENKILLER LAKE OKLA.
SEC. 20 T-14 -N R-22-E**

PARCEL #53

COUNTY CHEROKEE

D.O. NO. 0001

Performed Under Contract No. DACA 56-88-D-0047



PARCEL #53 DESCRIPTION

Parcel #53 containing 14.42 Acres, "more or less", located in the NE $\frac{1}{4}$ NE $\frac{1}{4}$ NW $\frac{1}{4}$ and the NW $\frac{1}{4}$ NE $\frac{1}{4}$ of Section 20, Township 14 North, Range 22 E, Indian Meridian, Cherokee County, Oklahoma, described as: beginning at the N $\frac{1}{4}$ corner of said Section 20 an original stone; thence S89°37'39"W, 330.58 feet along the North Section line to the northwest corner of the NE $\frac{1}{4}$ NE $\frac{1}{4}$ NW $\frac{1}{4}$, being a std. C of E, brass cap; thence S30°43'50"E, 650.00 feet (D-1) to a 5/8" iron pin with aluminum cap; thence N89°40'22"E, 770.00 feet (D-2) to a 5/8" iron pin with aluminum cap; thence N33°09'33"E, 672.50 feet (D-3) to a 5/8" iron pin with aluminum cap on the north Section line; thence S89°40'22"W, 1139.42 feet (D-4) along the north Section line to the point of beginning.

Field Book No. 4-305 Date 11/88

CERTIFICATE OF SURVEY

I Hereby Certify That The Above Plat is a True and Correct Representation of the Survey.

**SCOTT & ASSOCIATES INC.
LAND SURVEYORS**

**U.S. ARMY CORPS OF ENGINEERS
TULSA DISTRICT**

— LEGEND —

- △ MONUMENT
- ORIGINAL CORNER
- IRON PIN W/ CAP

BASIL E. SCOTT L.S. 545