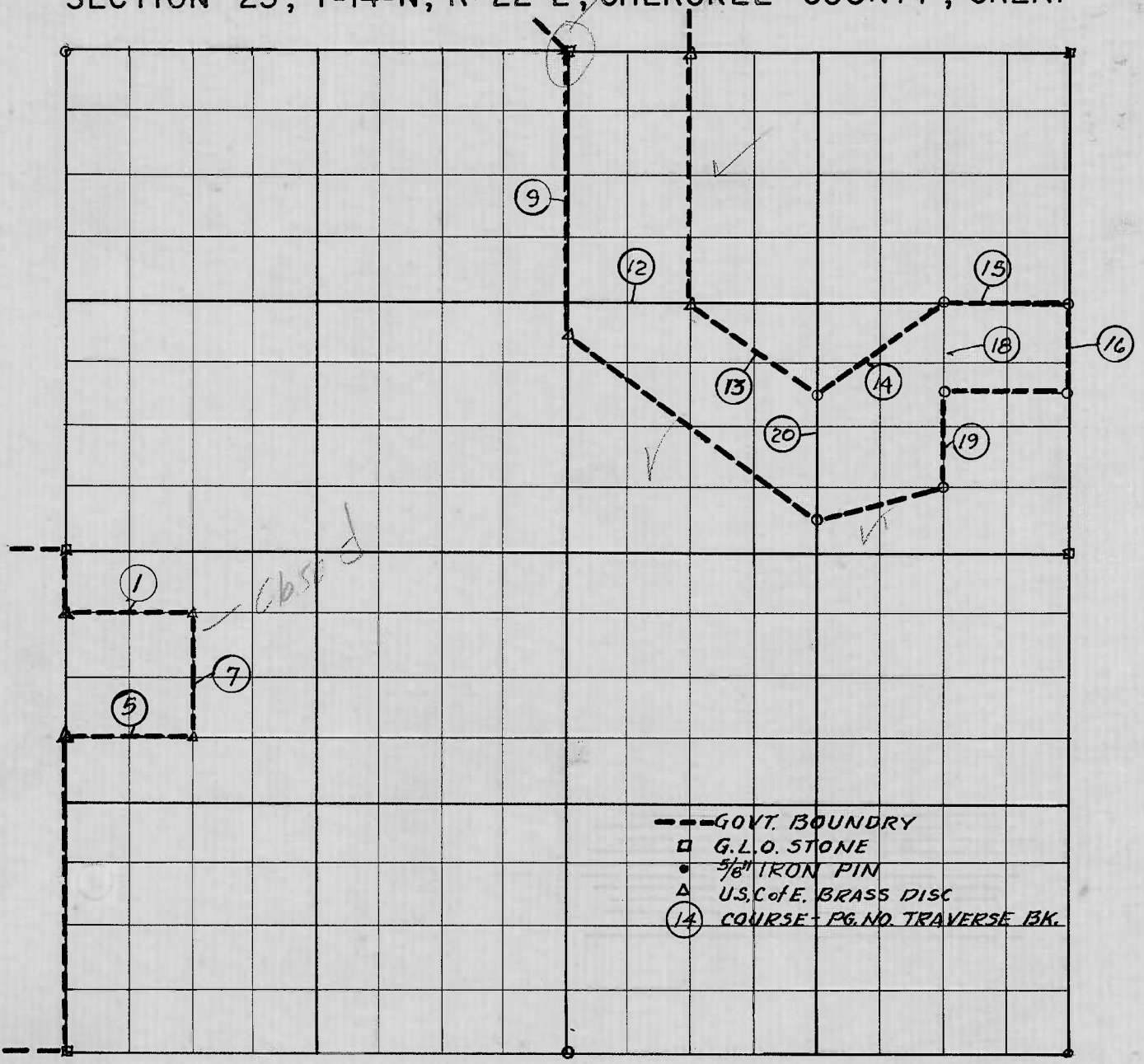


TENKILLER RESERVOIR

SECTION 23, T-14-N, R-22-E, CHEROKEE COUNTY, OKLA.



Book No. 4-246

Date August, 1963

Course No.	Distance	Bearing	Course No.	Distance	Bearing
5	660.45	S 89-52-33E	20	660.30	S 0-03-39E
7	659.31	N 0-01-26W	14	828.99	N 52-57-10E
1	660.37	N 89-52-42W	18	495.10	S 0-04-05E
9	1486.32	S 0-02-46E	19	495.10	S 0-04-05E
12	660.17	S 89-53-12E	15	660.17	S 89-53-12E
13	828.99	S 53-04-28E	16	495.0	S 0-04-32E

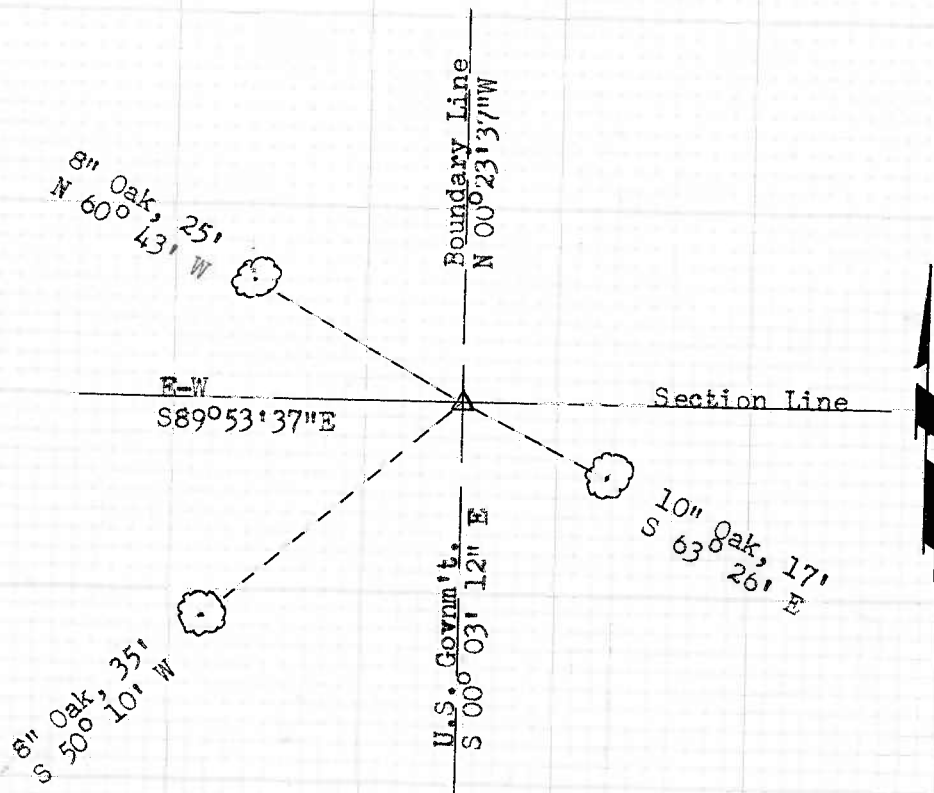
FILED _____ BOOK NO. _____ PAGE NO. _____

I certify that this plat is a true copy of the survey of the above Section.

Barton G. Treece
 Barton G. Treece, Civil Engineer
 507 Equity Building
 Muskogee, Oklahoma

Reset broken concrete marker
at NE cor. NW-NW-NE, Sec.23,
14N, 22E Cherokee, County

found the base of marker in
place, using the below described
information.



Marion F. Hicks
Marion F. Hicks
RLS # 527, Okla.

December 6, 1972